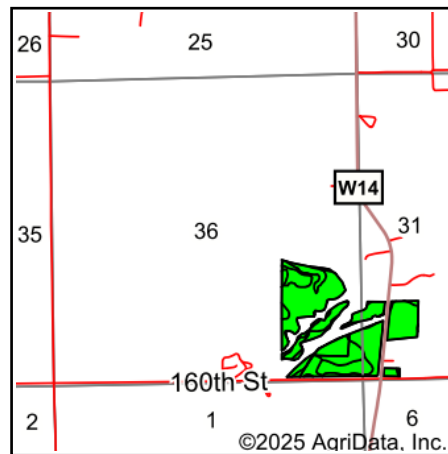
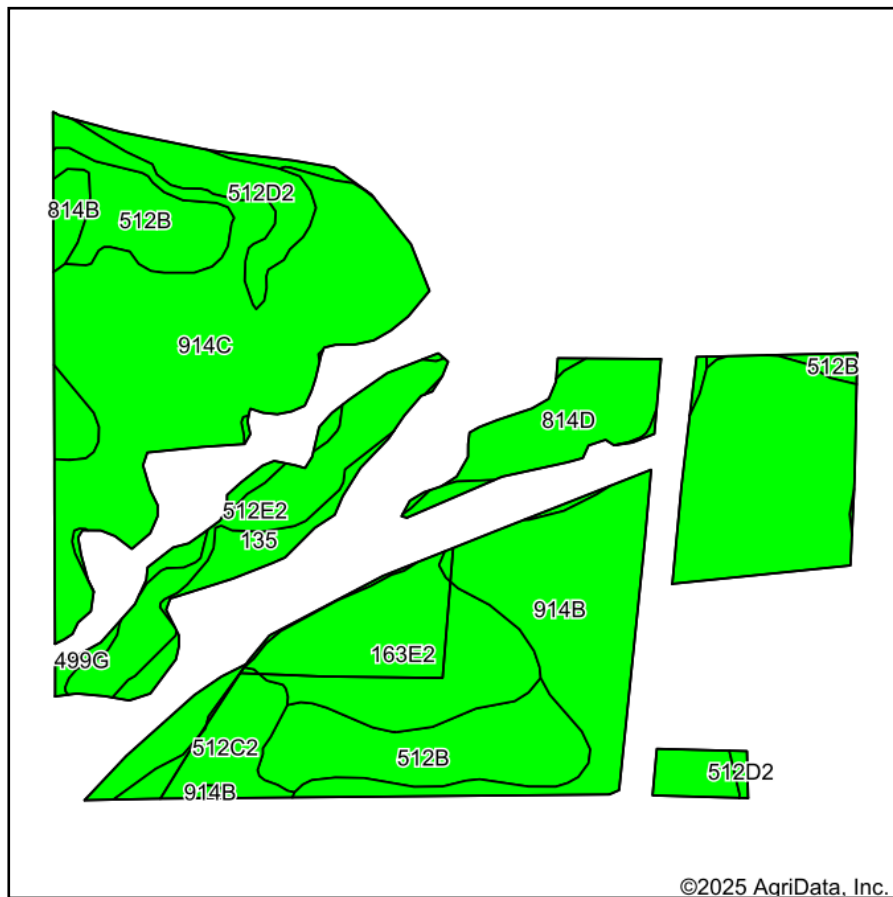


# Soils Map



State: **Iowa**  
 County: **Winneshiek**  
 Location: **36-97N-10W**  
 Township: **Sumner**  
 Acres: **58.37**  
 Date: **9/25/2025**



Maps Provided By:  
**surety**  
 CUSTOMIZED ONLINE MAPPING  
 © AgriData, Inc. 2023 www.AgriDataInc.com



Area Symbol: IA191, Soil Area Version: 33

Code	Soil Description	Acres	Percent of field	CSR2 Legend	Non-Irr Class *c	CSR2**	CSR	*n NCCPI Overall	*n NCCPI Corn	*n NCCPI Small Grains	*n NCCPI Soybeans
914B	Winneshiek loam, 2 to 5 percent slopes	14.92	25.6%		Ile	38	53	58	58	57	43
914C	Winneshiek loam, 5 to 9 percent slopes	14.60	25.0%		IIle	38	33	59	59	58	46
512B	Marlean loam, 2 to 5 percent slopes	7.15	12.2%		IIle	62	45	64	63	63	62
163E2	Fayette silt loam, 14 to 18 percent slopes, moderately eroded	6.12	10.5%		IVe	35	46	74	74	62	58
512E2	Marlean loam, 14 to 18 percent slopes, moderately eroded	3.51	6.0%		VIIe	16	5	53	53	51	47
814D	Rockton loam, 9 to 14 percent slopes	2.79	4.8%		IVe	23	13	64	62	63	50
499G	Nordness silt loam, 14 to 40 percent slopes	2.54	4.4%		VIIIs	5	5	20	20	19	12
512D2	Marlean loam, 9 to 14 percent slopes, moderately eroded	2.13	3.6%		Vle	33	5	57	57	56	52
512C2	Marlean loam, 5 to 9 percent slopes, moderately eroded	2.03	3.5%		IVe	52	20	61	60	60	55
135	Coland clay loam, 0 to 2 percent slopes, occasionally flooded	1.45	2.5%		IIw	65	78	87	87	51	66
814B	Rockton loam, 2 to 5 percent slopes	1.13	1.9%		Ile	52	57	67	65	66	52

Soils data provided by USDA and NRCS.

Code	Soil Description	Acres	Percent of field	CSR2 Legend	Non-Irr Class *c	CSR2**	CSR	*n NCCPI Overall	*n NCCPI Corn	*n NCCPI Small Grains	*n NCCPI Soybeans
Weighted Average					3.41	38.4	37.2	*n 60	*n 59.7	*n 56.9	*n 48.4

\*\*IA has updated the CSR values for each county to CSR2.

\*n: The aggregation method is "Weighted Average using all components"  
\*c: Using Capabilities Class Dominant Condition Aggregation Method