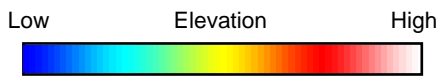
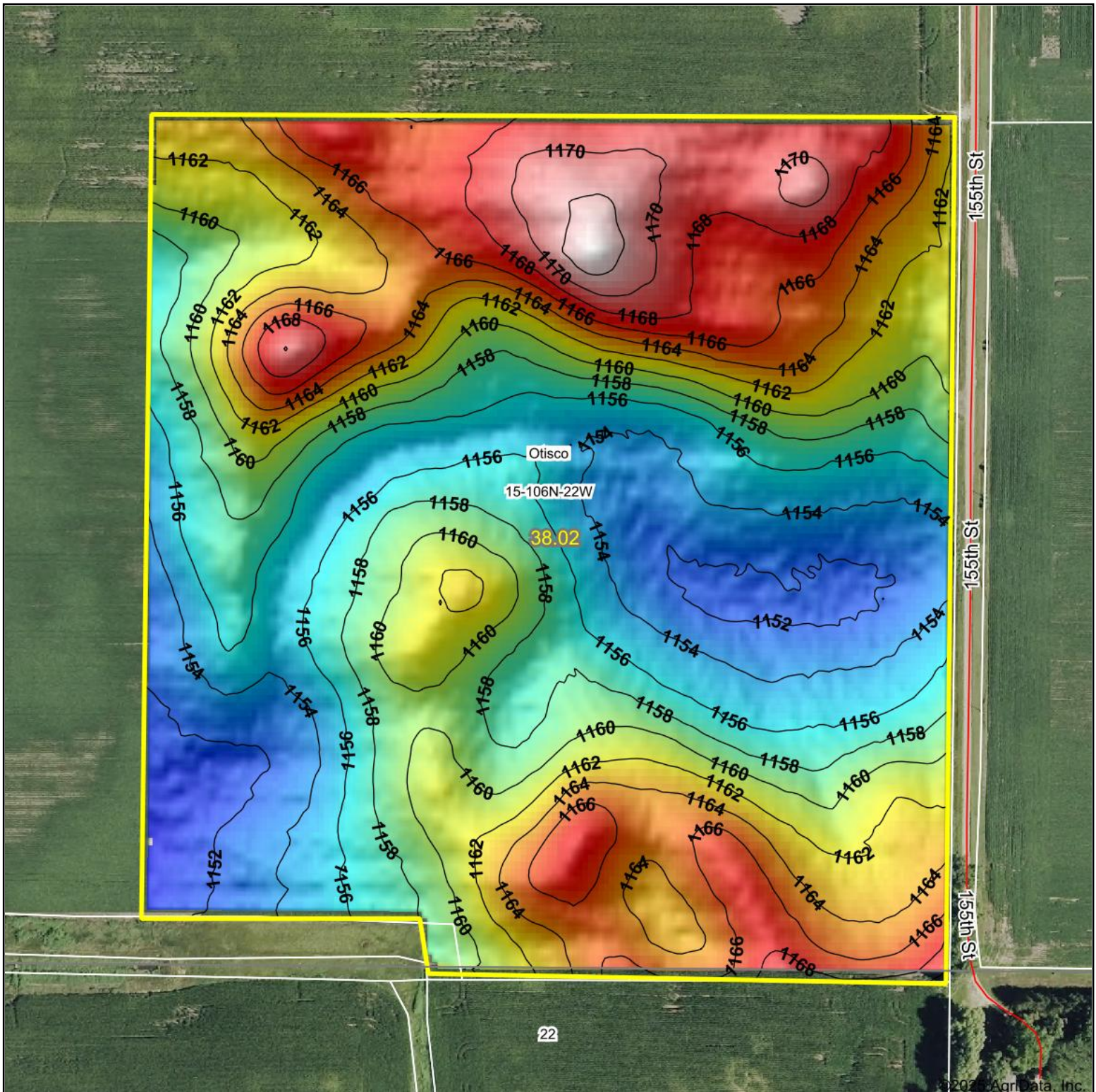


Topography Hillshade



Source: USGS 3 meter dem

Interval(ft): 2

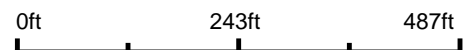
Min: 1,150.1

Max: 1,173.4

Range: 23.3

Average: 1,160.1

Standard Deviation: 5.38 ft



9/5/2025

15-106N-22W
Waseca County
Minnesota

Boundary Center: 43° 58' 49.57, -93° 27' 32.1

Maps Provided By:



© AgriData, Inc. 2023

www.AgriDataInc.com

Field borders provided by Farm Service Agency as of 5/21/2008.