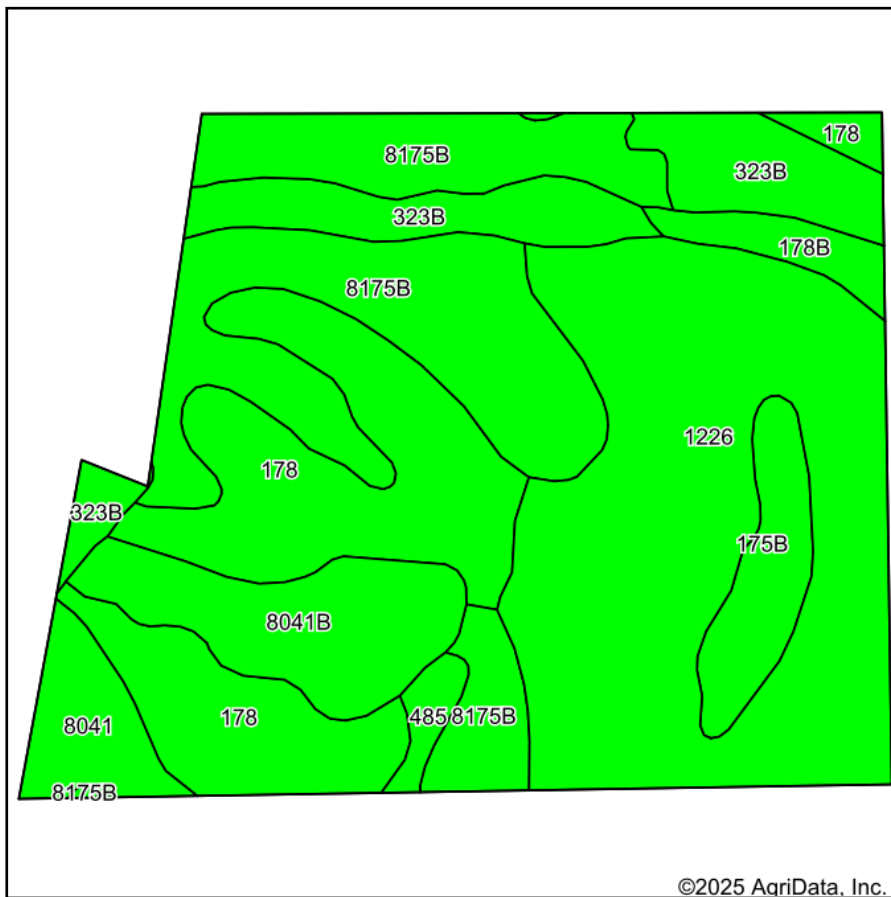
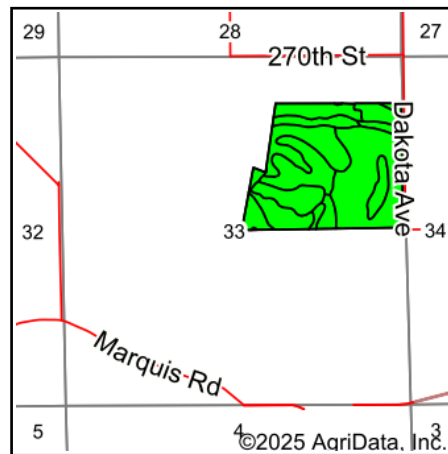


Soils Map



Soils data provided by USDA and NRCS.



State: **Iowa**
 County: **Bremer**
 Location: **33-91N-14W**
 Township: **Jackson**
 Acres: **95**
 Date: **7/28/2025**



Maps Provided By:
surety
 CUSTOMIZED ONLINE MAPPING
 © AgriData, Inc. 2023 www.AgriDataInc.com



Area Symbol: IA017, Soil Area Version: 29

Code	Soil Description	Acres	Percent of field	CSR2 Legend	Non-Irr Class *c	Irr Class *c	CSR2**	CSR	*n NCCPI Overall	*n NCCPI Corn	*n NCCPI Small Grains	*n NCCPI Soybeans	*n NCCPI Cotton
1226	Lawler loam, 0 to 2 percent slopes, rarely flooded	29.72	31.2%		Ils		59	72	83	83	70	60	1
8175B	Dickinson fine sandy loam, terrace, 1 to 4 percent slopes, rarely flooded	21.07	22.2%		Ille		52	55	62	62	54	37	8
178	Waukee loam, 0 to 2 percent slopes, rarely flooded	18.58	19.6%		Ils		69	79	84	84	70	71	9
323B	Fort Dodge loam, 2 to 5 percent slopes	8.90	9.4%		Ile		79	72	95	95	77	81	
8041B	Sparta loamy sand, terrace, 2 to 5 percent slopes, rarely flooded	6.99	7.4%		IVs	Ile	43	40	61	61	52	37	9
175B	Dickinson fine sandy loam, 2 to 5 percent slopes	3.71	3.9%		Ille		50	55	61	61	53	36	
8041	Sparta loamy sand, terrace, 0 to 2 percent slopes, rarely flooded	3.23	3.4%		IVs	Ile	48	45	61	61	52	37	9
178B	Waukee loam, 2 to 5 percent slopes, rarely flooded	1.85	1.9%		Ils		64	74	82	82	70	69	9

Soils data provided by USDA and NRCS.

Code	Soil Description	Acres	Percent of field	CSR2 Legend	Non-Irr Class *c	Irr Class *c	CSR2**	CSR	*n NCCPI Overall	*n NCCPI Corn	*n NCCPI Small Grains	*n NCCPI Soybeans	*n NCCPI Cotton
485	Spillville loam, 0 to 2 percent slopes, occasionally flooded	0.95	1.0%		IIw		76	92	87	87	59	74	
Weighted Average					2.48	*-	59.6	65.9	*n 76.5	*n 76.5	*n 64.4	*n 55.9	*n 5

**IA has updated the CSR values for each county to CSR2.

*n: The aggregation method is "Weighted Average using all components"
*c: Using Capabilities Class Dominant Condition Aggregation Method
*- Irr Class weighted average cannot be calculated on the current soils data due to missing data.