

## Field #5

Fayette County, Iowa



**136.68**

Production acres



**2**

Parcels



**227.32**

Gross acres



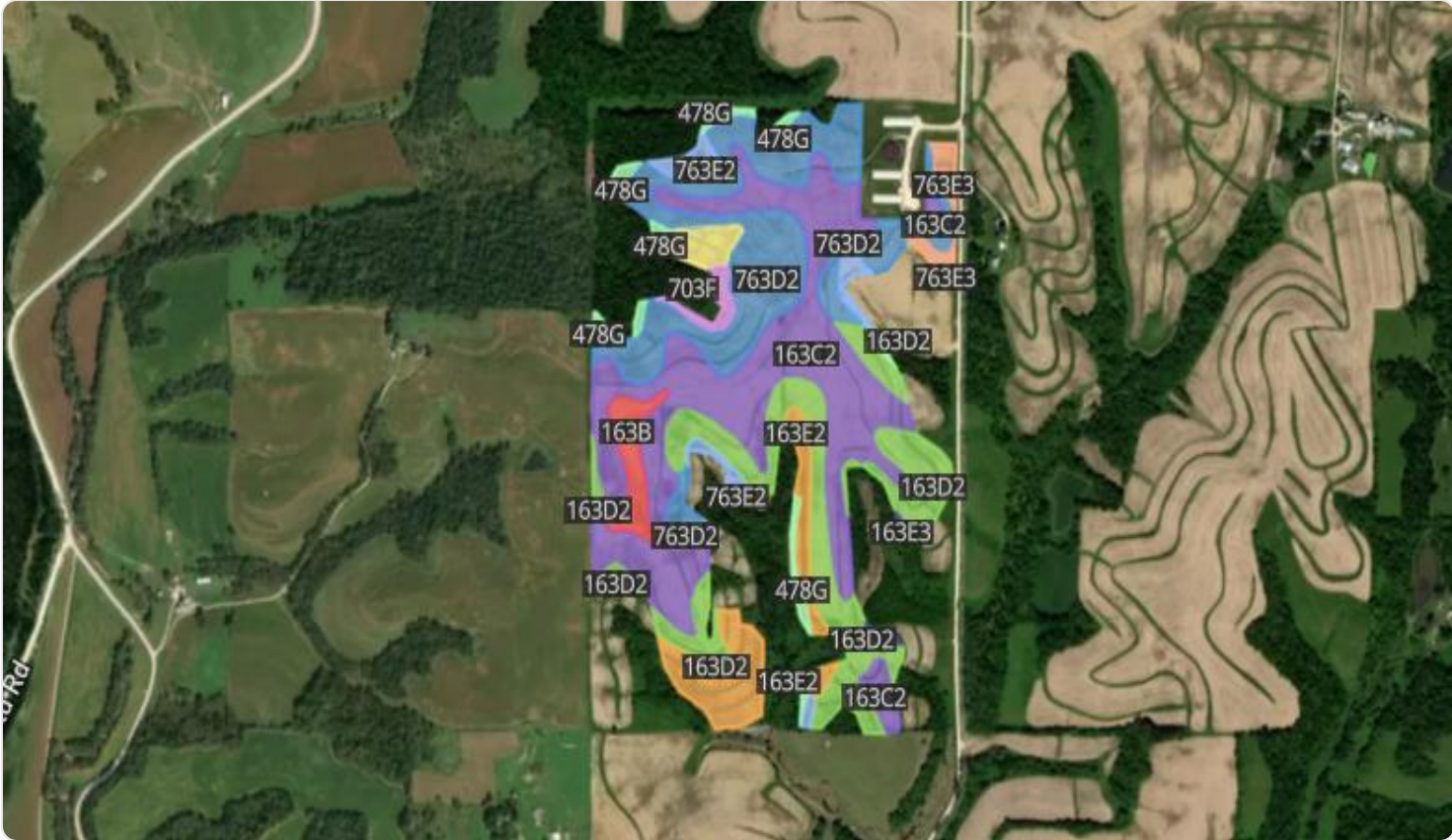
**57.6**

Soil rating



Using the camera on your mobile device, scan the above QR code to view this web page. Or [click here](#).

## Soil Map



Acreage types displayed on map: Dryland, CRP, Irrigated

Soil Code	Soil Description	% of Map	Acres	CSR2
163C2	Fayette silt loam, 5 to 9 percent slopes, moderately eroded	36.31%	49.63	72
763D2	Exette silt loam, 9 to 14 percent slopes, moderately eroded	24.69%	33.74	58
163D2	Fayette silt loam, 9 to 14 percent slopes, moderately eroded	18.58%	25.39	46
163E2	Fayette silt loam, 14 to 18 percent slopes, moderately eroded	8.01%	10.95	35
163B	Fayette silt loam, 2 to 6 percent slopes	2.96%	4.04	83
763E2	Exette silt loam, 14 to 18 percent slopes, moderately eroded	2.66%	3.63	46
478G	Rock outcrop-Nordness complex, 25 to 60 percent slopes	2.10%	2.87	5
163E	Fayette silt loam, 14 to 18 percent slopes	1.84%	2.52	38
763E3	Exette silt loam, 14 to 18 percent slopes, severely eroded	1.54%	2.10	40
2 other soils		1.33%	1.81	29
Total			136.68	57.6






All data courtesy SSURGO database distributed by the U.S. NRCS.



### Soil Capability Classes Non-Irrigated



Acreage types displayed on map: Dryland, CRP, Irrigated

Capability Class	% of Map	Acres
 3e	79.58%	108.76
 4e	12.51%	17.10
 2e	2.96%	4.04
 N/A	2.10%	2.87
 6e	2.87%	3.91
<b>Total</b>		<b>136.68</b>

All data courtesy SSURGO database distributed by the U.S. NRCS.