

**Goose Alley 40 For Sale in Stafford
County, Kansas
Stafford, KS 67578**

\$85,000
40 +/- acres
Stafford County



Goose Alley 40 For Sale in Stafford County, Kansas Stafford, KS / Stafford County

SUMMARY

City, State Zip

Stafford, KS 67578

County

Stafford County

Type

Farms

Latitude / Longitude

38.038763 / -98.510123

Acreage

40

Price

\$85,000

Property Website

<https://redcedarland.com/detail/goose-alley-40-for-sale-in-stafford-county-kansas-stafford-kansas/7492>



Aerial Map



Goose Alley 40 For Sale in Stafford County, Kansas Stafford, KS / Stafford County

PROPERTY DESCRIPTION

PRICED REDUCED!

40+/- Acres of Dryland Tillable Acres Located North East Of Stafford Kansas.

Legals: E/2 of the E/2 of the NE/4 of S22-T23-R11w

Driving Directions: From Stafford Kansas (HWY-50 / Main St.) head north on Main Street 5 miles to NE 50th St. Turn east on NE 50th St. and go 5 miles to NE 130th Ave. Turn back north on 130th and go 1/2 mile. The property is on the west side of the road.

Property Description: This tract is a great opportunity for a buyer to purchase an income producing farm with great field hunting for waterfowl. Located only 2 short miles from Quivira National Wildlife Refuge this farm lays perfectly to intercept the vast amounts of ducks and geese that leave the refuge to feed. Quivira also has great public hunting areas to access during waterfowl season. Aside from the hunting capabilities this farm is all tillable acres with a Farnum Loam soil type. This region of the county is known for higher yielding crop land and better soil types. The farm is on a cash rent basis with this years rent remaining with the Seller. Smaller income producing properties rarely come up on the market! For more information or a showing contact Ryan at 620-546-3746.

2019 Taxes: 756.04

Mineral Rights Are Negotiable

Key Features:

2 Miles from Quivira National Wildlife Refuge

Great Tillable

Good Soils

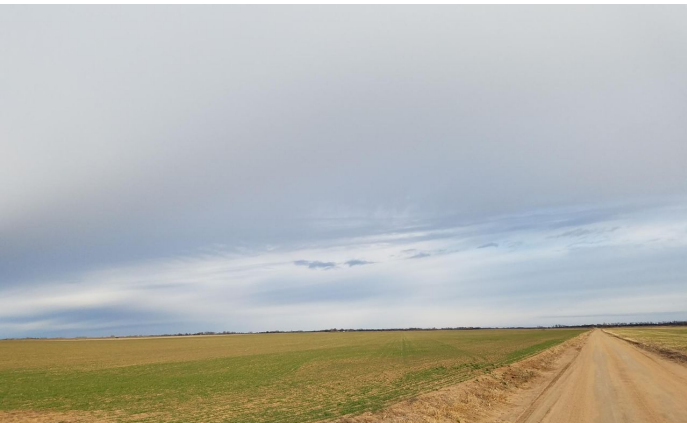
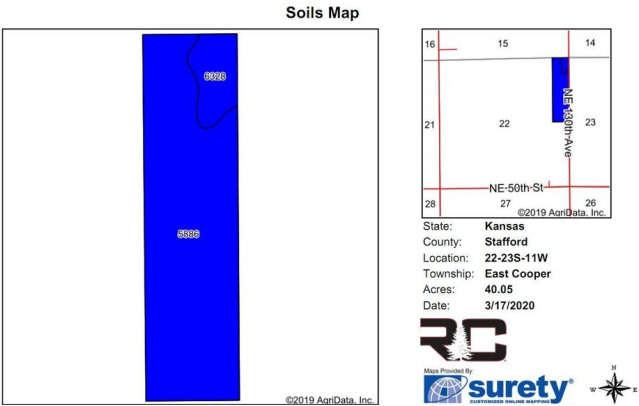
Excellent Field Hunting for Waterfowl

1 Mile from 4th Street Blacktop

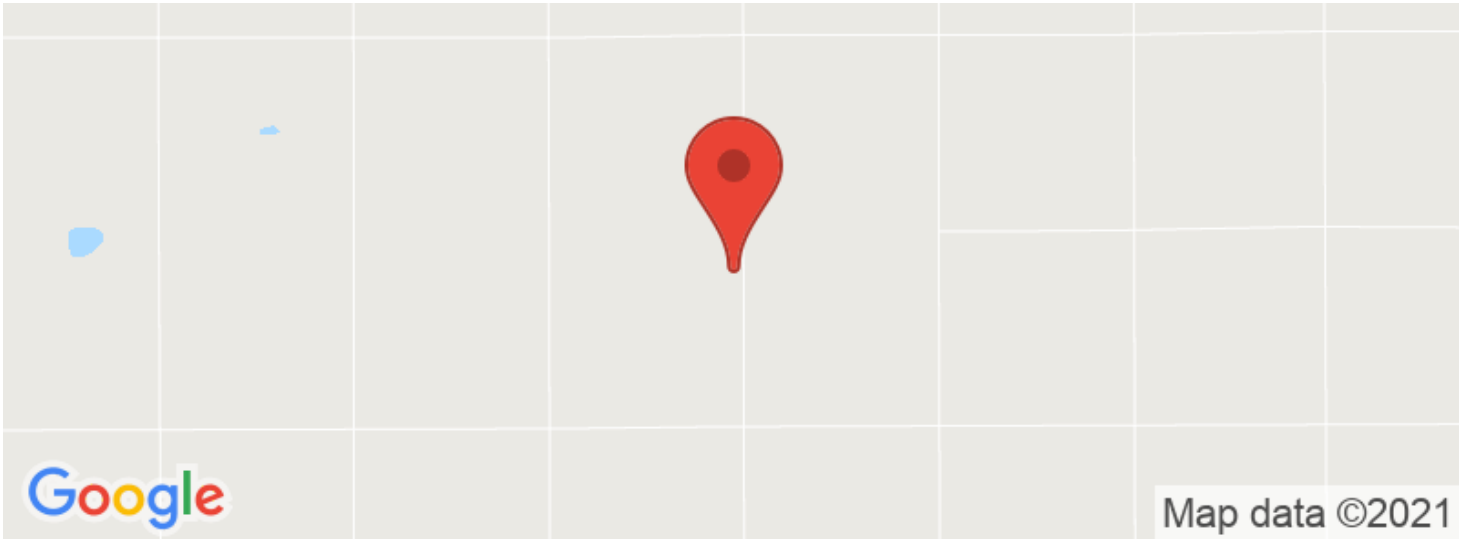




Goose Alley 40 For Sale in Stafford County, Kansas
Stafford, KS / Stafford County



Locator Maps



Aerial Maps



Goose Alley 40 For Sale in Stafford County, Kansas
Stafford, KS / Stafford County

LISTING REPRESENTATIVE

For more information contact:



Representative

Ryan Koelsch

Mobile

(620) 546-3746

Office

(620) 546-3746

Email

ryan@redcedarland.com

Address

2 NE 10 ave

City / State / Zip

St john, KS, 67576

NOTES



[illegible]

DISCLAIMERS

Information in this brochure is provided solely for information purposes and does not constitute an offer to sell or advertise real estate outside the states in which broker or agent licensed. The information presented has been obtained from sources deemed to be reliable, but is not guaranteed or warranted by the agent, broker, or the sellers of these properties. This offering is subject to errors, omissions, prior sale, price change, correction or withdrawal from the market without notice. All references to age, square footage, income, expenses, acreage, carrying capacity, and land classification, etc. are approximate. Prospective buyers are chargeable with and expected to conduct their own independent investigation of the information and the property and to rely only on those results. Sellers reserve the right to accept or reject any and all offers without liability to any buyer or cooperating broker.

Maps are provided for illustration purposes only, the accuracy is not warranted. Parcels on interactive maps are not adjusted to match aerial backgrounds. This information is for reference purposes only and is not a legal document. Data maps contain errors. The seller and seller's agent are making known to all potential buyers that there may be variations between the location of the existing fence lines and the legal description of the deeded property. Seller and seller's agent make no warranties with regard to the location of the fence lines in relationship to the deeded property lines, nor does the Seller make any warranties or representations with regard to the specific acreage contained within the fenced property lines. Seller is selling the property in an "as is" condition, which includes the location of the fences as they exist. Boundaries shown on the accompanying maps are approximate, based on county parcel data. The maps are not to scale. The accuracy of the maps is not guaranteed. Prospective buyers are encouraged to verify fence lines, deeded property lines and acreages using a licensed surveyor at their own expense.



Red Cedar Land Co.
2 NE 10th ave
St john, KS 67576
(620) 546-3746
www.redcedarland.com

