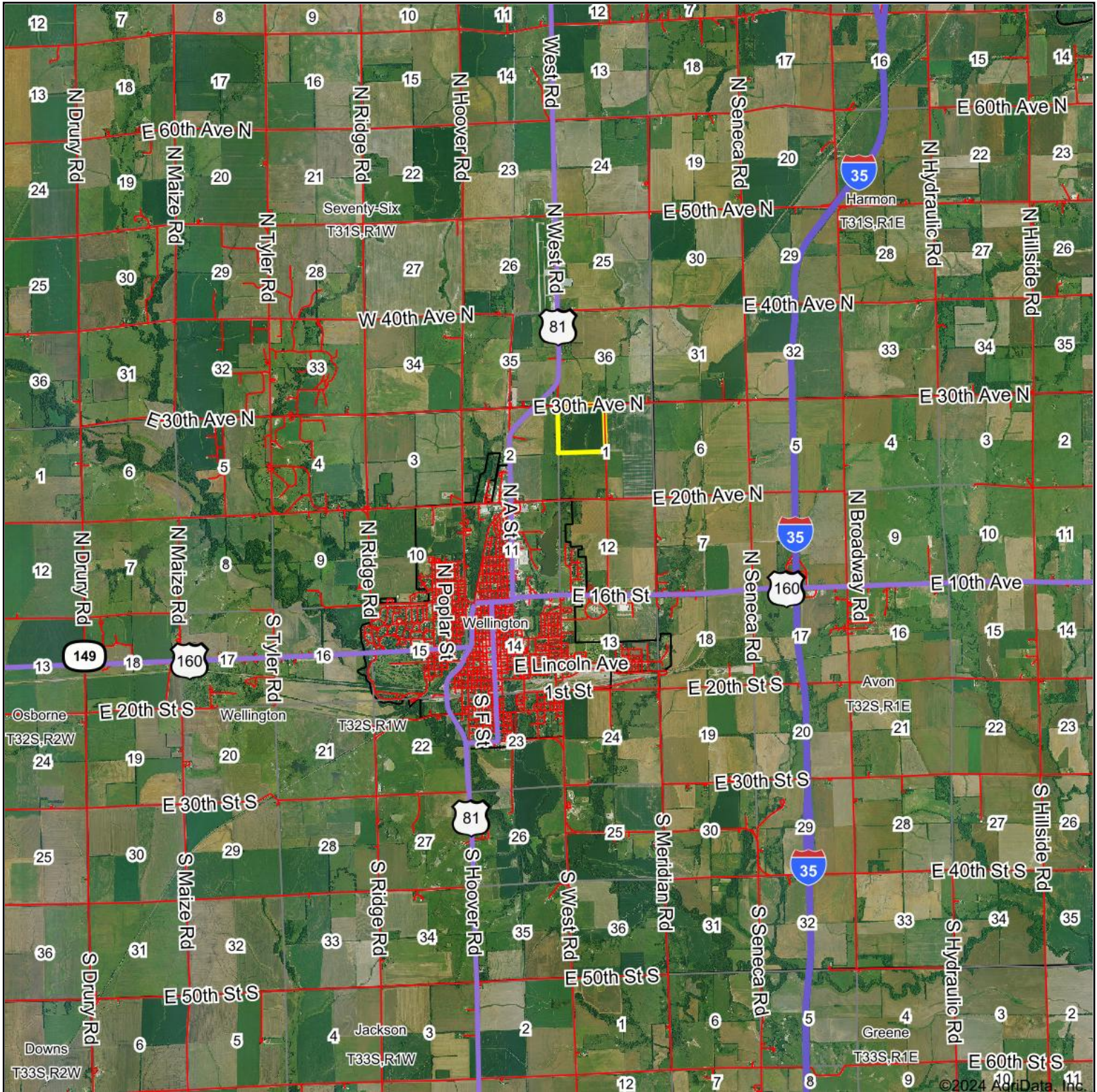


Aerial Map



Boundary Center: 37° 18' 2.18, -97° 22' 50.07

0ft 8614ft 17229ft



1-32S-1W
Sumner County
Kansas



Maps Provided By:
surety
CUSTOMIZED ONLINE MAPPING
© AgriData, Inc. 2023 www.AgridataInc.com

3/8/2024