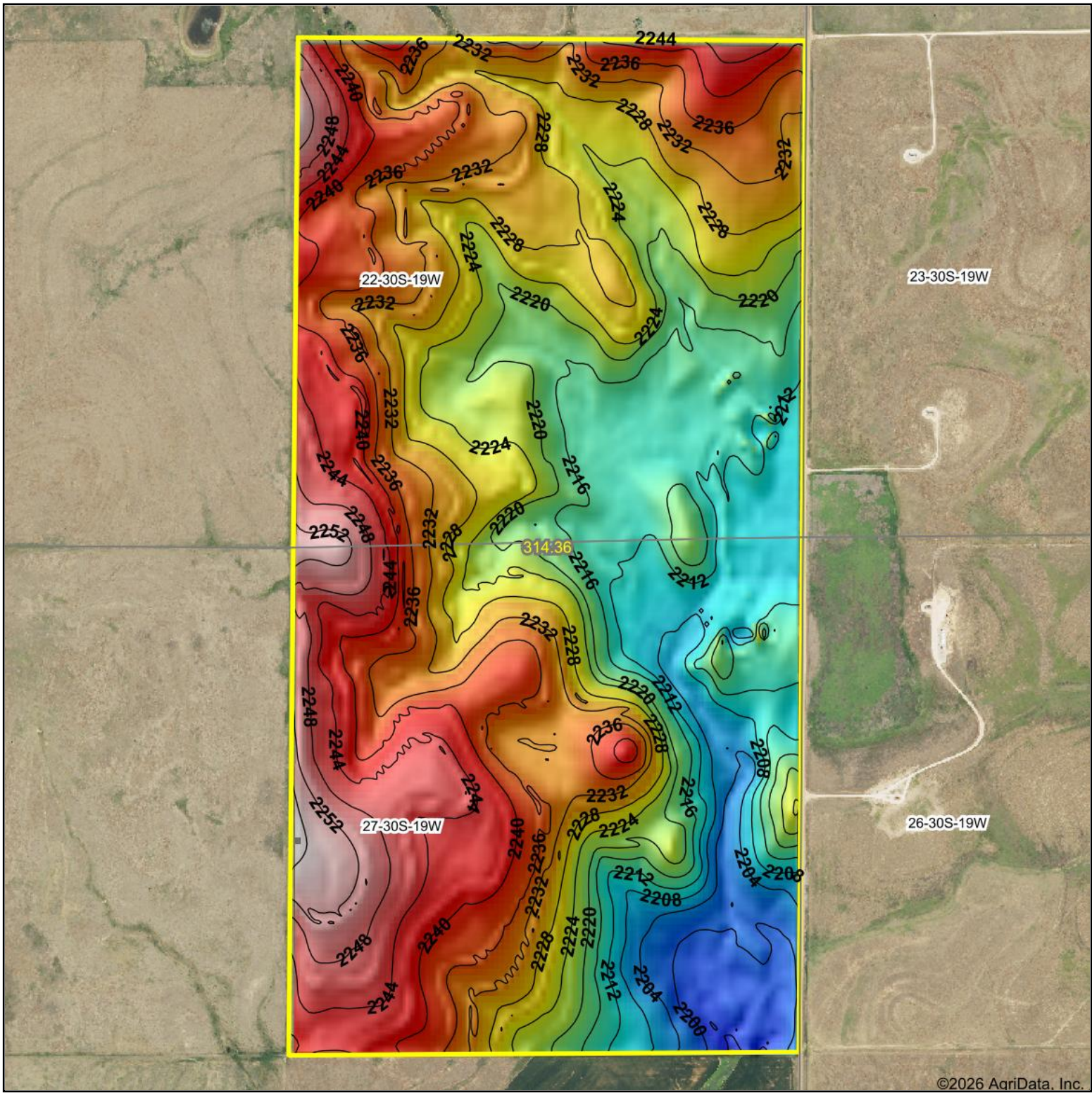
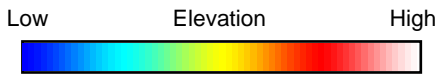


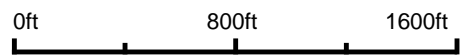
Topography Hillshade



©2026 AgriData, Inc.



Source: USGS 10 meter dem
 Interval(ft): 4
 Min: 2,195.9
 Max: 2,260.3
 Range: 64.4
 Average: 2,229.5
 Standard Deviation: 13.58 ft



27-30S-19W
Kiowa County
Kansas

Boundary Center: 37° 24' 39.01, -99° 22' 43.39



Maps Provided By:



© AgriData, Inc. 2025 www.AgriDataInc.com