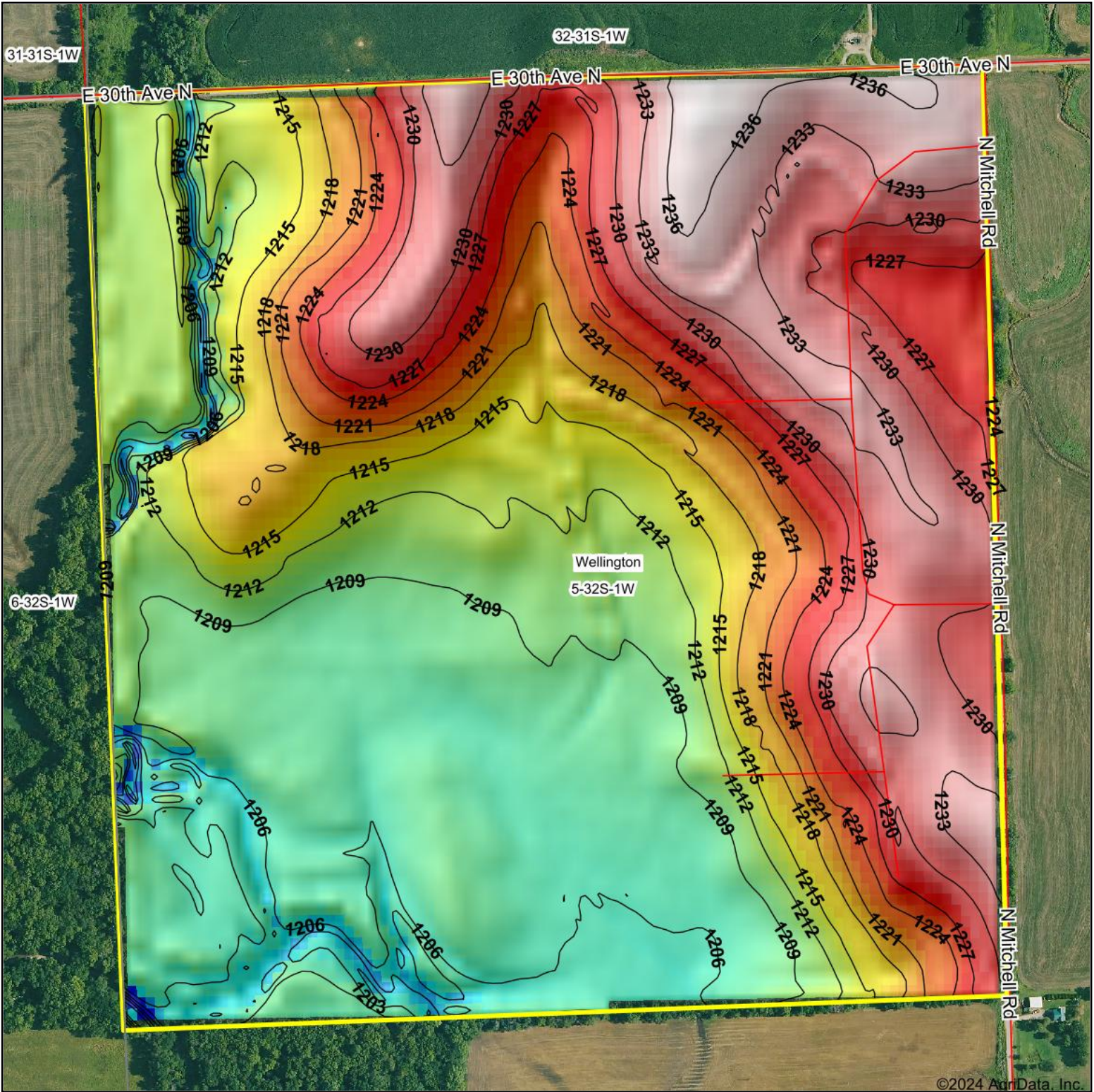


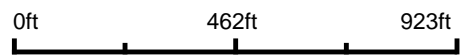
Topography Hillshade



©2024 AgriData, Inc.



Source: USGS 10 meter dem
 Interval(ft): 3
 Min: 1,191.9
 Max: 1,237.3
 Range: 45.4
 Average: 1,217.5
 Standard Deviation: 10.3 ft



5-32S-1W
Sumner County
Kansas

Boundary Center: 37° 17' 57.06, -97° 27' 11.94



Maps Provided By:



© AgriData, Inc. 2023

www.AgriDataInc.com