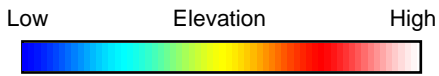
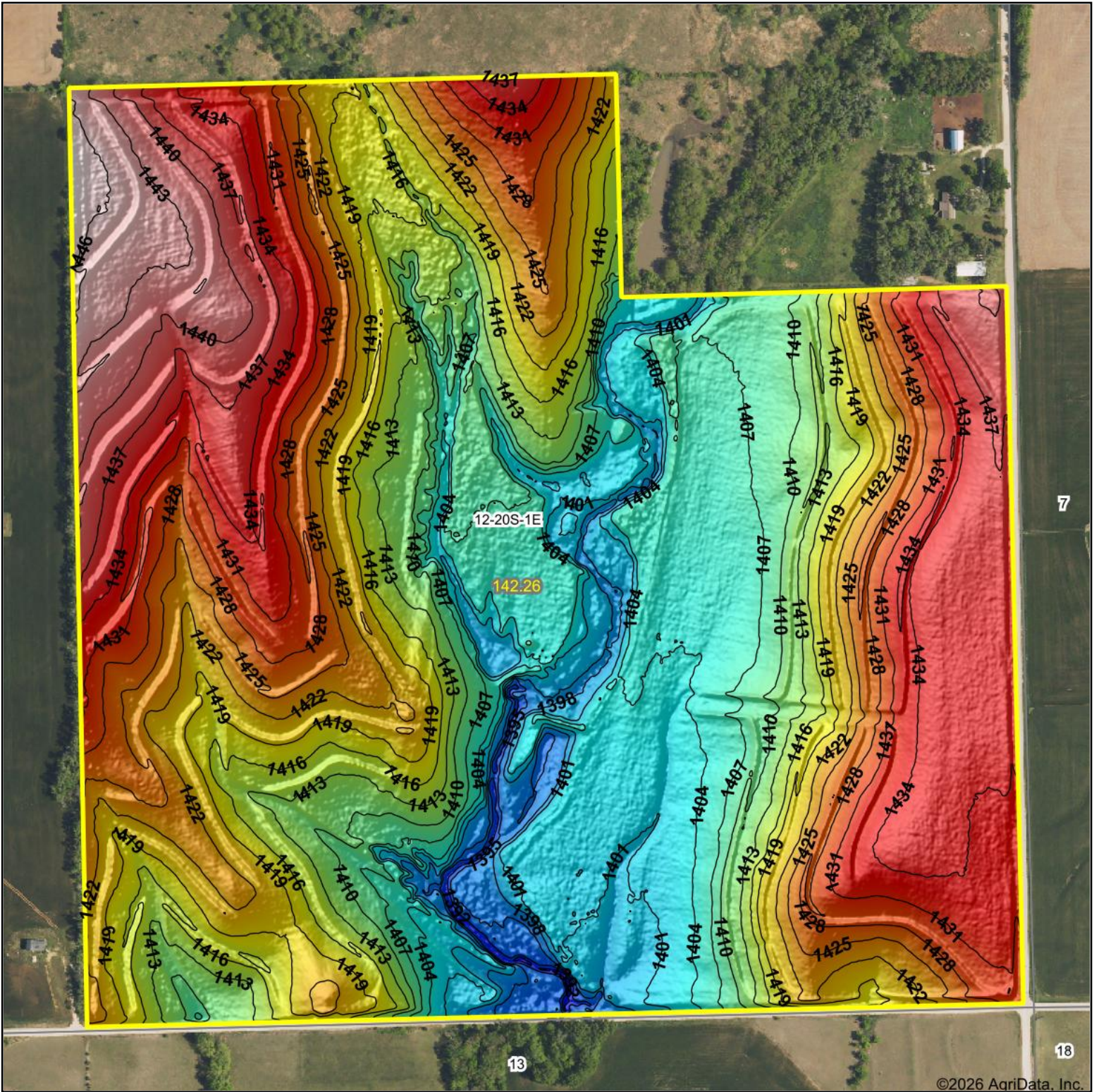


Topography Hillshade

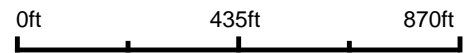


Maps Provided By:



© AgriData, Inc. 2025 www.AgriDataInc.com

Source: USGS 1 meter dem
 Interval(ft): 3
 Min: 1,387.8
 Max: 1,448.3
 Range: 60.5
 Average: 1,419.1
 Standard Deviation: 12.96 ft



2/21/2026

12-20S-1E
Marion County
Kansas

Boundary Center: 38° 19' 20.94, -97° 15' 56.93