

Dardanelle 14
12088 N. State Highway 28
Dardanelle, AR 72834

\$550,000
14.710± Acres
Yell County



Dardanelle 14
Dardanelle, AR / Yell County

SUMMARY

Address

12088 N. State Highway 28

City, State Zip

Dardanelle, AR 72834

County

Yell County

Type

Residential Property, Ranches, Horse Property

Latitude / Longitude

35.138766 / -93.23123

Dwelling Square Feet

3000

Bedrooms / Bathrooms

3 / 4

Acreage

14.710

Price

\$550,000

Property Website

<https://www.mossoakproperties.com/property/dardanelle-14-yell-arkansas/98927/>



PROPERTY DESCRIPTION

The Ultimate Lifestyle Estate: Luxury Living, Massive Shop, & Endless Potential Dardanelle, AR | Highway 28 Frontage

Experience the perfect intersection of modern luxury and unrestricted freedom. This 3,000 sq. ft. estate is more than just a home; it is a turnkey compound designed for those who work hard, play hard, and value the peace of the Arkansas countryside without sacrificing high-end amenities.

The Residence: Designed for Space & Style

Whether you're hosting the extended family or looking for a floor plan that offers maximum privacy, this home delivers:

- **Dual Master Suites:** Featuring two massive master bedrooms, each with oversized walk-in closets and private ensuite bathrooms- perfect for multi-generational living or a high-end guest wing.
- **Gourmet Entertaining:** A chef's kitchen anchored by a large stovetop island flows into two distinct living areas, each featuring a cozy gas fireplace.
- **Modern Tech:** Move-in ready with **Starlink Internet** and a comprehensive security system already in place.
- **Outdoor Living:** A sprawling back deck offers the perfect front-row seat to world-class Arkansas sunsets.

The Shop: The Ultimate Workspace

Forget a standard garage; this is a professional-grade facility:

- **Fully Insulated:** Climate-controlled comfort for year-round projects.
- **Industrial Strength:** Reinforced concrete floors designed to handle heavy equipment, a car collection, or a boat.
- **Easy Access:** Two oversized garage doors make moving trailers or machinery a breeze.

The Outbuilding: A Multi-Use Powerhouse

While currently outfitted as a premier 7-stall equestrian barn, this insulated metal building is a blank canvas for:

- **Climate-Controlled Storage:** Perfect for an RV (with hookups and septic dump already installed).
- **Home Business Headquarters:** Includes a dedicated office, full bathroom, and secure storage rooms.
- **The Ultimate "Man Cave" or Studio:** The insulated walls and high ceilings are ideal for an art studio, gym, or indoor recreation space.

The Grounds & Location

- **Curb Appeal:** Striking metal fencing and professional landscaping create an immediate impression of prestige.
 - **Accessibility:** Prime Highway 28 frontage provides excellent visibility for a home-based business or easy commuting.
 - **Security:** A dedicated fenced area keeps pets safe and contained within the sprawling acreage.
-

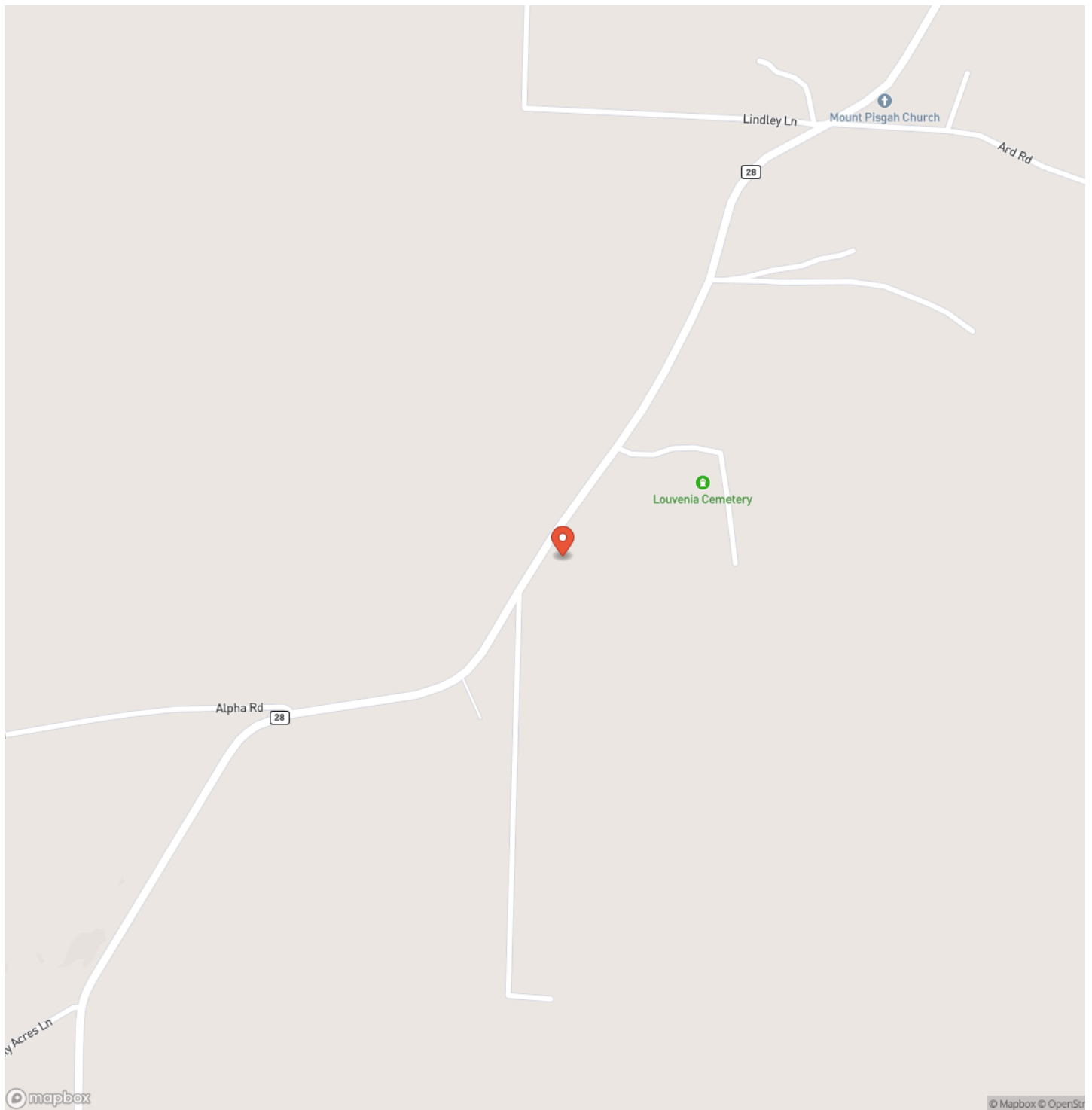
Whether you envision a private hobby farm, a home-based business hub, or a luxury retreat with room for all your toys, this Dardanelle estate is ready for its next chapter.



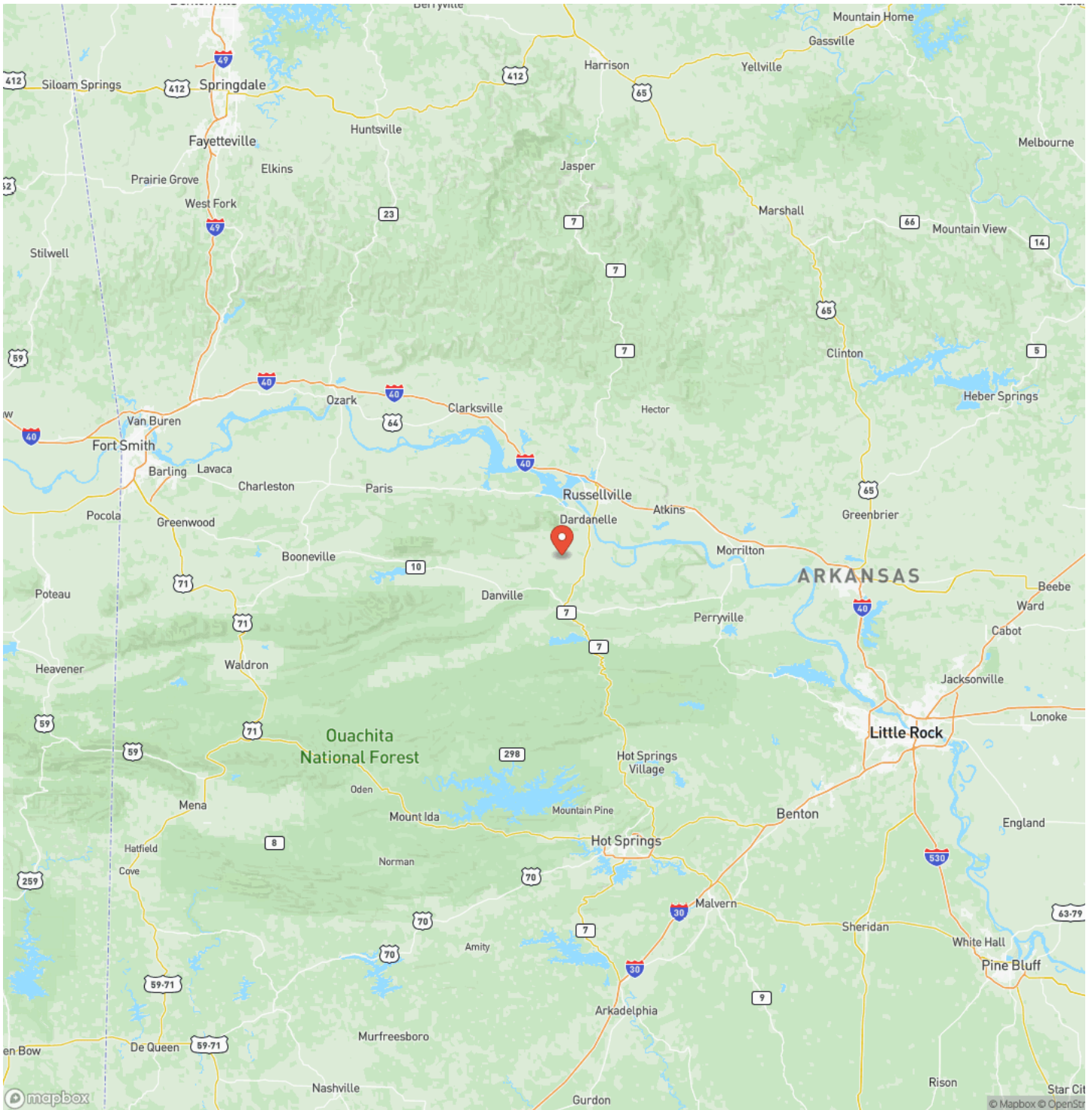
Dardanelle 14
Dardanelle, AR / Yell County



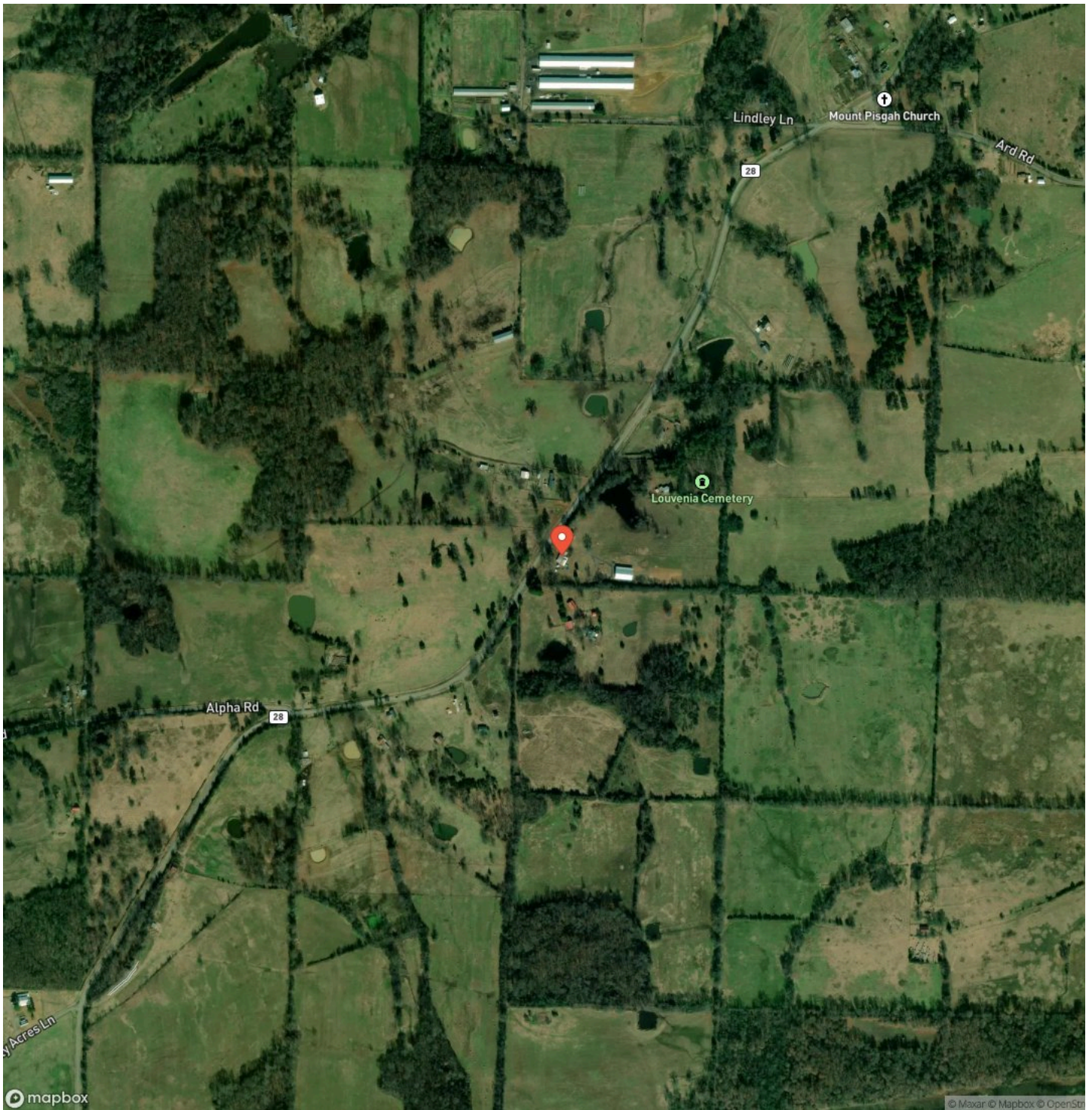
Locator Map



Locator Map



Satellite Map



DISCLAIMERS

Pictures contained within may contain areas outside the listed property for reference.



Mossy Oak Properties Field, Farm, and Homes
1200 Fort Street
, AZ 72923
(479) 480-7000
<https://www.mossyoakproperties.com/>

