

Cove 157
811 Polk Rd #21
Cove, AR 71937

\$628,000
157± Acres
Polk County



Cove 157
Cove, AR / Polk County

SUMMARY

Address

811 Polk Rd #21

City, State Zip

Cove, AR 71937

County

Polk County

Type

Hunting Land

Latitude / Longitude

34.417305 / -94.346593

Dwelling Square Feet

864

Bedrooms / Bathrooms

2 / 1

Acreage

157

Price

\$628,000

Property Website

<https://www.mossoakproperties.com/property/cove-157/polk/arkansas/99504/>



PROPERTY DESCRIPTION

Land For Sale | Cove, Arkansas

The Ultimate Recreational Retreat

Welcome to a premier 157 +/- acre sanctuary where rugged adventure meets quiet comfort. Whether you're an avid hunter, a timber investor, or someone seeking a secure family legacy property, this estate offers the perfect blend of natural beauty and functional infrastructure.

The Residence & Grounds

At the heart of the property sits a charming Dog Trot-style two-bedroom cabin, offering a nostalgic architectural nod to the South with modern-day comfort. The layout provides the perfect breeze-way for relaxing after a long day in the woods.

Key improvements include:

- Secure Infrastructure: A dedicated tornado shelter for peace of mind and a gated entrance for ultimate privacy.
- Storage & Utility: Three separate storage buildings provide ample space for gear.
- Accessibility: Boasting paved county road frontage, this retreat is easily accessible year-round without sacrificing its "middle of nowhere" feel.

A Sportsman's Paradise

This property is a turn-key haven for wildlife enthusiasts. The land features a diverse ecosystem of pine and hardwood timber, providing both immediate aesthetic value and long-term investment potential.

- Wildlife & Hunting: Experience an excellent deer and turkey population. The property is ready for the season with food plot areas, framed deer feeder hoists, deer stands, and elevated insulated deer blinds that are already strategically placed.
- Water Features: Water is abundant with a year-round creek and several seasonal creeks meandering through the acreage, serving as a magnet for local game.
- Trail System: A remarkable trail system weaves through the entire 157 acres, making it easy to navigate by foot, truck, or UTV.

Location & Recreation

Located just 5 minutes from Cove and 30 minutes from Mena's amenities, you are perfectly positioned between solitude and convenience.

- *Perfect location to be a short drive from the Mena Bike Park, which is in its first phase of construction.
- River Access: Only 7 miles from the Cossatot River, famous for its crystal-clear water and Class IV rapids.
- Commute: Easy access to HWY 71 ensures a smooth trip from any direction.
- *Short commute to thousands of acres of national forest and numerous activities.

Top Outdoor & Scenic Destinations

- **Queen Wilhelmina State Park (Mena): Located on Rich Mountain, offering scenic drives, hiking, and lodge views.**

- **Wolf Pen Gap Trail (Mena):** Popular for ATV/UTV riding and scenic mountain trails.
- **Cossatot River State Park (Wickes):** Known for its whitewater paddling and hiking trails.
- **Rich Mountain Firetower (Mena):** A high-elevation spot for panoramic views.
- **Shady Lake Recreation Area:** A nearby spot for swimming and fishing.

Local Attractions & Dining

- **Coffee Vault (Cove):** Located in a former bank building, offering coffee in a historic setting.
- **Mena Depot & Park:** Features local history, a visitor center, and Janssen Park.
- **The Lighthouse Drive-In (Wickes):** Known for BBQ and a wide selection of ice cream.

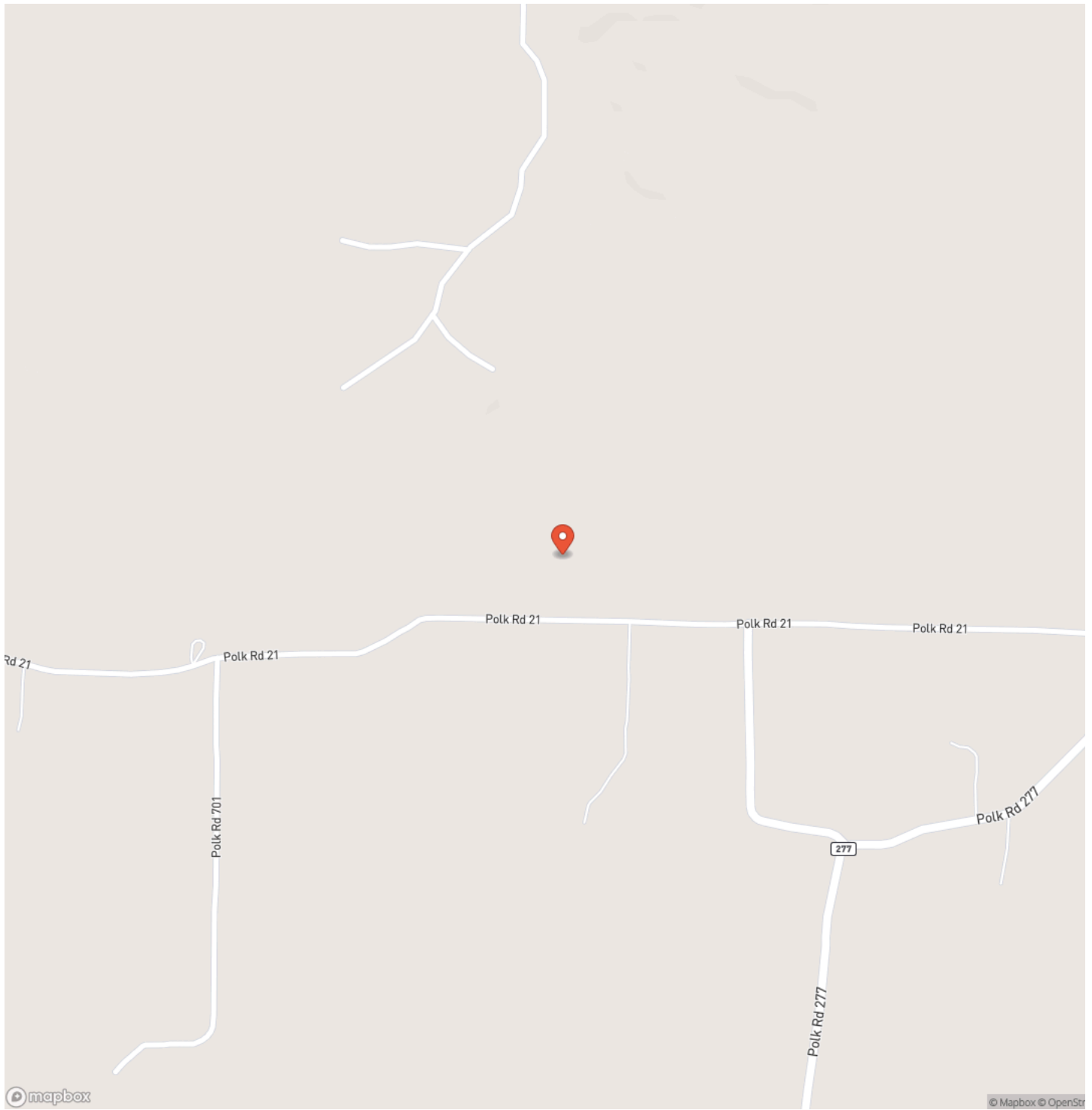
Regional Highlights (Within 1-2 Hours)

- **Hot Springs National Park:** Famous for historic Bathhouse Row and thermal springs.
- **Crater of Diamonds State Park (Murfreesboro):** The only public diamond-hunting site in the world.

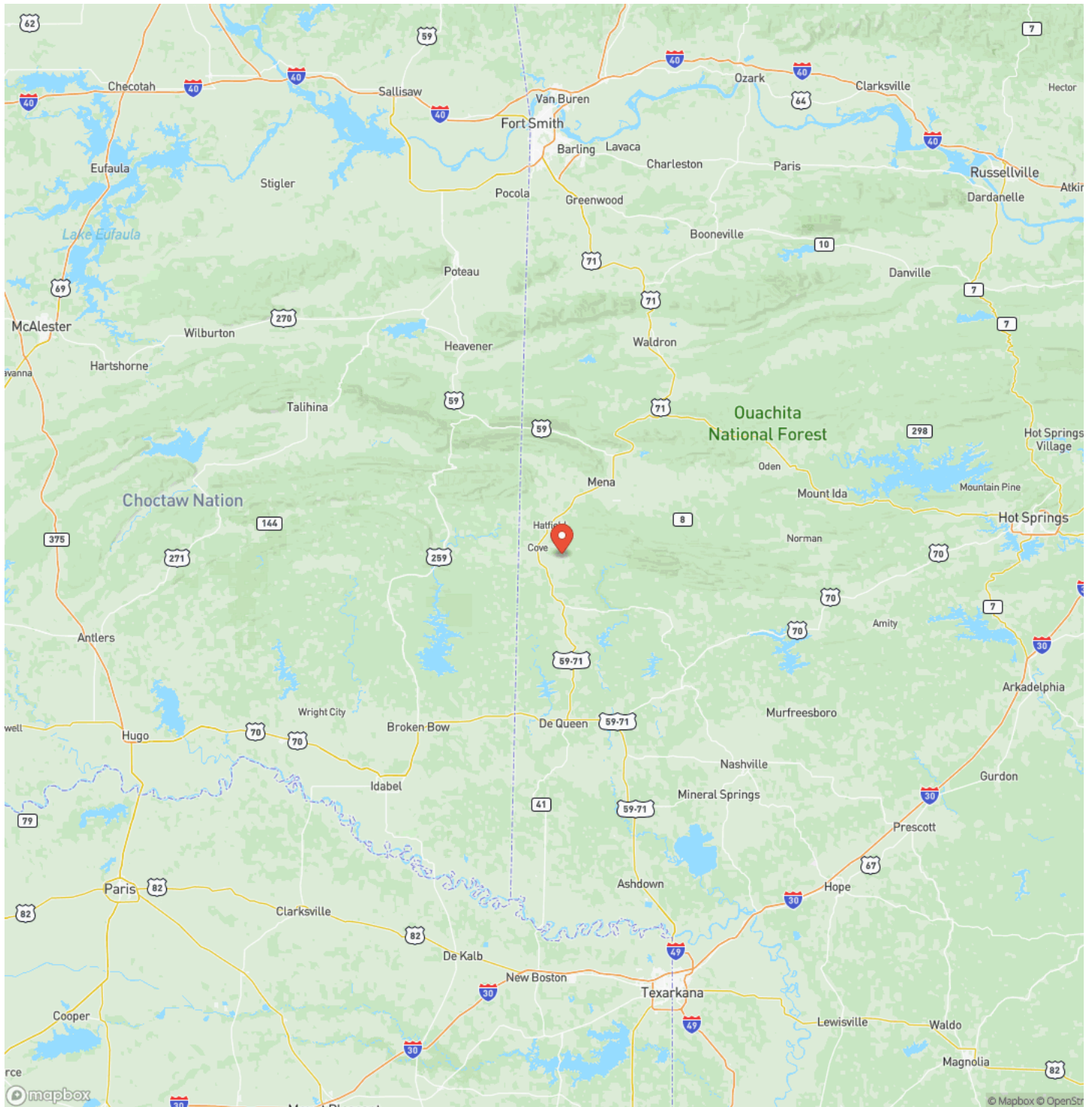
Cove 157
Cove, AR / Polk County



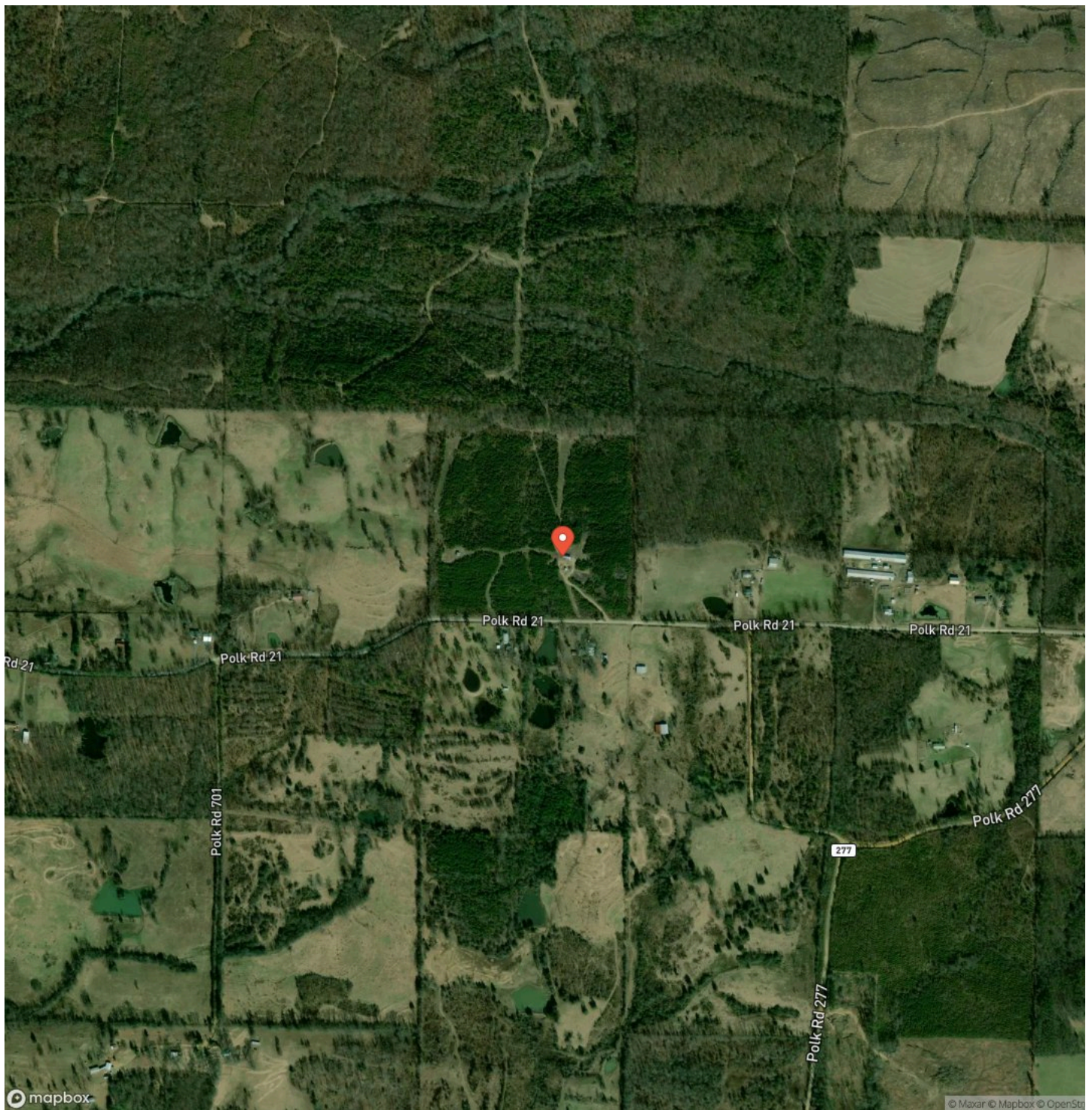
Locator Map



Locator Map



Satellite Map



DISCLAIMERS

Photos contained within may contact areas outside of the listed property. For reference only.



Mossy Oak Properties Field, Farm, and Homes
1200 Fort Street
, AZ 72923
(479) 480-7000
moparkansasland.com

