

Bear 73
TBD Polk Rd 720
Mena, AR 71953

\$475,000
73.26± Acres
Polk County



Bear 73
Mena, AR / Polk County

SUMMARY

Address

TBD Polk Rd 720

City, State Zip

Mena, AR 71953

County

Polk County

Type

Recreational Land

Latitude / Longitude

34.6158 / -94.28745

Acreage

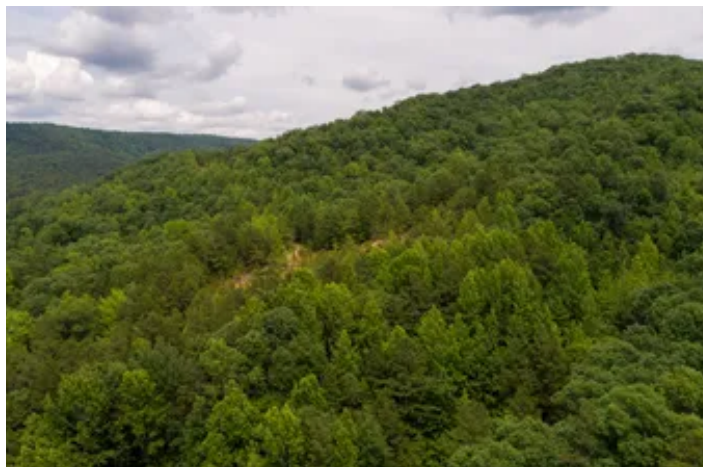
73.26

Price

\$475,000

Property Website

<https://www.mossoakproperties.com/property/bear-73/polk/arkansas/107090/>



PROPERTY DESCRIPTION

The Ultimate Bear Hunter's Haven - 73.26+/- Acres Bordering National Forest **Mena, Polk County, Arkansas GPS Coordinates: 34.6158, -94.28745**

Welcome to a premier recreational paradise tucked away just outside the city limits of Mena, Arkansas. Spanning **73.26 +/- pristine acres**, this heavily wooded tract is a proven, turn-key honey hole for big game hunting that also doubles as the perfect canvas for your dream off-grid mountain escape.

A Proven Hunting Legacy

If you are looking for a property with a track record, this is it. This land has been meticulously used and managed as a **bear hunting haven**, yielding highly successful, consistent yearly harvests.

- **Turn-Key Set Up:** The sale includes **two established stand sites** that have been actively baited and hunted for several years. They are primed and ready for many seasons to come.
- **National Forest Border:** The property directly borders **Ouachita National Forest** along its entire northern boundary, essentially extending your backyard into thousands of acres of protected, public wilderness.

Off-Grid Potential & Striking Views

Accessed via **Polk Road 720**, privacy and security are paramount here. The property features a secure, gated entrance leading you into total Ouachita Mountain seclusion.

While there are currently no utilities available, the land boasts a **perfectly flat, cleared bench** ideal for constructing an off-grid cabin, pitching a wall tent, or parking your recreational rigs. Positioned correctly, a cabin on this site could yield **breathhtaking, panoramic mountain views** that showcase the natural beauty of the region. *(Be sure to scroll through the listing photos to see the terrain and recent trail cam captures!)*

Location & Local Attractions

While you will feel miles away from civilization, you are remarkably close to modern conveniences and world-class outdoor recreation.

The Trails Are Calling

The property is located just a short distance from the highly anticipated **Mena Bike Park** project. Currently under construction, this massive trail development is set to become a premier destination for mountain biking in the central United States, promising a massive boost to local tourism and property values.

Local Highlights & Activities:

- **Mena City Limits:** Just a short drive down the mountain for easy access to restaurants, grocery stores, fuel, and local hospitality.
- **Wolf Pen Gap ATV Trails:** Located nearby, offering over 40 miles of high-quality loop trails for three- and four-wheelers through the Ouachita National Forest.
- **Queen Wilhelmina State Park:** Drive up the famous Talimena National Scenic Byway to enjoy stunning vistas, a historic lodge, and excellent hiking trails.
- **Water Recreation:** Spend your summers kayaking, canoeing, or fishing on the nearby Ouachita River or pristine mountain creeks.

Why This Property is a Must-Buy:

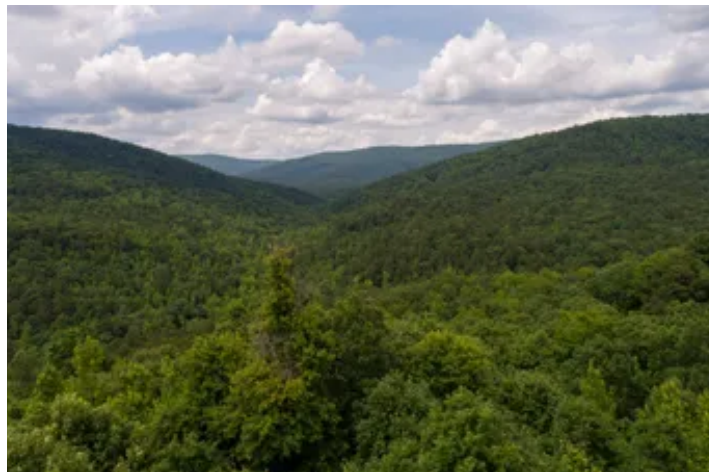
Unmatched Borders: Direct access to National Forest means your hunting boundaries are exponentially larger than your deeded acreage. **Proven Success:** Skip the guesswork of finding a good hunting tract; this land has a documented history of

successful bear harvests. **Investment Potential:** With the nearby bike park development drawing national attention to Mena, buying acreage this close to the action is a smart long-term play.

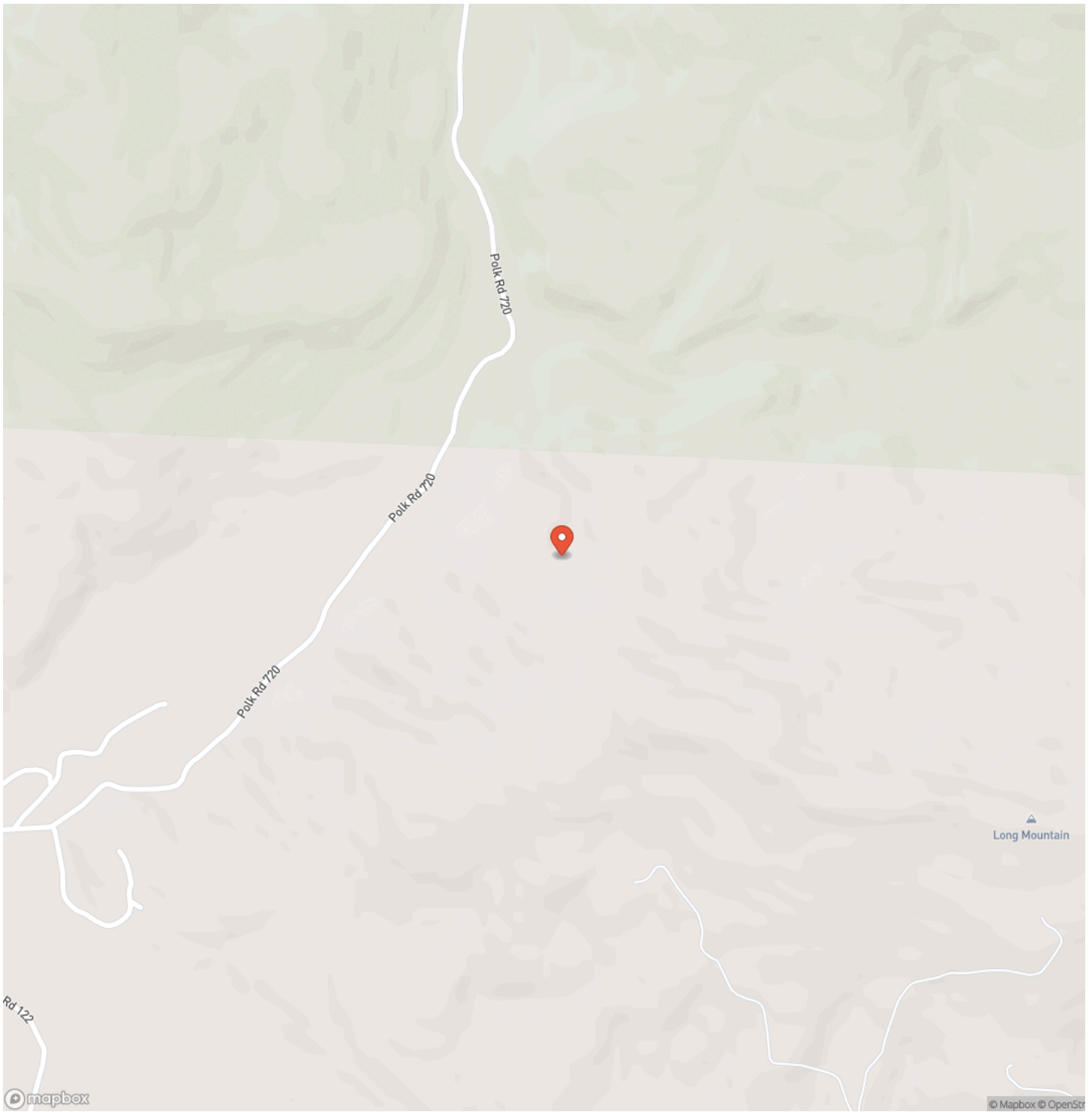
Serious inquiries only. Contact us today to schedule your private tour of this exceptional Ouachita Mountain property!



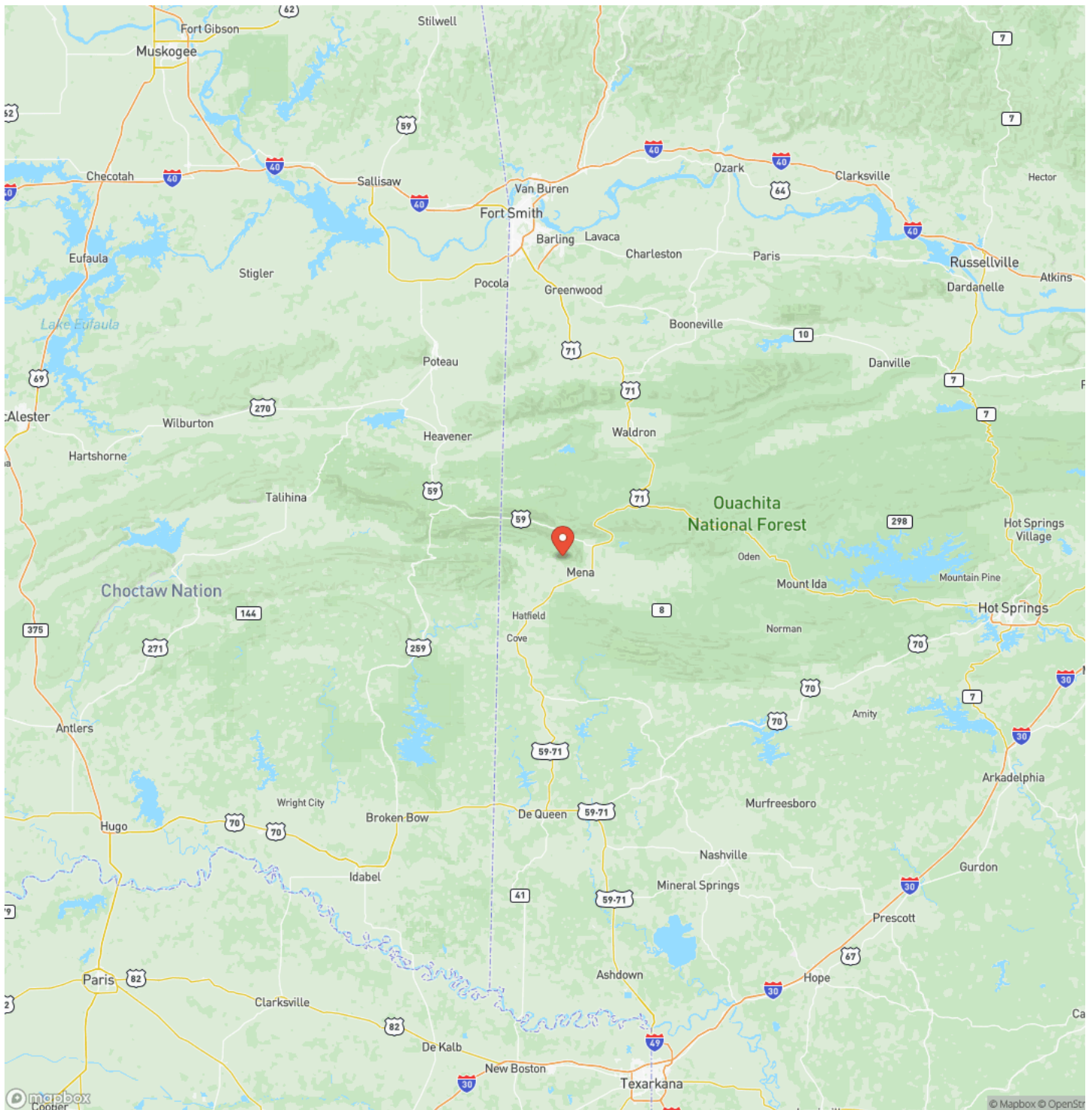
Bear 73
Mena, AR / Polk County



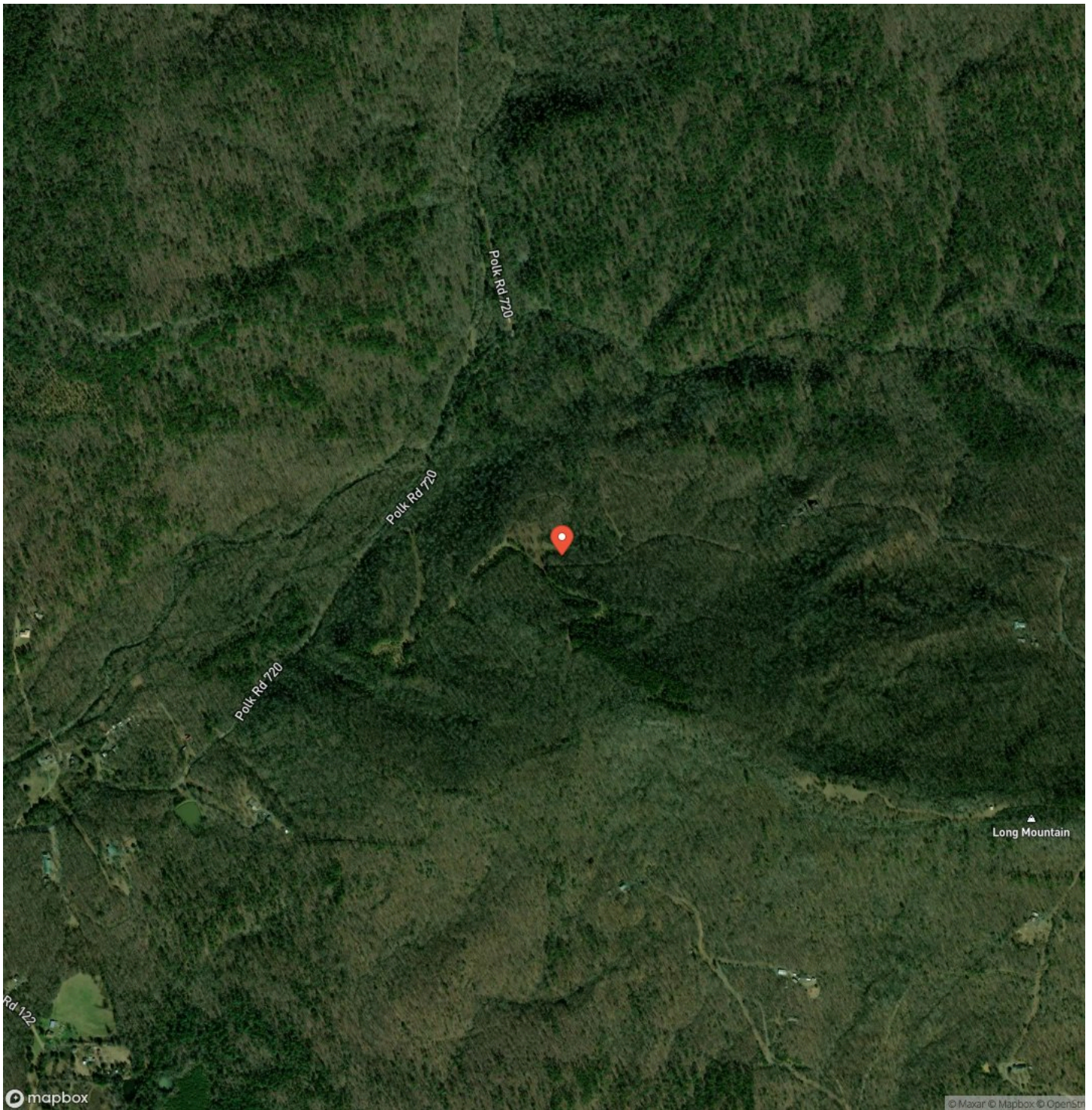
Locator Map



Locator Map



Satellite Map



DISCLAIMERS

Photos and videos may contain areas outside the listed property. To be used for reference only.



Mossy Oak Properties Field, Farm, and Homes

1200 Fort Street

Barling, AR 72923

(479) 480-7000

<https://www.mossoakproperties.com/>

