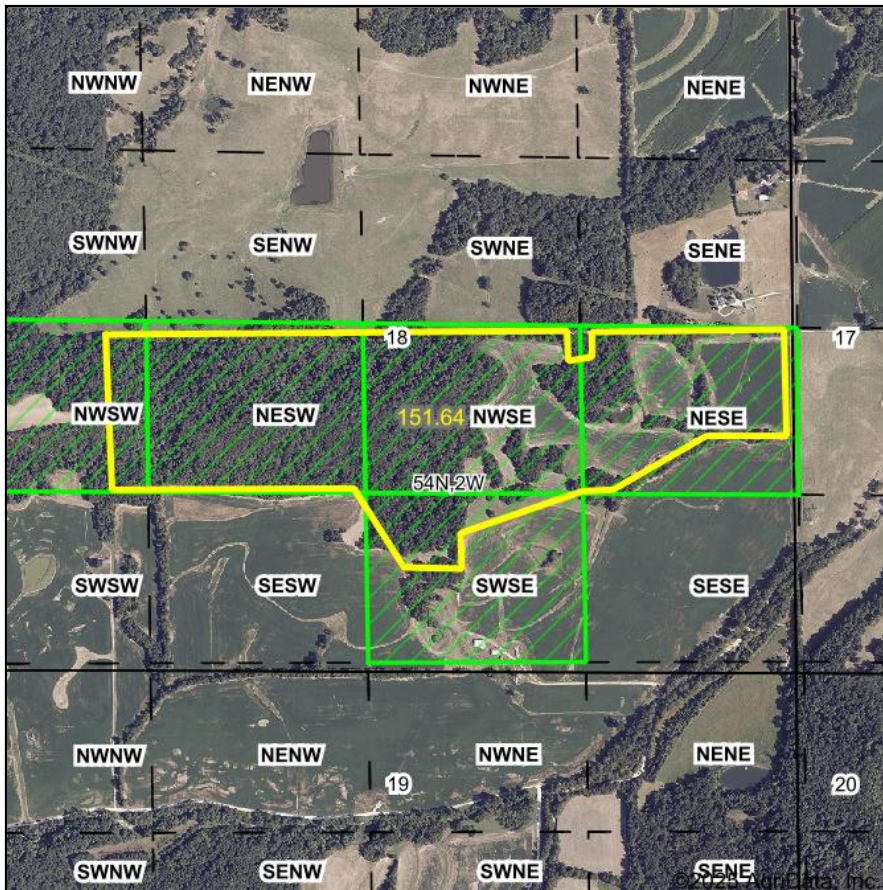
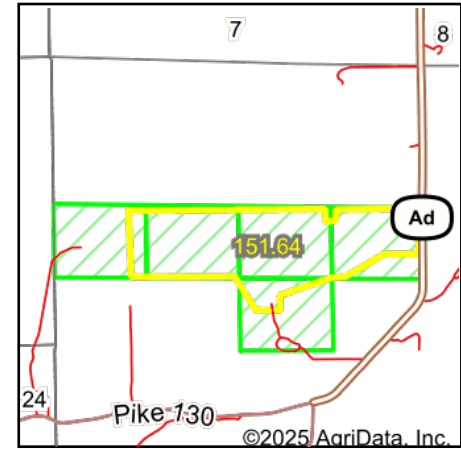


PLSS Legal Description



Map Center: 39° 26' 57.37, -91° 9' 56.98

0ft 1290ft 2580ft



Acres: 151.64
Date: 10/2/2025
Township: Buffalo
County: Pike
State: Missouri



Maps Provided By:



PLSS Source: Various State Sources

PLSS Note: No Government Lots. Quarters created by equally splitting the sections

Short Legal:

PT NWSW; NESW; NWSE; PT NESE; PT SWSE 18-54N-2W

Long Legal:

PART OF THE NW1/4 SW1/4; NE1/4 SW1/4; NW1/4 SE1/4; PART OF THE NE1/4 SE1/4; PART OF THE SW1/4 SE1/4 OF SECTION 18, TOWNSHIP 54 NORTH, 2 WEST, PIKE COUNTY, MISSOURI