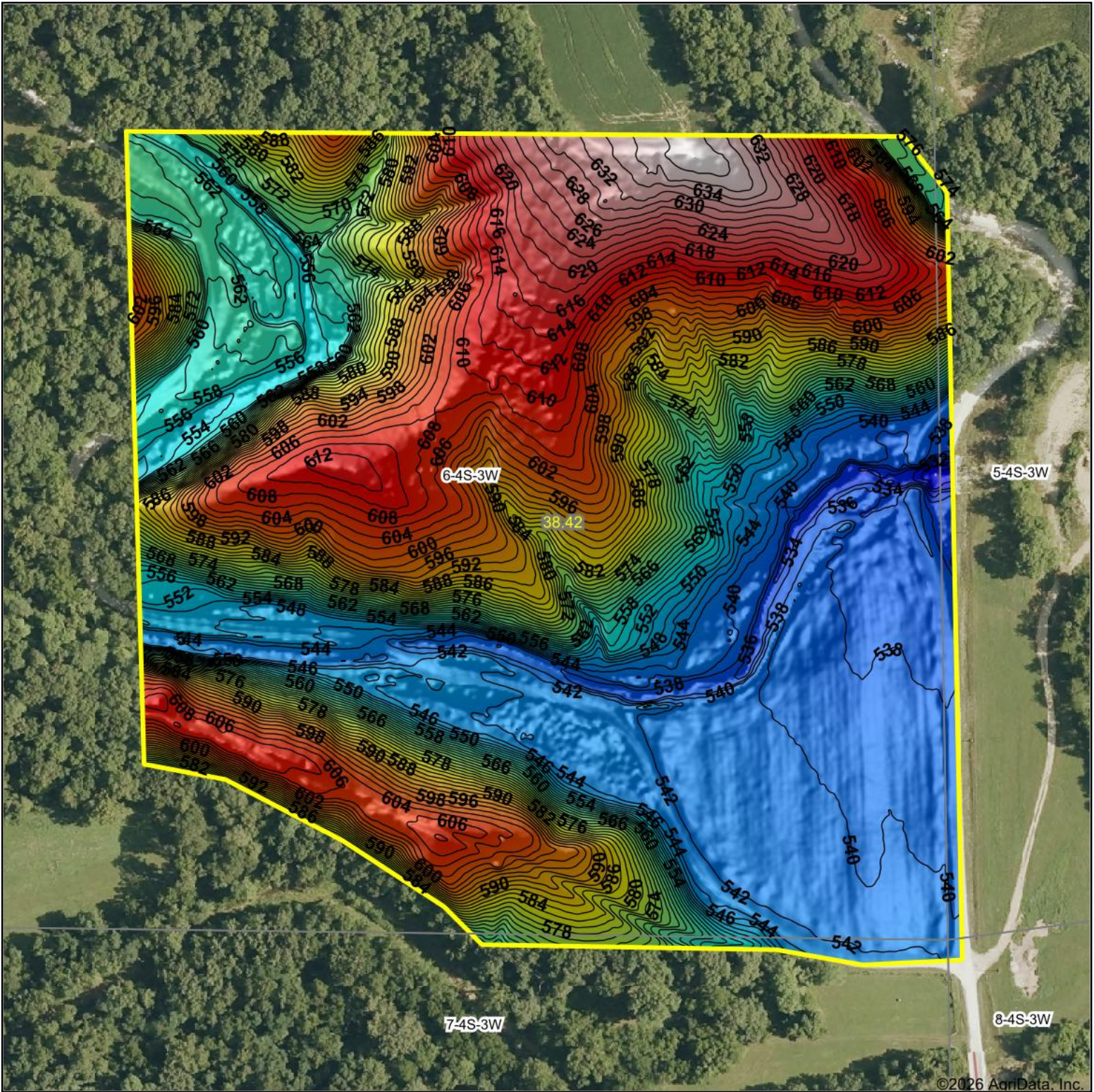


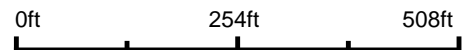
Topography Hillshade



©2026 AgriData, Inc.



Source: USGS 1 meter dem



Interval(ft): 2

Min: 527.2

Max: 639.6

Range: 112.4

Average: 574.8

Standard Deviation: 29.17 ft



5/6/2026

6-4S-3W
Pike County
Illinois

Boundary Center: 39° 44' 18.59, -90° 46' 58.14



Maps Provided By:



© AgriData, Inc. 2025

www.AgriDataInc.com