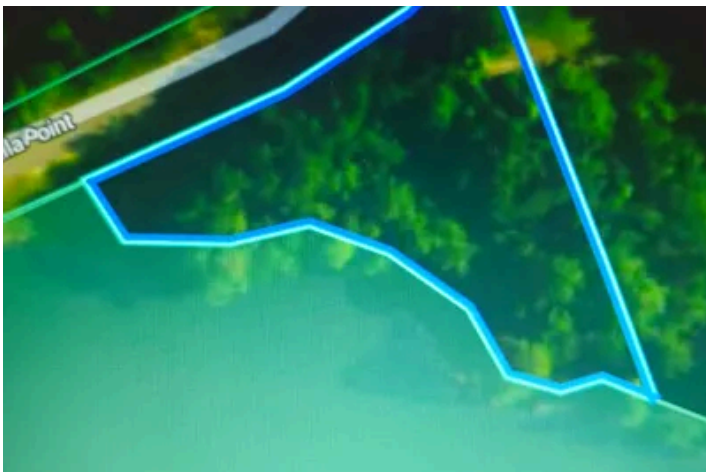


Beautiful View at Big Bay lake
158 Ella Point
Lumberton, MS 39455

\$165,000
0.59± Acres
Lamar County



**Beautiful View at Big Bay lake
Lumberton, MS / Lamar County**

SUMMARY

Address

158 Ella Point

City, State Zip

Lumberton, MS 39455

County

Lamar County

Type

Lakefront, Lot

Latitude / Longitude

31.194147 / -89.573672

Acreage

0.59

Price

\$165,000

Property Website

<https://www.mossoakproperties.com/property/beautiful-view-at-big-bay-lake/lamar/mississippi/84137/>



Beautiful View at Big Bay lake Lumberton, MS / Lamar County

PROPERTY DESCRIPTION

Unprecedented Opportunity - Motivated Price Drop!

Step into a world of serene beauty at 158 Ella Point, Lot 1, Red Canoe Phase III, where your dream waterfront lifestyle awaits! This remarkable .59-acre lot offers an astonishing 339.69 feet of pristine water frontage on the stunning Big Bay Lake, providing breathtaking views from every angle.

****What truly sets this property apart?*** The sellers are generously offering ****up to \$7,000 toward closing costs****—a rare and exceptional value in today's market. This unheard-of incentive makes owning this slice of paradise more attainable than ever!

Nestled within a gated community, this property promises not just tranquility but also the joys of living on one of Mississippi's largest privately-owned lakes. Imagine spending your days boating, fishing, and skiing, or simply unwinding as the sun sets over the water.

Conveniently located just 20 minutes from Hattiesburg, you can enjoy the peace of lakeside living while maintaining easy access to city amenities.

Seize this once-in-a-lifetime opportunity to invest in your future and create cherished memories in an idyllic setting. With its exceptional price point and extraordinary closing cost offer, this property won't last long! There are only so many sunsets we get make the ones that we have count!

****Don't wait—make your dream a reality today!***

**Beautiful View at Big Bay lake
Lumberton, MS / Lamar County**



Locator Map



Locator Map



Satellite Map



DISCLAIMERS

Upon purchase of this property, the buyer has two years to have a concrete bulkead put in place. This is gated community with restrictions for building residential homes.

Mossy Oak Properties Posey Land Company
105 W Chickasaw St Suite C
Brookhaven, MS 39601
(601) 597-9378
MossyOakProperties.com

