

WAVERLY TRACT
West Trace Creek Road
Waverly, TN 37185

\$995,000
398± Acres
Humphreys County



WAVERLY TRACT
Waverly, TN / Humphreys County

SUMMARY

Address

West Trace Creek Road

City, State Zip

Waverly, TN 37185

County

Humphreys County

Type

Recreational Land

Latitude / Longitude

36.07931 / -87.88341

Acreage

398

Price

\$995,000

Property Website

<https://compasslandpartners.com/property/waverly-tract-humphreys-tennessee/92405/>



WAVERLY TRACT

Waverly, TN / Humphreys County

PROPERTY DESCRIPTION

Welcome to the Waverly Tract, a sprawling +/- 398-acre property located in the heart of Humphreys County, Tennessee. Situated just 5 miles west of downtown Waverly and approximately 90 minutes west of Nashville, this property offers the perfect blend of accessibility and seclusion. For outdoor enthusiasts and nature lovers, the Tennessee River is a short 3-mile drive west, while the renowned Loretta Lynn's Ranch is only 10 miles to the south. Additionally, modern conveniences are close at hand, including Walmart, which is just 3 miles away.

The Waverly Tract boasts approximately 1,700 feet of paved road frontage along West Trace Creek Road, providing easy access to the property. An improved internal road system allows for seamless navigation throughout the acreage, ensuring you can explore every corner of this expansive parcel.

The recent timber harvest created an open landscape, ideal for wildlife habitat or future land improvements among the mixture of scattered hardwoods across the terrain.

There are no structures currently on the property, so the new owner has the freedom to create their vision without limitations. Additionally, there are no conservation easements in place, leaving the land open to a wide range of possibilities. Although there are no bodies of water on the property itself, its proximity to the Tennessee River provides abundant opportunities for boating, fishing, and recreation.

The Waverly Tract is ideal for outdoor enthusiasts, offering prime deer and turkey hunting. The natural setting and abundant wildlife make it a haven for hunters or anyone looking to experience the tranquility of nature.

With an incredible combination of size, location, and features, this property offers endless potential for recreation, investment, or personal use.

Key Features

- +/- 398 acres of land in Humphreys County, TN
- Located 5 miles west of downtown Waverly and 90 minutes from Nashville
- +/- 1,700 feet of paved road frontage along West Trace Creek Road
- Improved internal road system for access across the property
- Recently harvested timber with scattered hardwoods remaining
- No structures, providing open terrain for development
- No conservation easements, allowing for flexible use of the property
- Prime deer and turkey hunting opportunities
- Close proximity to the Tennessee River (3 miles) and Loretta Lynn's Ranch (10 miles)

Hunting Opportunities

The Waverly Tract is a haven for hunting enthusiasts, offering a prime environment for deer and turkey hunting. The open terrain, combined with scattered hardwood trees, creates ideal conditions for thriving wildlife. With no conservation easements restricting land use, hunters have the freedom to manage the property as they see fit, whether that involves installing food plots, creating hunting stands, or simply enjoying the land in its natural state.



The property's size and layout provide ample space for activity, making it possible to explore various hunting strategies across the +/- 398 acres. The absence of structures ensures that the land remains undisturbed, while the internal road system allows for easy access to all areas of the property. Whether you're a seasoned hunter or just beginning to explore the sport, the Waverly Tract is an immediate opportunity to experience the thrill of the outdoors in one of Tennessee's most beautiful regions.

Location Highlights

The Waverly Tract's location is truly one of its standout features. Tucked away just 5 miles west of downtown Waverly, the property offers the perfect balance of convenience and privacy. You can enjoy the charm of small-town living with quick access to local amenities, including grocery stores, restaurants, and schools. For those who need to travel farther, the property is located just 90 minutes west of Nashville, so it's an ideal getaway or investment property within easy reach of the city.

Outdoor enthusiasts will appreciate the property's proximity to the Tennessee River, which lies only 3 miles to the west. The river offers endless opportunities for fishing, kayaking, and boating.

Just 10 miles to the south, Loretta Lynn's Ranch is a unique cultural and historical attraction, drawing visitors from across the country to experience its music and heritage.

For day-to-day convenience, Walmart is located just 3 miles from the property, ensuring all your needs are easily met. Whether you're looking for a weekend retreat, a hunting property, or a blank slate for development, the Waverly Tract's prime location offers unparalleled opportunities to enjoy the best of both nature and modern amenities.

Contact Us

Don't miss your chance to own this incredible piece of land in Humphreys County, Tennessee! With +/- 398 acres of untouched potential, the Waverly Tract offers endless opportunities for outdoor recreation, hunting, and future development. The prime location, proximity to landmarks like the Tennessee River and Loretta Lynn's Ranch, and easy access to modern conveniences make it a truly unique investment.

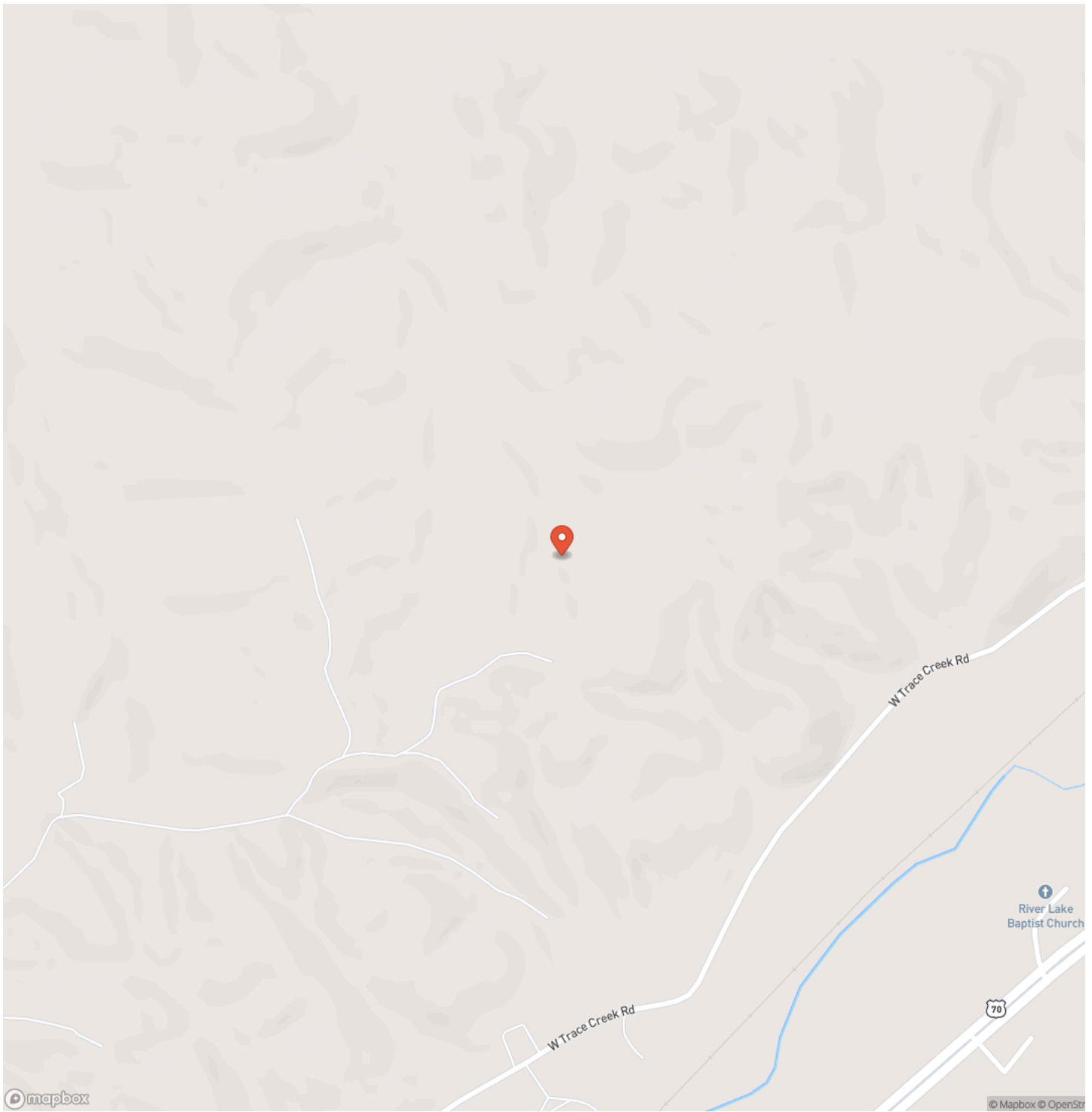
Contact us today to learn more about this remarkable property or to schedule a visit.



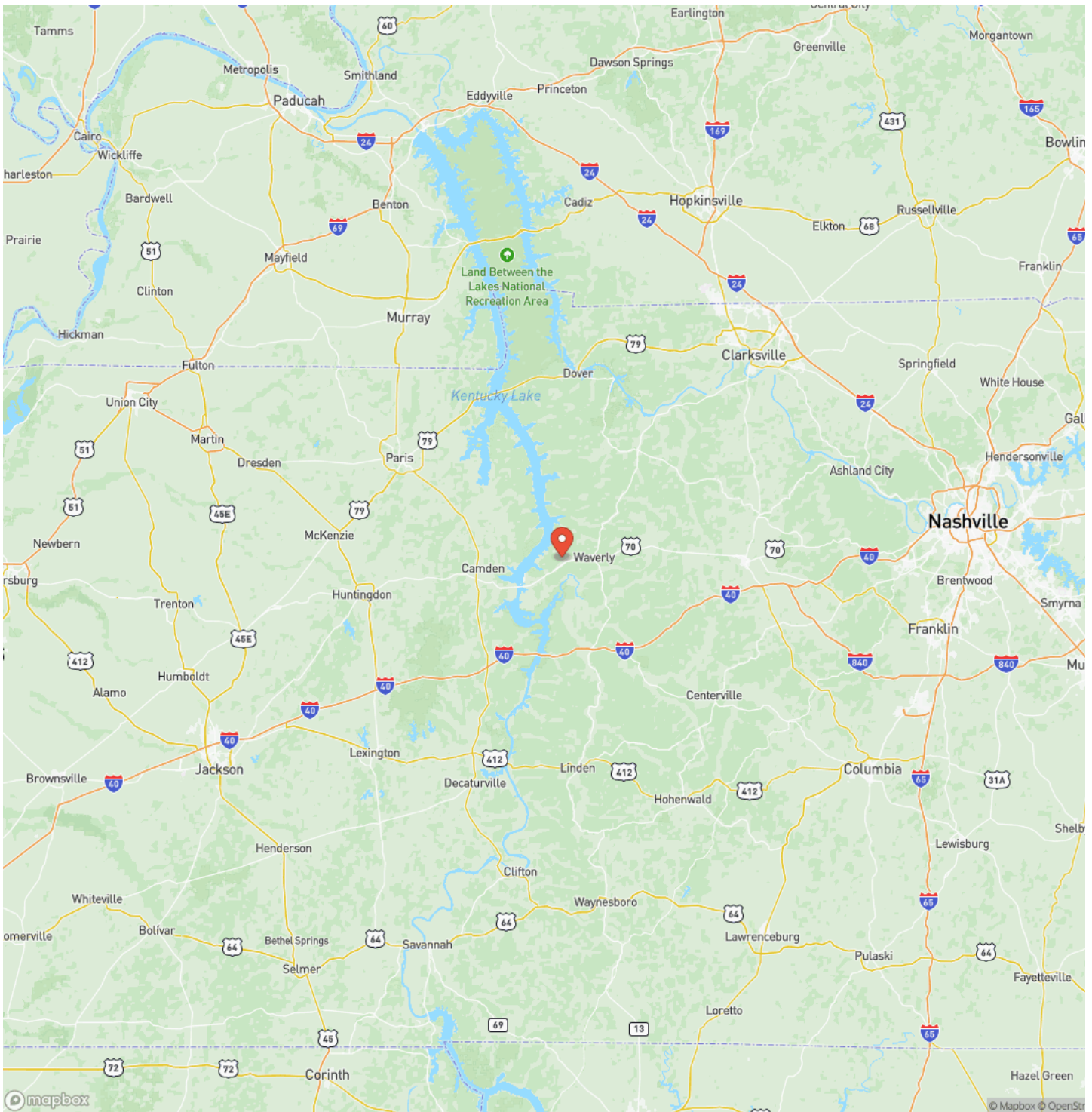
WAVERLY TRACT
Waverly, TN / Humphreys County



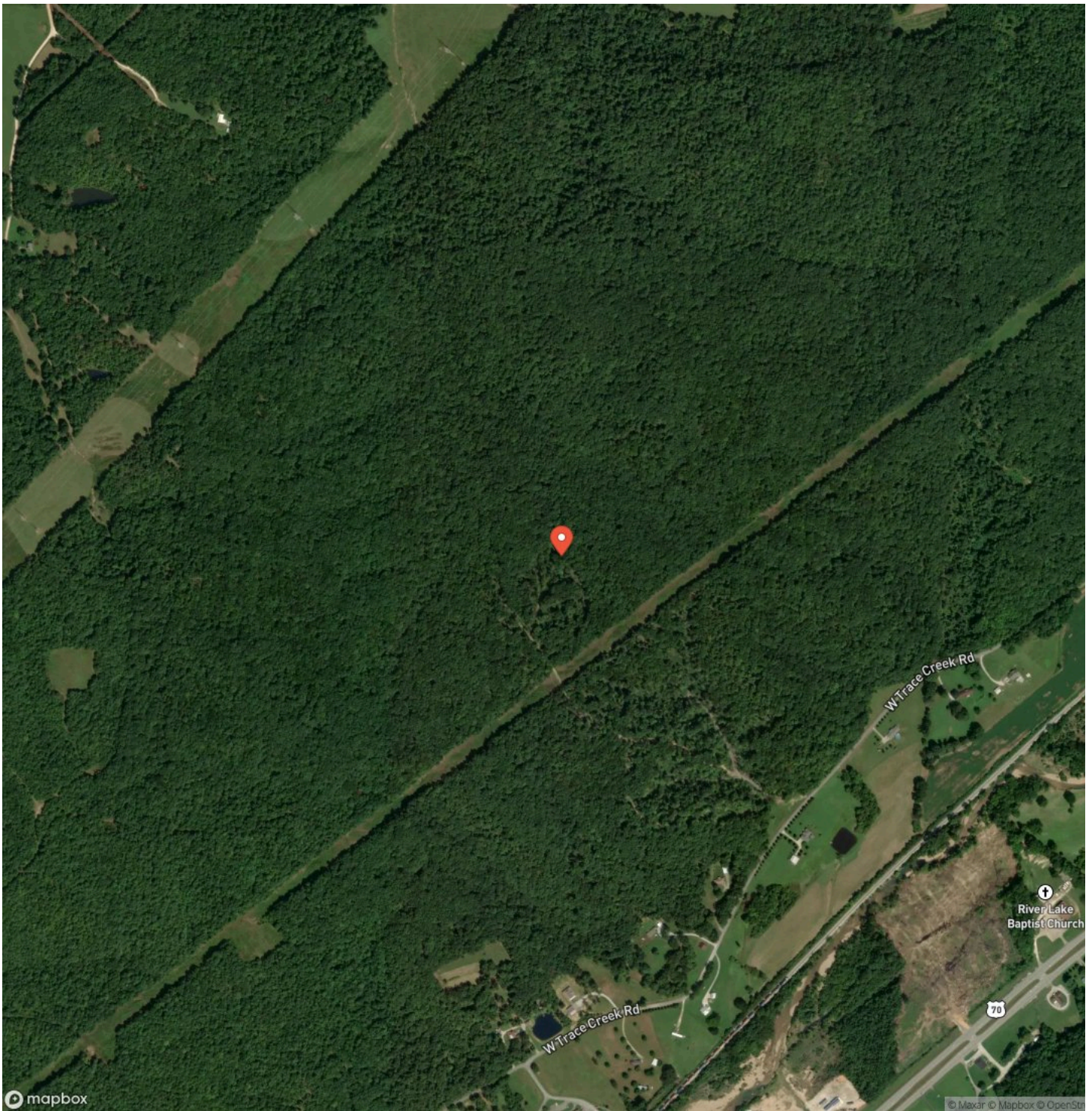
Locator Map



Locator Map



Satellite Map



DISCLAIMERS

Information in this brochure is provided solely for information purposes and does not constitute an offer to sell or advertise real estate outside the states in which broker or agent licensed. The information presented has been obtained from sources deemed to be reliable, but is not guaranteed or warranted by the agent, broker, or the sellers of these properties. This offering is subject to errors, omissions, prior sale, price change, correction or withdrawal from the market without notice. All references to age, square footage, income, expenses, acreage, carrying capacity, and land classification, etc. are approximate. Prospective buyers are chargeable with and expected to conduct their own independent investigation of the information and the property and to rely only on those results. Sellers reserve the right to accept or reject any and all offers without liability to any buyer or cooperating broker.

Maps are provided for illustration purposes only, the accuracy is not warranted. Parcels on interactive maps are not adjusted to match aerial backgrounds. This information is for reference purposes only and is not a legal document. Data maps contain errors. The seller and seller's agent are making known to all potential buyers that there may be variations between the location of the existing fence lines and the legal description of the deeded property. Seller and seller's agent make no warranties with regard to the location of the fence lines in relationship to the deeded property lines, nor does the Seller make any warranties or representations with regard to the specific acreage contained within the fenced property lines. Seller is selling the property in an "as is" condition, which includes the location of the fences as they exist. Boundaries shown on the accompanying maps are approximate, based on county parcel data. The maps are not to scale. The accuracy of the maps is not guaranteed. Prospective buyers are encouraged to verify fence lines, deeded property lines and acreages using a licensed surveyor at their own expense.



Compass Land Partners
452 Upchurch Ln
Walterboro, SC 29488
(800) 731-2278
<https://compasslandpartners.com/>

