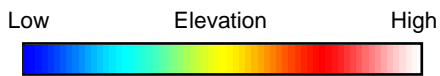
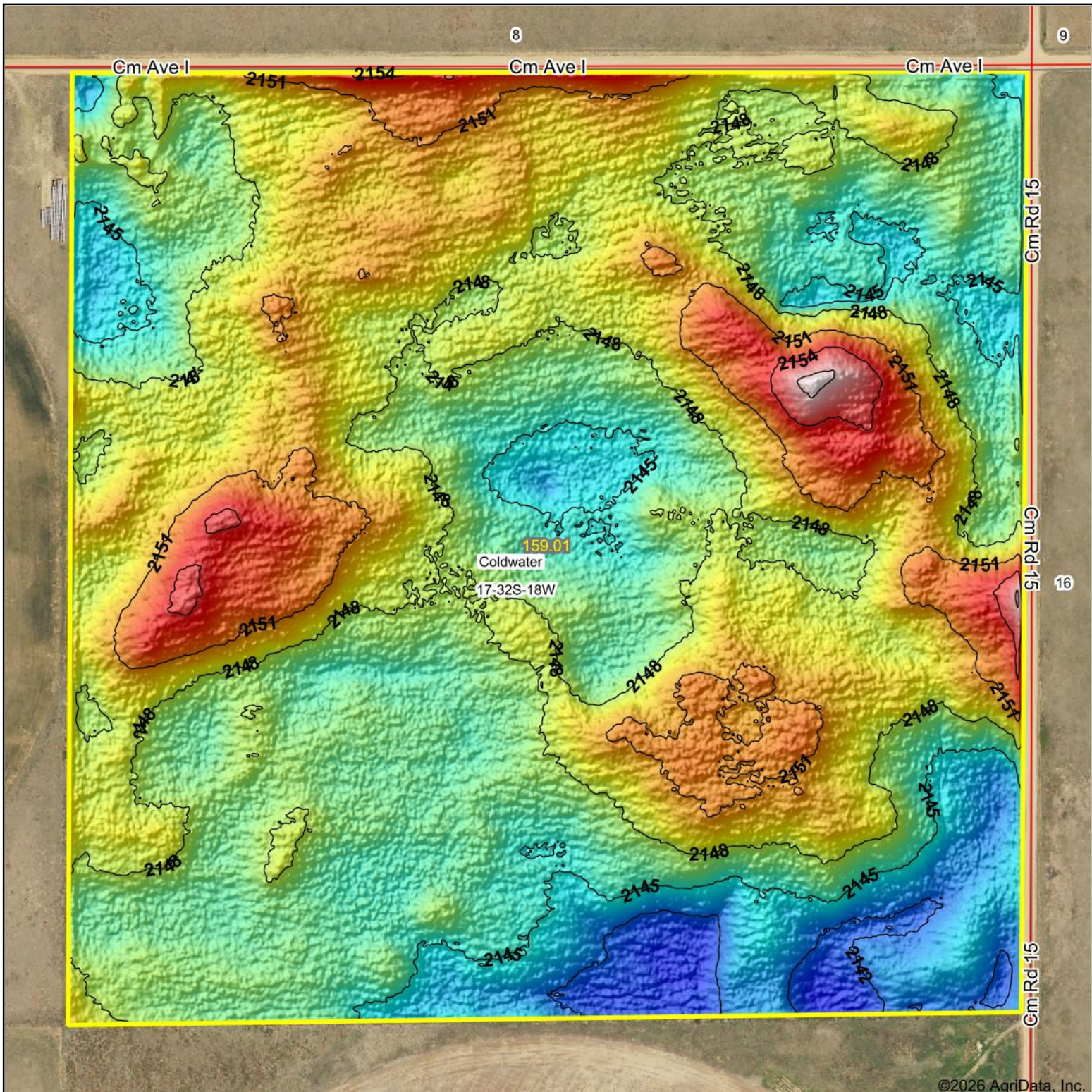


# Topography Hillshade



Source: USGS 1 meter dem

Interval(ft): 3

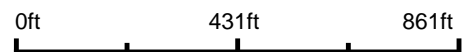
Min: 2,140.3

Max: 2,157.9

Range: 17.6

Average: 2,147.8

Standard Deviation: 2.66 ft



**17-32S-18W**  
**Comanche County**  
**Kansas**

Boundary Center: 37° 15' 45.31, -99° 17' 48.18



RED CEDAR LAND CO.

Maps Provided By:



© AgriData, Inc. 2025

www.AgriDataInc.com