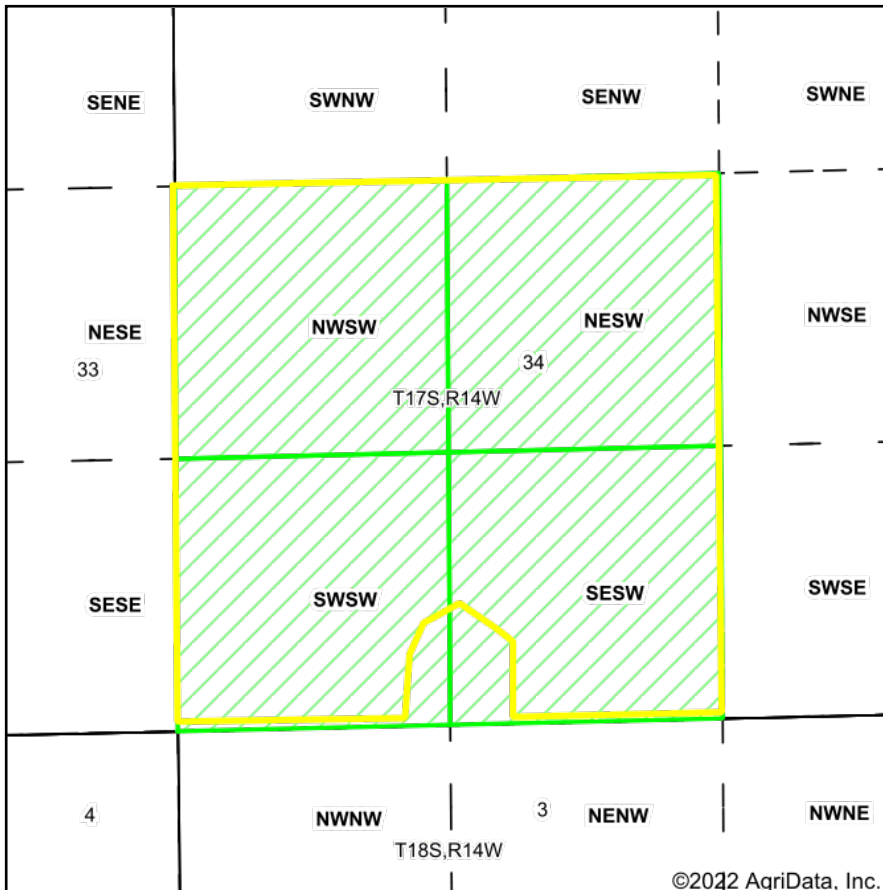
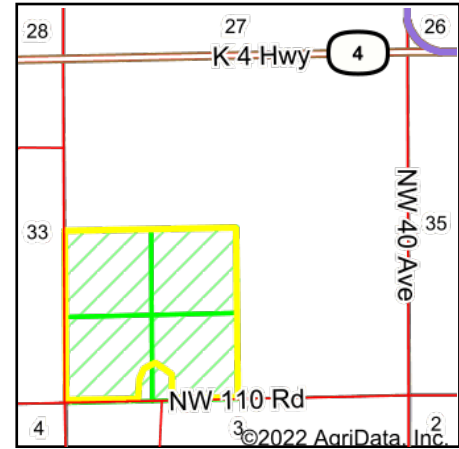


# PLSS Legal Description



Map Center: 38° 31' 29.7, -98° 51' 45.11

0ft 800ft 1601ft



Acres: 152.09  
Date: 5/11/2022  
Township: Albion  
County: Barton  
State: Kansas



Maps Provided By:



© AgriData, Inc. 2021

www.AgriDataInc.com



PLSS Source: Various State Sources

PLSS Note: No Government Lots. Quarters created by equally splitting the sections

Short Legal:

N2SW; SWSW; PT SESW 34-17S-14W

Long Legal:

N1/2 SW1/4; SW1/4 SW1/4; PART OF THE SE1/4 SW1/4 OF SECTION 34, TOWNSHIP 17 SOUTH, 14 WEST, BARTON COUNTY, KANSAS