

---

**Warren Shirer Estate Auction! Guns,  
Swords, Knives, Bayonets, Pewter, Pocket  
Watches and More!**

**2 NE 10th Ave.**

**St. John, KS 67576**

**\$1.00**

**1 +/- acres**

**Stafford County**



# Warren Shirer Estate Auction! Guns, Swords, Knives, Bayonets, Pewter, Pocket Watches and More!

St. John, KS / Stafford County

## SUMMARY

### Address

2 NE 10th Ave.

### City, State Zip

St. John, KS 67576

### County

Stafford County

### Type

Recreational Land, Hunting Land

### Latitude / Longitude

37.9563334 / -98.7271713

### Acreage

1

### Price

\$1.00

### Property Website

<https://redcedarland.com/detail/warren-shirer-estate-auction-guns-swords-knives-bayonets-pewter-pocket-watches-and-more-stafford-kansas/10246/>





**PROPERTY DESCRIPTION**

**Warren Shirer Estate Auction!**

**Guns, Swords, Knives, Bayonets, Pewter, Pocket Watches and More!**

Saturday, October 17, 2020 at 11:00 am

Location: Red Cedar Land Co., 1 Mile East of the Roundabout on Hwys 50/281, St. John KS

Mike Niedens, Auctioneer

Ryan Koelsch, Broker

Colt ~ Winchester ~ Browning

Doors Open for Viewing at 8:30 am

**Announcements day of sale take precedence over any other advertising material**

*Auctioneer's Note:*

*Warren Shirer has collected for over 75 years. This collection has Single Action Colts, Winchester 1873, Browning, German Lugers and many more. -Mike*

**GUNS**

1. **Pieper Arms 12ga** Side by Side Double Hammer
2. **Shapleigh King .410** Single Shot 20836X



3. **Iver Johnson Arms .410** Single Shot 45543B
4. **Win. Model 90 .22LR** 697523
5. **FAB National Military 6mm?** w/Sling. Bolt Action 10150
6. **R&A 10g Model 1901** Lever Action
7. **Fabrique National 12ga** Semi Auto Belgium Browning Patent OKG879
8. **Winchester Model 1873 .32 Cal** Hex Barrel 105457A
9. **Remington Model 4 .22** Short & Long Shot Single Shot Hammer 342005
10. **Remington Mod. 10A** 1903 12ga Pump 22116
11. **Remington 1100 12ga** Semi Auto "Like New" L647874
12. **US Springfield M1-Grand 30** Cal w/Sling and Bayonet MINT
13. **Remington Sportsmaster .22L** Single Action
14. **Win. Model 03 .22** Semi Auto 119513
15. **Win. Model 1906 .22** Pump 537175
16. **Springfield Stevens 87A .22L** Repeater
17. **S&W .22LR Revolver** 6 Shot w/Holster 6905
18. **Colt 1905 .45** Semi Auto 1911 Frame Nickel
19. **Ruger .22LR** w/Holster Single 6 Shooter 20-89655
20. **Colt Pocket Pistol .31** Cal Hex Barrel 320443
21. **Colt 1861 Army .36** Cal Reblued Top 29665
22. **Antique Percussion Pistol**
23. **Colt 1893 .41L** Single Action 149427
24. **Belgium Frontier Arm .45** Colt Pat



25. **1941 German Luger Mauser .9mm** WWI 9748
26. **French .22** Single Shot Hex Barrel
27. **Belgium .22** Single Shot
28. **French Pinfire .31** Cal? Pearl Handle
29. **Colt .45** Semi Auto WWI Commemorative Display NIB
30. **Win. Mod. 74 .22LR** Semi Auto 266766-A
31. **British .303** Military Bolt Action w/Clip and Bayonet 51474
32. **Japanese Military .6mm** Top Loader Bolt Action w/Bayonet
33. **Belgium Military .7mm** Bolt Action 648195
34. **British F.B. 1939** Military .7mm 366162
35. **Japanese Military .7mm** w/Bayonet and Sling 76205
36. **Win. Mod. 97 16ga** 853659
37. **Win. Mod. 74 .22** 31113-A
38. **Paige Lewis Arms Mod. 50 .22LR** Bolt Action Springfield Jr.
39. **Stevens Mod. 87A .22LR** Semi Auto
40. **Win. Mod. 1200 12ga** 2 3/4 " Pump L533040
41. **Stevens .22** Crack Shot L414
42. **Stevens 1907 12ga** Pump Hammerless 1460B
43. **British Military 1941 .7mm** Bolt Action w/Clip 22049
44. **Iver Johnson .32** Cal Reblued Break Over 1879 Patent
45. **1912 Vesta 7.65** Cal Semi Auto
46. **Forehand Arms 1887 .32** Cal Break Over A6663



47. **1884 Colt Police Positive .38** Special Pearl Handle
48. **Sport King Hi-Standard .22LR** Semi Auto 2450665
49. **Colt SA Army .38** WCF 4 3/4 " Barrel All Original. 1904 Hamilton Co. Sheriff Carry253535
50. **Colt Bisley .32** Cal 5 1/2 " Barrel Single 1 of 13,000 229019
51. **1910 Luger Mauser 9mm** Semi Auto WWI
52. **1860 Colt VS Army .44** Cal 8" Barrel
53. **WWI Colt .45** 1911 Commemorative Display Battle of Belleau
54. **WWI Colt .45 1911** Commemorative Display Battle of Chateau
55. **WWI Colt .45** Commemorative Display Battle of Belleau
56. **Bridge Gun Co. .410** Single Shot Break Over A497389
57. **Stevens .22** Single Shot
58. **Browning 12ga A5 VR** Semi Auto Belgium MINT 751PP02004
59. **Browning 12ga A5** Belgium PChoke 70G48135
60. **Win. Mod. 97 12ga** 998621
61. **Win. Mod. 12 12ga** Full Field Grade SuperX 3" 1545711
62. **Remington Mod. 31 12ga** 70536
63. **Mossberg 144LSB .22L** Target w/Sling
64. **Remington 870 Riot 12ga** Short Barrel Pump 1T077207V
65. **Win. Mod. 12 12ga** SuperX 3" 1638087
66. **Win. Mod. 88 .308** Lever Action H258249
67. **Win. Mod. 42 .410** 3" Long Barrel 5393
68. **Browning Citori O/U 12ga** "Like New" 31858



69. **Win. Mod. 12 16ga** 1439447

70. **Win. Mod. 1912 20ga** 134452

71. **Win. Mod. 12 12ga** Featherweight 1821949F

72. **Remington 1100 12ga** Semi Auto "Like New" L647843V

73. **Remington 1100 20ga** Semi Auto L361429K

74. **Browning BT99 12ga** Trap Single Shot Long Barrel MINT

75. **Remington 870 Youth 20ga** NEW IN BOX RS28160A

76. **7 Double Barrel Wall Hangers**

## **GERMAN DRESS DAGGERS & SWORDS**

**German Daggers w/Swastika and Sheath**

**Ammo Pouch**

**About 8 German Daggers**

**1907 Enfield Bayonet Military**

**1886 Belgium Bayonet**

**German Sword**

**US Military Bayonet**

**Japanese Sword w/Scabbard**

**E&F Horster Solingen w/Scabbard**

**1865 US Union Sword w/Scabbard**

**Samurai Japanese Sword**

**WWI German Sword w/Scabbard**

**Knights of Columbus Ivory Sword w/Scabbard**





**Nazi Sword** Lion Jeweled Ruby Head

## **MISC. AMMO, BUCKLES, PEWTER**

**8 Boxes 12ga Win. Ammo**

**2 Antique Win. 16ga Ammo Ranger**

**3 Boxes Win. .308**

**1 Box 10ga**

**3 Boxes 16ga**

**1 Box 35 Cal Remington**

**Oilfield Belt Buckles**

**Pocket Knives**

**Polland Pewter Sculptures** Limited Edition 30 Parcels incl.

"Apache Birdman" "Buffalo Pony" & "The Signal"

**Ducks Unlimited Decoys** 1. Wood Tony Tabber 2. Decanter 3. Red Head Decoy on Gentleman's Box 4.

3 Wood Mallard Decoys OLD #58 Original

## **POCKET WATCHES**

**C.H. Mayan** Open Face 14kt Gold w/Chain

**Elgin** 21 Jewel 10kt G.F.

**New York Standard** Ladies Gold Hunting Case

**Washington** Gold Hunting Case 25 yr.

**Waltham** Gold Hunting Case 17 Jewel 10 yr. Case



**Elgin** Gold Hunting Case 7 Jewel

**Swiss** Open Face 23 Jewel 20 yr. Case

**Waltham** Gold w/15 Jewel 20 yr. Case

**Illinois** Open Face 20 yr. Case

**Waltham** Open Face 20 yr. Case 23 Ruby Jewel

**Hamilton** Open Face Railroad 23 Jewel

**Burlington** Open Face 124kt G.F.

**Ladies America** 25 yr. Case

**Hamilton** Open Face Gold Majri L. Hagar 25 Jewel

**Hamilton** 21 Jewel 10kt G.F.

**Antique Silver Keywind Large**

**Plus MANY MORE**



**Warren Shirer Estate Auction! Guns, Swords, Knives, Bayonets, Pewter, Pocket Watches and More!**  
**St. John, KS / Stafford County**

---

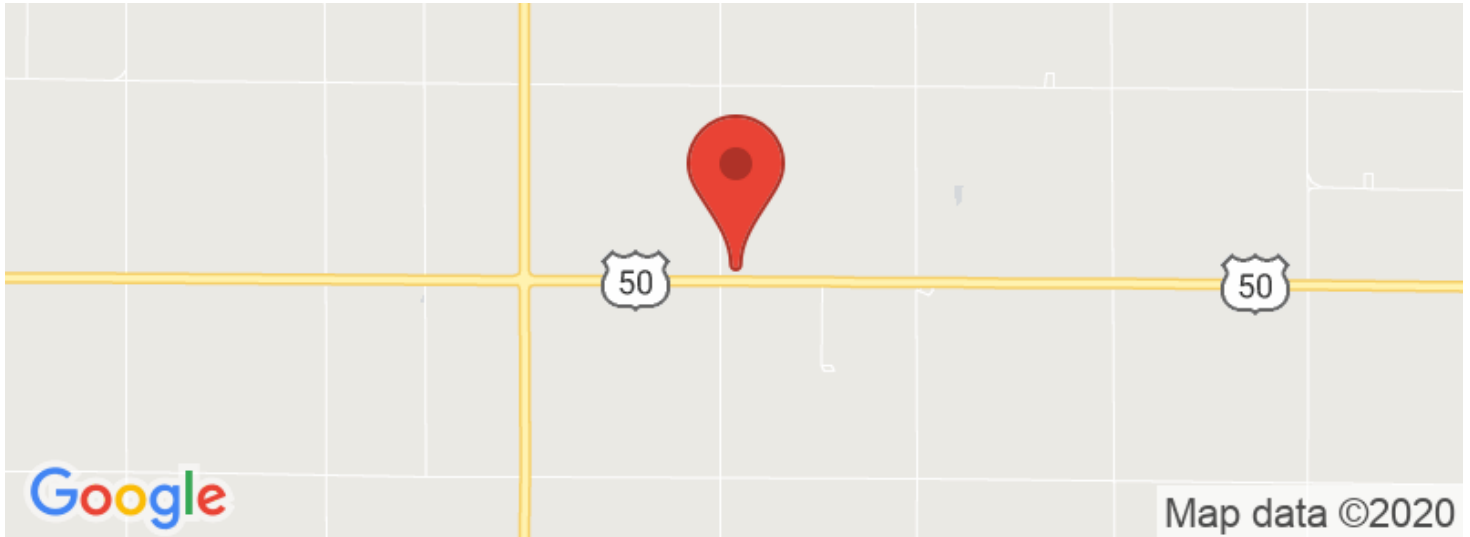


# Warren Shirer Estate Auction! Guns, Swords, Knives, Bayonets, Pewter, Pocket Watches and More!

St. John, KS / Stafford County

---

## Locator Maps



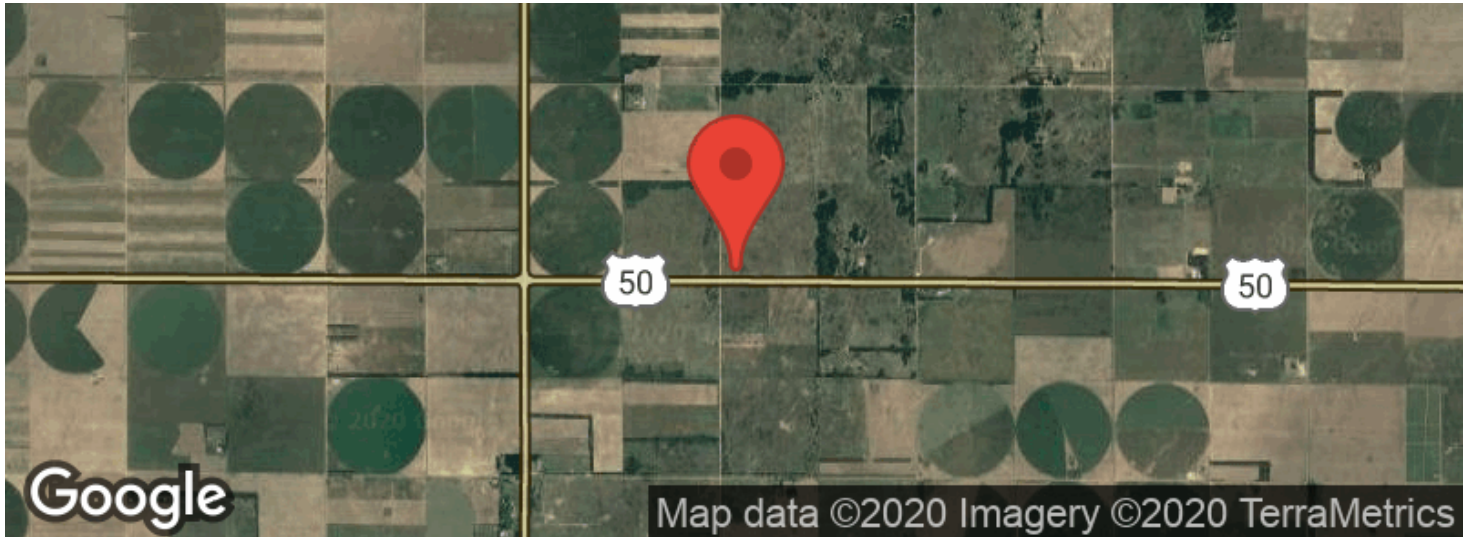


**Warren Shirer Estate Auction! Guns, Swords, Knives, Bayonets, Pewter, Pocket Watches and More!**

**St. John, KS / Stafford County**

---

## Aerial Maps



Warren Shirer Estate Auction! Guns, Swords, Knives, Bayonets, Pewter, Pocket Watches and More!  
St. John, KS / Stafford County

---

**LISTING REPRESENTATIVE**

For more information contact:



**Representative**

Mike Niedens

**Mobile**

(620) 793-0383

**Email**

mike@redcedarland.com

**Address**

2 NE 10 Ave

**City / State / Zip**

St John, KS, 67576

---

**NOTES**

---

---

---

---

---

---

---



## This image shows a blank sheet of white paper with horizontal ruling lines. The lines are evenly spaced and run across the width of the page. There are no margins, text, or other markings on the paper.



## **DISCLAIMERS**

Information in this brochure is provided solely for information purposes and does not constitute an offer to sell or advertise real estate outside the states in which broker or agent licensed. The information presented has been obtained from sources deemed to be reliable, but is not guaranteed or warranted by the agent, broker, or the sellers of these properties. This offering is subject to errors, omissions, prior sale, price change, correction or withdrawal from the market without notice. All references to age, square footage, income, expenses, acreage, carrying capacity, and land classification, etc. are approximate. Prospective buyers are chargeable with and expected to conduct their own independent investigation of the information and the property and to rely only on those results. Sellers reserve the right to accept or reject any and all offers without liability to any buyer or cooperating broker.

Maps are provided for illustration purposes only, the accuracy is not warranted. Parcels on interactive maps are not adjusted to match aerial backgrounds. This information is for reference purposes only and is not a legal document. Data maps contain errors. The seller and seller's agent are making known to all potential buyers that there may be variations between the location of the existing fence lines and the legal description of the deeded property. Seller and seller's agent make no warranties with regard to the location of the fence lines in relationship to the deeded property lines, nor does the Seller make any warranties or representations with regard to the specific acreage contained within the fenced property lines. Seller is selling the property in an "as is" condition, which includes the location of the fences as they exist. Boundaries shown on the accompanying maps are approximate, based on county parcel data. The maps are not to scale. The accuracy of the maps is not guaranteed. Prospective buyers are encouraged to verify fence lines, deeded property lines and acreages using a licensed surveyor at their own expense.





---

**Red Cedar Land Co.**  
2 NE 10th ave  
St john, KS 67576  
(620) 546-3746  
[www.redcedarland.com](http://www.redcedarland.com)

---

