

11543 Hwy 282
11543 Hwy 282
Mountainburg, AR 72946

\$190,000
1.58± Acres
Crawford County



11543 Hwy 282
Mountainburg, AR / Crawford County

SUMMARY

Address

11543 Hwy 282 null

City, State Zip

Mountainburg, AR 72946

County

Crawford County

Type

Residential Property

Latitude / Longitude

35.601217 / -94.191644

Taxes (Annually)

\$1,169

Dwelling Square Feet

1,416

Bedrooms / Bathrooms

3 / 2

Acreage

1.58

Price

\$190,000

Property Website

<https://www.mossoakproperties.com/property/11543-hwy-282/crawford/arkansas/110179/>



11543 Hwy 282
Mountainburg, AR / Crawford County

PROPERTY DESCRIPTION

Welcome to peaceful country living in Mountainburg, Arkansas! Nestled on 1.58 acres along Hwy 282, this charming 3-bedroom, 2-bath home offers the perfect blend of privacy, space, and convenience.

Property Highlights

- 3 Bedrooms | 2 Bathrooms
- 1.58 Acres of usable land with room to relax, garden, or enjoy the outdoors
- Located on Hwy 282 in the scenic Mountainburg area
- Spacious country setting with easy access to nearby cities

Conveniently Located

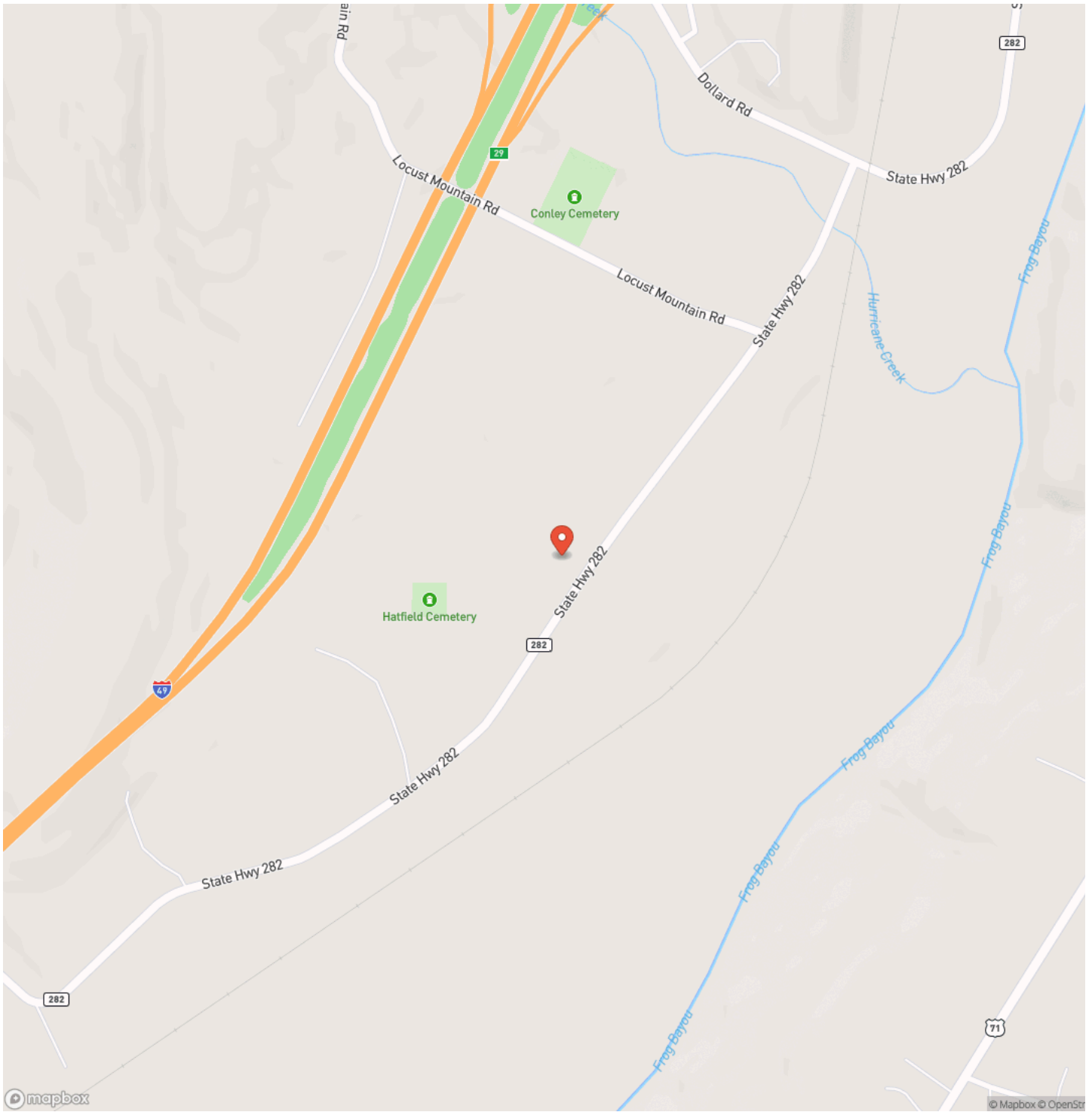
- 38 minutes to Fayetteville
- 29 minutes to Fort Smith
- 19 minutes to Van Buren
- 13 minutes to Alma

Whether you're commuting, heading to Razorback country, or enjoying all the amenities of the Fort Smith area, this location makes it easy to get where you need to go. With plenty of space to enjoy the outdoors and a comfortable layout inside, this property offers the perfect balance of privacy and accessibility. Don't miss your chance to own a slice of Arkansas country living!

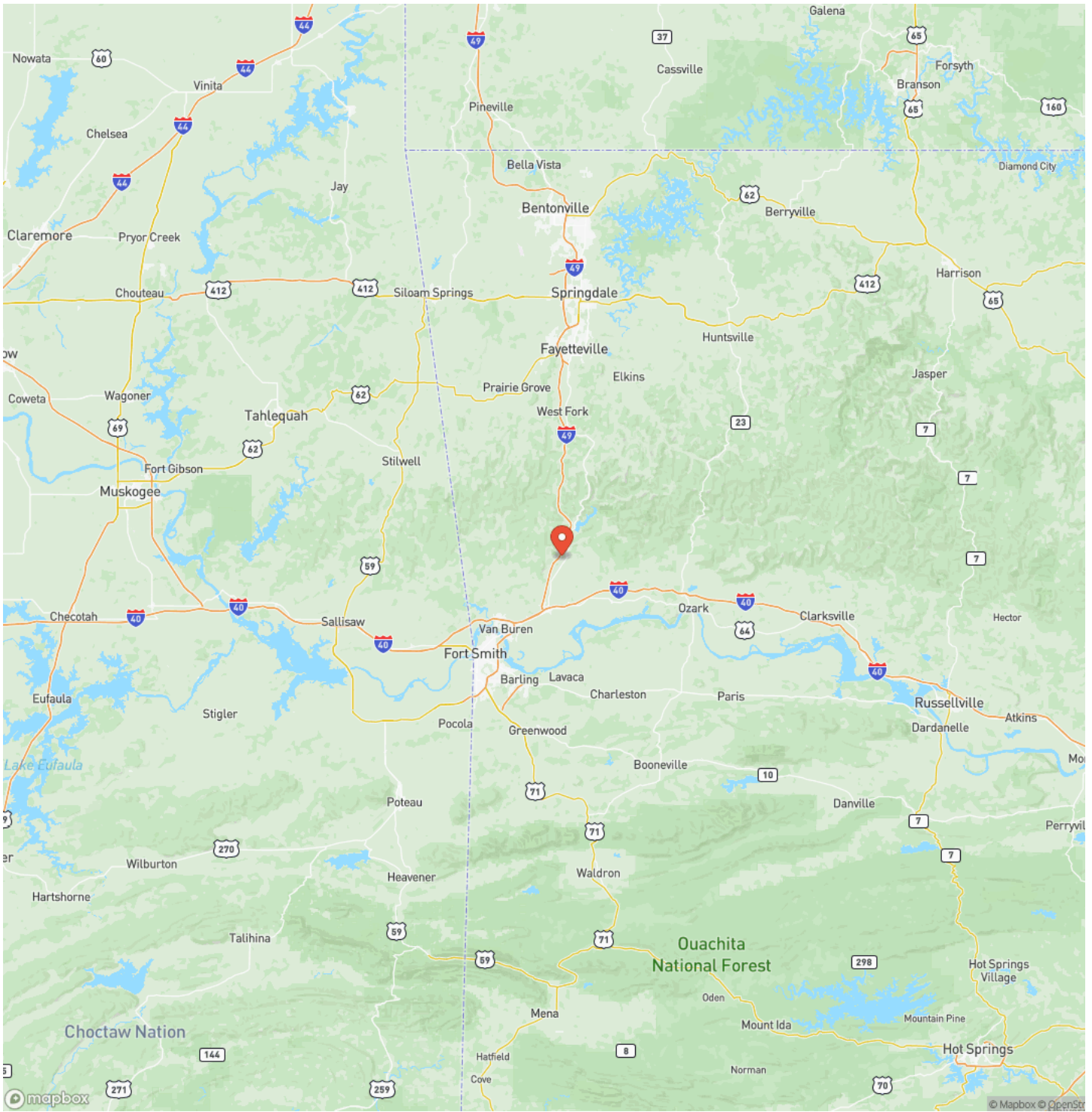
11543 Hwy 282
Mountainburg, AR / Crawford County



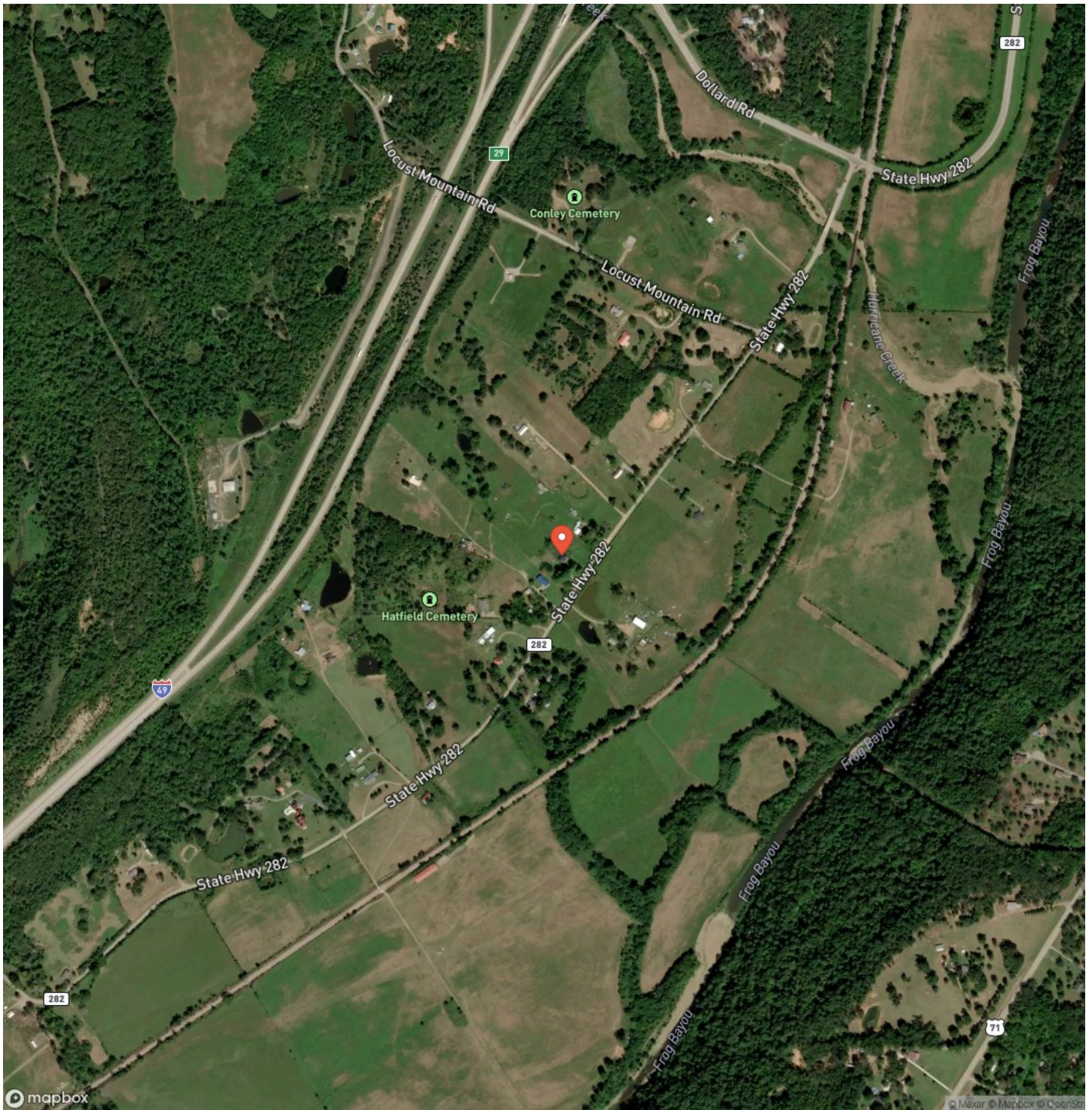
Locator Map



Locator Map



Satellite Map



DISCLAIMERS

Information in this brochure is provided solely for information purposes and does not constitute an offer to sell or advertise real estate outside the states in which broker or agent licensed. The information presented has been obtained from sources deemed to be reliable, but is not guaranteed or warranted by the agent, broker, or the sellers of these properties. This offering is subject to errors, omissions, prior sale, price change, correction or withdrawal from the market without notice. All references to age, square footage, income, expenses, acreage, carrying capacity, and land classification, etc. are approximate. Prospective buyers are chargeable with and expected to conduct their own independent investigation of the information and the property and to rely only on those results. Sellers reserve the right to accept or reject any and all offers without liability to any buyer or cooperating broker.

Maps are provided for illustration purposes only, the accuracy is not warranted. Parcels on interactive maps are not adjusted to match aerial backgrounds. This information is for reference purposes only and is not a legal document. Data maps contain errors. The seller and seller's agent are making known to all potential buyers that there may be variations between the location of the existing fence lines and the legal description of the deeded property. Seller and seller's agent make no warranties with regard to the location of the fence lines in relationship to the deeded property lines, nor does the Seller make any warranties or representations with regard to the specific acreage contained within the fenced property lines. Seller is selling the property in an "as is" condition, which includes the location of the fences as they exist. Boundaries shown on the accompanying maps are approximate, based on county parcel data. The maps are not to scale. The accuracy of the maps is not guaranteed. Prospective buyers are encouraged to verify fence lines, deeded property lines and acreages using a licensed surveyor at their own expense.

Mossy Oak Properties Field, Farm, and Homes

1200 Fort Street

Barling, AR 72923

(479) 480-7000

<https://www.mossyoakproperties.com/>

