

Crow Mountain 5  
TBD Crow Mountain Road  
Russellville, AR 72802

**\$125,000**  
5± Acres  
Pope County

**5 ACRES**  
*For Sale*  
BUILD | INVEST | CREATE  
CROW MTN ROAD

\*Lines and boundaries are approximate.

PEACEFUL

CONVENIENT

ENDLESS

GREAT INVESTMENT

**5 ACRES**  
CROW MOUNTAIN  
ROAD FRONTAGE



**Crow Mountain 5**  
**Russellville, AR / Pope County**

---

**SUMMARY**

**Address**

TBD Crow Mountain Road

**City, State Zip**

Russellville, AR 72802

**County**

Pope County

**Type**

Lot, Business Opportunity

**Latitude / Longitude**

35.291832 / -93.036654

**Acreage**

5

**Price**

\$125,000

**Property Website**

<https://www.mossoakproperties.com/property/crow-mountain-5-pope-arkansas/106775/>



## Crow Mountain 5 Russellville, AR / Pope County

---

### **PROPERTY DESCRIPTION**

#### **5 Acres on Crow Mountain Road - Ready to Build**

Exceptional 5-acre tract with frontage on Crow Mountain Road, offering an ideal combination of accessibility, convenience, and build-ready terrain. This prime property features mostly flat, usable ground, making it perfect for a custom home, barndominium, shop, or small hobby farm.

Water and electricity are available at the road, helping simplify the building process and reduce development costs. With ample space for a home, outbuildings, and recreational use, this tract provides the flexibility to create the lifestyle you've been looking for.

Enjoy a desirable location with easy road access while still offering the privacy and open space of country living. Whether you're ready to build now or invest for the future, this property presents an outstanding opportunity.

#### **Property Highlights:**

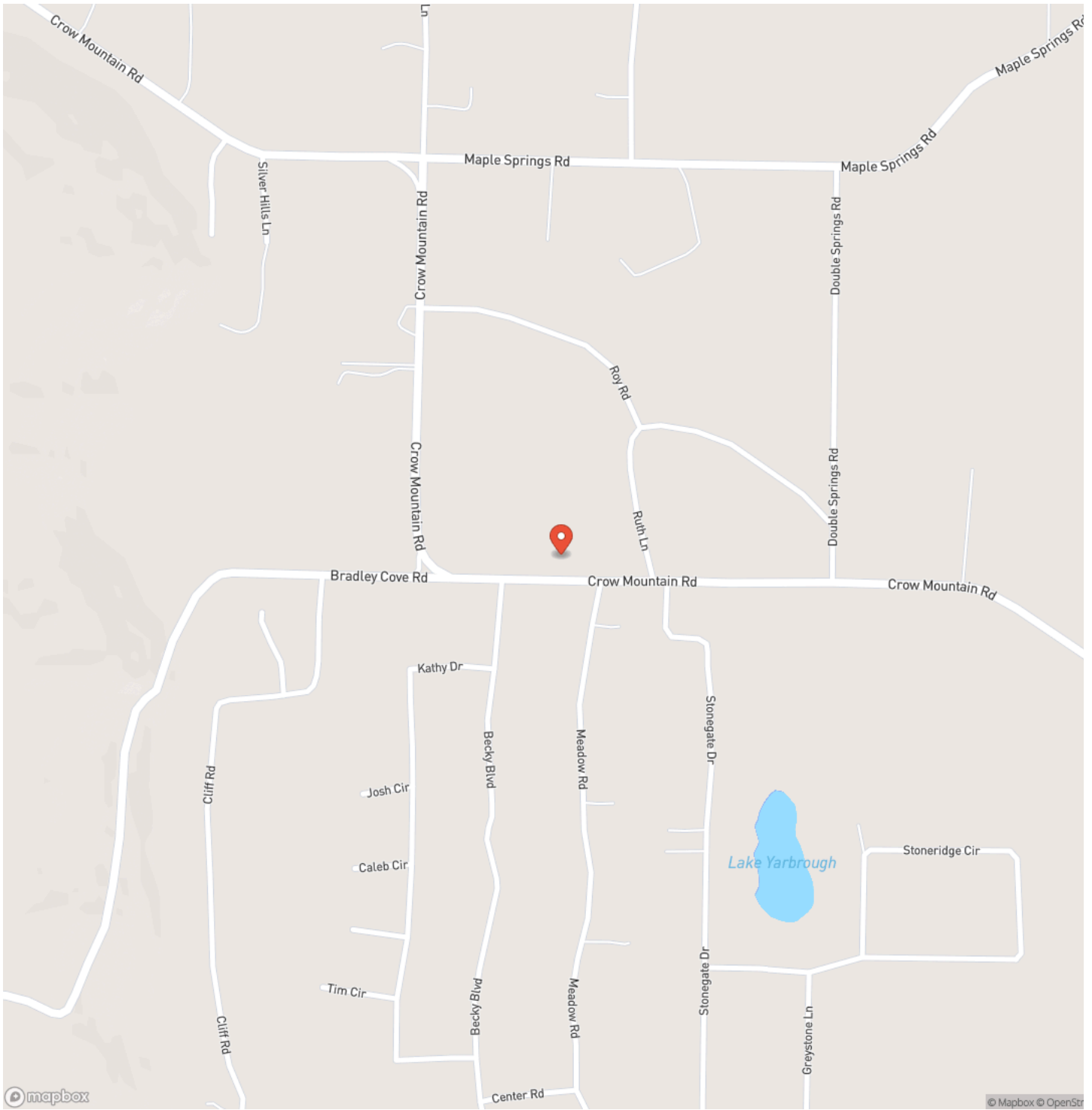
- 5 acres with Crow Mountain Road frontage
- Flat, build-ready terrain
- Water and electric available
- Prime location with convenient access
- Ideal for a home, shop, or hobby farm
- Plenty of room for outdoor recreation and expansion

A rare opportunity to own a versatile, ready-to-build acreage in a highly desirable area.

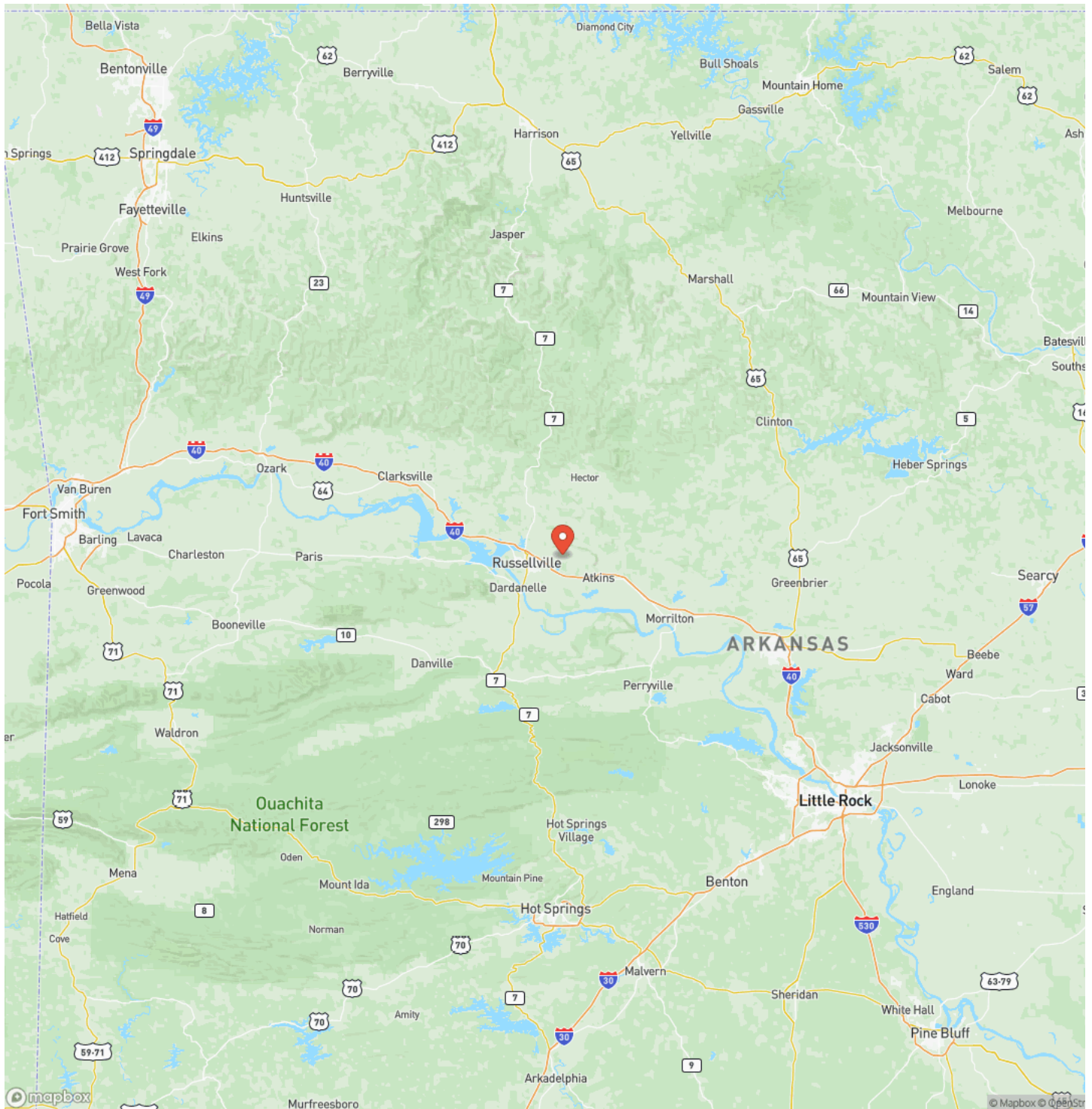
**Crow Mountain 5**  
**Russellville, AR / Pope County**



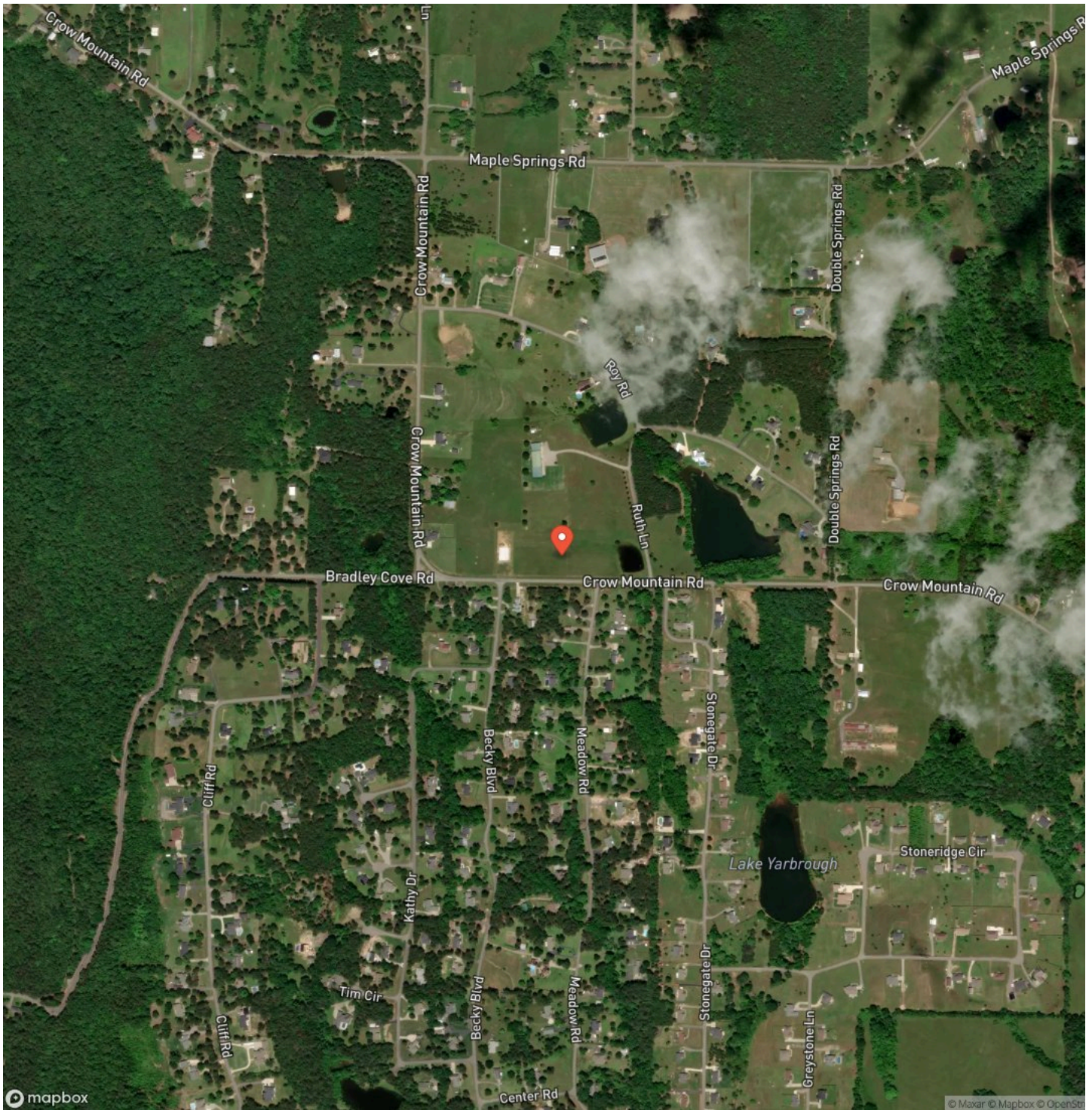
# Locator Map



# Locator Map



## Satellite Map







## **DISCLAIMERS**

Information in this brochure is provided solely for information purposes and does not constitute an offer to sell or advertise real estate outside the states in which broker or agent licensed. The information presented has been obtained from sources deemed to be reliable, but is not guaranteed or warranted by the agent, broker, or the sellers of these properties. This offering is subject to errors, omissions, prior sale, price change, correction or withdrawal from the market without notice. All references to age, square footage, income, expenses, acreage, carrying capacity, and land classification, etc. are approximate. Prospective buyers are chargeable with and expected to conduct their own independent investigation of the information and the property and to rely only on those results. Sellers reserve the right to accept or reject any and all offers without liability to any buyer or cooperating broker.

Maps are provided for illustration purposes only, the accuracy is not warranted. Parcels on interactive maps are not adjusted to match aerial backgrounds. This information is for reference purposes only and is not a legal document. Data maps contain errors. The seller and seller's agent are making known to all potential buyers that there may be variations between the location of the existing fence lines and the legal description of the deeded property. Seller and seller's agent make no warranties with regard to the location of the fence lines in relationship to the deeded property lines, nor does the Seller make any warranties or representations with regard to the specific acreage contained within the fenced property lines. Seller is selling the property in an "as is" condition, which includes the location of the fences as they exist. Boundaries shown on the accompanying maps are approximate, based on county parcel data. The maps are not to scale. The accuracy of the maps is not guaranteed. Prospective buyers are encouraged to verify fence lines, deeded property lines and acreages using a licensed surveyor at their own expense.

---

**Mossy Oak Properties Field, Farm, and Homes**

1200 Fort Street

Barling, AR 72923

(479) 480-7000

<https://www.mossoakproperties.com/>

---

