

Hulah Lake Getaway
247 3581 CR
Pawhuska, OK 74056

\$32,900
0.500± Acres
Osage County



Hulah Lake Getaway
Pawhuska, OK / Osage County

SUMMARY

Address

247 3581 CR

City, State Zip

Pawhuska, OK 74056

County

Osage County

Type

Lot

Latitude / Longitude

36.663425 / -96.340192

Taxes (Annually)

77

Acreage

0.500

Price

\$32,900

Property Website

<https://l2realtyinc.com/property/hulah-lake-getaway-osage-oklahoma/86971/>



Hulah Lake Getaway Pawhuska, OK / Osage County

PROPERTY DESCRIPTION

Near Hulah Lake – Camper, Sheds, and Outdoor Access!

Escape to nature with this versatile 0.5 acre property, perfectly located just 1.8 miles from the Rocky Ford boat ramp on Big Caney River, and only 4 miles from

Wah-Sha-She Campgrounds and the Outlet Channel. Surrounded by mature shade trees, this peaceful retreat offers both comfort and adventure.

Includes a 30-Foot Camper

Enjoy instant living space with a camper that features a standing washer and dryer—a rare convenience for extended stays or full-time living.

Includes a sturdy 20x20 carport provides covered parking or extra storage, and an in-ground storm cellar offers safety and peace of mind during Oklahoma weather.

One of Oklahoma's best hunting land. Whether you are after big game or game birds you'll find (Whitetail deer, Turkey, Quail, Ducks & Geese and Feral hogs)

Minutes away from Hulah Lake, known for excellent fishing (Largemouth bass, Crappie, Bluegill & Sunfish, Channel & flathead catfish)

Boat ramps and fish cleaning stations nearby.

Convenient Location with Big City Access. Located just Northwest of Pawhuska, this rural retreat offers a peaceful country life without sacrificing access to larger cities. Bartlesville, OK and Ponca City are both within 45 minutes offering mid-sized conveniences closer to home. Only 1 hour North from Tulsa, OK and 2 hours South from Wichita, KS making shopping, dinning and urban amenities an easy drive away.

Features:

- Storage and Expansion Potential
- 20x20 Carport
- Two portable sheds are included, with washer/dryer hookups in one, ideal for storage, workshop use, or future upgrades.
- In-ground storm cellar
- Natural Beauty & Prime Location
- Minutes from Hulah Lake's 3,500 surface acres for boating, fishing, and recreation
- Hulah Lake common game fish include (Largemouth bass, Black crappie, Flathead catfish, Chanel & Blue catfish)
- 21,500+ acres of public hunting and fishing access nearby
- Quiet, lightly wooded setting with room to grow or build
- 1.8 miles from Rocky Ford boat ramp on Big Caney River
- 4 miles from Wah-Sha-She Campgrounds and Outlet Channel
- 6-7 miles southeast Downtown Pawhuska is full of character, boutique shops, cafes and unique Western Charm
- 18 miles to Copan, Oklahoma
- 22 miles to Bartlesville, Oklahoma
- 44 miles to Ponca city , Oklahoma
- 56 miles to Tulsa, Oklahome (Closest Major International Airport)
- 120 miles to Wichita, Kansas

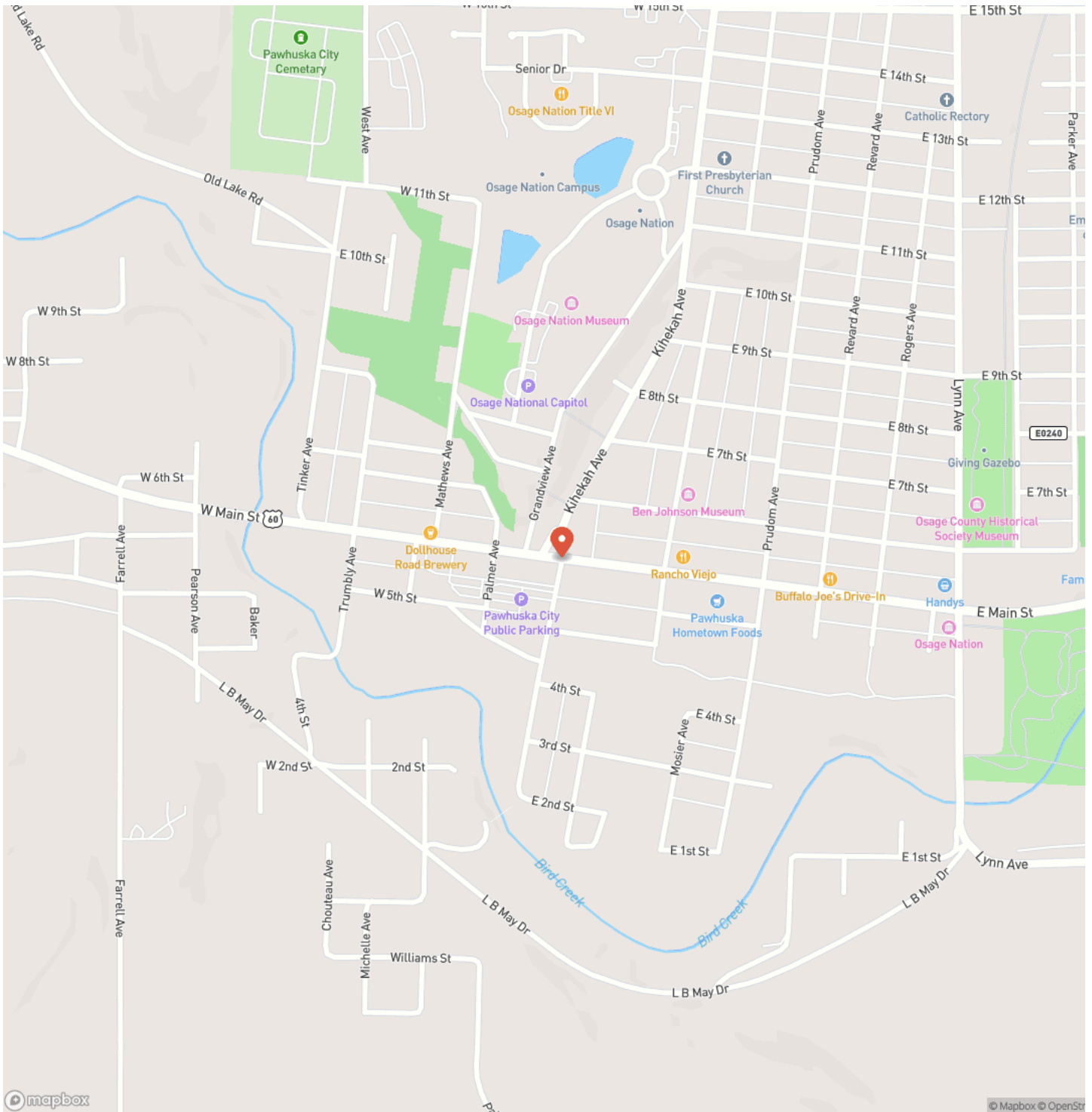
Perfect for a weekend getaway, a hunting basecamp, or a peaceful homestead. This property offers unbeatable access to Oklahoma's outdoor treasures.



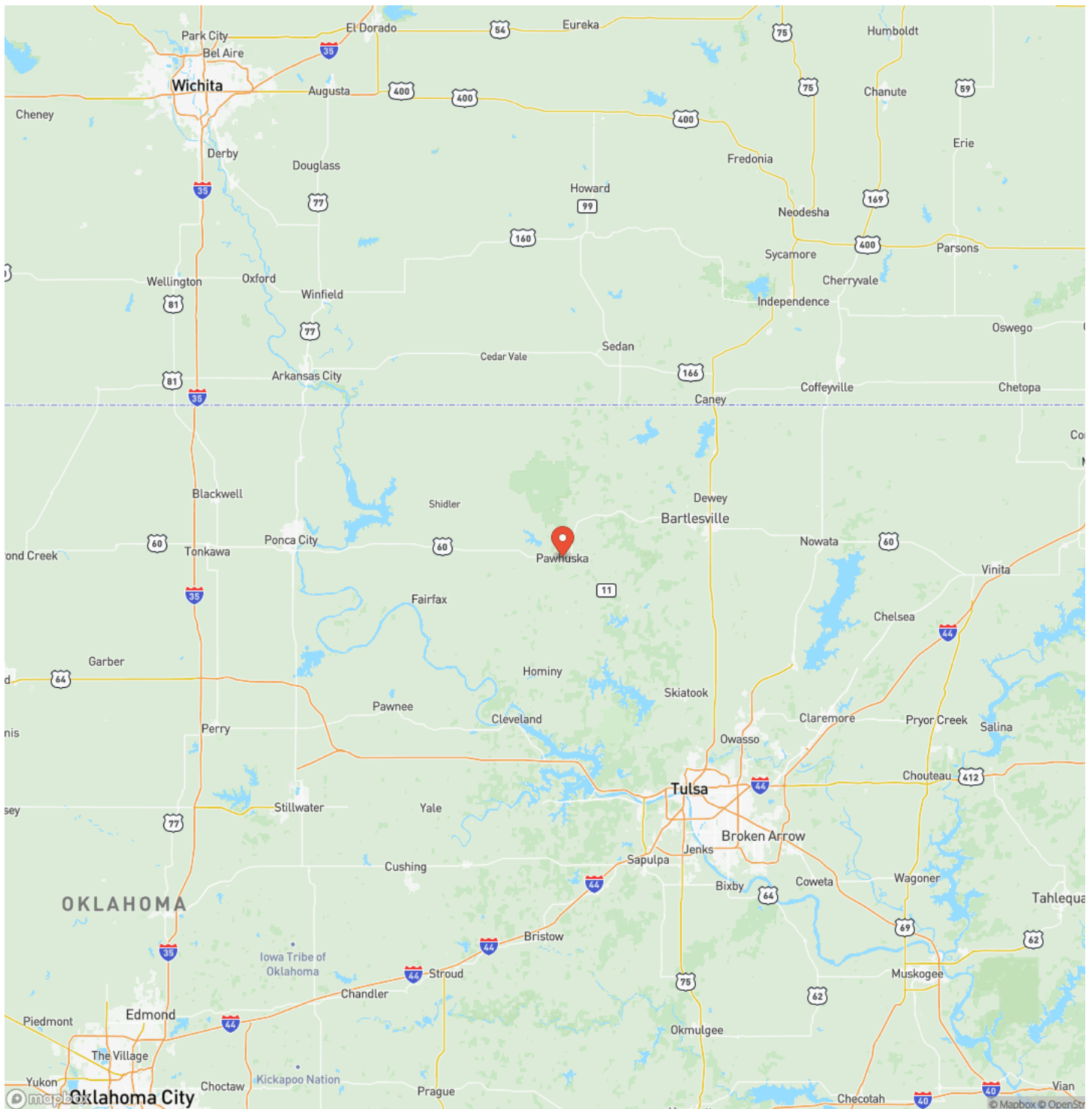
Hulah Lake Getaway
Pawhuska, OK / Osage County



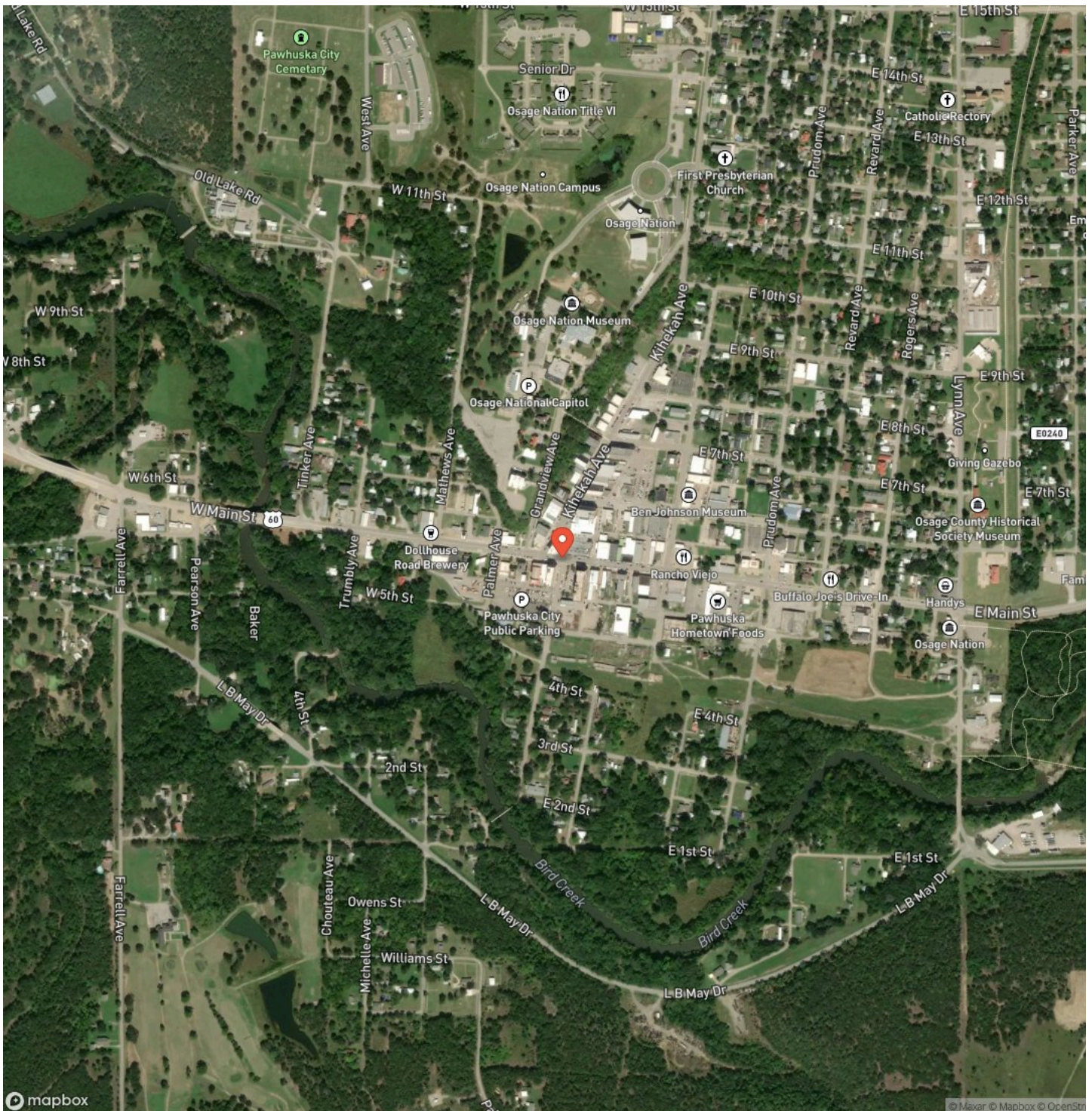
Locator Map



Locator Map



Satellite Map



LISTING REPRESENTATIVE

For more information contact:



Representative

Kim Wilhelms

Mobile

(918) 601-0922

Email

kwilhelms@l2realtyinc.com

Address

City / State / Zip

NOTES

[illegible]

This image shows a full page of blank white paper with horizontal ruling lines. The lines are evenly spaced and run across the width of the page, providing a template for writing or drawing. There are no margins, text, or other markings present.



L2realtyinc.com

DISCLAIMERS

Information in this brochure is provided solely for information purposes and does not constitute an offer to sell or advertise real estate outside the states in which broker or agent licensed. The information presented has been obtained from sources deemed to be reliable, but is not guaranteed or warranted by the agent, broker, or the sellers of these properties. This offering is subject to errors, omissions, prior sale, price change, correction or withdrawal from the market without notice. All references to age, square footage, income, expenses, acreage, carrying capacity, and land classification, etc. are approximate. Prospective buyers are chargeable with and expected to conduct their own independent investigation of the information and the property and to rely only on those results. Sellers reserve the right to accept or reject any and all offers without liability to any buyer or cooperating broker.

Maps are provided for illustration purposes only, the accuracy is not warranted. Parcels on interactive maps are not adjusted to match aerial backgrounds. This information is for reference purposes only and is not a legal document. Data maps contain errors. The seller and seller's agent are making known to all potential buyers that there may be variations between the location of the existing fence lines and the legal description of the deeded property. Seller and seller's agent make no warranties with regard to the location of the fence lines in relationship to the deeded property lines, nor does the Seller make any warranties or representations with regard to the specific acreage contained within the fenced property lines. Seller is selling the property in an "as is" condition, which includes the location of the fences as they exist. Boundaries shown on the accompanying maps are approximate, based on county parcel data. The maps are not to scale. The accuracy of the maps is not guaranteed. Prospective buyers are encouraged to verify fence lines, deeded property lines and acreages using a licensed surveyor at their own expense.



L2 Realty, Inc - Land and Lifestyle Properties
4045B CR 3900
Independence, KS 67301
(620) 577-4487
L2realtyinc.com

