

Bucks 17-2
0 Juniper Bay Rd
Conway, SC 29527

\$1,027,158
171.190± Acres
Horry County



Bucks 17-2
Conway, SC / Horry County

SUMMARY

Address

0 Juniper Bay Rd

City, State Zip

Conway, SC 29527

County

Horry County

Type

Timberland, Hunting Land, Recreational Land, Undeveloped Land, Farms

Latitude / Longitude

33.866382 / -79.164679

Acreage

171.190

Price

\$1,027,158

Property Website

<https://www.mossoakproperties.com/property/bucks-17-2-horry-south-carolina/106407/>



MORE INFO ONLINE:

<https://www.mossoakproperties.com/office/mossoak-properties-rural-land-investments/>

PROPERTY DESCRIPTION

Bucks 17-2 Tract: 171.19 +/- Acres Near Conway

Welcome to the Bucks 17-2 tract. This very large and beautiful property sits just northwest of Conway. It offers gentle topography and a great system of interior roads. If you want a hunting camp, recreational retreat, horse trails, a timber investment, a cattle pasture, or a quiet country home near town, this large property can do it all.

Property Highlights

- **Excellent Terrain:** The ground is mostly flat with gentle slopes. This makes the land very easy to walk, drive across, or build your dream home on.
- **Simple Access:** A sturdy gravel road leads into the property from the west off Juniper Bay Road. Once inside, an excellent trail network allows you to travel across the acreage with ease.
- **Flexible Choices:** The acreage is covered in mature pine trees along with sections of younger growth. You can easily clear parts of it for livestock pasture or design it for outdoor fun.

Hunting

This acreage is the perfect setup for a ready to use hunting property.

- **Ideal Cover:** The blend of neighboring ag fields, thick brush and tall pine trees gives local wildlife the perfect habitat.
- **Wetlands:** About 33 acres of the property on the north side, consists of wetlands, with much of it being swamp. This wet area creates incredible opportunities for waterfowl hunting and hunting big swamp bucks.
- **Plenty of Game:** Deer, turkey, and small game animals frequent this area because of the great habitat and the neighboring farm fields.
- **Room for Food Plots:** With over 171 acres, you have tons of space to plant food plots and attract more wildlife.

Timber

Bucks 17-1 is not just for recreation. It is also an efficient timber investment.

- **Valuable Wood:** A large portion of the land is covered in mature pine plantations, making it a very efficient timber tract.
- **Simple Logging:** The great trail system, flat ground, and quick access to major highways make it easy to harvest the wood and haul it to local markets.

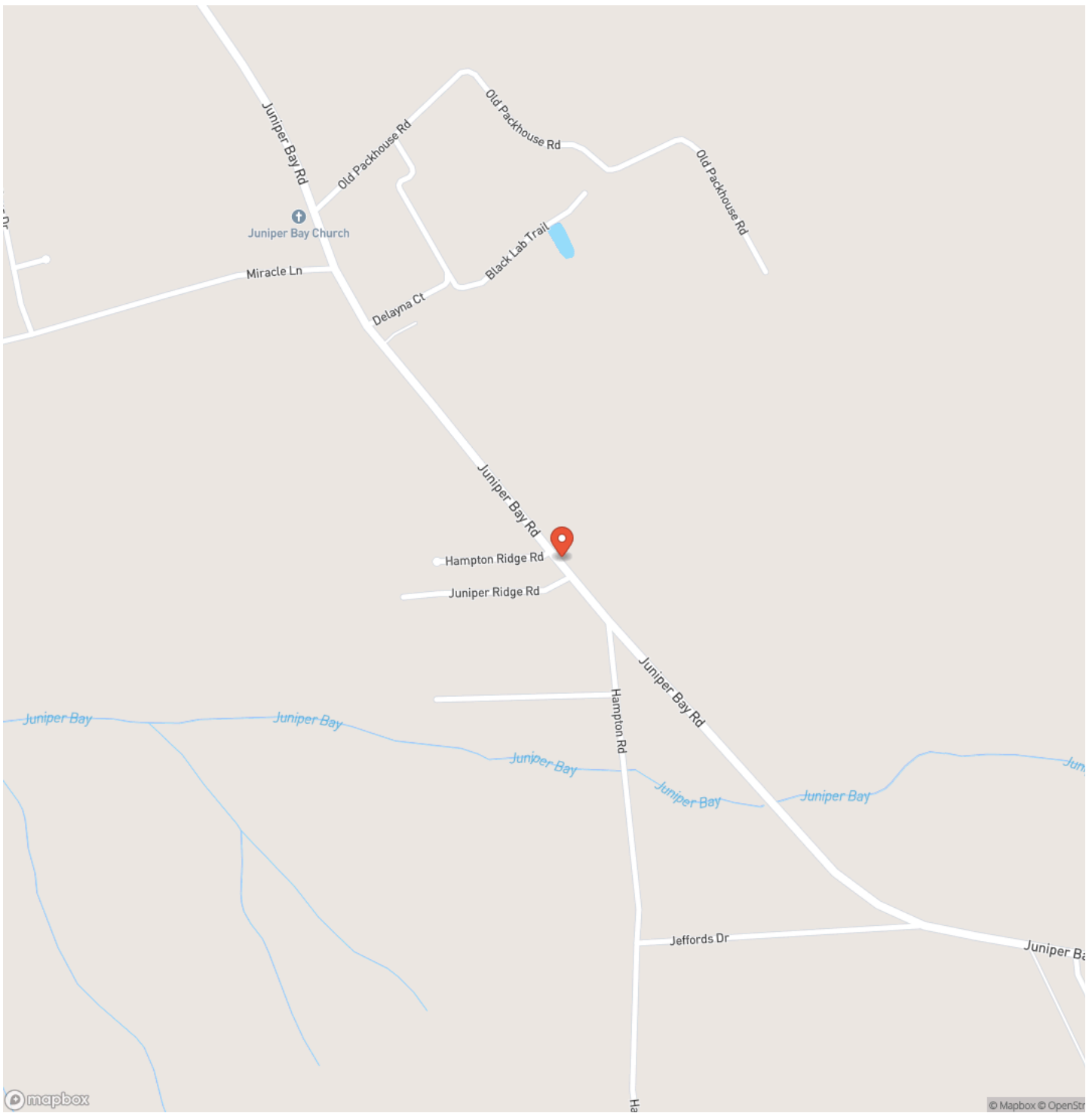
MORE INFO ONLINE:

<https://www.mossyoakproperties.com/office/mossy-oak-properties-rural-land-investments/>

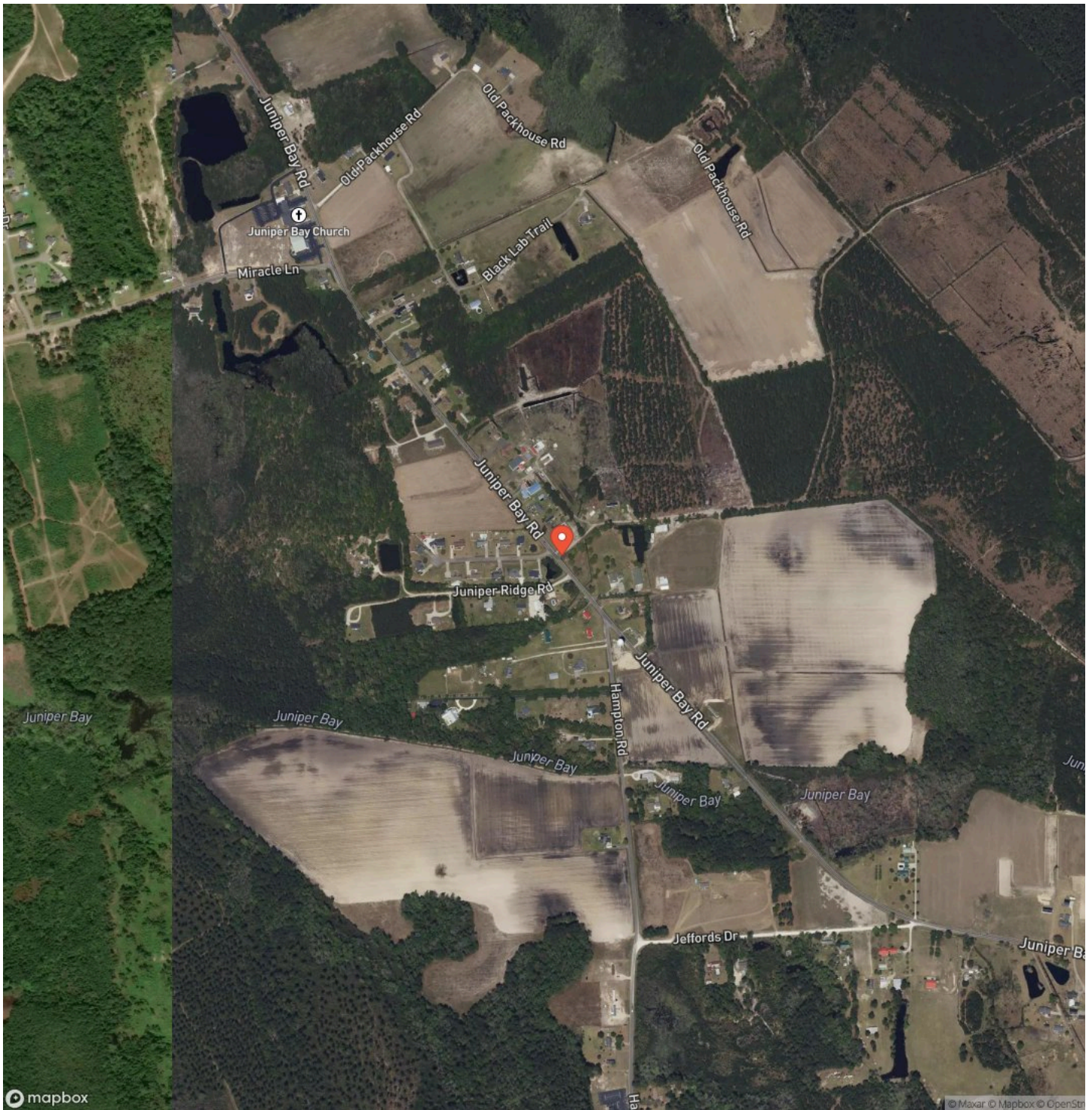
Bucks 17-2
Conway, SC / Horry County



Locator Map



Satellite Map



MORE INFO ONLINE:

<https://www.mossyoakproperties.com/office/mossy-oak-properties-rural-land-investments/>

DISCLAIMERS

"Property inspections shall be done during daylight hours. Seller and Rural Land Investments in no way make any representations or warranties regarding the conditions of the property, including any and all access routes, and all persons entering upon the property do so at their own risk and accept said property "as-is" in its existing condition during such inspections. All persons entering upon the property assume all risks and liabilities and agree to indemnify, defend, and hold harmless Seller, its affiliates, officers, directors, managers, agents, representatives, and employees from and against any and all claims, demands, causes of action, injuries (including death) and damages resulting from any accident, incident, or occurrence arising out of, incidental to or in any way resulting from his or her inspection of the property or his or her exposure to the conditions of the property."

Mossy Oak Properties Milliken Advisors Realty Group

245 Stoneridge Drive

Columbia, SC 29210

(803) 722-1124

<https://www.mossoakproperties.com/office/mossy-oak-properties-rural-land-investments/>
