

**Bucks 17-1**  
000 Juniper Bay Rd  
Conway, SC 29527

**\$550,229**  
84.65± Acres  
Horry County



**Bucks 17-1**  
**Conway, SC / Horry County**

---

**SUMMARY**

**Address**

000 Juniper Bay Rd

**City, State Zip**

Conway, SC 29527

**County**

Horry County

**Type**

Farms, Hunting Land, Recreational Land, Timberland, Horse Property, Undeveloped Land, Ranches

**Latitude / Longitude**

33.866406 / -79.164706

**Acreage**

84.65

**Price**

\$550,229

**Property Website**

<https://www.mossoakproperties.com/property/bucks-17-1/horry/south-carolina/106768/>



## Bucks 17-1 Conway, SC / Horry County

---

### PROPERTY DESCRIPTION

#### **Bucks 17-1 Tract: 84.65 +/- Acres Near Conway**

Welcome to the Bucks 17-1 tract! This beautiful property is located just northwest of Conway. It features gentle topography and a fantastic system of internal roads. You can easily access the property from the south side using a high-quality gravel road off Juniper Bay Road. Whether you're looking for a hunting camp, timber investment, to convert to pasture, or create a peaceful rural home close to town, this property has potential for it all.

#### **Key Features & Land Highlights**

- **Great Layout:** The land is mostly flat with gentle slopes, making it easy to walk, drive, or build on.
- **Easy Access:** A well-maintained gravel road goes into the property from the south side off of Juniper Bay Road. Inside, a top-notch network of trails makes it easy to get around.
- **Versatile Land Use:** The property is filled with mature pine trees and areas of young growth. It can be converted to pasture or set up for outdoor recreation.

#### **Hunting**

This tract is perfect for creating a turnkey hunting property.

- **Great Habitat:** The mix of thick underbrush and mature pine trees offers excellent cover for wildlife.
- **Abundant Wildlife:** Whitetail deer, turkey, and small game are attracted to the area, drawn by the neighboring farm fields and excellent habitat on the property.
- **Food Plots:** There is plenty of space to plant food plots.

#### **Timber Investment**

Bucks 17-1 is not just for fun, it is also a working timber investment.

- **Ready-to-Harvest Wood:** Because most of the property consists of mature pine plantations, it is a highly efficient timber investment.
- **Easy Logging Setup:** The great internal roads, flat land, and close proximity to major highways make it very easy to harvest and transport the timber to market.

**MORE INFO ONLINE:**

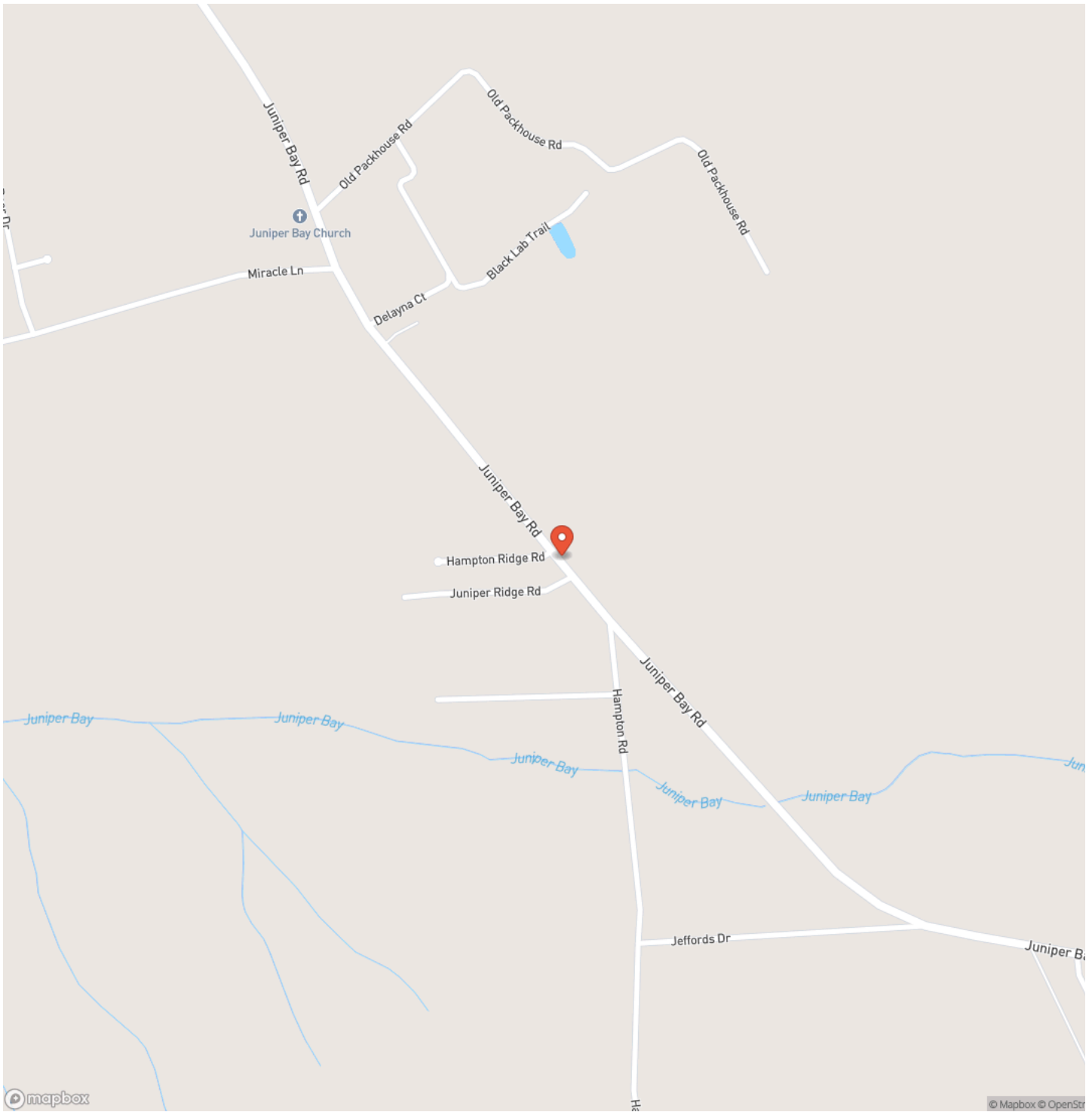
<https://www.mossyoakproperties.com/office/mossy-oak-properties-rural-land-investments/>

**Bucks 17-1**  
**Conway, SC / Horry County**

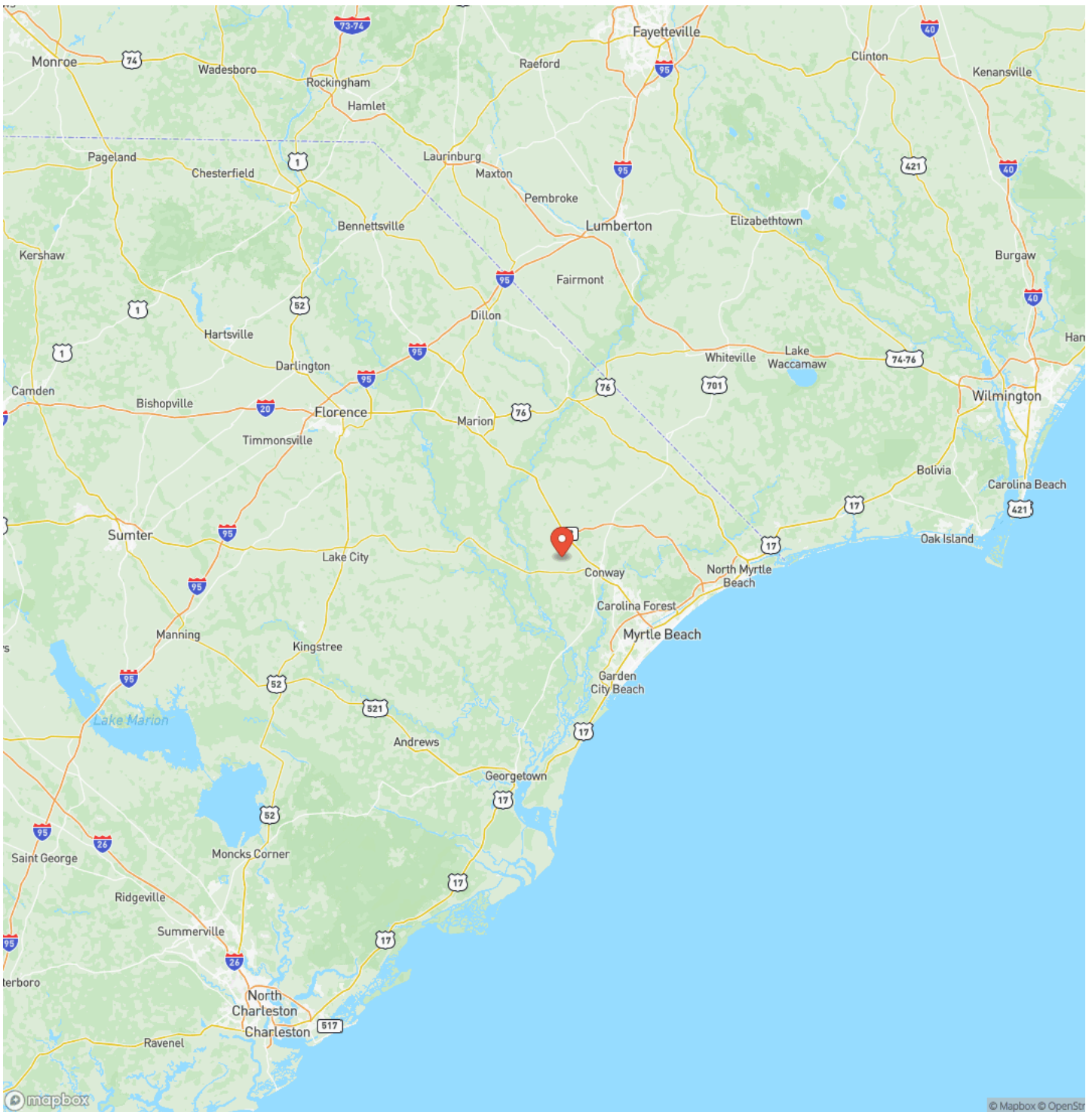
---



# Locator Map



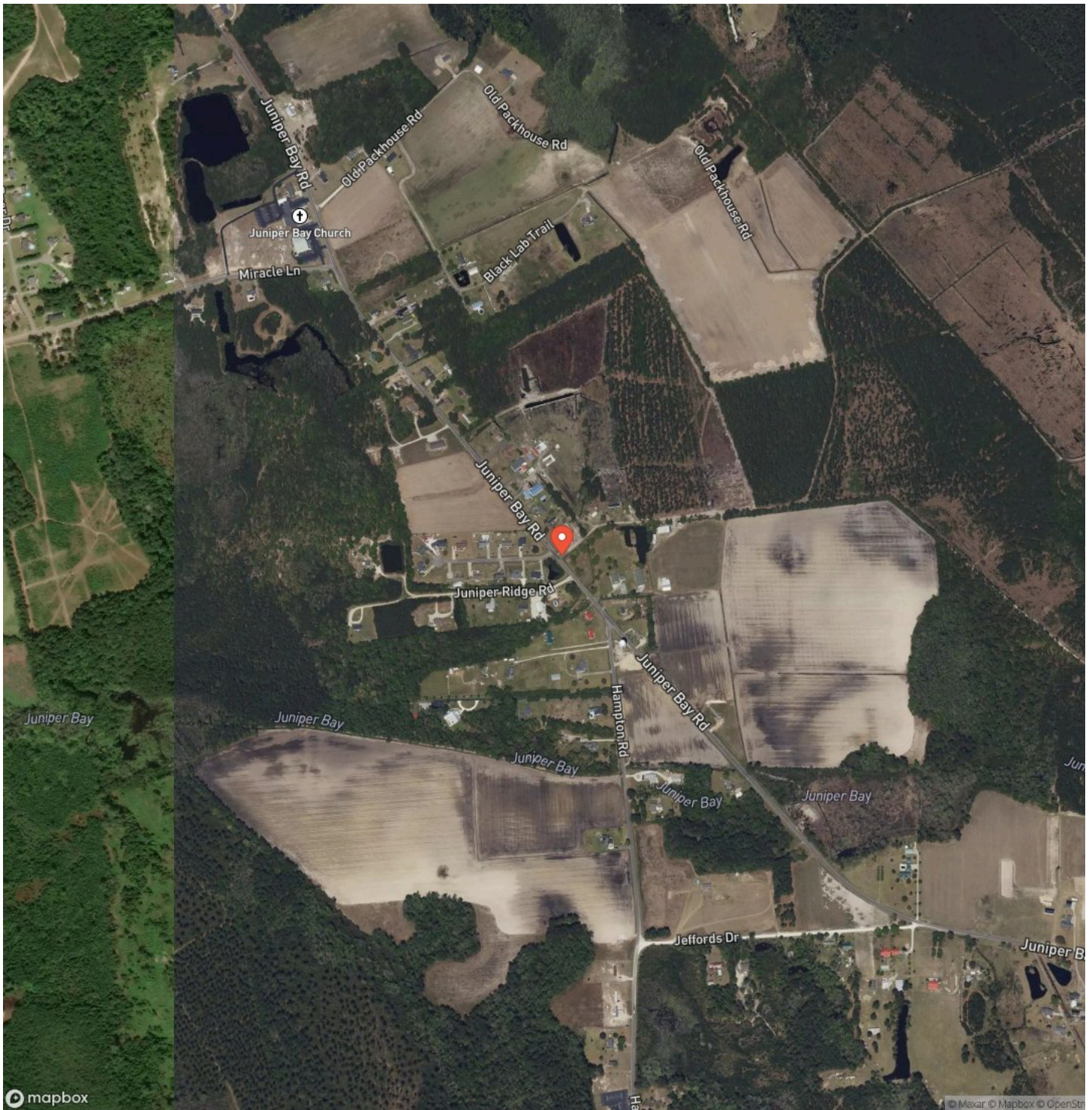
# Locator Map



**MORE INFO ONLINE:**

<https://www.mossyoakproperties.com/office/mossy-oak-properties-rural-land-investments/>

## Satellite Map



**MORE INFO ONLINE:**

<https://www.mossyoakproperties.com/office/mossy-oak-properties-rural-land-investments/>





## **DISCLAIMERS**

*"Property inspections shall be done during daylight hours. Seller and Rural Land Investments in no way make any representations or warranties regarding the conditions of the property, including any and all access routes, and all persons entering upon the property do so at their own risk and accept said property "as-is" in its existing condition during such inspections. All persons entering upon the property assume all risks and liabilities and agree to indemnify, defend, and hold harmless Seller, its affiliates, officers, directors, managers, agents, representatives, and employees from and against any and all claims, demands, causes of action, injuries (including death) and damages resulting from any accident, incident, or occurrence arising out of, incidental to or in any way resulting from his or her inspection of the property or his or her exposure to the conditions of the property."*

---

**Mossy Oak Properties Milliken Advisors Realty Group**

245 Stoneridge Drive

Columbia, SC 29210

(803) 722-1124

<https://www.mossoakproperties.com/office/mossy-oak-properties-rural-land-investments/>

---