

Mountain Living on Private 20-acre Retreat Atop Paris Mountain
1252 Paris Mountain Rd
Rockmart, GA 30153

\$624,900
20± Acres
Polk County



Mountain Living on Private 20-acre Retreat Atop Paris Mountain Rockmart, GA / Polk County

SUMMARY

Address

1252 Paris Mountain Rd

City, State Zip

Rockmart, GA 30153

County

Polk County

Type

Residential Property, Single Family, Recreational Land, Hunting Land

Latitude / Longitude

33.948483 / -85.082438

Taxes (Annually)

2441

Dwelling Square Feet

1390

Bedrooms / Bathrooms

2 / 1

Acreage

20

Price

\$624,900

Property Website

<https://www.garrettlandcompany.com/property/mountain-living-on-private-20-acre-retreat-atop-paris-mountain-polk-georgia/94695/>



Mountain Living on Private 20-acre Retreat Atop Paris Mountain Rockmart, GA / Polk County

PROPERTY DESCRIPTION

Discover true mountain living on this private 20-acre retreat atop Paris Mountain.

This charming 2-bedroom, 1-bathroom cabin offers 1,390 sq. ft. of warm, inviting space with vinyl plank floors, wood walls, and wood ceilings accented by exposed wood beams, creating an authentic rustic atmosphere throughout.

The kitchen features natural wood cabinets, granite countertops, and stainless steel appliances, blending mountain character with modern convenience. The cozy living room includes a wood-burning stove and a large bay window that fills the space with natural light and captures beautiful mountain views.

The main level master bedroom offers a large walk-in closet that conveniently houses the laundry room. The beautifully finished bathroom includes a double vanity, clawfoot soaking tub, and a tile walk-in shower. Upstairs, the second bedroom provides a private, comfortable space for guests or family.

A standout feature of this home is the expansive wraparound front porch, offering plenty of room to relax, socialize, and enjoy peaceful evenings. With porch swings and sweeping vistas, it's the perfect spot to take in stunning sunsets over the mountains.

The property's 20 acres include a beautiful mixture of hardwoods and pines, creating a thriving habitat for wildlife. Deer and turkey are frequently seen on the land, and the property offers excellent hunting opportunities. A wet-weather creek runs through the acreage, adding charm, character, and natural beauty. There are also multiple potential homesites, ideal for those envisioning a family compound or additional cabins.

Additional highlights include a gravel driveway, a private well housed in its own well house, and a large storage building for equipment or hobbies. A significant bonus is the 625 sq. ft. guesthouse/office space, perfect for visitors, remote work, or creative use. The home also features a brand-new HVAC unit installed in the Summer of 2025 for year-round comfort.

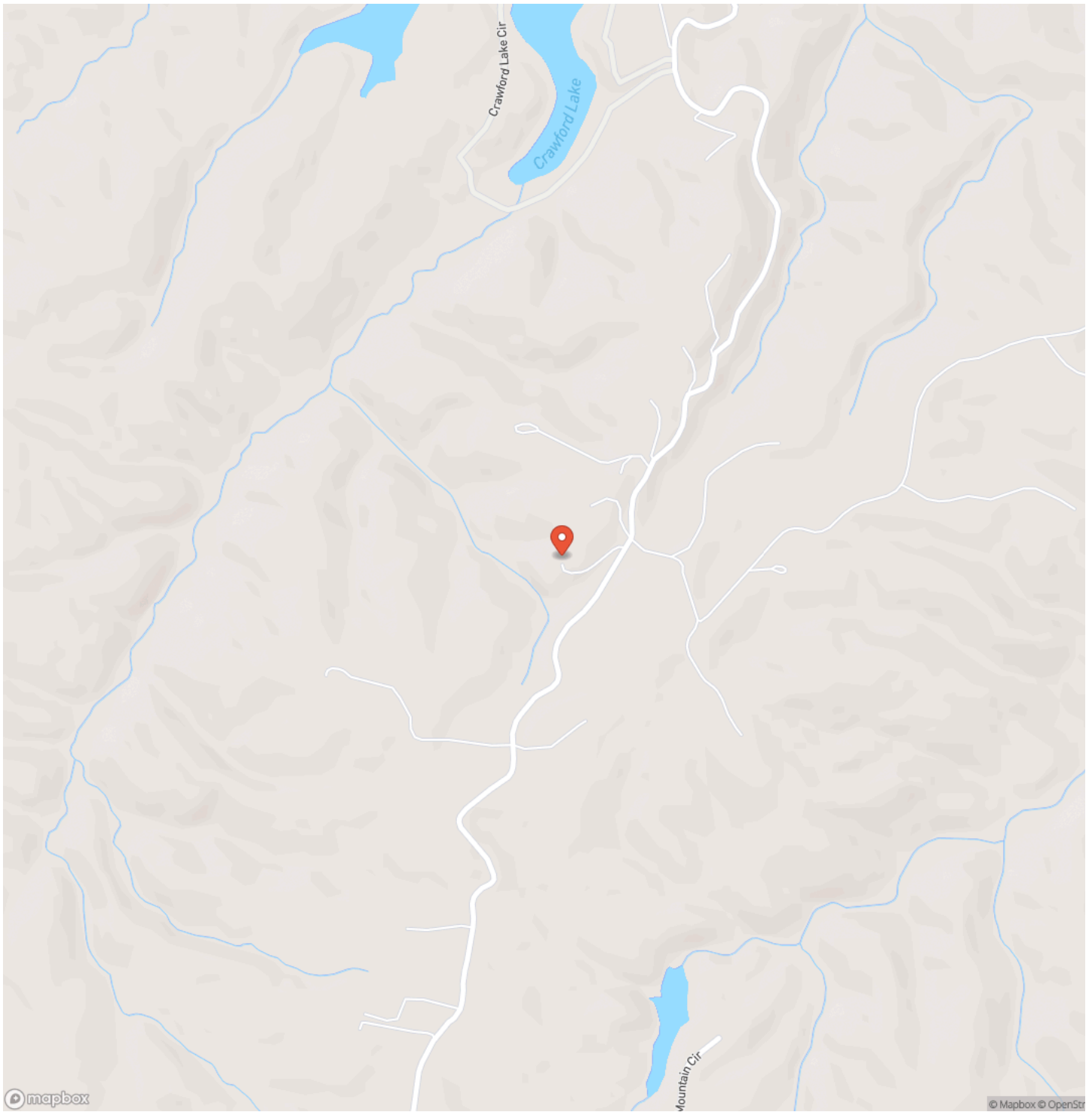
Offering unmatched privacy, natural beauty, and true mountain charm, this property delivers the ultimate mountain lifestyle—quiet, scenic, and truly one of a kind.



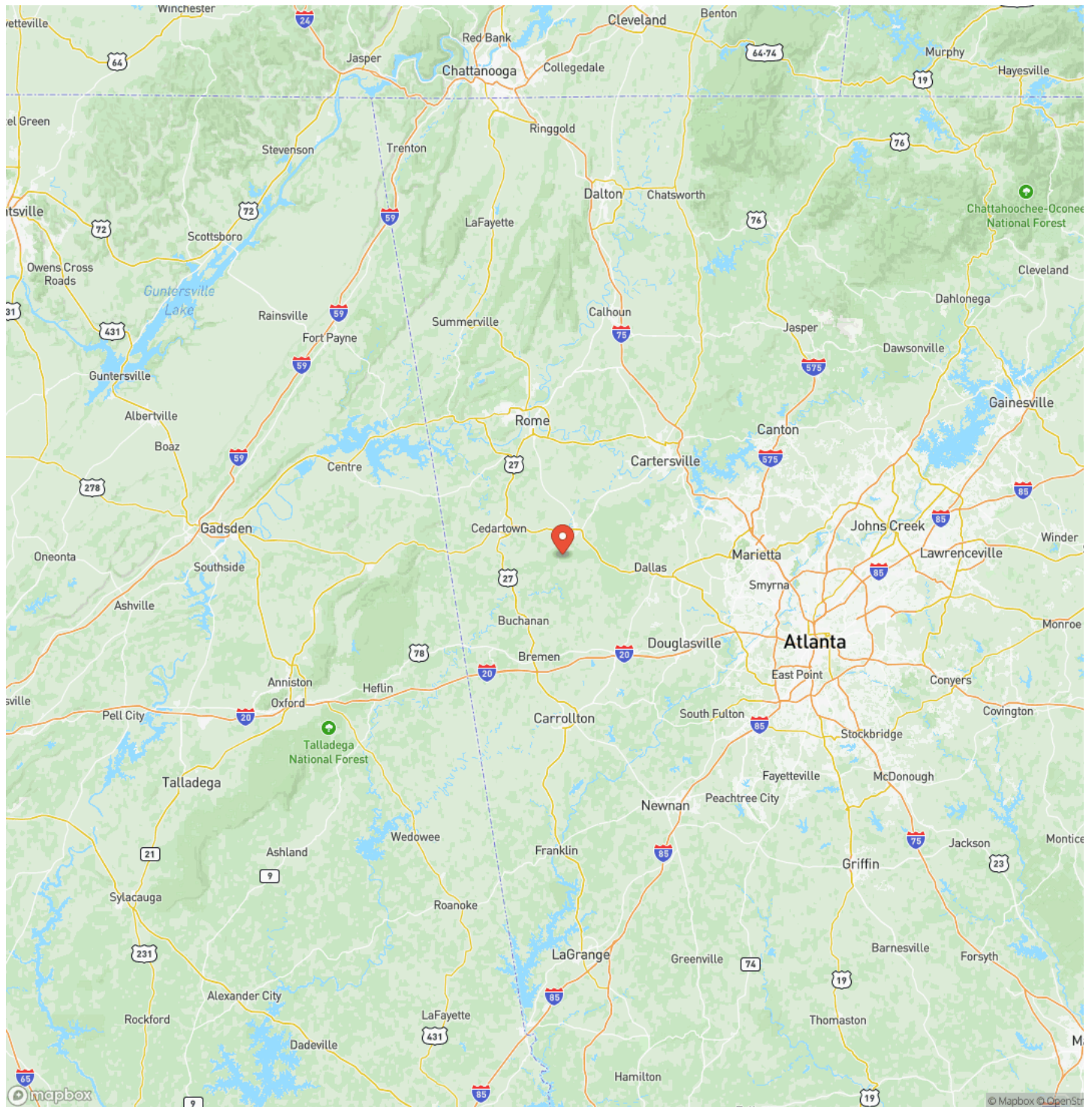
Mountain Living on Private 20-acre Retreat Atop Paris Mountain
Rockmart, GA / Polk County



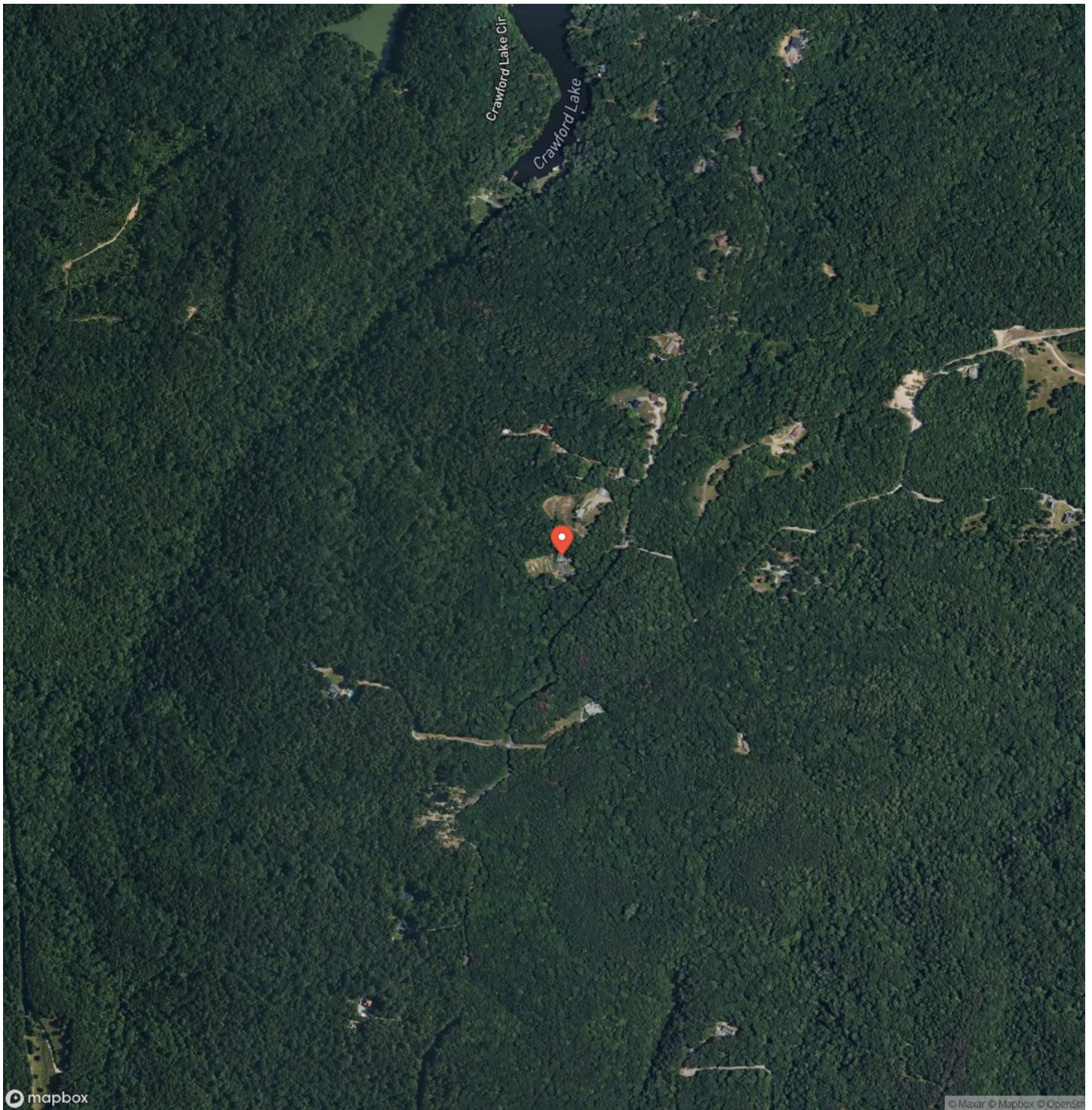
Locator Map



Locator Map



Satellite Map



DISCLAIMERS

Information in this brochure is provided solely for information purposes and does not constitute an offer to sell or advertise real estate outside the states in which broker or agent licensed. The information presented has been obtained from sources deemed to be reliable, but is not guaranteed or warranted by the agent, broker, or the sellers of these properties. This offering is subject to errors, omissions, prior sale, price change, correction or withdrawal from the market without notice. All references to age, square footage, income, expenses, acreage, carrying capacity, and land classification, etc. are approximate. Prospective buyers are chargeable with and expected to conduct their own independent investigation of the information and the property and to rely only on those results. Sellers reserve the right to accept or reject any and all offers without liability to any buyer or cooperating broker.

Maps are provided for illustration purposes only, the accuracy is not warranted. Parcels on interactive maps are not adjusted to match aerial backgrounds. This information is for reference purposes only and is not a legal document. Data maps contain errors. The seller and seller's agent are making known to all potential buyers that there may be variations between the location of the existing fence lines and the legal description of the deeded property. Seller and seller's agent make no warranties with regard to the location of the fence lines in relationship to the deeded property lines, nor does the Seller make any warranties or representations with regard to the specific acreage contained within the fenced property lines. Seller is selling the property in an "as is" condition, which includes the location of the fences as they exist. Boundaries shown on the accompanying maps are approximate, based on county parcel data. The maps are not to scale. The accuracy of the maps is not guaranteed. Prospective buyers are encouraged to verify fence lines, deeded property lines and acreages using a licensed surveyor at their own expense.



Garrett Land Company
119 Felton Dr
Rockmart, GA 30153
(678) 628-3301
<https://www.garrettlandcompany.com/>

