

Jerry Loop at Saline
Jerry Loop @ Hwy 155
Saline, LA 71070

\$869,500
185± Acres
Bienville County



Jerry Loop at Saline
Saline, LA / Bienville County

SUMMARY

Address

Jerry Loop @ Hwy 155

City, State Zip

Saline, LA 71070

County

Bienville County

Type

Hunting Land, Recreational Land, Single Family

Latitude / Longitude

32.183501 / -92.945357

Dwelling Square Feet

1,100

Bedrooms / Bathrooms

2 / 1

Acreage

185

Price

\$869,500

Property Website

<https://www.mossoakpropertiesla.com/property/jerry-loop-at-saline/bienville/louisiana/103826/>



Jerry Loop at Saline
Saline, LA / Bienville County

PROPERTY DESCRIPTION

185± Acres | Hunting Retreat + Home, Pond & 2,700' Blacktop Frontage
Jerry Loop Rd | Saline, LA | Bienville Parish

Income-capable, and ready to enjoy-this 185± acre tract in Bienville Parish checks every box for hunters, investors, and buyers seeking a private rural escape.

This property features a proven mix of mature hardwoods and pine timber, a live creek, and a scenic pond-creating ideal habitat for whitetail deer, wild turkey, and small game. Established food plots and a well-maintained internal trail system make this a hunt-ready property from day one.

Overlooking the pond is a 2BR/1BA home, perfectly positioned for a weekend getaway or hunting camp. The pond offers strong fishing potential with room to add a dock or pier.

With approximately 2,700 feet of blacktop road frontage, this tract also offers exceptional development upside. The layout supports subdivision into large-acre homesites, a family compound, or long-term investment hold.

Hard-to-find combination of improvements, access, and habitat-ready to hunt, fish, and enjoy immediately.

Key Features:

- 185± acres in Saline, LA (Bienville Parish)
- Turnkey hunting property - deer & turkey
- Mature hardwoods + pine timber
- Live creek, scenic pond (fishing potential)
- 2BR / 1BA home overlooking pond
- Established food plots & trail system
- ~2,700' blacktop road frontage
- Strong development / subdivision potential
- Easy access - immediate use

Listing Agent - Will Giddings - 318.464.2034



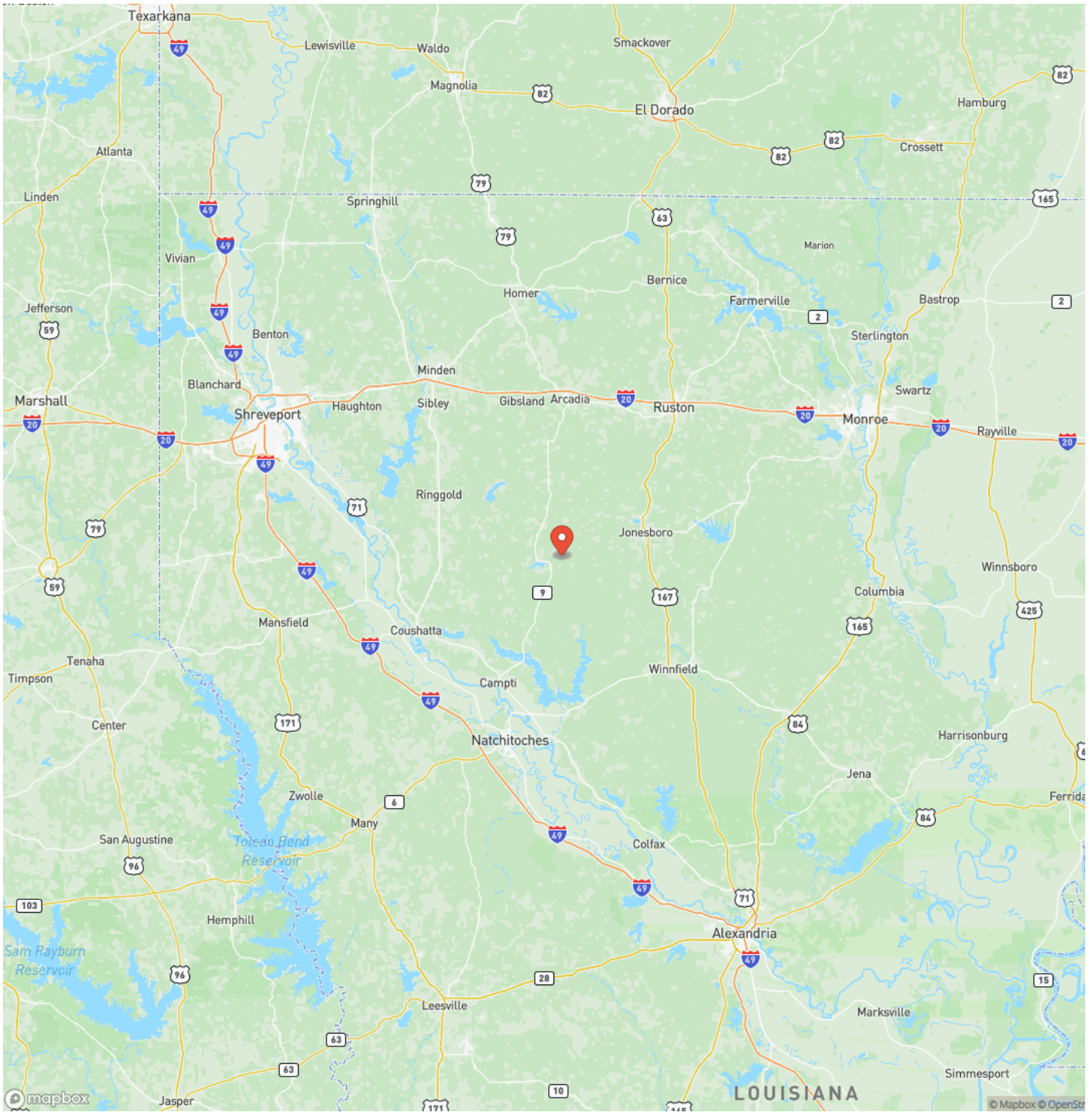
Jerry Loop at Saline
Saline, LA / Bienville County



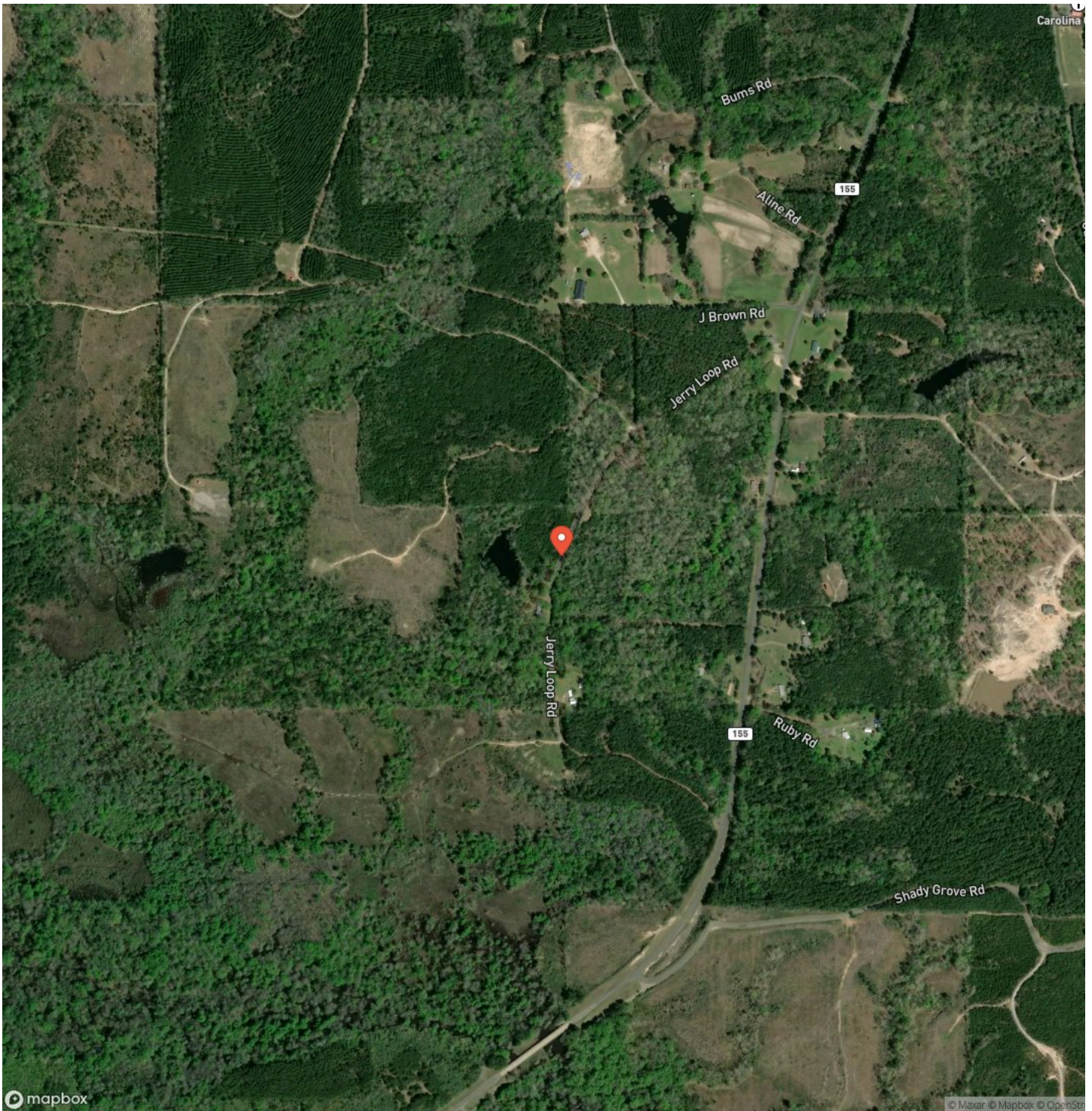
Locator Map



Locator Map



Satellite Map



Jerry Loop at Saline
Saline, LA / Bienville County

LISTING REPRESENTATIVE
For more information contact:



Representative

Will Giddings

Mobile

(318) 464-2034

Office

(318) 795-2490

Email

wgiddings@mossyoakproperties.com

Address

2412 E 70th Street

City / State / Zip

Shreveport, LA 71105

NOTES



NOTES



MORE INFO ONLINE:

<https://www.mossyoakpropertiesla.com/>

DISCLAIMERS

Information in this brochure is provided solely for information purposes and does not constitute an offer to sell or advertise real estate outside the states in which broker or agent licensed. The information presented has been obtained from sources deemed to be reliable, but is not guaranteed or warranted by the agent, broker, or the sellers of these properties. This offering is subject to errors, omissions, prior sale, price change, correction or withdrawal from the market without notice. All references to age, square footage, income, expenses, acreage, carrying capacity, and land classification, etc. are approximate. Prospective buyers are chargeable with and expected to conduct their own independent investigation of the information and the property and to rely only on those results. Sellers reserve the right to accept or reject any and all offers without liability to any buyer or cooperating broker.

Maps are provided for illustration purposes only, the accuracy is not warranted. Parcels on interactive maps are not adjusted to match aerial backgrounds. This information is for reference purposes only and is not a legal document. Data maps contain errors. The seller and seller's agent are making known to all potential buyers that there may be variations between the location of the existing fence lines and the legal description of the deeded property. Seller and seller's agent make no warranties with regard to the location of the fence lines in relationship to the deeded property lines, nor does the Seller make any warranties or representations with regard to the specific acreage contained within the fenced property lines. Seller is selling the property in an "as is" condition, which includes the location of the fences as they exist. Boundaries shown on the accompanying maps are approximate, based on county parcel data. The maps are not to scale. The accuracy of the maps is not guaranteed. Prospective buyers are encouraged to verify fence lines, deeded property lines and acreages using a licensed surveyor at their own expense.



Mossy Oak Properties of Louisiana
2412 E 70th Street
Shreveport, LA 71105
(318) 795-2490
<https://www.mossyoakpropertiesla.com/>

