

CITY FARM 60
0 S Locust Street
Denmark, SC 29042

\$237,000
60± Acres
Bamberg County



CITY FARM 60
Denmark, SC / Bamberg County

SUMMARY

Address

0 S Locust Street

City, State Zip

Denmark, SC 29042

County

Bamberg County

Type

Hunting Land, Recreational Land, Timberland, Undeveloped Land, Farms

Latitude / Longitude

33.3078 / -81.15349

Acreage

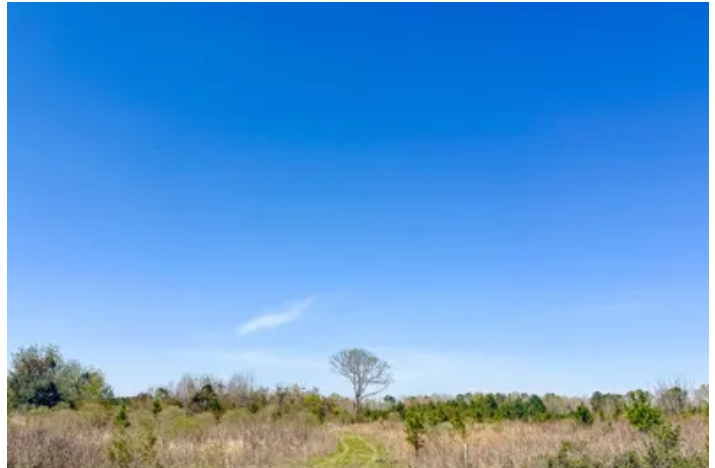
60

Price

\$237,000

Property Website

<https://compasslandpartners.com/property/city-farm-60-/bamberg/south-carolina/101698/>



CITY FARM 60

Denmark, SC / Bamberg County

PROPERTY DESCRIPTION

Discover the expansive possibilities of City Farm 60, a remarkable 60-acre estate nestled in the serene landscapes of Denmark, South Carolina. This versatile property offers a blend of natural beauty and potential, perfect for those dreaming of a private hunting retreat, a thriving timber operation, or a future farm. With its diverse terrain and abundant wildlife, this land is a canvas awaiting your vision, promising a lifestyle rich in outdoor adventure and tranquility.

Location

Situated in the charming city of Denmark within Bamberg County, this property offers a peaceful rural setting with convenient access to local amenities and community resources. The area is renowned for natural beauty and a welcoming atmosphere, providing an ideal backdrop for both recreational pursuits and agricultural endeavors.

Land and Terrain

This impressive 60-acre parcel presents a rich tapestry of landscapes, ranging from brush and cleared areas to partially wooded and fully wooded sections, along with land in its natural state. The varied terrain is perfectly suited for a multitude of uses. Whether you envision open fields for cultivation or dense woodlands for timber harvesting and wildlife habitats, the land invites creative development.

Improvements and Infrastructure

The property is a blank slate, offering the freedom to design and implement improvements tailored precisely to your needs and desires. Buyers have the unique opportunity build structures according to their personal vision, whether that includes a rustic hunting cabin, a custom farm residence, or essential agricultural facilities. The absence of existing structures allows for complete creative control and the freedom to develop the infrastructure that best supports your plans.

Water Features

The property boasts a natural creek meandering through the landscape, providing a valuable natural resource and enhancing the scenic beauty.

Wildlife and Vegetation

City Farm 60 is a haven for a diverse array of wildlife, making it an exceptional destination for nature enthusiasts and hunters alike. The land supports populations of dove, ducks, geese, small game, turkey, and whitetail deer, promising rich hunting opportunities. The varied vegetation, including brush, cleared land, and both partially and fully wooded areas, provides ideal habitats for these species and contributes to the property's natural charm.

Current and Potential Use

Currently utilized for agricultural purposes and timber production, this property holds immense potential for future development. The versatile nature makes it suitable for a variety of possible uses, including a dynamic mixed-use development. Whether your interest lies in expanding agricultural operations, continuing sustainable timber harvesting, or creating a unique recreational retreat with ATV and bike trails, this land offers the flexibility to do it all.

Access and Easements

Access to City Farm 60 is conveniently provided by both city street and county road frontage, ensuring ease of entry and exit. The property features a dirt road type, maintaining its rustic charm while offering practical access. The clear and defined access points facilitate development and enjoyment of the land, whether for personal use or commercial ventures.

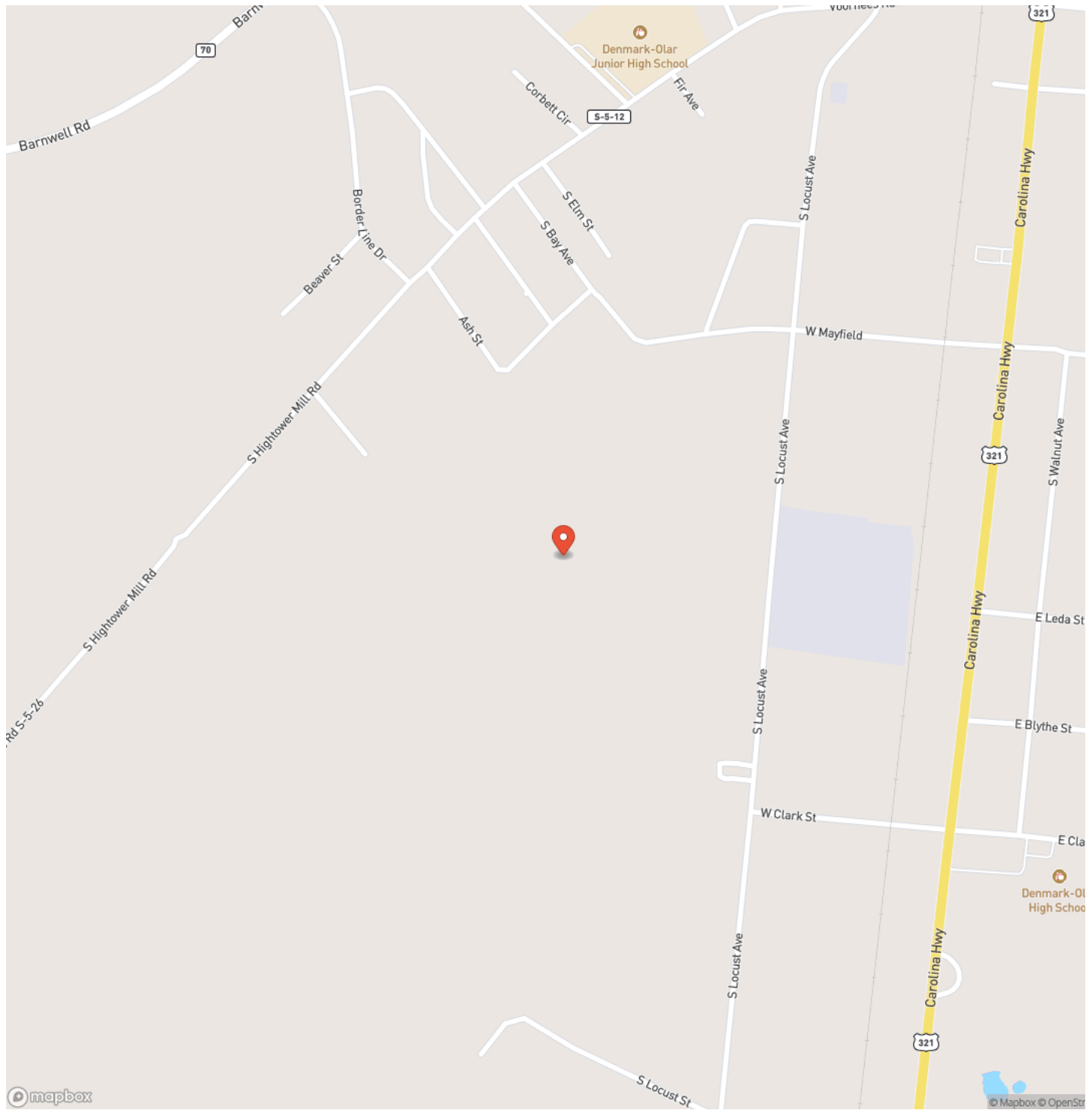
Contact us today to learn more or to schedule a visit.



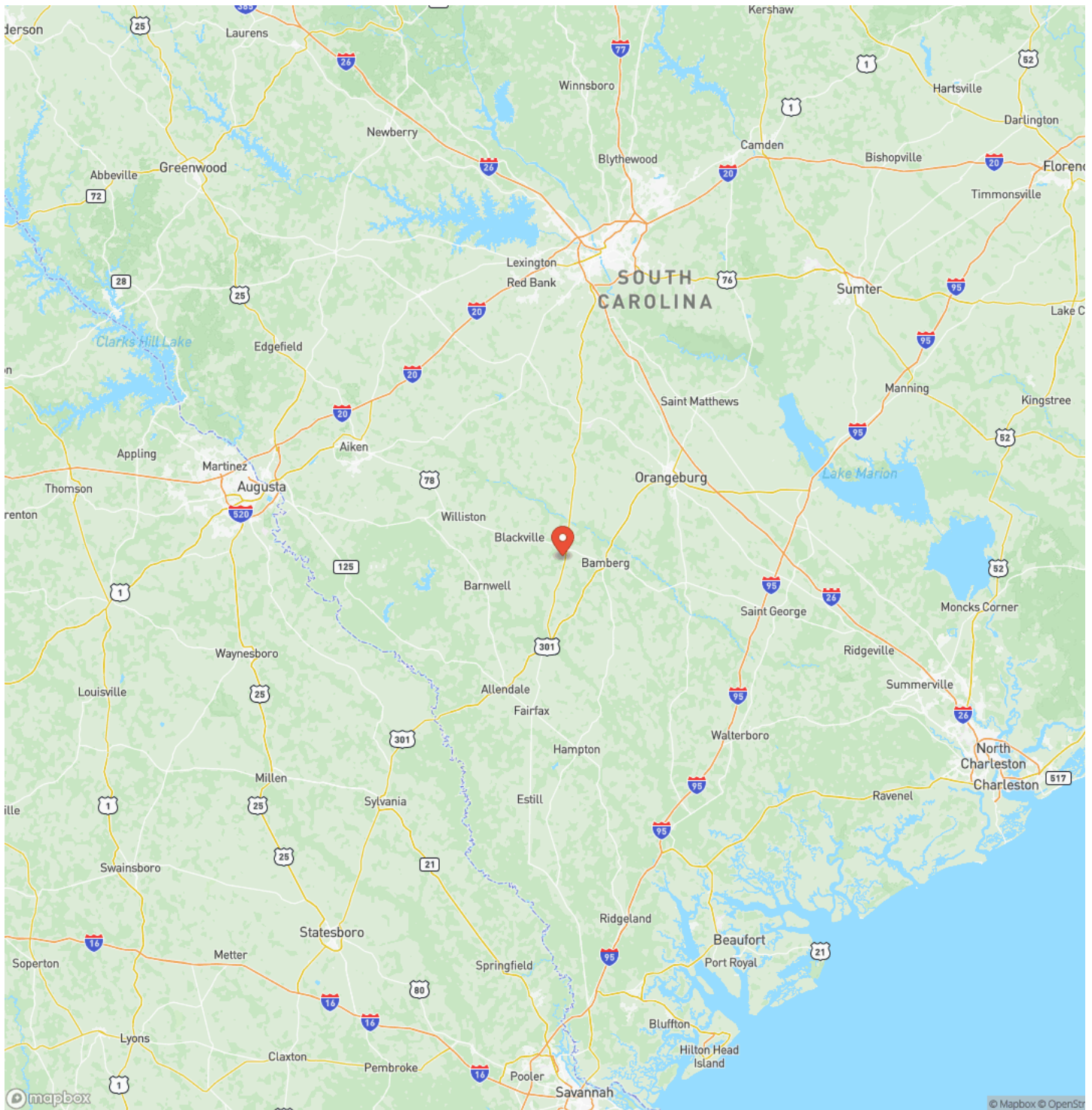
CITY FARM 60
Denmark, SC / Bamberg County



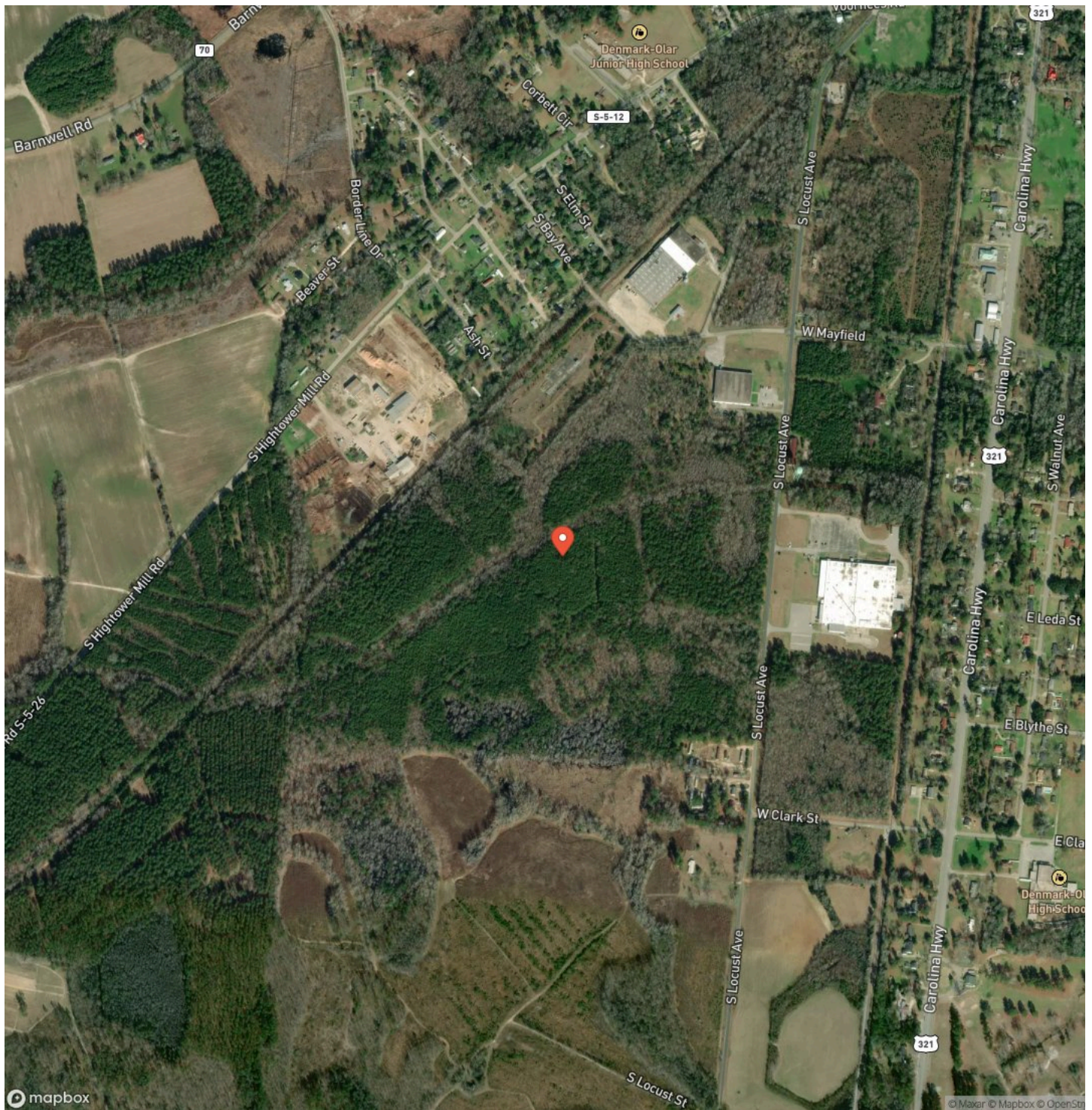
Locator Map



Locator Map



Satellite Map



DISCLAIMERS

Information in this brochure is provided solely for information purposes and does not constitute an offer to sell or advertise real estate outside the states in which broker or agent licensed. The information presented has been obtained from sources deemed to be reliable, but is not guaranteed or warranted by the agent, broker, or the sellers of these properties. This offering is subject to errors, omissions, prior sale, price change, correction or withdrawal from the market without notice. All references to age, square footage, income, expenses, acreage, carrying capacity, and land classification, etc. are approximate. Prospective buyers are chargeable with and expected to conduct their own independent investigation of the information and the property and to rely only on those results. Sellers reserve the right to accept or reject any and all offers without liability to any buyer or cooperating broker.

Maps are provided for illustration purposes only, the accuracy is not warranted. Parcels on interactive maps are not adjusted to match aerial backgrounds. This information is for reference purposes only and is not a legal document. Data maps contain errors. The seller and seller's agent are making known to all potential buyers that there may be variations between the location of the existing fence lines and the legal description of the deeded property. Seller and seller's agent make no warranties with regard to the location of the fence lines in relationship to the deeded property lines, nor does the Seller make any warranties or representations with regard to the specific acreage contained within the fenced property lines. Seller is selling the property in an "as is" condition, which includes the location of the fences as they exist. Boundaries shown on the accompanying maps are approximate, based on county parcel data. The maps are not to scale. The accuracy of the maps is not guaranteed. Prospective buyers are encouraged to verify fence lines, deeded property lines and acreages using a licensed surveyor at their own expense.



Compass Land Partners
452 Upchurch Ln
Walterboro, SC 29488
(800) 731-2278
<https://compasslandpartners.com/>

