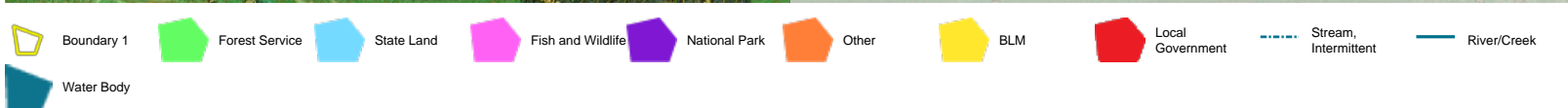
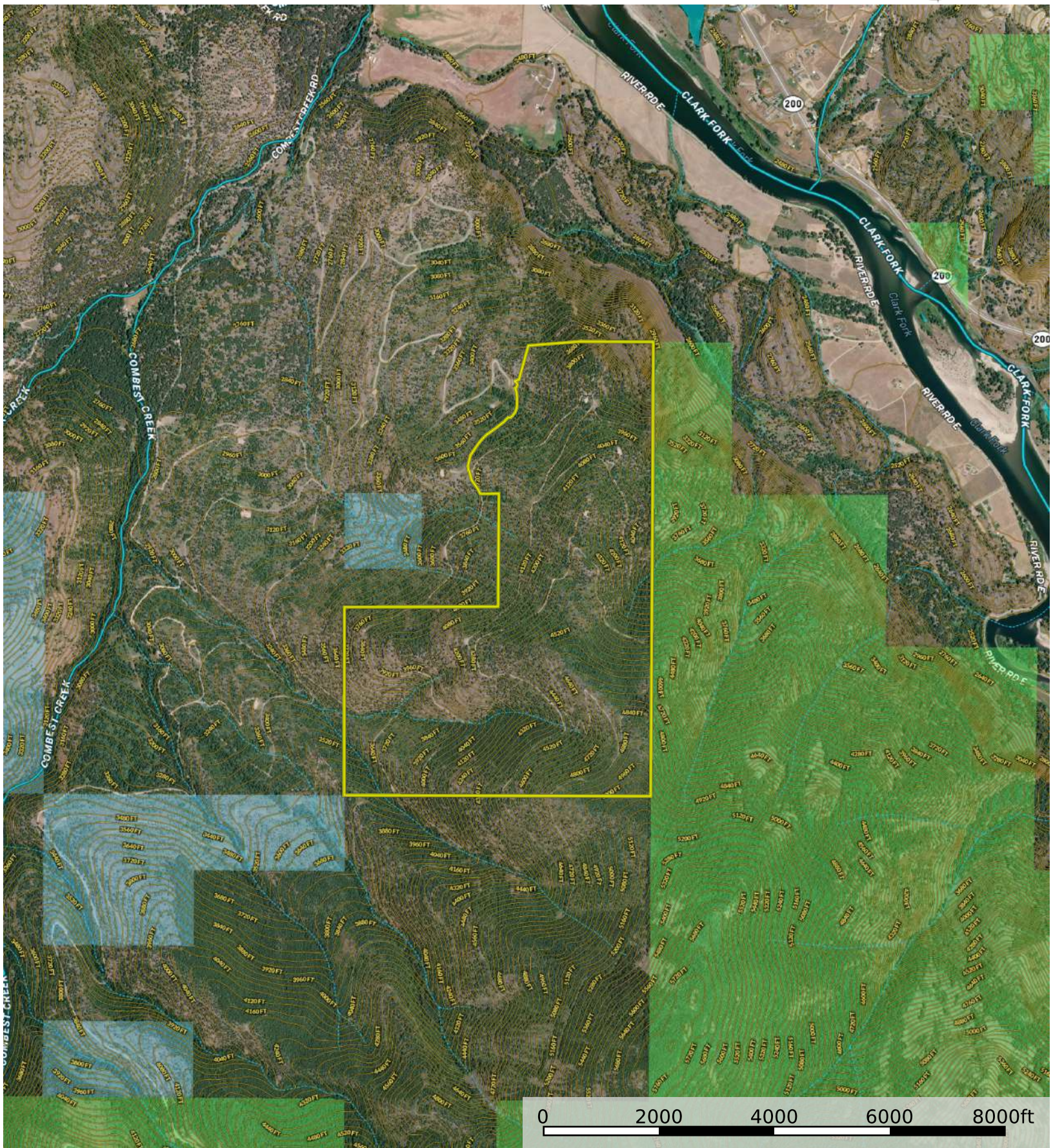
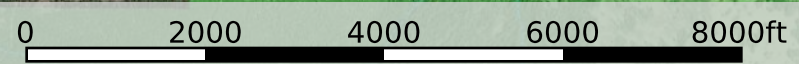
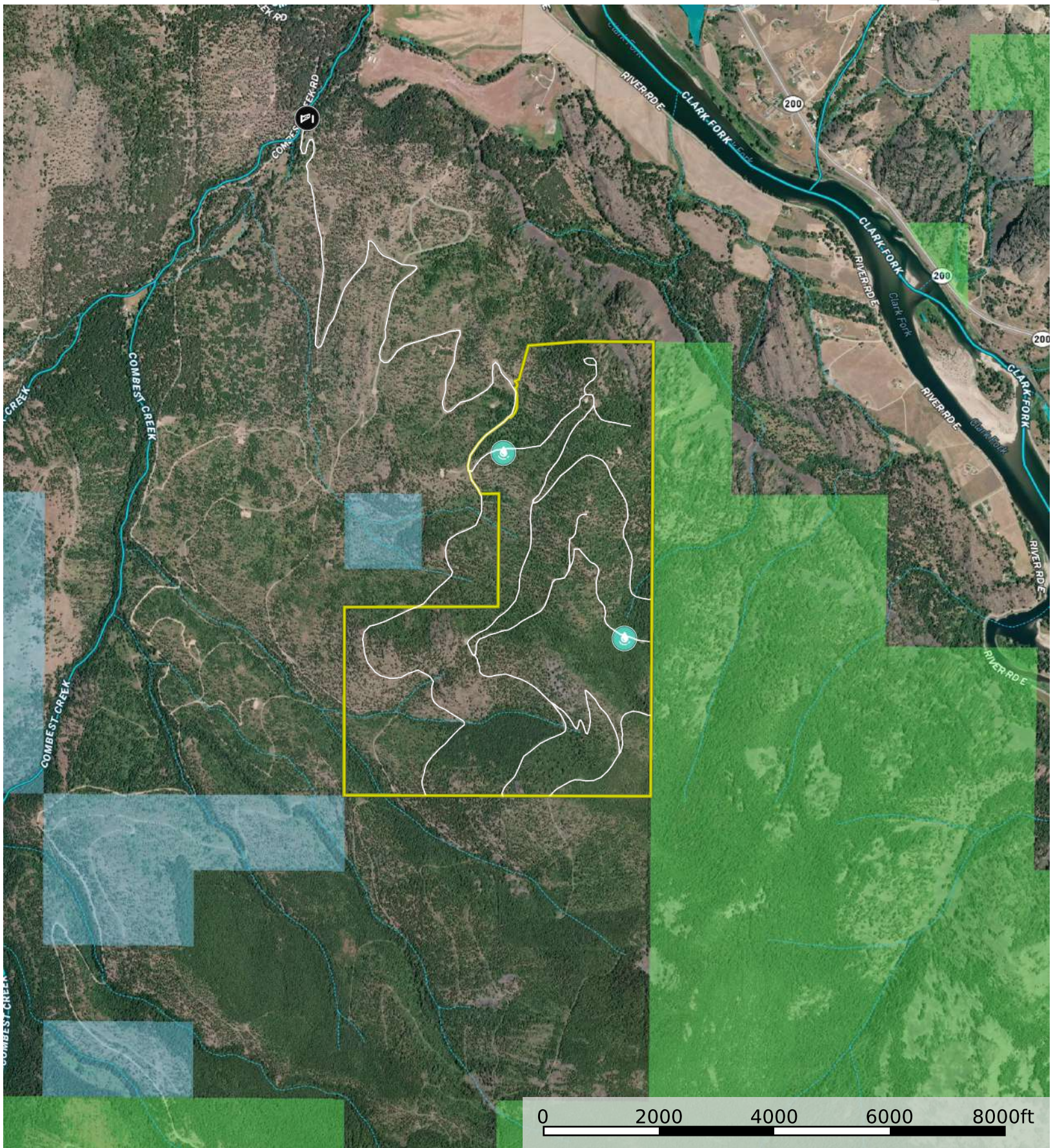
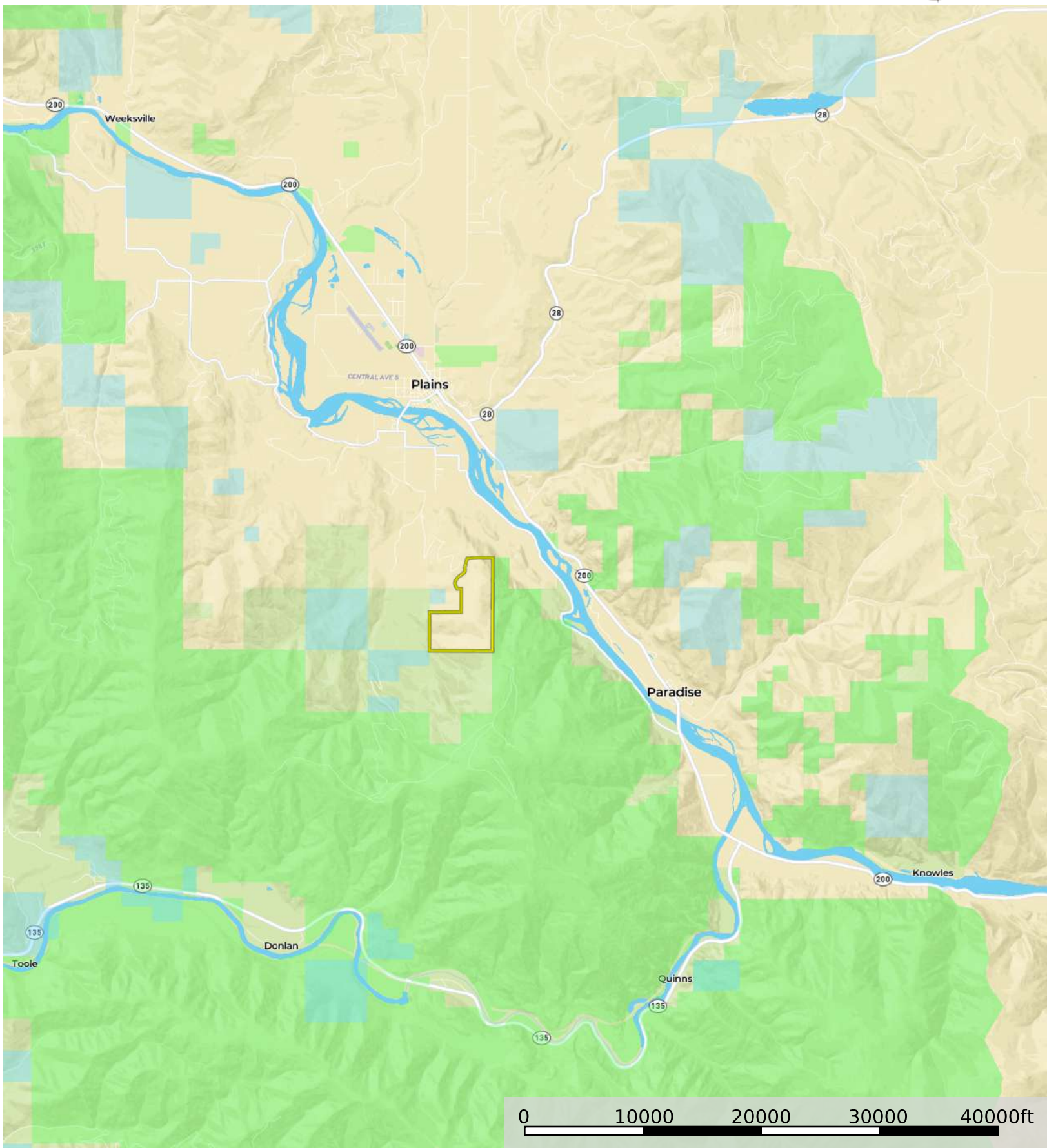


- Boundary 1
- Forest Service
- State Land
- Fish and Wildlife
- National Park
- Other
- BLM
- Local Government
- Stream, Intermittent
- River/Creek
- Water Body





- Gate
- Spring
- Primary Road
- Boundary 1
- Forest Service
- State Land
- Fish and Wildlife
- National Park
- Other
- BLM
- Local Government
- Stream, Intermittent
- River/Creek
- Water Body



- Boundary 1
- Forest Service
- State Land
- Fish and Wildlife
- National Park
- Other
- BLM
- Local Government

