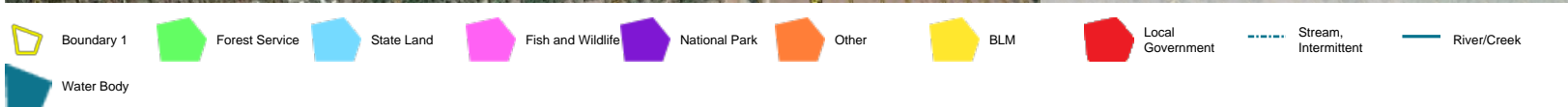
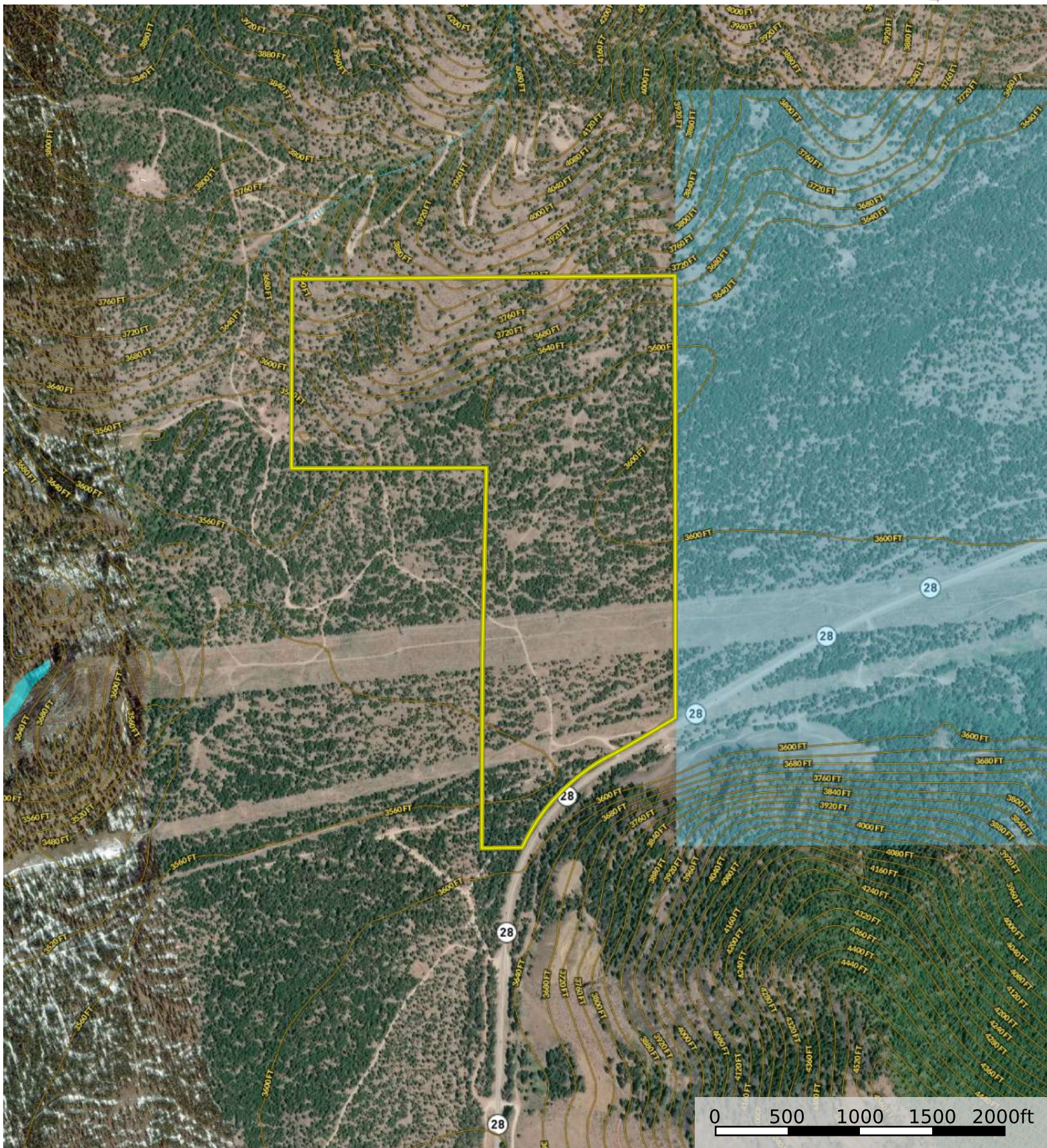
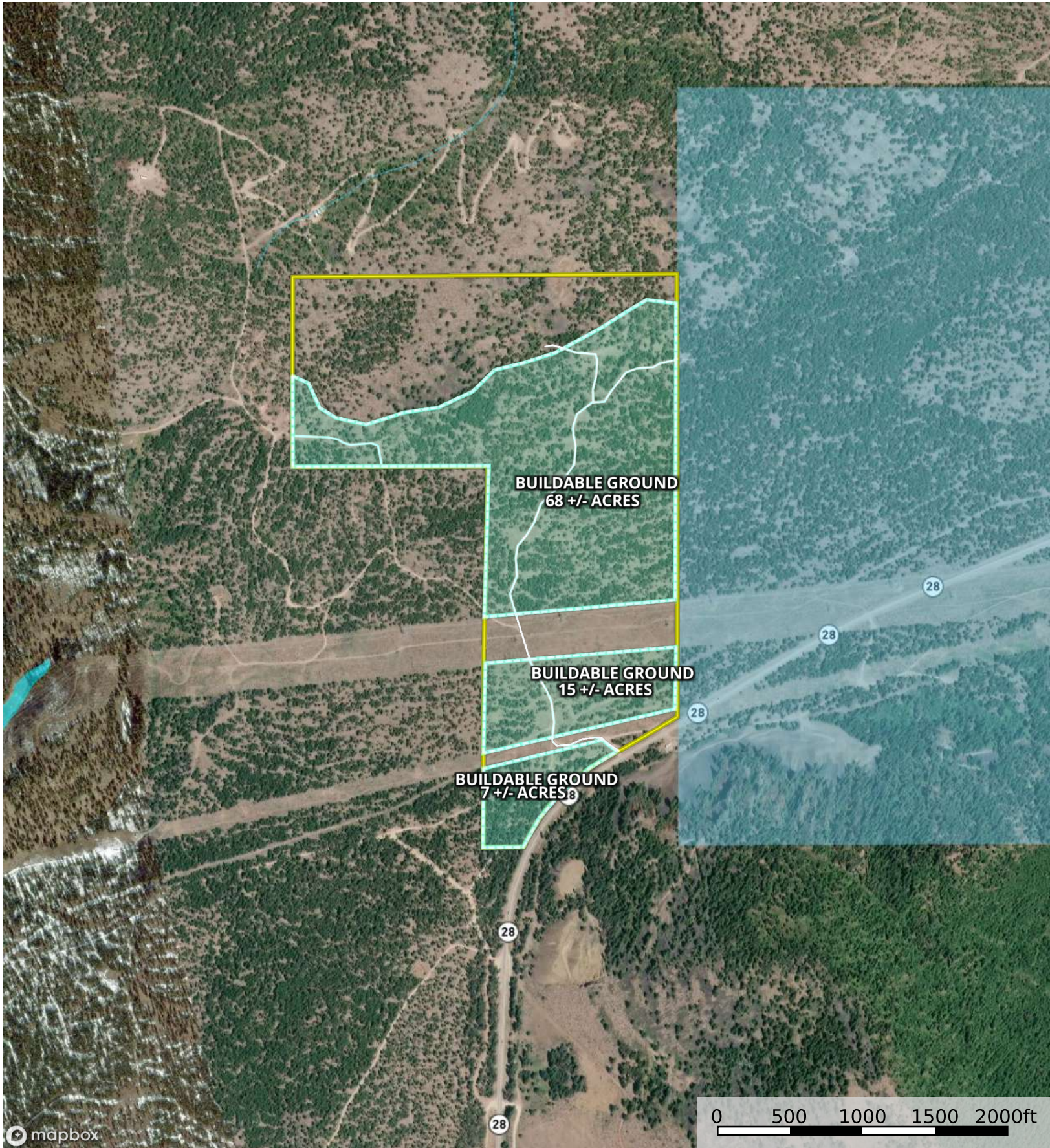


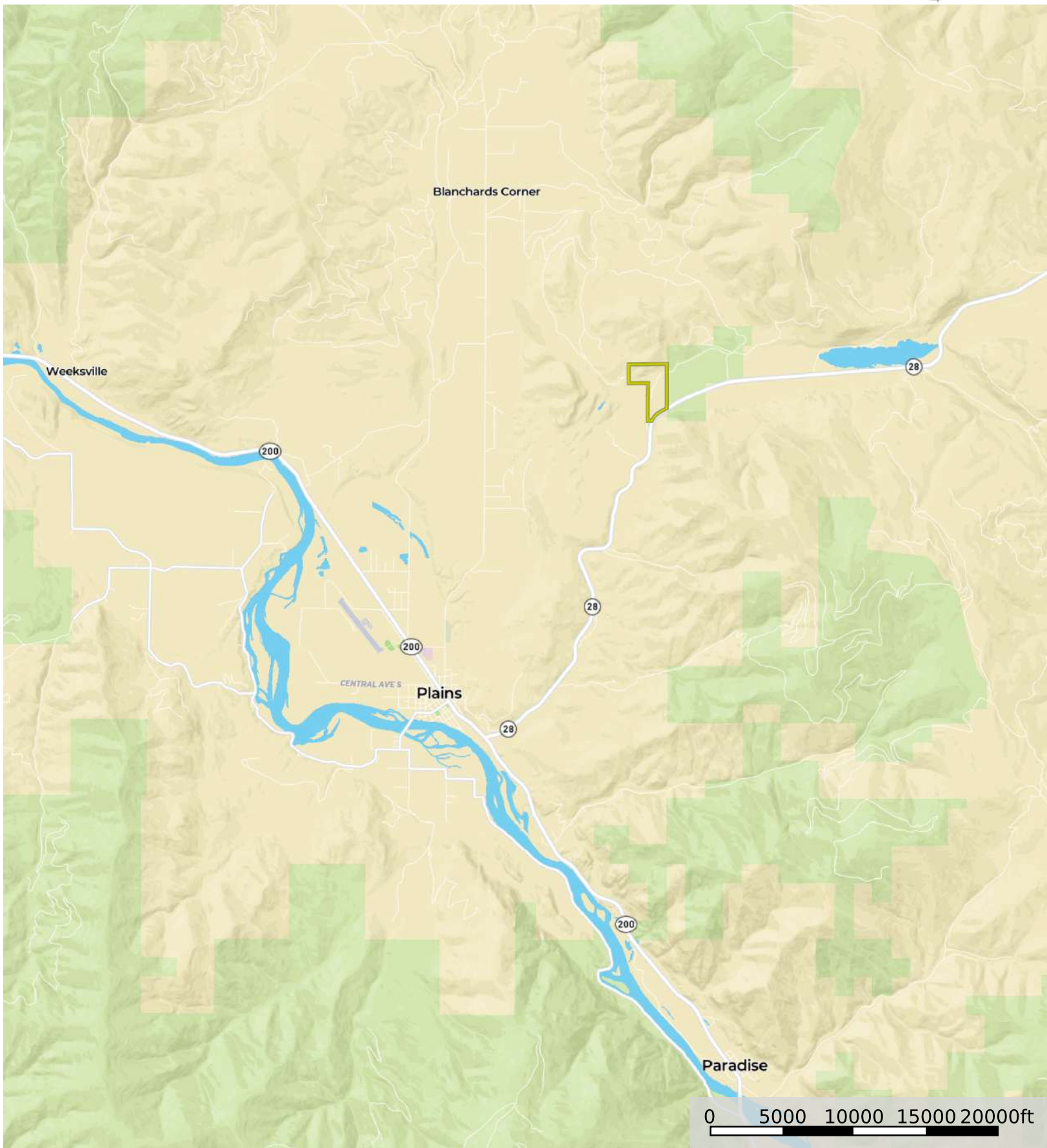
Boundary 1   Forest Service   State Land   Fish and Wildlife   National Park   Other   BLM   Local Government   Stream, Intermittent   River/Creek

Water Body





- Primary Road 3
- Primary Road 1
- Primary Road 2
- Boundary 1
- Boundary 1
- Forest Service
- State Land
- Fish and Wildlife
- National Park
- Other
- BLM
- Local Government
- Stream, Intermittent
- River/Creek
- Water Body



Boundary 1

