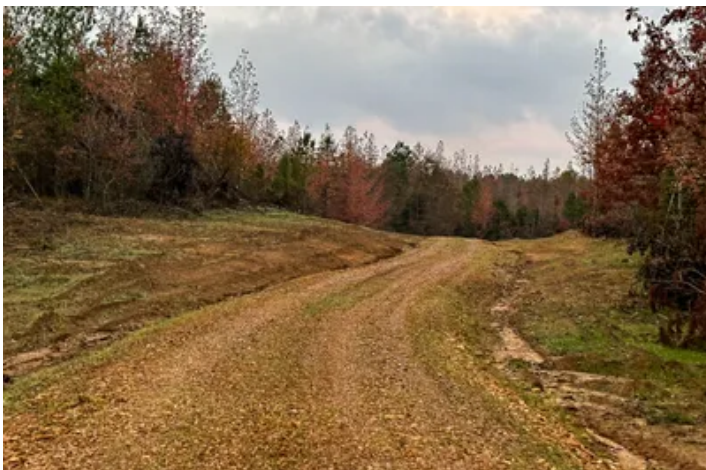


HINES GIN RETREAT
0 Hines Gin Rd
Selmer, TN 38375

\$326,700
99± Acres
McNairy County



HINES GIN RETREAT
Selmer, TN / McNairy County

SUMMARY

Address

0 Hines Gin Rd

City, State Zip

Selmer, TN 38375

County

McNairy County

Type

Hunting Land, Farms, Recreational Land, Ranches

Latitude / Longitude

35.18608 / -88.67159

Acreage

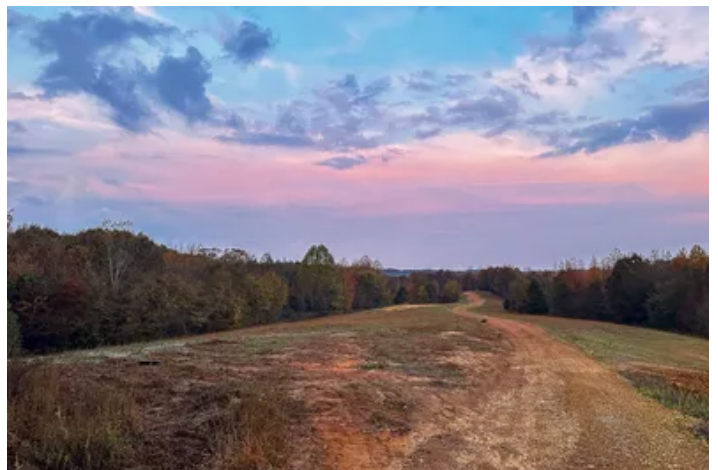
99

Price

\$326,700

Property Website

<https://compasslandpartners.com/property/hines-gin-retreat/mcnairy/tennessee/97554/>



HINES GIN RETREAT

Selmer, TN / McNairy County

PROPERTY DESCRIPTION

Escape to your own private haven with the Hines Gin Road Retreat, a 99-acre property in Selmer, Tennessee. This exceptional offering presents a blend of natural beauty and versatile potential, perfect for those seeking a hunting property, a recreational paradise, or a farm/ranch location. Imagine exploring diverse landscapes and enjoying the tranquility of your own expansive acreage, a true escape from the everyday hustle and bustle.

Location

Nestled within the charming city of Selmer in McNairy County, Tennessee, this property provides the peaceful ambiance of rural living while maintaining convenient access to local amenities. The area is renowned for its natural beauty and community spirit, offering a desirable setting for both residents and visitors.

Land and Terrain

This impressive 99-acre parcel boasts a diverse and dynamic terrain. The soil features a mix of clay and gravel, providing a robust foundation for various uses. The land is thoughtfully divided with areas that are cleared, grassed, and wooded, offering a rich tapestry of landscapes. This variety provides both open spaces for potential development or cultivation and dense woodlands for privacy and wildlife habitat.

Improvements and Infrastructure

The property features a serene pond, adding a picturesque element and serving as a valuable water source for wildlife and potential livestock. The existing infrastructure provides a solid foundation, allowing new owners the freedom to envision and implement further enhancements to suit their specific needs and aspirations.

Water and Utilities

A beautiful pond graces the property, offering a natural water feature and potential for various recreational activities or agricultural support. The land is ready for you to add your preferred utility connections and design a system that perfectly aligns with your vision for development and comfort.

Wildlife and Vegetation

The Hines Gin Road Retreat is a haven for wildlife, including dove, small game, turkey, and whitetail deer, making it an ideal spot for nature enthusiasts and hunters alike. The diverse vegetation includes cleared, grassed, and wooded areas that create a rich and varied ecosystem, supporting the wildlife population.

Current and Potential Use

Currently utilized for hunting and recreation, this property offers incredible versatility. Its potential extends to mixed use, making it suitable for a range of possibilities from a private estate to a working farm or ranch. The recreational opportunities are vast, including ATV trails, bike trails, hiking trails, and exceptional hunting.

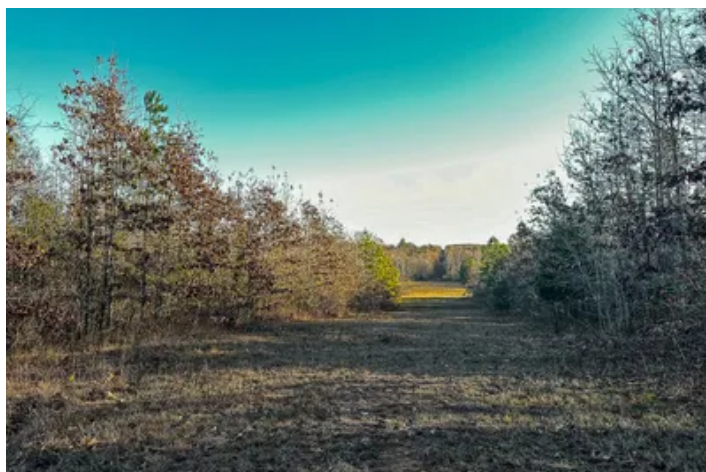
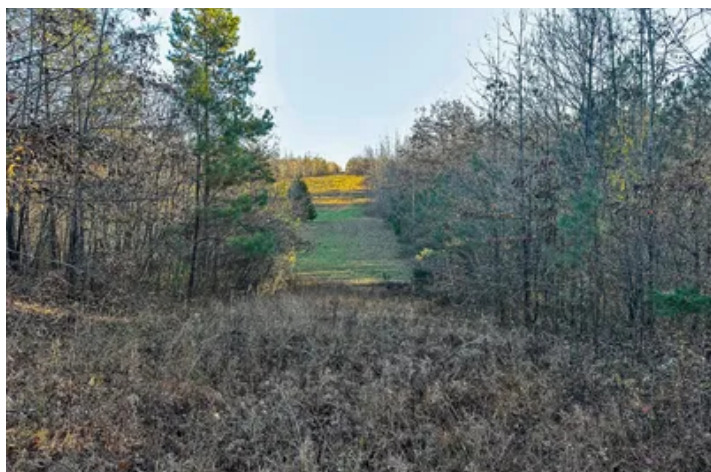
Access and Easements

Access to the property is excellent, with frontage on a county road. Both asphalt and gravel roads ensure easy year-round entry. The property conveys with valuable property rights, including mineral and other rights, providing comprehensive ownership.

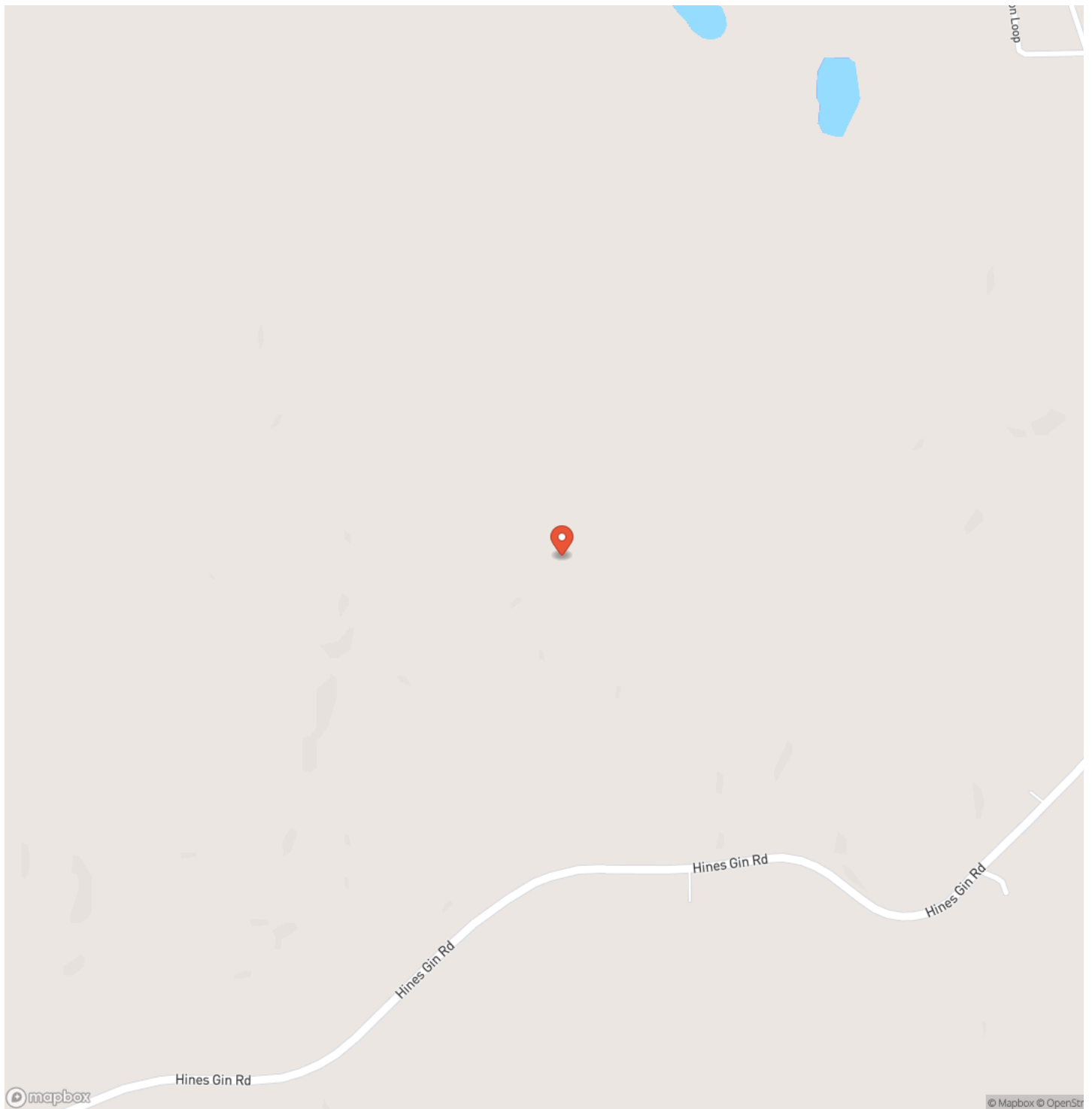
Contact us today to learn more or to schedule a visit.



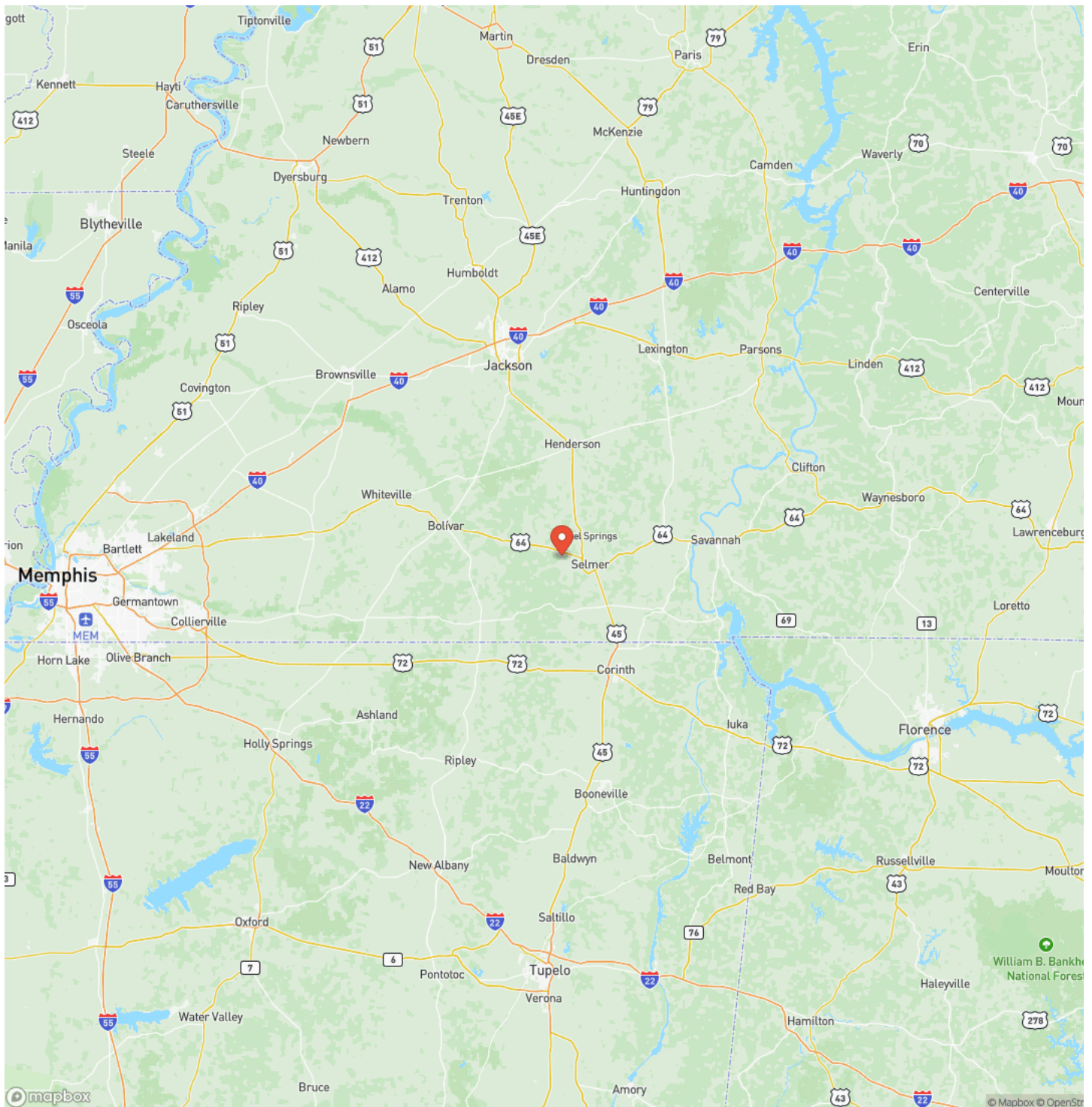
HINES GIN RETREAT
Selmer, TN / McNairy County



Locator Map



Locator Map



Satellite Map



HINES GIN RETREAT
Selmer, TN / McNairy County

LISTING REPRESENTATIVE

For more information contact:



Representative

Michael Davis

Mobile

(629) 222-1452

Office

(800) 731-2278

Email

Michael.Davis@compasssouth.com

Address

City / State / Zip

Dickson, TN 37029

NOTES

This image shows a blank sheet of white paper with horizontal ruling lines. The lines are evenly spaced and run across the width of the page. There are no margins, text, or other markings on the paper.

This image shows a single sheet of white paper with horizontal ruling lines. The lines are evenly spaced and run across the width of the page. There are no margins, text, or other markings on the paper.



<https://compasslandpartners.com/>

DISCLAIMERS

Information in this brochure is provided solely for information purposes and does not constitute an offer to sell or advertise real estate outside the states in which broker or agent licensed. The information presented has been obtained from sources deemed to be reliable, but is not guaranteed or warranted by the agent, broker, or the sellers of these properties. This offering is subject to errors, omissions, prior sale, price change, correction or withdrawal from the market without notice. All references to age, square footage, income, expenses, acreage, carrying capacity, and land classification, etc. are approximate. Prospective buyers are chargeable with and expected to conduct their own independent investigation of the information and the property and to rely only on those results. Sellers reserve the right to accept or reject any and all offers without liability to any buyer or cooperating broker.

Maps are provided for illustration purposes only, the accuracy is not warranted. Parcels on interactive maps are not adjusted to match aerial backgrounds. This information is for reference purposes only and is not a legal document. Data maps contain errors. The seller and seller's agent are making known to all potential buyers that there may be variations between the location of the existing fence lines and the legal description of the deeded property. Seller and seller's agent make no warranties with regard to the location of the fence lines in relationship to the deeded property lines, nor does the Seller make any warranties or representations with regard to the specific acreage contained within the fenced property lines. Seller is selling the property in an "as is" condition, which includes the location of the fences as they exist. Boundaries shown on the accompanying maps are approximate, based on county parcel data. The maps are not to scale. The accuracy of the maps is not guaranteed. Prospective buyers are encouraged to verify fence lines, deeded property lines and acreages using a licensed surveyor at their own expense.



Compass Land Partners
452 Upchurch Ln
Walterboro, SC 29488
(800) 731-2278
<https://compasslandpartners.com/>

