

**ROBERT RAWLS TRACT**  
0 Robert Rawls Loop Tract  
Robeline, LA 71469

**\$181,500**  
40± Acres  
Natchitoches County



**ROBERT RAWLS TRACT**  
**Robeline, LA / Natchitoches County**

---

**SUMMARY**

**Address**

0 Robert Rawls Loop Tract

**City, State Zip**

Robeline, LA 71469

**County**

Natchitoches County

**Type**

Timberland

**Latitude / Longitude**

31.7491 / -93.33665

**Acreage**

40

**Price**

\$181,500

**Property Website**

<https://compasslandpartners.com/property/robert-rawls-tract-/natchitoches/louisiana/100035/>



## **ROBERT RAWLS TRACT**

### **Robeline, LA / Natchitoches County**

---

#### **PROPERTY DESCRIPTION**

The Robert Rawls Tract is a 40-acre property in Natchitoches Parish, Louisiana, offered at \$181,500. The tract includes approximately 1,300 feet of frontage on Robert Rawls Loop and features a mixture of mature hardwood and a 2006 planted pine plantation. With abundant deer and turkey populations, this is a practical recreational tract.

#### **Location**

The property is located in Natchitoches Parish, Louisiana, approximately 10 minutes from Robeline and about 30 minutes from Natchitoches, providing the new owner a rural setting with quick access to nearby services. Robeline is convenient for day-to-day needs like fuel and basic supplies, while Natchitoches adds access to a larger hub for shopping, dining, medical care, and contractors.

#### **Access**

The tract has approximately 1,300 feet of road frontage on Robert Rawls Loop (gravel road), providing direct access.

#### **Improvements**

The absence of improvements means you can design the tract to meet your goals instead of working around someone else's layout. You have the freedom to choose the best homesite, trail system, food plot locations, and more. Starting with a clean slate reduces upfront maintenance and surprise costs, because there are no older buildings, wells, septic systems, or fences to repair or remove.

#### **Timber**

The timber is composed of a mixture of mature hardwood and a 2006 planted pine plantation. The pines represent income potential and long-term value among a clean, consistent timber stand that is easily navigable and manageable.

The hardwoods not only add visual variety and shade, they also add diversity to your investment since you are not relying on a single timber type.

#### **Wildlife and Recreation**

Deer and turkeys find cover among the pines, which make establishing trails, shooting lanes, and access routes simple. In addition to hunting, the tract is perfect for hiking, trail riding, wildlife observation, photography, and other general recreational activities.

#### **Utilities**

Power adjoins the property, making modern conveniences easily attainable.

#### **Summary**

With gravel road frontage, a mix of hardwood and planted pine timber, adjoining power, and a location within easy driving distance of Robeline and Natchitoches, the Robert Rawls Loop Tract offers a solid recreational and timber opportunity in Natchitoches Parish.

Contact us today to schedule a showing.

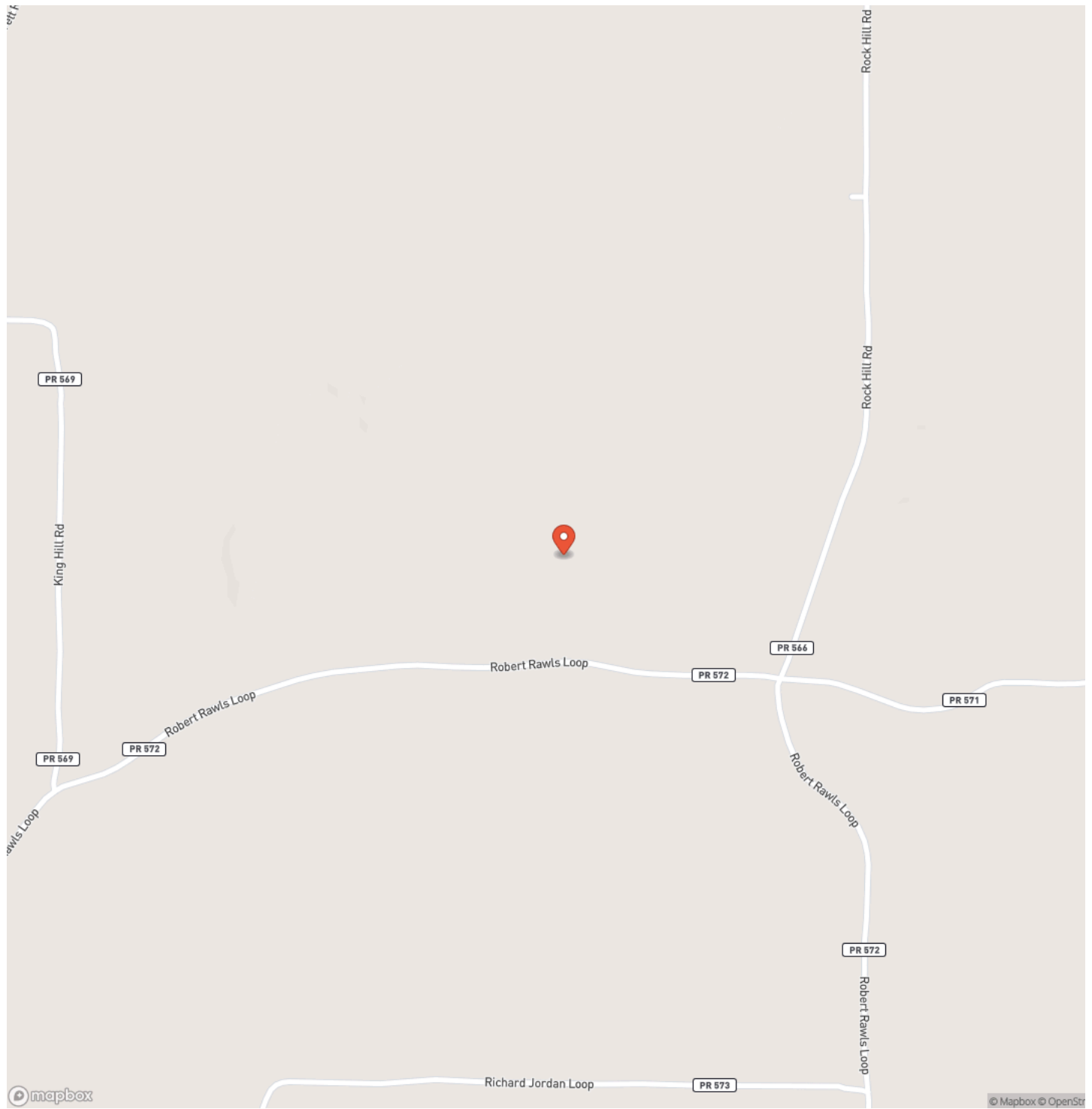


**ROBERT RAWLS TRACT**  
**Robeline, LA / Natchitoches County**

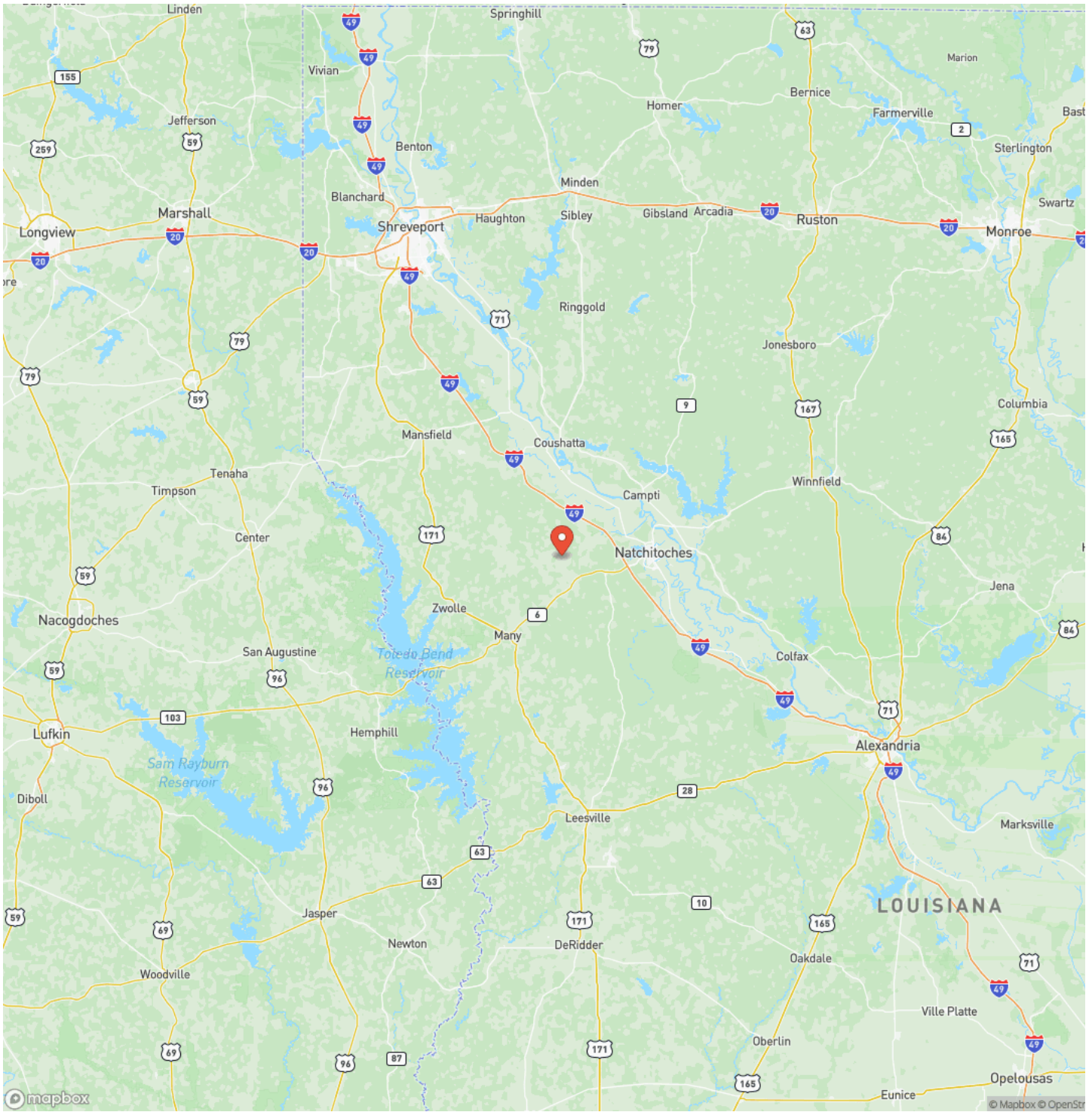
---



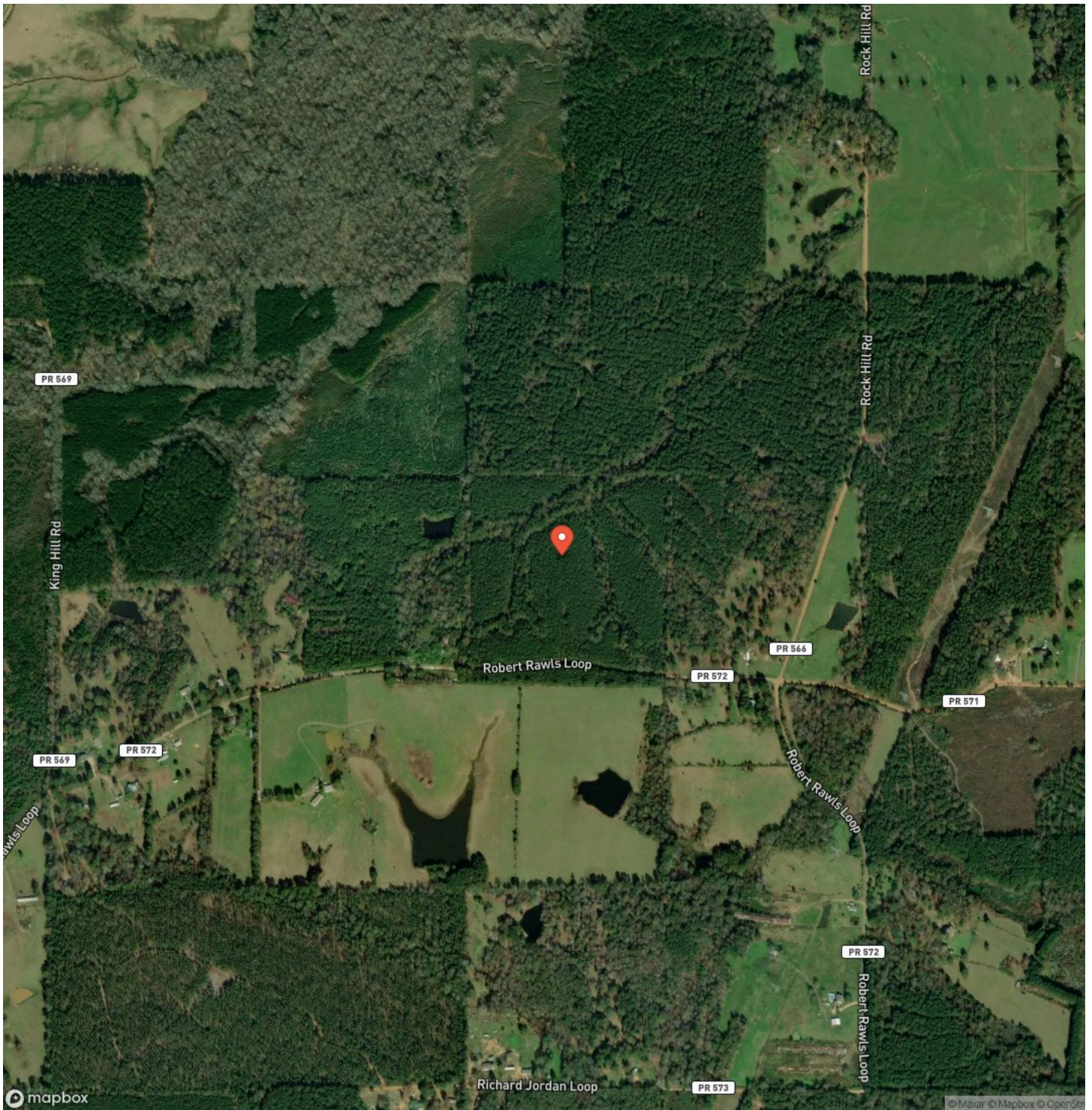
## Locator Map



# Locator Map



## Satellite Map







## **DISCLAIMERS**

Information in this brochure is provided solely for information purposes and does not constitute an offer to sell or advertise real estate outside the states in which broker or agent licensed. The information presented has been obtained from sources deemed to be reliable, but is not guaranteed or warranted by the agent, broker, or the sellers of these properties. This offering is subject to errors, omissions, prior sale, price change, correction or withdrawal from the market without notice. All references to age, square footage, income, expenses, acreage, carrying capacity, and land classification, etc. are approximate. Prospective buyers are chargeable with and expected to conduct their own independent investigation of the information and the property and to rely only on those results. Sellers reserve the right to accept or reject any and all offers without liability to any buyer or cooperating broker.

Maps are provided for illustration purposes only, the accuracy is not warranted. Parcels on interactive maps are not adjusted to match aerial backgrounds. This information is for reference purposes only and is not a legal document. Data maps contain errors. The seller and seller's agent are making known to all potential buyers that there may be variations between the location of the existing fence lines and the legal description of the deeded property. Seller and seller's agent make no warranties with regard to the location of the fence lines in relationship to the deeded property lines, nor does the Seller make any warranties or representations with regard to the specific acreage contained within the fenced property lines. Seller is selling the property in an "as is" condition, which includes the location of the fences as they exist. Boundaries shown on the accompanying maps are approximate, based on county parcel data. The maps are not to scale. The accuracy of the maps is not guaranteed. Prospective buyers are encouraged to verify fence lines, deeded property lines and acreages using a licensed surveyor at their own expense.



---

**Compass Land Partners**  
452 Upchurch Ln  
Walterboro, SC 29488  
(800) 731-2278  
<https://compasslandpartners.com/>

---

