

TBD CR 356, Anson
TBD CR 356
Anson, TX 79501

\$399,900
57.26± Acres
Jones County



**TBD CR 356, Anson
Anson, TX / Jones County**

SUMMARY

Address

TBD CR 356

City, State Zip

Anson, TX 79501

County

Jones County

Type

Hunting Land, Recreational Land, Ranches

Latitude / Longitude

32.708 / -99.7215

Acreage

57.26

Price

\$399,900

Property Website

<https://redfarmrealty.com/property/tbd-cr-356-anson/jones/texas/101385/>



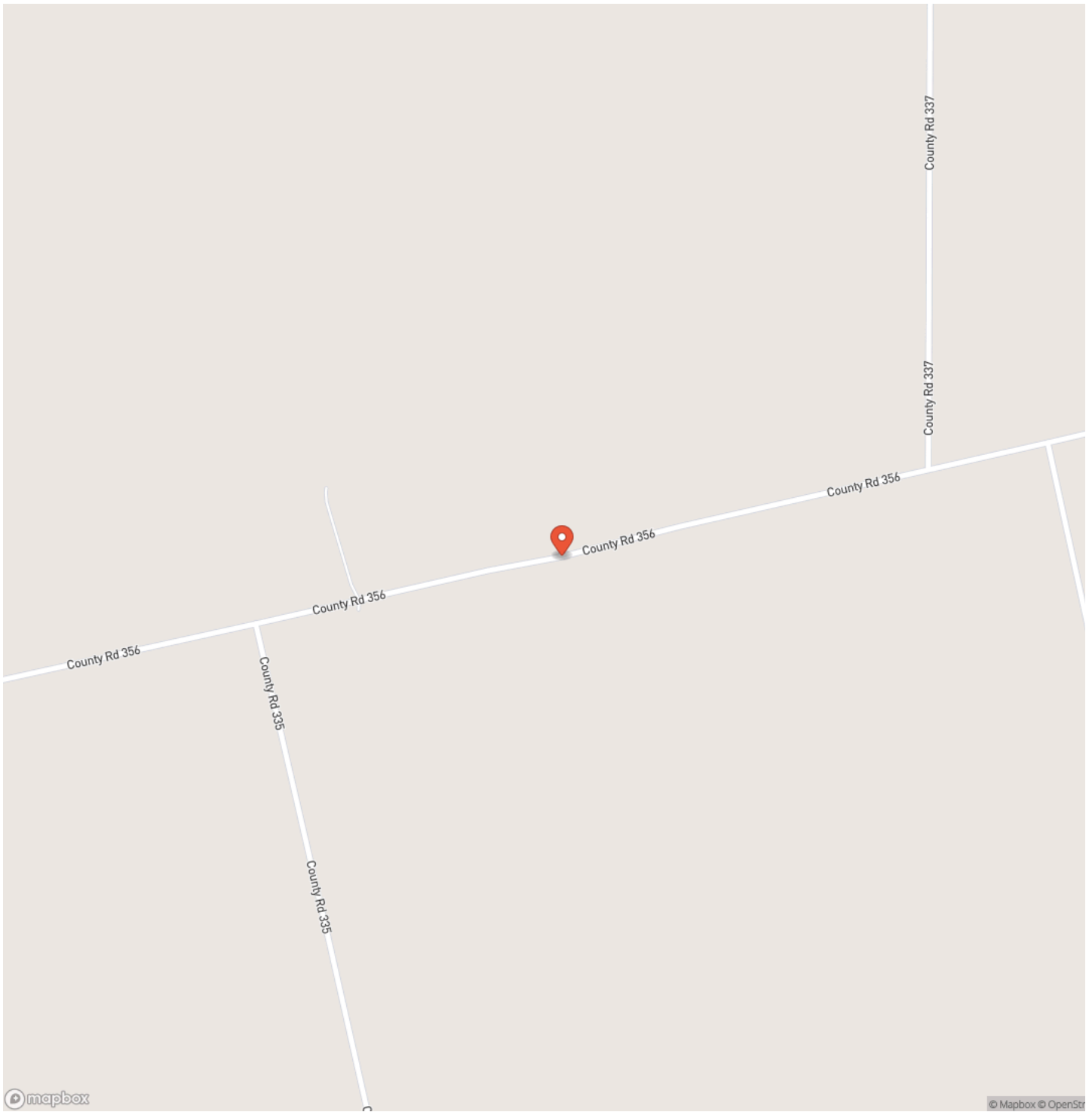
PROPERTY DESCRIPTION

Just 17 miles from Abilene sits this beautiful 57-acre turnkey hunting retreat that perfectly blends outdoor adventure with modern comfort. The property features a cozy one-bedroom cabin complete with a full kitchen, spacious living area, and full bathroom, creating a comfortable and inviting space to relax after a day in the field. Heated and cooled by an efficient mini-split system, the cabin stays comfortable year-round and is fully connected to city water, electric, and septic. There's also a 24x20 storage shed ideal for storing ATVs, hunting equipment, or tools, and utilities are already in place on the opposite end of the property for future expansion or an RV setup. The land itself has been carefully managed over the past few years and shows the results-large whitetail deer, bobcats, hogs, and turkeys have all been seen on camera. The property has recently been cleared in several areas with trails opened up for easy access to blinds and feeders, making it effortless to navigate and enjoy. Toward the back of the property, an area has been cleared and prepped for a food plot, adding even more potential to attract wildlife and enhance hunting opportunities. With a great mix of open clearings and wooded cover, this land offers both excellent recreation and natural beauty. Whether you're looking for a weekend getaway, a place to manage and hunt, or simply a peaceful escape from the city, this 57-acre ranchette is ready to go-comfortable, well-equipped, and full of possibilities. It's a true memory maker for the whole family, offering the best of country living just a short drive from the conveniences of Abilene.

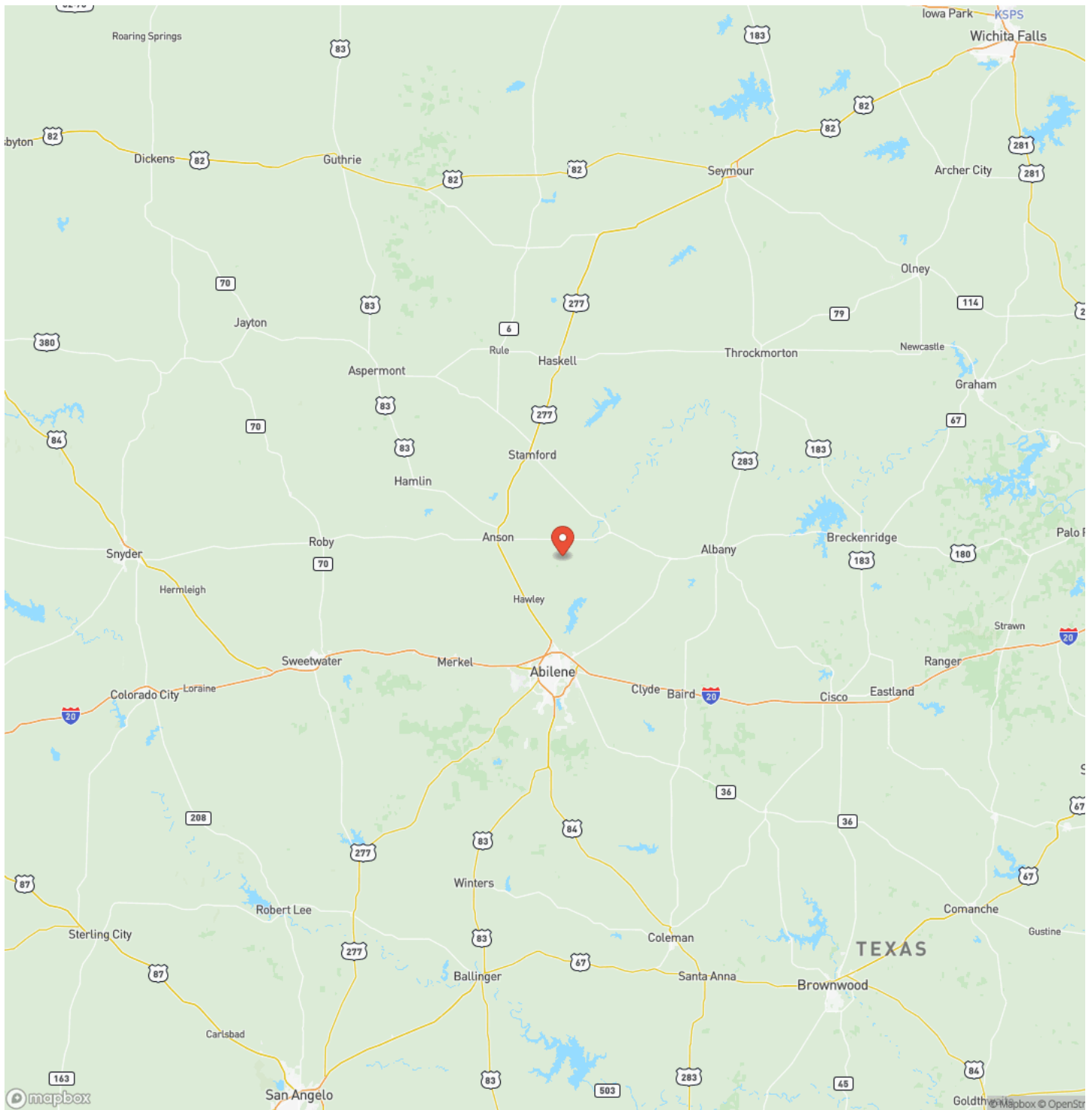




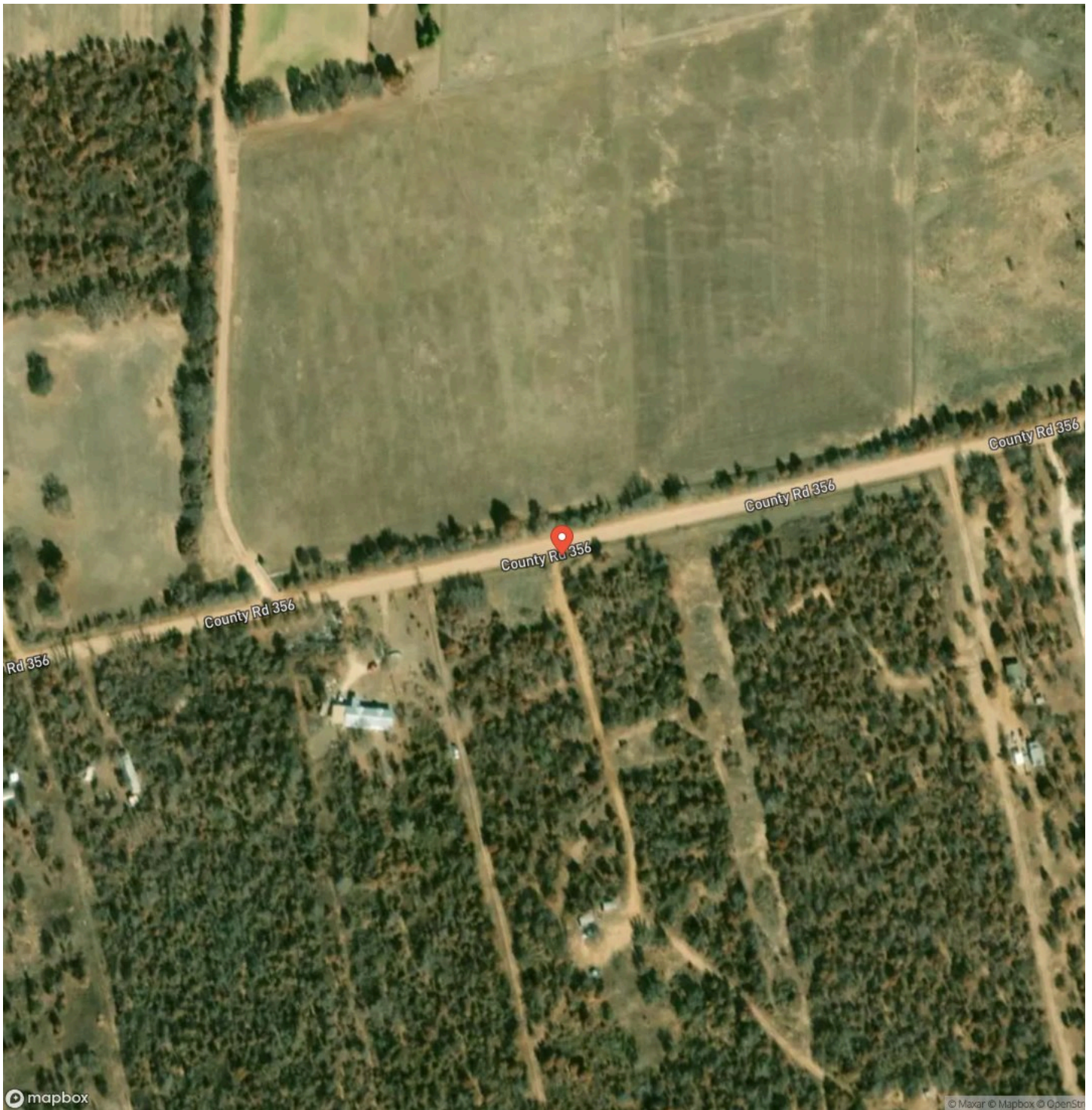
Locator Map



Locator Map



Satellite Map



DISCLAIMERS

Information for this listing is provided solely for information purposes and does not constitute an offer to sell or advertise real estate outside the states in which broker or agent licensed. The information presented has been obtained from sources deemed to be reliable, but is not guaranteed or warranted by the agent, broker, or the sellers of these properties. This offering is subject to errors, omissions, prior sale, price change, correction or withdrawal from the market without notice. All references to age, square footage, income, expenses, acreage, carrying capacity, and land classification, etc. are approximate. Prospective buyers are chargeable with and expected to conduct their own independent investigation of the information and the property and to rely only on those results. Sellers reserve the right to accept or reject any and all offers without liability to any buyer or cooperating broker. Maps are provided for illustration purposes only, the accuracy is not warranted. Parcels on interactive maps are not adjusted to match aerial backgrounds. This information is for reference purposes only and is not a legal document. Data maps contain errors. The seller and seller's agent are making known to all potential buyers that there may be variations between the location of the existing fence lines and the legal description of the deeded property. Seller and seller's agent make no warranties with regard to the location of the fence lines in relationship to the deeded property lines, nor does the Seller make any warranties or representations with regard to the specific acreage contained within the fenced property lines. Seller is selling the property in an "as is" condition, which includes the location of the fences as they exist. Boundaries shown on the accompanying maps are approximate, based on county parcel data. The maps are not to scale. The accuracy of the maps is not guaranteed. Prospective buyers are encouraged to verify fence lines, deeded property lines and acreages using a licensed surveyor at their own expense.



Red Farm Realty LLC
462 County Road 241
Ovalo, TX 79541
(432) 638-5716
www.redfarmrealty.com

