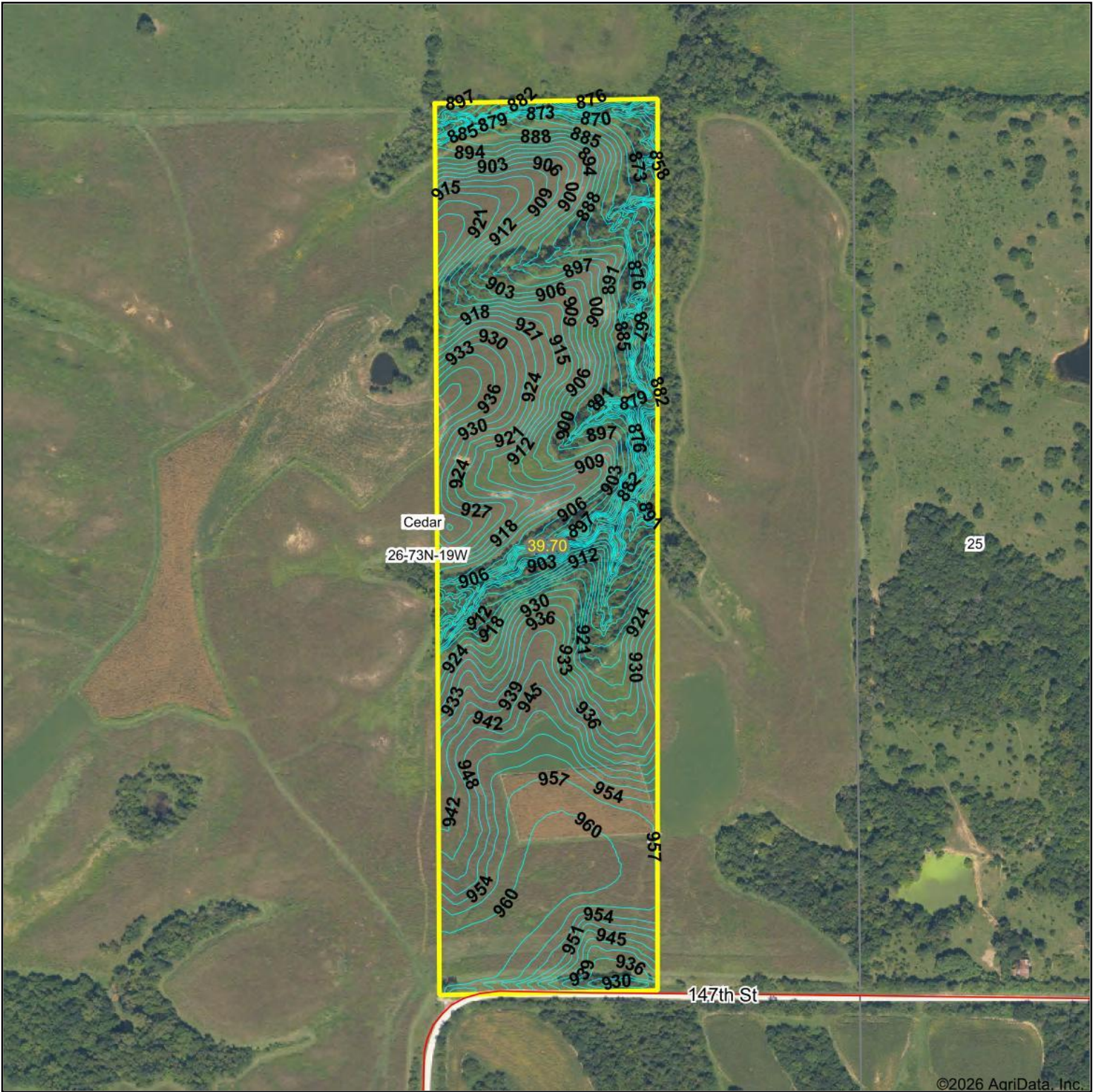
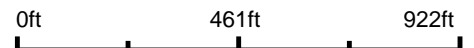


Topography Contours



Source: USGS 1 meter dem
Interval(ft): 3.0
Min: 852.2
Max: 961.6
Range: 109.4
Average: 921.8
Standard Deviation: 26.64 ft



6/12/2026

26-73N-19W
Monroe County
Iowa

Boundary Center: 41° 5' 45.11, -93° 0' 24.46

©2026 AgriData, Inc.