

40.3 Tillable Acres Knox County, IL
Coordinates: 40°55'8"N, 90°6'18"W

200.4 total acres

AVERAGE ANNUAL CASHRENT

\$14,266

=

\$354
Per acre

×

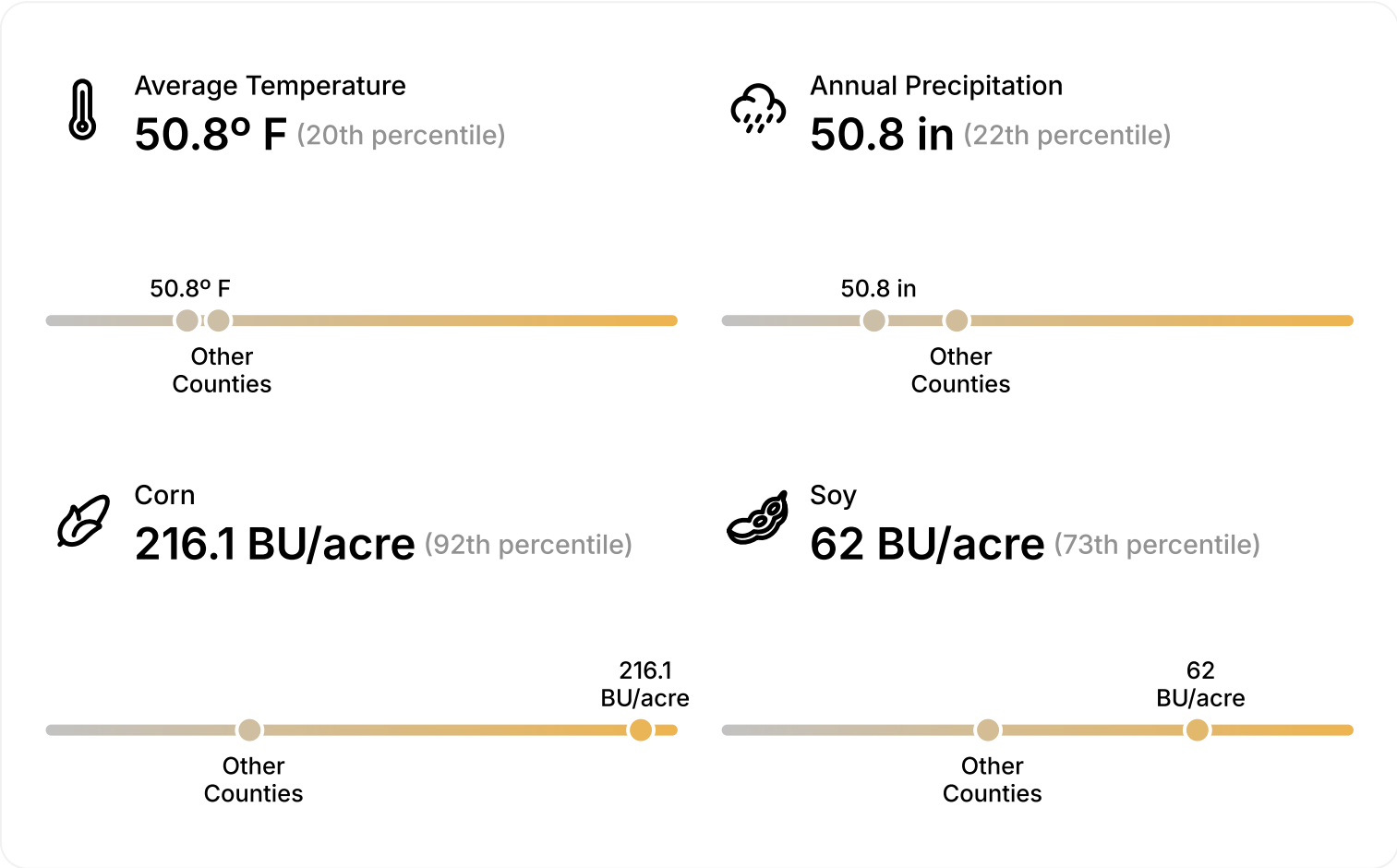
40.3
Tillable acres

Low Estimate
\$337/acre

High Estimate
\$371/acre

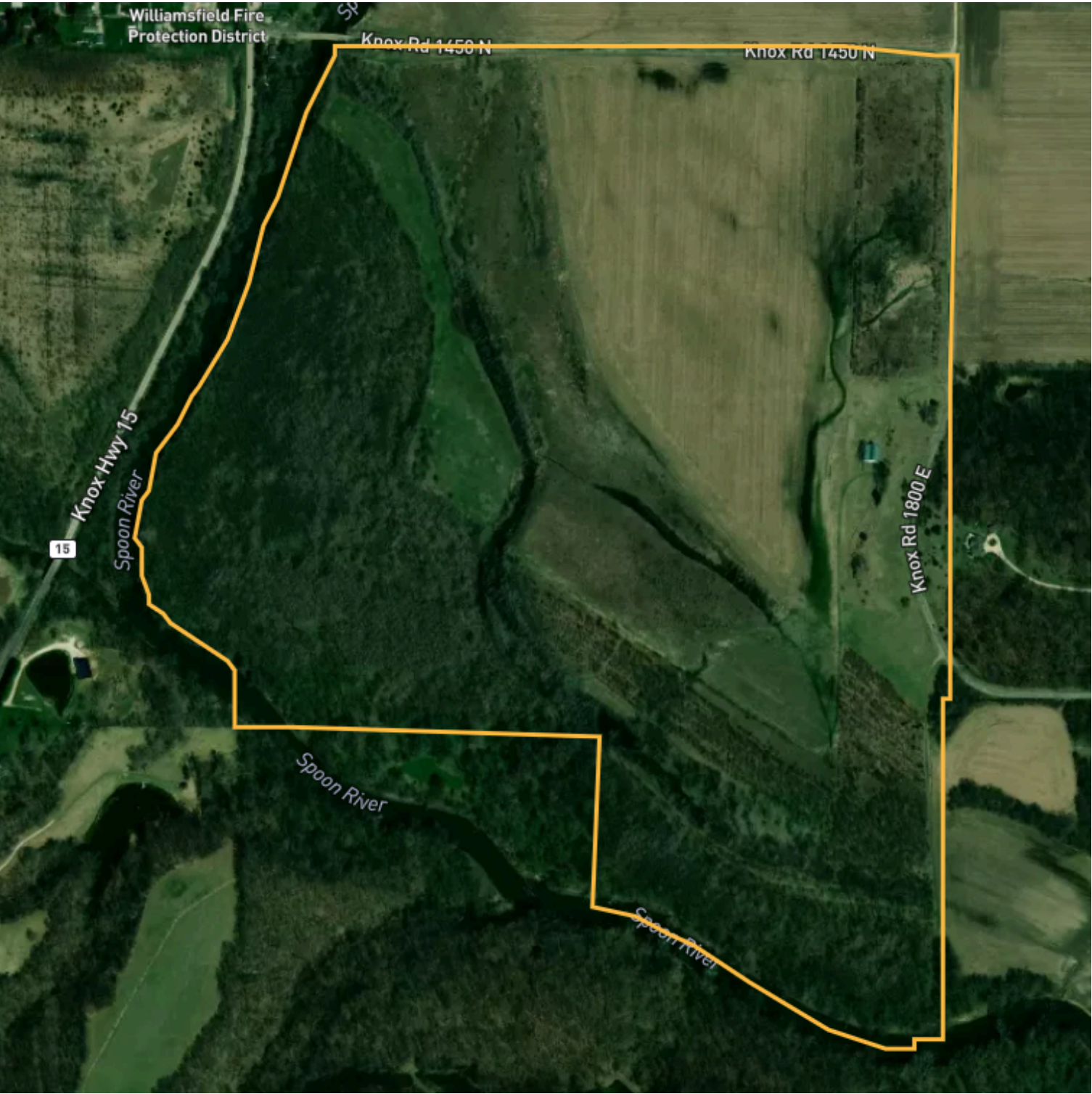
CashRental Value Factors

Variables that help determine your estimate



40.3 Tillable Acres Knox County, IL
Coordinates: 40°55'8"N, 90°6'18"W

200.4 total acres, 1 parcel



40.3 Tillable Acres Knox County, IL

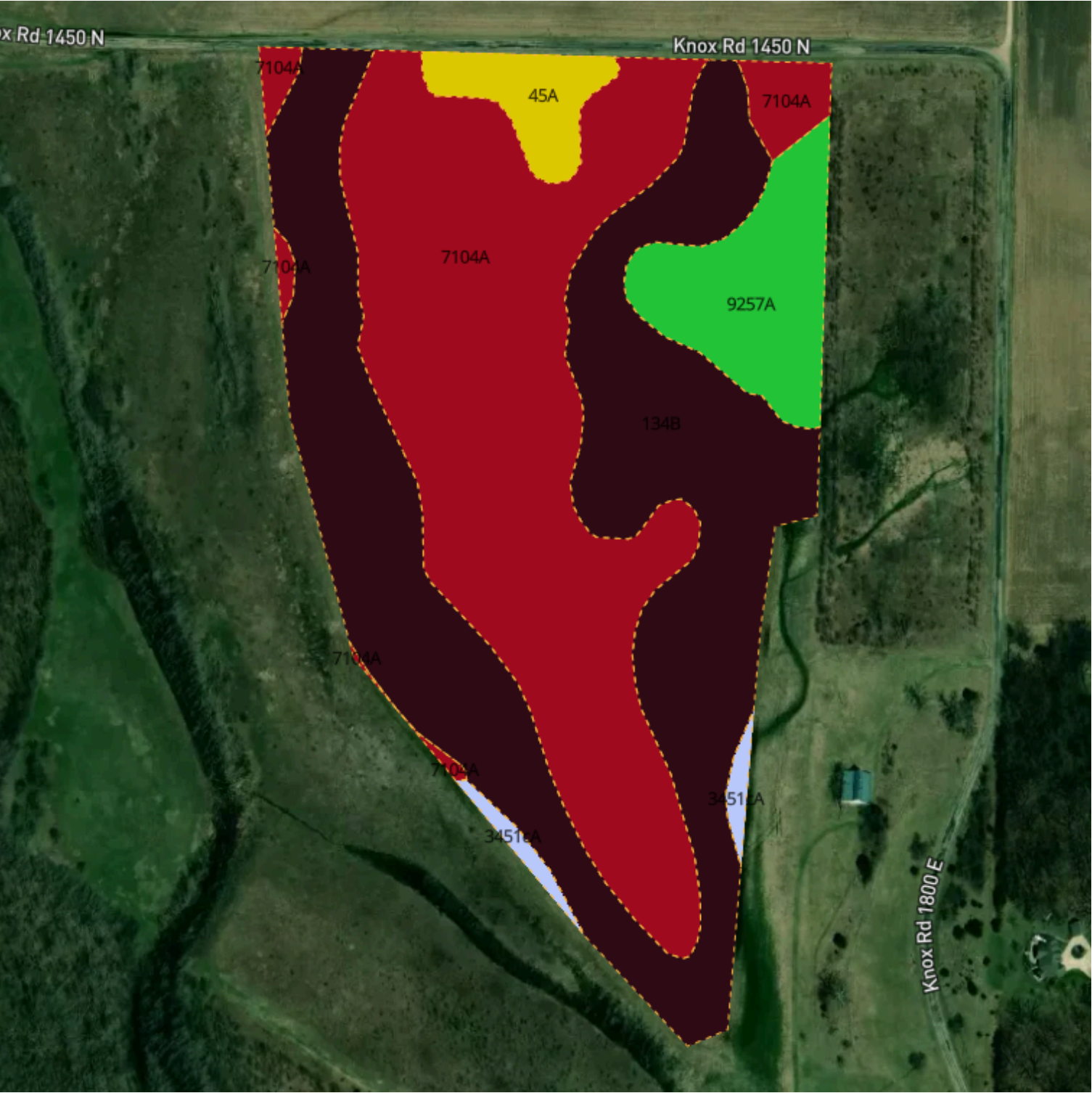
Coordinates: 40°55'8"N, 90°6'18"W






200.4 total acres, 1 parcel

| Selection | Acres | Parcel ID Number | Owner |
|-----------|--------|------------------|-------------------------------|
| 1 | 200.41 | 1124400009 | ILLINOIS FARM INVESTMENTS LLC |

40.3 Tillable Acres Knox County, IL
Coordinates: 40°55'8"N, 90°6'18"W

40.3 tillable acres, 1 selection



| 40.3 Tillable Acres Knox County, IL | | | 40.3 tillable acres, 1 selection | | |
|--|---|--|----------------------------------|------------|---------|
| Coordinates: 40°55'8"N, 90°6'18"W | | | | | |
| Soil Code | Soil Name | | Acres | % of Field | PI |
|  134B | Camden silt loam, 2 to 5 percent slopes | | 18.1 | 44.8% | 118 |
|  7104A | Virgil silt loam, 0 to 2 percent slopes, rarely flooded | | 17.2 | 42.5% | 132 |
|  9257A | Clarksdale silt loam, terrace, 0 to 2 percent slopes | | 3.3 | 8.2% | 128 |
|  45A | Denny silt loam, 0 to 2 percent slopes | | 1.3 | 3.3% | 118 |
|  3451cA | Lawson silt loam, cool mesic, 0 to 2 percent slopes, frequently flooded | | 0.4 | 1.1% | 140 |
| Total | | | 40.3 | | 125 avg |