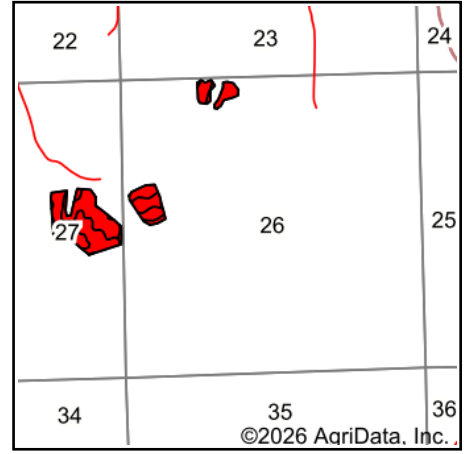
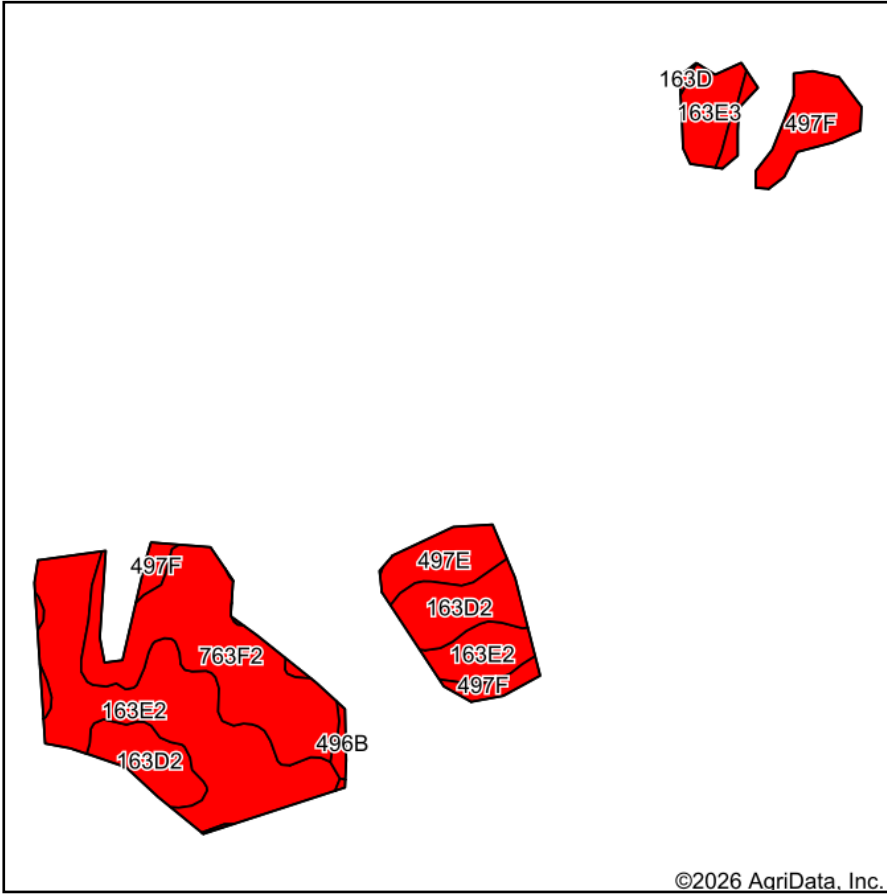


Soils Map



State: **Iowa**
 County: **Clayton**
 Location: **26-91N-2W**
 Township: **Millville**
 Acres: **32.91**
 Date: **5/1/2026**



Soils data provided by USDA and NRCS.

©2026 AgriData, Inc.

Area Symbol: IA043, Soil Area Version: 29

Code	Soil Description	Acres	Percent of field	CSR2 Legend	Restrictive Layer	Soil Drainage	Non-Irr Class *c	*i Corn Bu	*i Alfalfa Tons	*i Soybeans Bu	*i Bluegrass Tons	*i Tall Grasses Tons	*i Water-Holding Inch	CSR2**	CSR	*n NC Ov
163E2	Fayette silt loam, 14 to 18 percent slopes, moderately eroded	11.83	35.9%		> 6.5ft.	Well drained	Ive	140.8	3.9	40.8	2.5	4.2	11.6	35	48	
763F2	Exette silt loam, 18 to 25 percent slopes, moderately eroded	8.29	25.2%		> 6.5ft.	Well drained	Vle	129.6	3.6	37.6	2.3	3.9	12.7	28	26	
163D2	Fayette silt loam, 9 to 14 percent slopes, moderately eroded	4.66	14.2%		> 6.5ft.	Well drained	llle	164.8	4.6	47.8	3.0	4.9	11.6	46	58	
497F	Fayette-Dubuque silt loams, 18 to 30 percent slopes	3.86	11.7%		2.1ft. (Lithic bedrock)	Well drained	Vle	80.0	2.2	23.2	1.4	2.4	8.5	16	5	

Soils data provided by USDA and NRCS.



Code	Soil Description	Acres	Percent of field	CSR2 Legend	Restrictive Layer	Soil Drainage	Non-Irr Class *c	*i Corn Bu	*i Alfalfa Tons	*i Soybeans Bu	*i Bluegrass Tons	*i Tall Grasses Tons	*i Water-Holding Inch	CSR2**	CSR	*n NC Ov	
497E	Fayette-Dubuque silt loams, 14 to 18 percent slopes	2.09	6.4%		2.1ft. (Lithic bedrock)	Well drained	Ive	80.0	2.2	23.2	1.4	2.4	8.5	32	5		
163E3	Fayette silty clay loam, 14 to 18 percent slopes, severely eroded	1.74	5.3%		> 6.5ft.	Well drained	Vle	129.6	3.6	37.6	2.3	3.9	11.4	29	45		
496B	Dorchester-Volney complex, 1 to 5 percent slopes	0.37	1.1%		> 6.5ft.	Moderately well drained	Ilw	80.0	2.2	23.2	1.4	2.4	9.1	50	25		
163D	Fayette silt loam, 9 to 14 percent slopes	0.07	0.2%		> 6.5ft.	Well drained	Ille	169.6	4.7	49.2	3.1	5.1	11.6	49	60		
Weighted Average								4.68	129.2	3.6	37.5	2.3	3.9	11.3	32.3	35.7	*

**IA has updated the CSR values for each county to CSR2.

*i Yield data provided by the ISPAID Database version 8.1.1 developed by IA State University.

*n: The aggregation method is "Weighted Average using all components"

*c: Using Capabilities Class Dominant Condition Aggregation Method