

2 Commercial Lots in Aragon, GA
0 Rome Hwy/Hwy 101
Aragon, GA 30104

\$295,000
2.100± Acres
Polk County



2 Commercial Lots in Aragon, GA

Aragon, GA / Polk County

SUMMARY

Address

0 Rome Hwy/Hwy 101

City, State Zip

Aragon, GA 30104

County

Polk County

Type

Commercial, Business Opportunity

Latitude / Longitude

34.0437 / -85.0604

Acreage

2.100

Price

\$295,000

Property Website

<https://www.garrettlandcompany.com/property/2-commercial-lots-in-aragon-ga-polk-georgia/90449/>



2 Commercial Lots in Aragon, GA

Aragon, GA / Polk County

PROPERTY DESCRIPTION

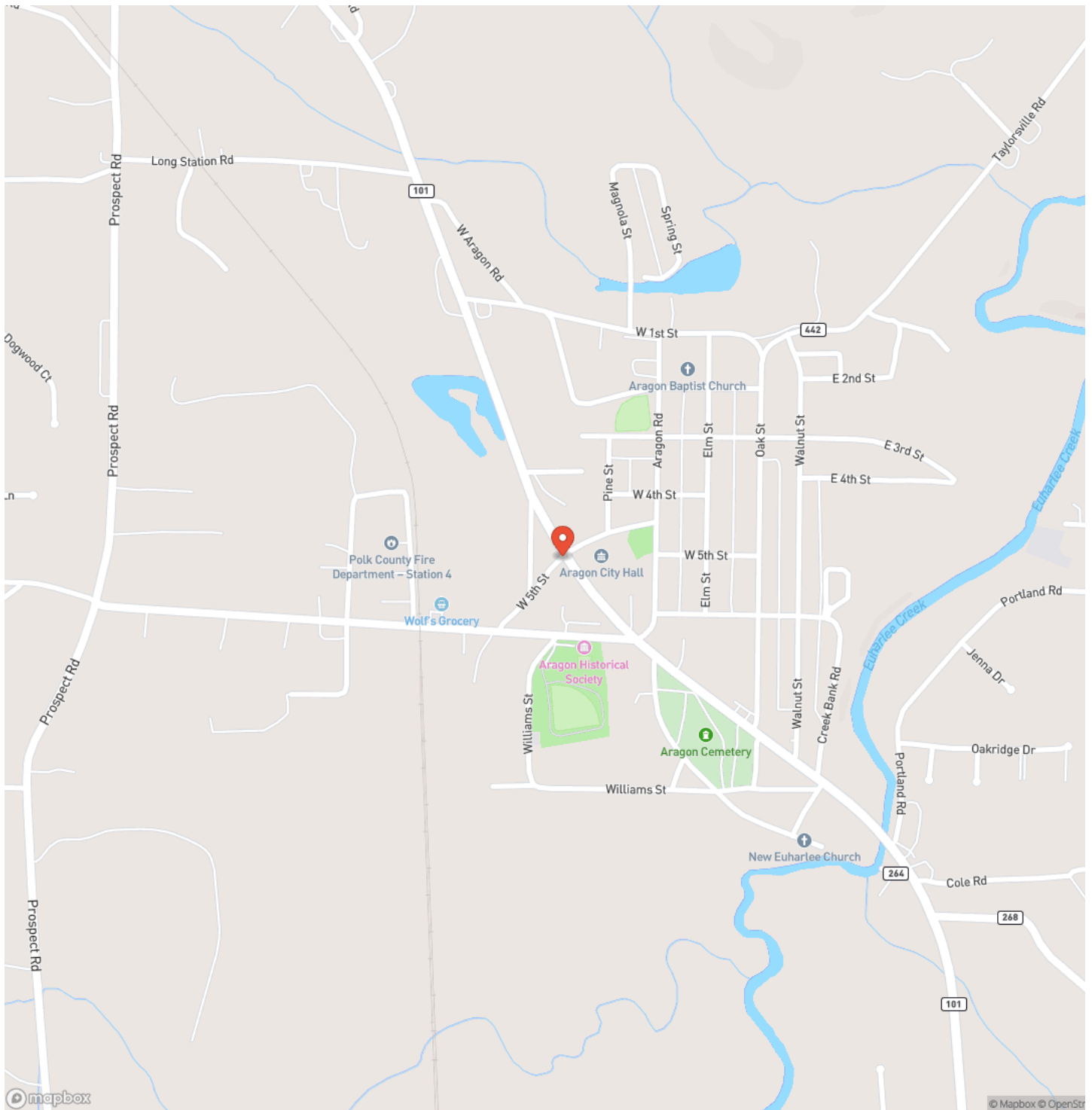
2 Commercial lots located on Rome Hwy/Hwy 101 in Aragon, GA. High visibility location and near other commercial businesses. Both lots are to be sold together and are across W 5th Street from each other. Parcel #A01-034 is just under 1 acre at 0.99 and parcel #A01-049 is 1.13 acres and ready for development. Zoned C-1 in the city of Aragon which includes a variety of uses, however please contact the City of Aragon zoning department ([770-684-6563](tel:770-684-6563)) to verify.



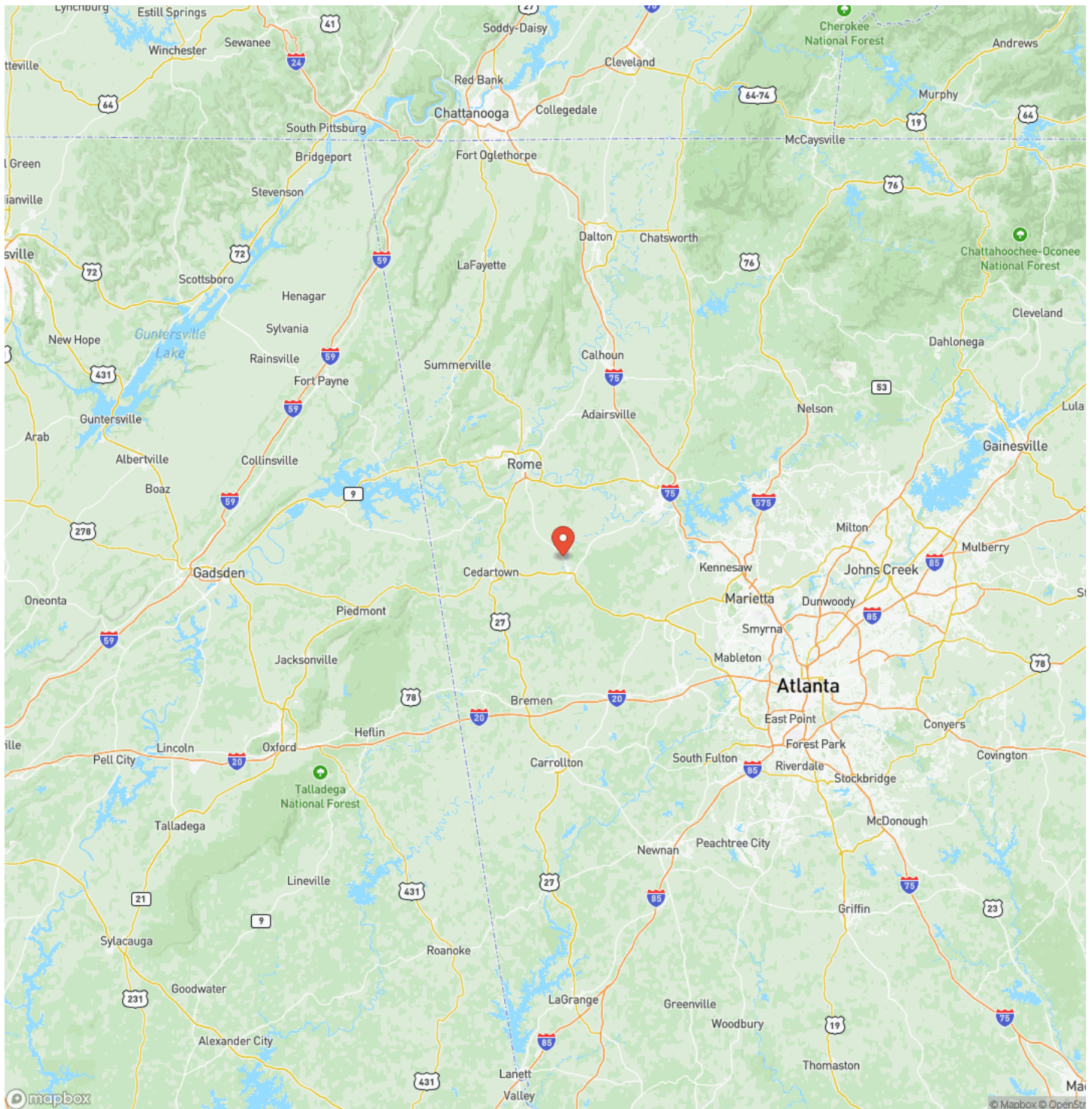
2 Commercial Lots in Aragon, GA
Aragon, GA / Polk County



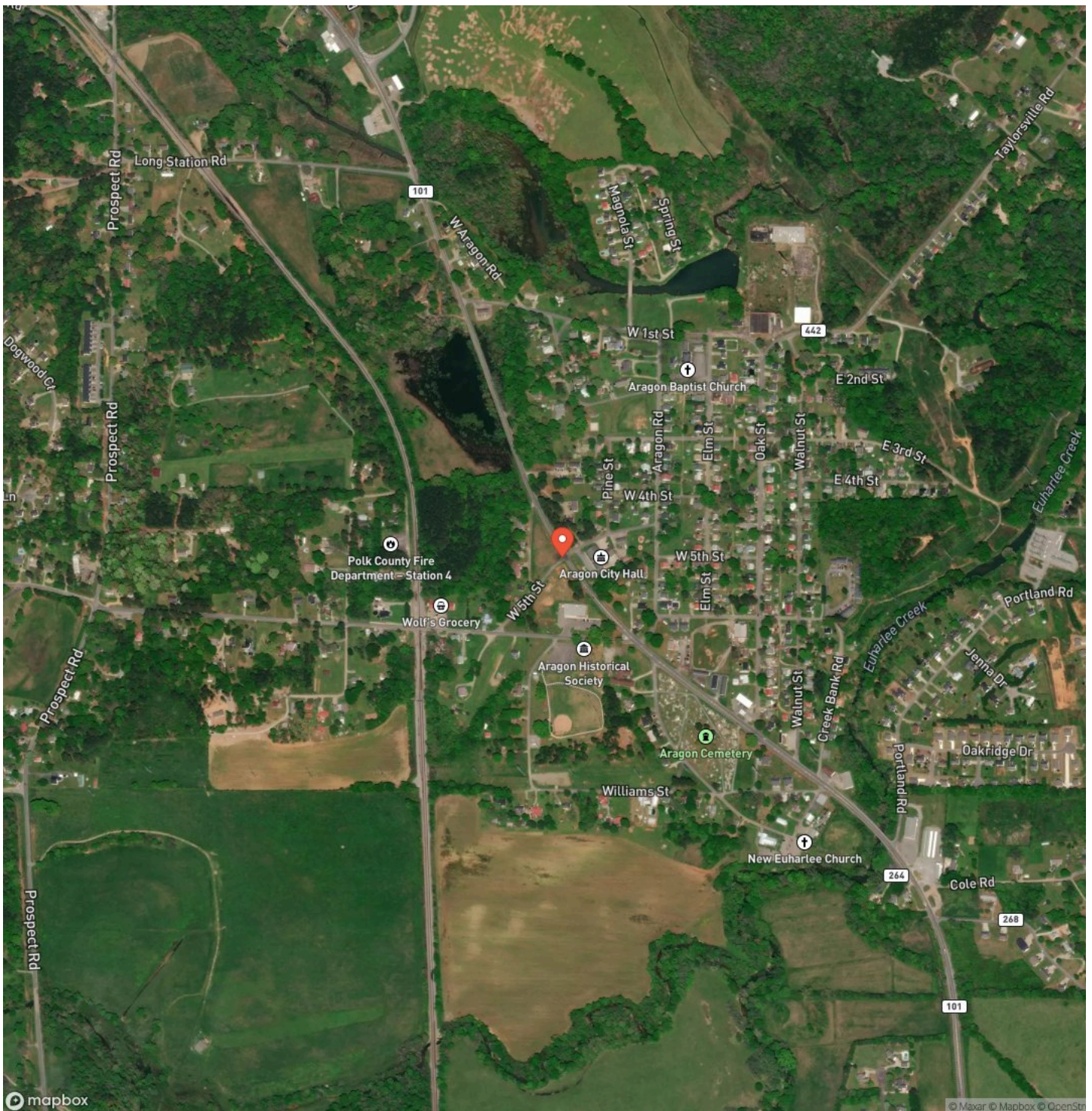
Locator Map



Locator Map



Satellite Map



2 Commercial Lots in Aragon, GA

Aragon, GA / Polk County

LISTING REPRESENTATIVE

For more information contact:



Representative

Mike Garrett

Mobile

(678) 540-4300

Office

(678) 540-4300

Email

mike@garrettlandco.com

Address

119 Felton Drive

City / State / Zip

NOTES

[illegible]

This image shows a blank sheet of white paper with horizontal ruling lines. The lines are evenly spaced and run across the width of the page. There are no margins, text, or other markings on the paper.



<https://www.garrettlandcompany.com/>

DISCLAIMERS

Information in this brochure is provided solely for information purposes and does not constitute an offer to sell or advertise real estate outside the states in which broker or agent licensed. The information presented has been obtained from sources deemed to be reliable, but is not guaranteed or warranted by the agent, broker, or the sellers of these properties. This offering is subject to errors, omissions, prior sale, price change, correction or withdrawal from the market without notice. All references to age, square footage, income, expenses, acreage, carrying capacity, and land classification, etc. are approximate. Prospective buyers are chargeable with and expected to conduct their own independent investigation of the information and the property and to rely only on those results. Sellers reserve the right to accept or reject any and all offers without liability to any buyer or cooperating broker.

Maps are provided for illustration purposes only, the accuracy is not warranted. Parcels on interactive maps are not adjusted to match aerial backgrounds. This information is for reference purposes only and is not a legal document. Data maps contain errors. The seller and seller's agent are making known to all potential buyers that there may be variations between the location of the existing fence lines and the legal description of the deeded property. Seller and seller's agent make no warranties with regard to the location of the fence lines in relationship to the deeded property lines, nor does the Seller make any warranties or representations with regard to the specific acreage contained within the fenced property lines. Seller is selling the property in an "as is" condition, which includes the location of the fences as they exist. Boundaries shown on the accompanying maps are approximate, based on county parcel data. The maps are not to scale. The accuracy of the maps is not guaranteed. Prospective buyers are encouraged to verify fence lines, deeded property lines and acreages using a licensed surveyor at their own expense.



Garrett Land Company
119 Felton Dr
Rockmart, GA 30153
(678) 628-3301
<https://www.garrettlandcompany.com/>

