



## **K19-Bassett Farms**

**Farm**

**Riggs 80**

**Area: 75.45 ac**  
**Report Date: 6/17/2022**  
**Lat: 41.96864°N**  
**Lon: 093.70066°W**

REPORT NUMBER

22-166-0145

ACCOUNT 28482

TODAY'S DATE Jun 17, 2022

PAGE 1/1



13611 B Street • Omaha, Nebraska 68144-3693 • (402) 334-7770

COPY TO 16400

ADVANCED CROP MANAGEMENT MASTER ACCOUNT

ACM/KEY COOP CORY DE JONG 22703 600TH AVENUE

IDENTIFICATION 2951170

K19-BASSETT FARMS

RIGGS 80

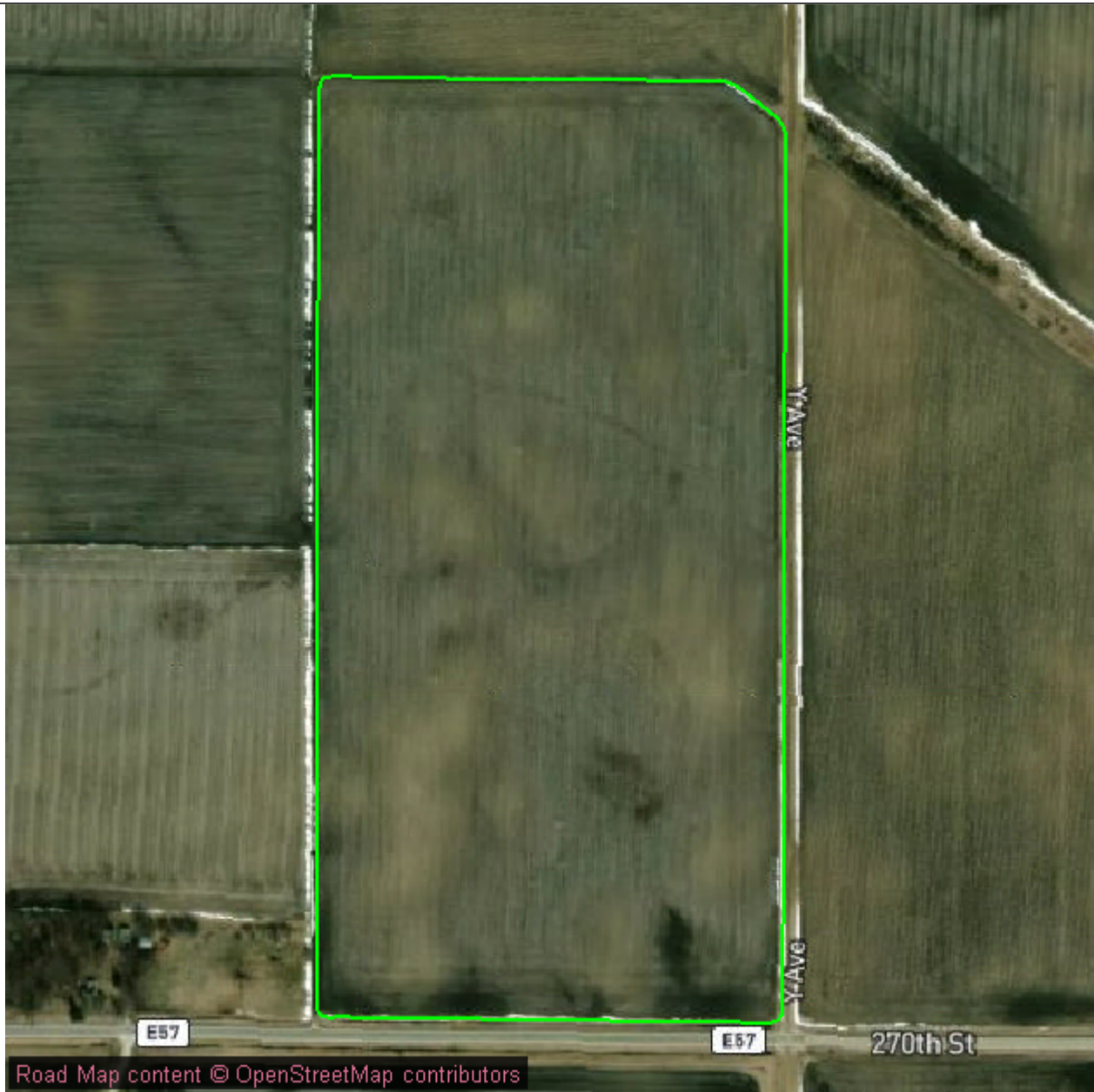
NEVADA IA 50201

Table with columns: Lab Number, Sample ID, OM, Phosphorus (P1, P2, Bic), K, Mg, Ca, Na, pH, Buff index, CEC, Percent Base (K, Mg, Ca, H, Na), Nitrate (ppm, Surface lbs/A, depth), Total lbs/A, S, Zn, Mn, Fe, Cu, B, Excess Lime Rate, Excess Soluble Salts, NH3-N, Color, MP3.

The above analytical results apply only to the sample(s) submitted. Samples are retained a maximum of 30 days.

Our reports and letters are for the exclusive and confidential use of our clients and may not be reproduced in whole or in part, nor may any reference be made to the work, the results, or the company in any advertising, news release, or other public announcements without our prior written authorization.

# Field Boundary



Grower: K19-Bassett Farms  
Farm: Farm  
Field: Riggs 80  
Area: 75.45 ac



One in = 458 feet  
0 207 414 622 829 1036

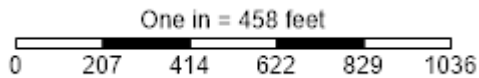
— Riggs 80 (75.45 ac)



# Soil Type - SSURGO



Grower: K19-Bassett Farms  
 Farm: Farm  
 Field: Riggs 80  
 Area: 75.45 ac



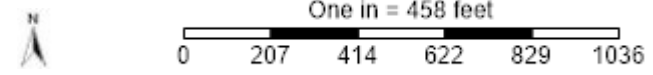
Soil Type - SSURGO	
<span style="color: green;">—</span>	Field Boundary
<span style="color: brown;">■</span>	Canisteo clay loam, Bemis moraine, 0 to 2 percent slopes (32.2 ac ) (42.7%)
<span style="color: yellow;">■</span>	Clarion loam, Bemis moraine, 2 to 6 percent slopes (30.1 ac ) (39.9%)
<span style="color: olive;">■</span>	Clarion loam, Bemis moraine, 6 to 10 percent slopes (1.8 ac ) (2.3%)
<span style="color: orange;">■</span>	Harps clay loam, Bemis moraine, 0 to 2 percent slopes (2.6 ac ) (3.5%)
<span style="color: tan;">■</span>	Nicollet loam, 1 to 3 percent slopes (5.9 ac ) (7.9%)
<span style="color: darkorange;">■</span>	Okoboji mucky silt loam, 0 to 1 percent slopes (1.7 ac ) (2.3%)
<span style="color: lightyellow;">■</span>	Palms muck, ponded, 0 to 1 percent slopes (0.1 ac ) (0.1%)
<span style="color: green;">■</span>	Webster clay loam, Bemis moraine, 0 to 2 percent slopes (1.0 ac ) (1.4%)



# Soil Sample Points



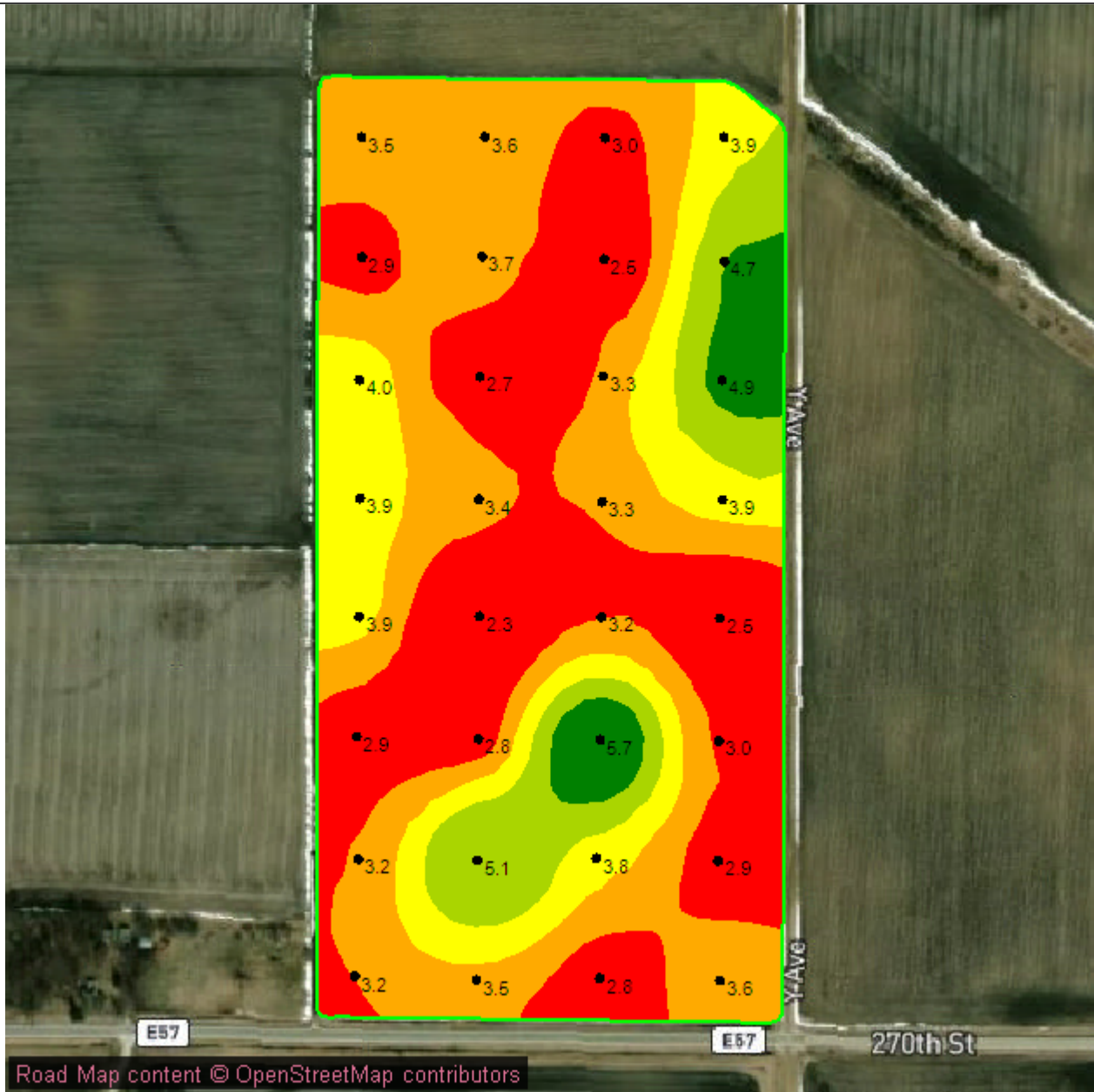
Grower: K19-Bassett Farms  
Farm: Farm  
Field: Riggs 80  
Area: 75.45 ac



- Field Boundary
- Soil Sample Points

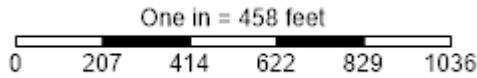


# OM



Grower: K19-Bassett Farms  
 Farm: Farm  
 Field: Riggs 80  
 Area: 75.45 ac

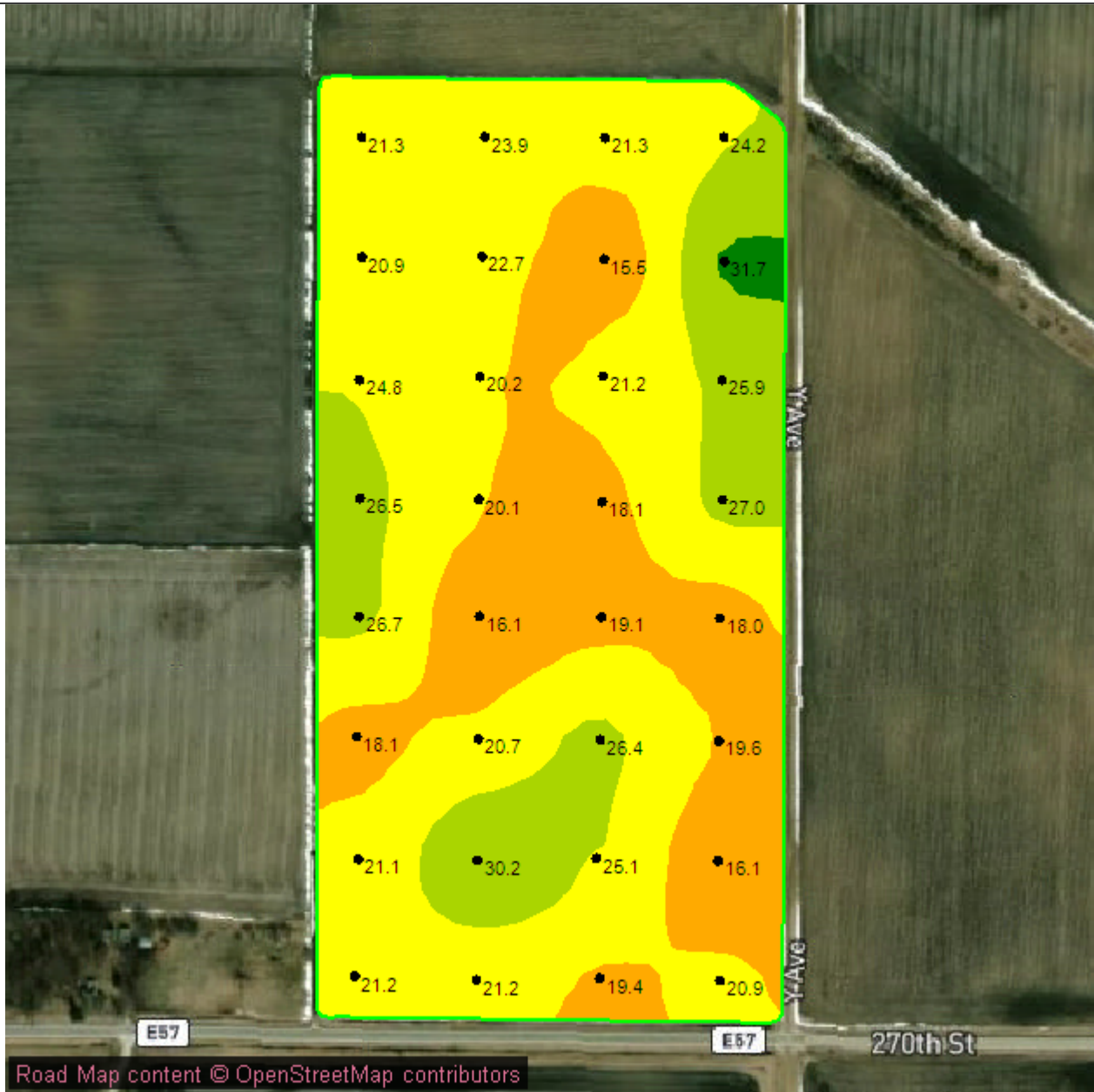
Season: 2022  
 Min: 2.43 Percent  
 Avg: 3.49 Percent  
 Max: 5.66 Percent



Field Boundary	
OM Percent	
<span style="color: red;">■</span>	2.4 - 3.2 (26.9 ac) (35.6%)
<span style="color: orange;">■</span>	3.2 - 3.6 (26.5 ac) (35.2%)
<span style="color: yellow;">■</span>	3.6 - 4.1 (11.8 ac) (15.7%)
<span style="color: lightgreen;">■</span>	4.1 - 4.6 (6.1 ac) (8.1%)
<span style="color: green;">■</span>	4.6 - 5.7 (4.1 ac) (5.4%)

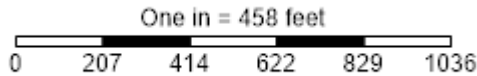


# CEC



Grower: K19-Bassett Farms  
 Farm: Farm  
 Field: Riggs 80  
 Area: 75.45 ac

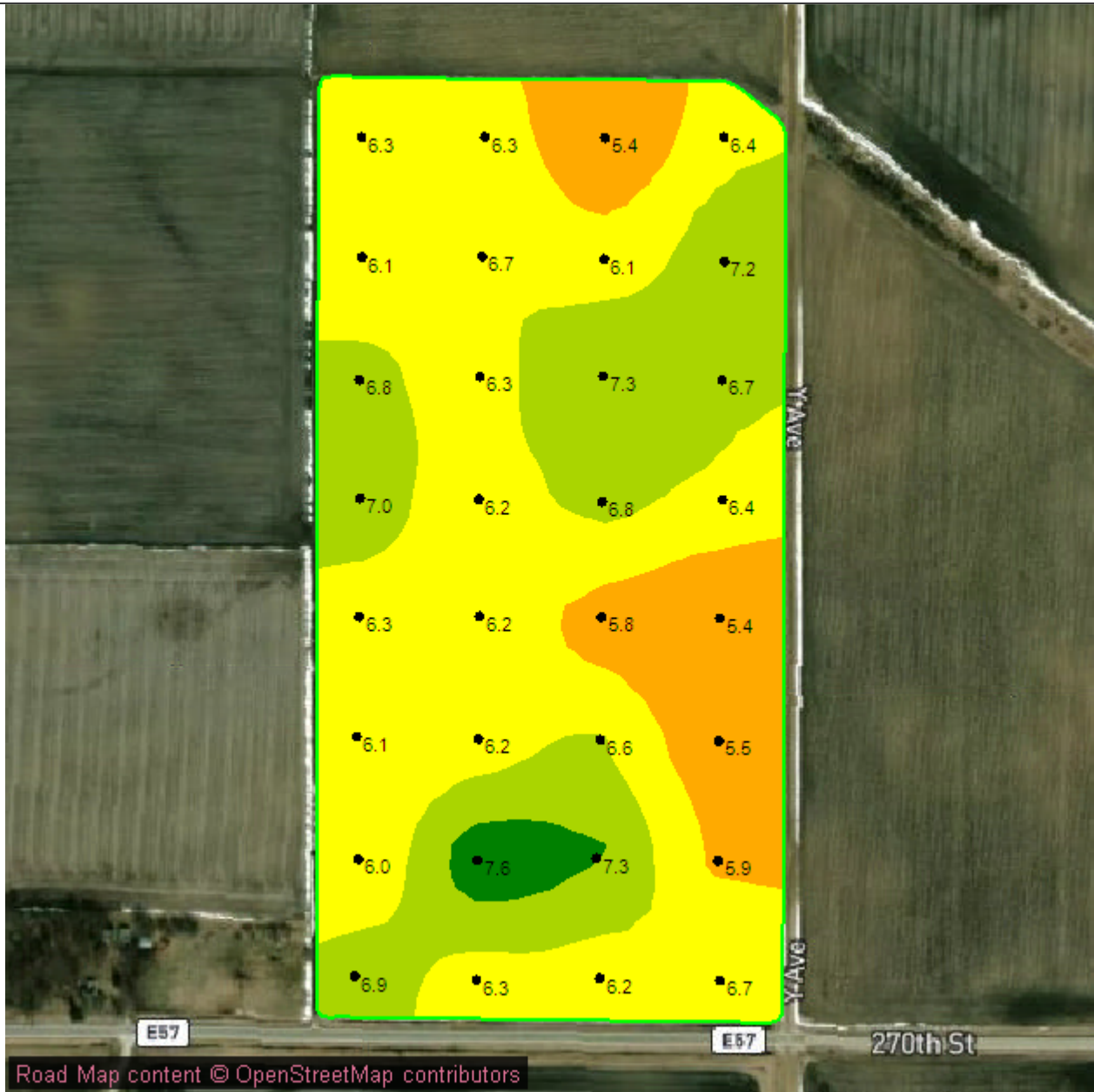
Season: 2022  
 Min: 16.18 meq/100 g  
 Avg: 22.00 meq/100 g  
 Max: 31.06 meq/100 g



Field Boundary	
CEC meq/100 g	
<span style="color: red;">■</span>	1 -15 (0.0 ac ) (0.0%)
<span style="color: orange;">■</span>	15 - 20 (20.8 ac ) (27.5%)
<span style="color: yellow;">■</span>	20 - 25 (41.9 ac ) (55.5%)
<span style="color: lightgreen;">■</span>	25 - 30 (12.3 ac ) (16.3%)
<span style="color: darkgreen;">■</span>	30 (0.5 ac ) (0.7%)

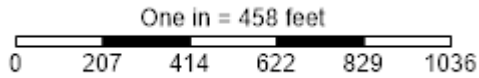


# pH



Grower: K19-Bassett Farms  
 Farm: Farm  
 Field: Riggs 80  
 Area: 75.45 ac

Season: 2022  
 Min: 5.41  
 Avg: 6.40  
 Max: 7.48



<span style="color: green;">—</span>	Field Boundary
<span style="color: red;">■</span>	pH
<span style="color: orange;">■</span>	0 - 5.2 (0.0 ac ) (0.0%)
<span style="color: yellow;">■</span>	5.2 - 6 (10.7 ac ) (14.2%)
<span style="color: lightgreen;">■</span>	6 - 6.6 (42.0 ac ) (55.7%)
<span style="color: green;">■</span>	6.6 - 7.2 (20.8 ac ) (27.6%)
<span style="color: darkgreen;">■</span>	7.2 + (1.9 ac ) (2.5%)

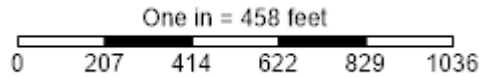


# BpH



Grower: K19-Bassett Farms  
 Farm: Farm  
 Field: Riggs 80  
 Area: 75.45 ac

Season: 2022  
 Min: 6.42  
 Avg: 6.80  
 Max: 7.10



Field Boundary	
BpH	
0 - 5.2 (0.0 ac) (0.0%)	
5.2 - 6 (0.0 ac) (0.0%)	
6 - 6.6 (7.3 ac) (9.7%)	
6.6 - 7.2 (68.2 ac) (90.3%)	
7.2 + (0.0 ac) (0.0%)	

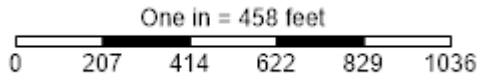


# P Bray 1



Grower: K19-Bassett Farms  
 Farm: Farm  
 Field: Riggs 80  
 Area: 75.45 ac

Season: 2022  
 Min: 12.13 ppm  
 Avg: 30.83 ppm  
 Max: 67.57 ppm



<span style="color: green;">—</span>	Field Boundary
<span style="color: red;">■</span>	P Bray 1 ppm
<span style="color: orange;">■</span>	0 - 8 (0.0 ac ) (0.0%)
<span style="color: yellow;">■</span>	8 - 17 (1.5 ac ) (2.0%)
<span style="color: lightgreen;">■</span>	17 - 26 (22.8 ac ) (30.2%)
<span style="color: limegreen;">■</span>	26 - 39 (38.3 ac ) (50.8%)
<span style="color: darkgreen;">■</span>	39 + (12.8 ac ) (16.9%)



# K



Road Map content © OpenStreetMap contributors

Grower: K19-Bassett Farms  
 Farm: Farm  
 Field: Riggs 80  
 Area: 75.45 ac

Season: 2022  
 Min: 150.50 ppm  
 Avg: 214.58 ppm  
 Max: 382.52 ppm



One in = 458 feet  
 0 207 414 622 829 1036

Field Boundary	
K ppm	
0 - 100 (0.0 ac) (0.0%)	
100 - 140 (0.0 ac) (0.0%)	
140 - 180 (14.8 ac) (19.6%)	
180 - 220 (30.6 ac) (40.6%)	
220 + (30.1 ac) (39.9%)	



