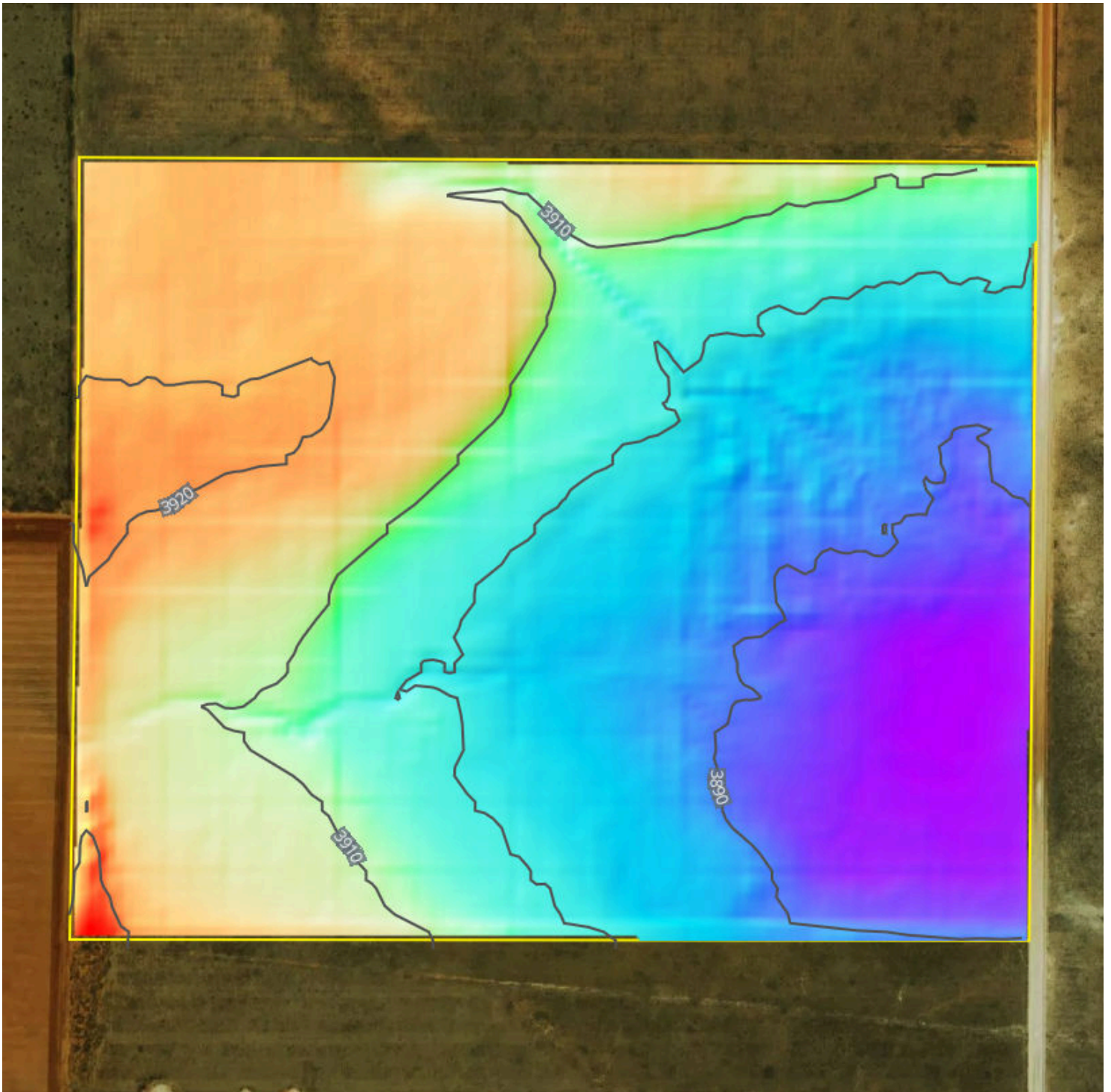


Elevation



Cochran County, TX

201.6 Acres, 1 Boundary



3,884.9 feet

3,927.4 feet

Source: USGS 3 Meter Dem

Interval: 10 feet

Range: 42.5 feet

Min: 3884.9 feet

Max: 3927.4 feet

Slope: 1.6%

Min: 0%

Max: 9.5%