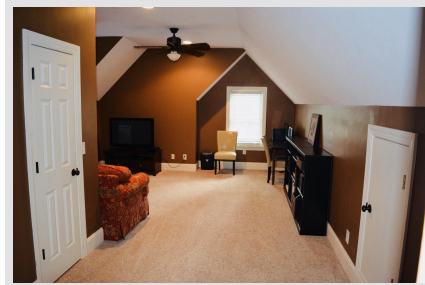


0 Acres - Lexington County, South Carolina

Tract A995 House (SOLD)



Acreage

1.33 acres with Home

General Description

Beautiful craftsman exterior on this spacious 3400 square foot custom home with upgraded trim package on the interior. Well designed layout with a master suite on the first floor and 4 additional bedrooms upstairs. The kitchen is set up for the chef in you with a gas range and a wall mounted double convection oven. The granite tops on the cabinets and island allow for maximum space as well as beauty. The kitchen has an eat in area for those quick meals and a formal dining room for more entertainment options. The great room has a two-story vaulted ceiling opening off a wide entry foyer. The entertainment room upstairs offers great opportunity for movie buffs and gamers. Close-in to the Town of Lexington in the award-winning Lexington School District One. Hundred plus year-old oak trees on the 1.33-acre lot. Located across the street from Lake Murray.

Location / Directions:

Directions: Take Highway 378 East from the Town of Lexington. Turn right on Counts Ferry. Turn right on Hendrix Landing Rd. Turn Right on Rocky Cove Rd. 139 Rocky Cove Rd. is on the right.

Agent:

Richard Robertson
803-957-9503

Aerial Map 

A995 - Home
1.3 Acres


Advance Land and Timber, LLC
Richard Robinson
(803) 447-9000
rob@advancelandandtimber.com
<http://advancelandandtimber.com/>

