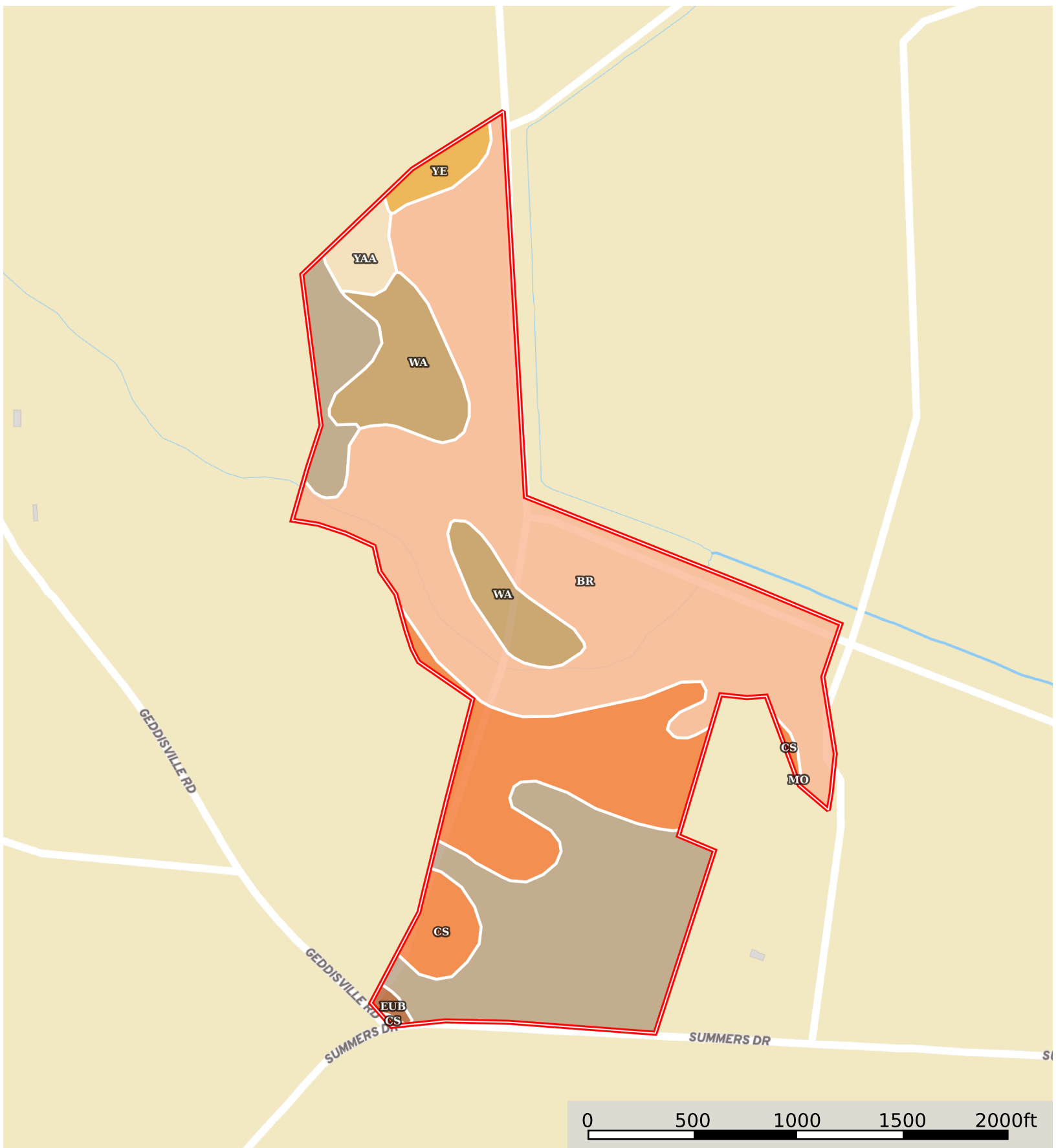


CAN04B - SC Dorchester Co - Wood Duck Hole
Dorchester County, South Carolina, 120 AC +/-



TM # 184-00-00-032.000

SOIL CODE	SOIL DESCRIPTION	ACRES	%	CPI	NCCPI	CAP
Br	Brookman clay loam, frequently flooded	53.41	44.87	0	45	6w
Mo	Mouzon fine sandy loam, occasionally flooded	29.55	24.82	0	41	6w
Cs	Coosaw loamy fine sand	20.02	16.82	0	39	3w
Wa	Wahee fine sandy loam	11.37	9.55	0	48	2w
YaA	Yauhannah loamy fine sand, 0 to 2 percent slopes	2.31	1.94	0	45	2w
Ye	Yemassee fine sandy loam	1.98	1.66	0	48	2w
EuB	Eulonia fine sandy loam, 2 to 6 percent slopes	0.42	0.35	0	51	2e
TOTALS		119.06(*)	100%	-	43.36	4.96

(*) Total acres may differ in the second decimal compared to the sum of each acreage soil. This is due to a round error because we only show the acres of each soil with two decimal.

