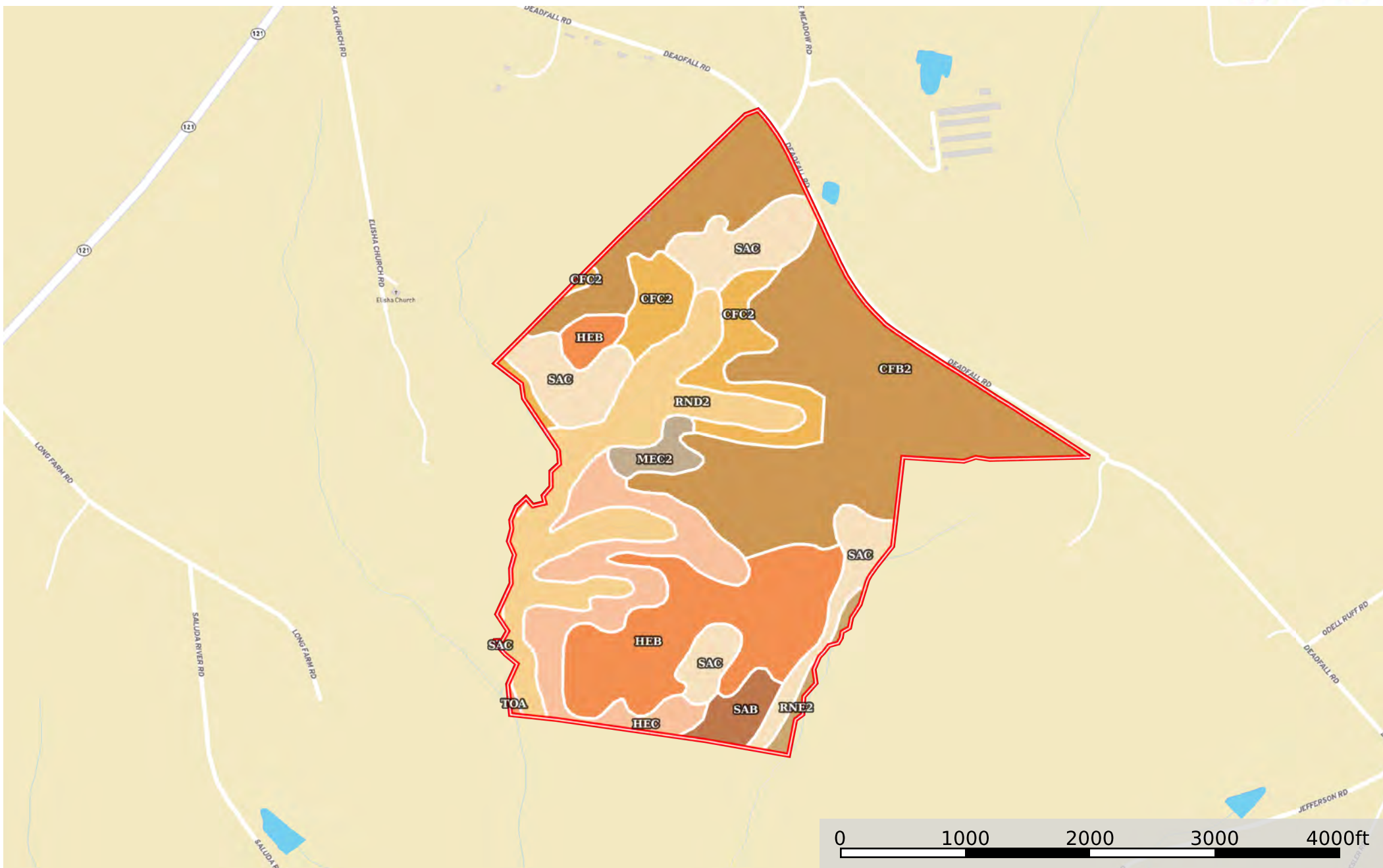


C140 SC Newberry-NC&HB

Newberry County, South Carolina, 294 AC +/-



Boundary

|  Boundary 284.18 ac

SOIL CODE	SOIL DESCRIPTION	ACRES	%	CPI	NCCPI	CAP
CfB2	Cecil sandy clay loam, 2 to 6 percent slopes, moderately eroded	101.15	35.59	0	71	3e
HeB	Helena sandy loam, 2 to 6 percent slopes	43.06	15.15	0	66	2e
RnD2	Rion sandy loam, 10 to 15 percent slopes, moderately eroded	39.54	13.91	0	68	6e
SaC	Santuc loamy coarse sand, 6 to 10 percent slopes	35.39	12.45	0	61	3e
HeC	Helena sandy loam, 6 to 10 percent slopes	28.88	10.16	0	65	3e
CfC2	Cecil sandy clay loam, 6 to 10 percent slopes, moderately eroded	22.63	7.96	0	69	4e
SaB	Santuc loamy coarse sand, 2 to 6 percent slopes	5.84	2.05	0	62	2e
MeC2	Mecklenburg sandy clay loam, 6 to 10 percent slopes, moderately eroded	4.58	1.61	0	64	4e
RnE2	Rion sandy loam, 15 to 25 percent slopes, moderately eroded	2.75	0.97	0	58	7e
ToA	Toccoa sandy loam, 0 to 3 percent slopes, frequently flooded	0.36	0.13	0	41	3w
TOTALS		284.18(*)	100%	-	67.34	3.38









(*) Total acres may differ in the second decimal compared to the sum of each acreage soil. This is due to a round error because we only show the acres of each soil with two decimal.

Capability Legend

Increased Limitations and Hazards

Decreased Adaptability and Freedom of Choice Users

Land, Capability

								
	1	2	3	4	5	6	7	8
'Wild Life'	•	•	•	•	•	•	•	•
Forestry	•	•	•	•	•	•	•	
Limited	•	•	•	•	•	•	•	
Moderate	•	•	•	•	•	•		
Intense	•	•	•	•	•			
Limited	•	•	•	•				
Moderate	•	•	•					
Intense	•	•						
Very Intense	•							

Grazing Cultivation

(c) climatic limitations (e) susceptibility to erosion

(s) soil limitations within the rooting zone (w) excess of water