
Pearl Ranch

662 +/- Acres | Ellis County, TX

Listed at \$16,900,000



Pearl Ranch

662 +/- Acres | Ellis County, TX

Description:

The Pearl Ranch is a 662± acre private estate in Maypearl, just 40 minutes south of the Dallas–Fort Worth Metroplex. Offered fully turnkey, the ranch combines refined luxury living with the rugged beauty of North Texas, anchored by a 7,000± sq. ft. custom main residence overlooking a pristine trophy bass lake. Expansive outdoor living spaces, an infinity-edge pool, and panoramic views highlight the property's dramatic setting.

The ranch also features multiple luxury residences, a recreation center with fitness and racquetball facilities, a 10,000± sq. ft. event venue, an entertainment pavilion, and premier equestrian amenities. Seven lakes and ponds, scenic riding trails, and productive pastures provide both beauty and functional versatility, while a high-fenced wildlife area offers exceptional hunting for whitetail, elk, and exotic game. With its combination of privacy, luxury, recreation, and close proximity to the Metroplex, Pearl Ranch represents one of the finest turnkey legacy properties in North Texas.



Pearl Ranch

662 +/- Acres | Ellis County, TX

Improvements:

The ranch features a 7,000± sq. ft. main residence with 5 bedrooms, 5 full and 2 half bathrooms, a chef's kitchen with top-of-the-line appliances, wine cellar, cigar room, and fully integrated smart-home automation. Expansive outdoor living spaces include an infinity-edge pool, hot tub, grill station, and fire pit, all framing breathtaking views of the lake and surrounding landscape. Supporting improvements include a 3,800± sq. ft. recreation center with fitness and racquetball facilities, a 2,400± sq. ft. entertainment pavilion with open-air conversion and climate-controlled storage, and a 10,000± sq. ft. luxury event venue with a commercial kitchen. Additional residential spaces include a lakeside 3-bedroom bass cabin and a foreman's home, while functional ranch infrastructure comprises a 100' x 100' hay and equipment barn, an eight-stall equestrian barn, and a fully equipped game processing station. Together, these improvements create a fully turnkey ranch designed for luxury living, entertainment, equestrian pursuits, and recreational or income-producing opportunities.



Pearl Ranch

662 +/- Acres | Ellis County, TX

Location:

The Pearl Ranch is ideally positioned in the western portion of Ellis County, just under three miles northwest of the town of Maypearl. Accessed through a private entrance off Ozro Road, the property offers both privacy and a sense of arrival befitting an estate of this caliber. Despite its secluded setting, the ranch remains exceptionally convenient to major Texas cities. The property lies approximately 40 miles south of both Dallas and Fort Worth, and about 65 miles north of Waco, placing it within comfortable driving distance of the Dallas–Fort Worth Metroplex. This strategic location allows owners to enjoy the tranquility and privacy of a large Texas ranch while maintaining convenient access to business, travel, dining, and entertainment.



Water

The Pearl Ranch features seven bodies of water, including a 5-acre trophy bass lake with a concrete-reinforced dam, covered boathouse, and boat ramp. Additional lakes and ponds—including a 4-acre and 2-acre lake—are spread across the property, providing water for wildlife, livestock, and recreation. Seasonal wetlands along Boggy Branch and Armstrong Creek support waterfowl, while seven water wells supply the homes and irrigated landscaping. Together, these natural and developed water resources enhance fishing, wildlife habitat, outdoor recreation, and the ranch's overall versatility. The thoughtful distribution and management of water throughout the property ensure year-round access and sustainability for all uses.

Pearl Ranch

662 +/- Acres | Ellis County, TX

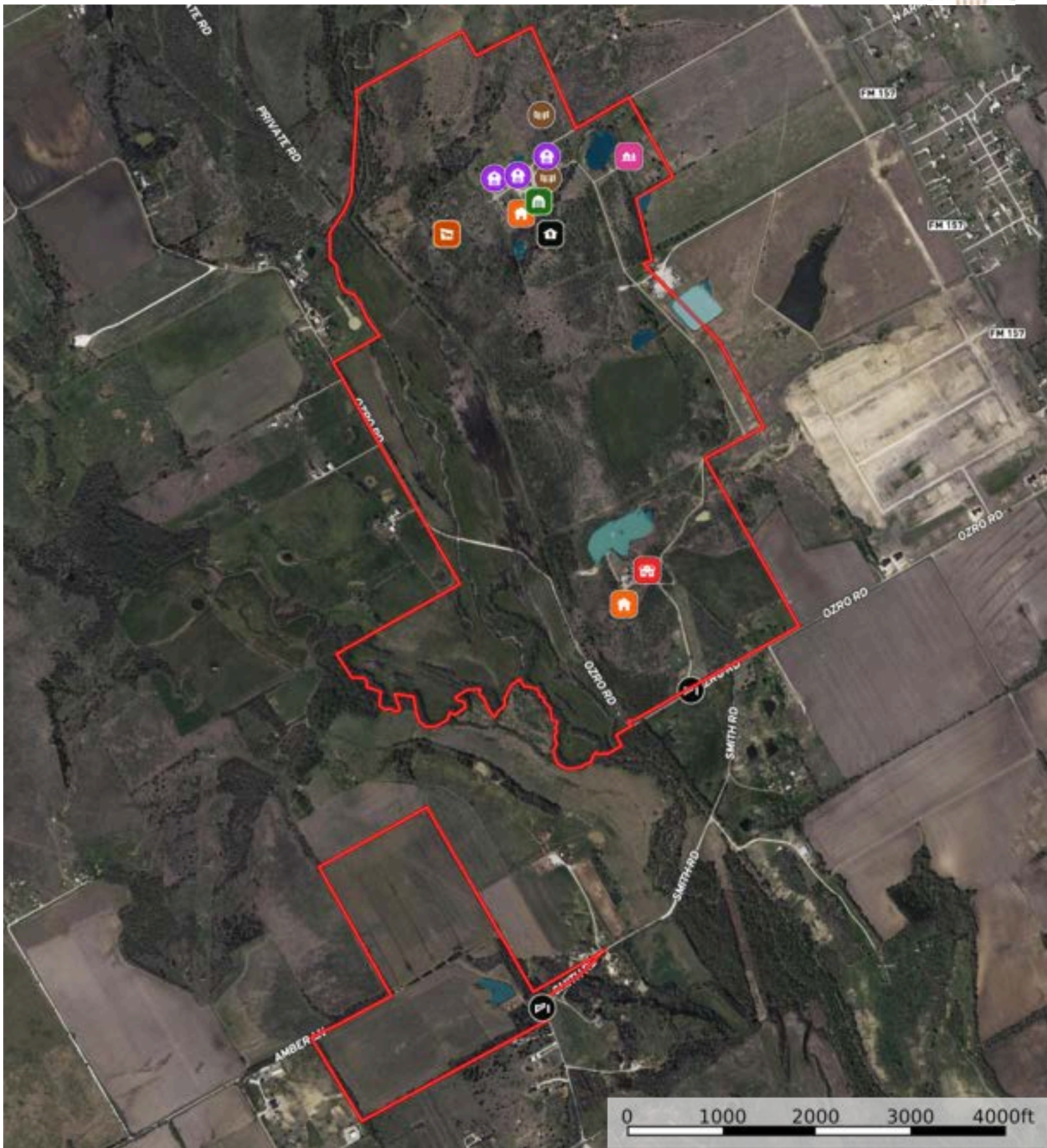
Land & topography:

The Pearl Ranch encompasses 662± acres of rolling terrain with approximately 90 feet of elevation change, offering dramatic viewpoints across the property and the surrounding countryside. The landscape features a diverse mix of improved pastures, densely wooded areas with native trees and brush, scenic riding trails, and productive agricultural fields. Well-maintained interior roads provide easy access throughout the ranch, with four-wheel drive recommended for some of the more rugged sections. This combination of varied terrain, fertile pastures, and native habitat supports recreation, hunting, equestrian activities, and agricultural use, creating a versatile and visually striking property.

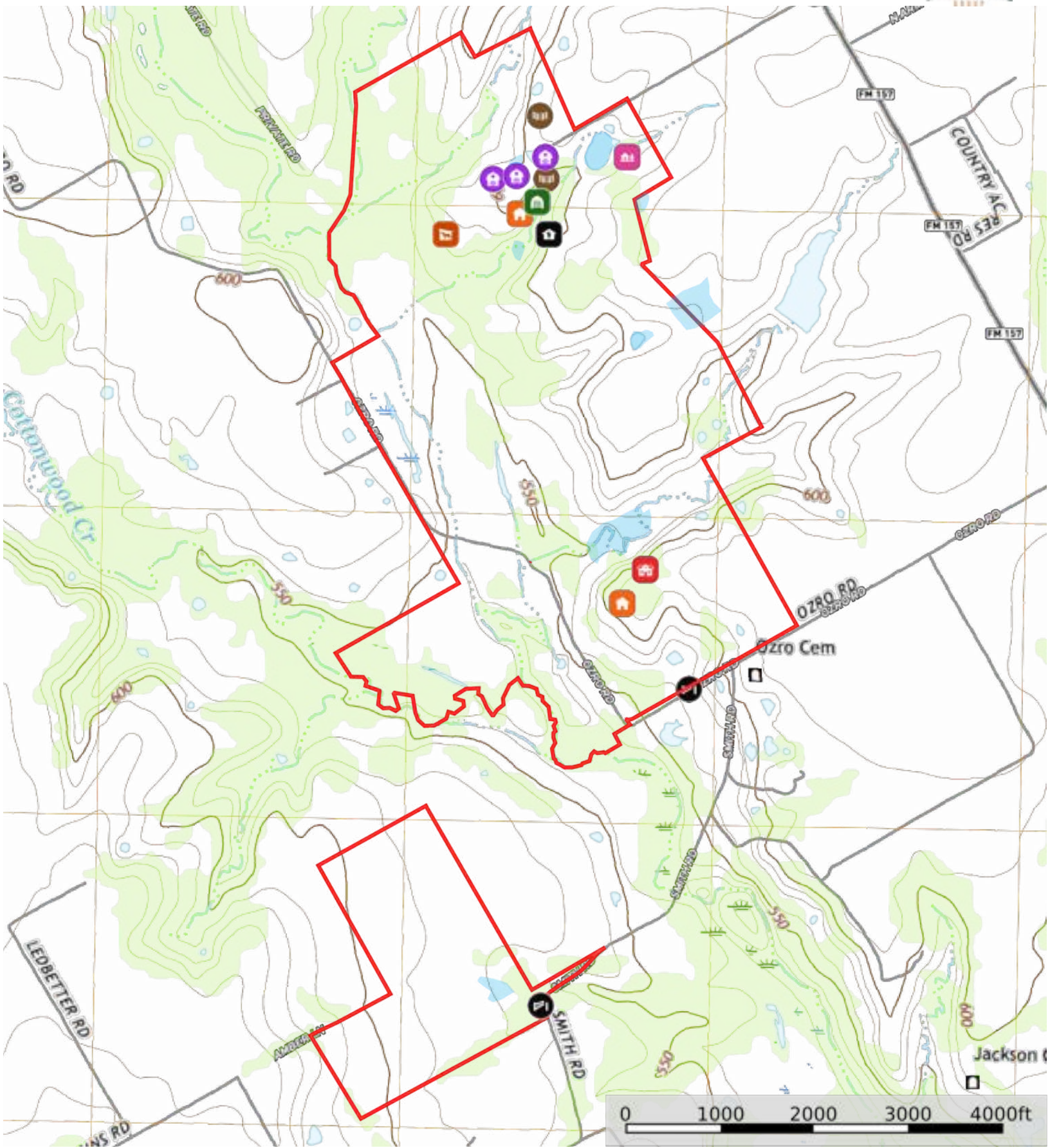
Wildlife:

The Pearl Ranch offers exceptional hunting and wildlife opportunities across its diverse terrain. A 225± acre high-fenced area supports whitetail deer, elk, oryx, fallow deer, and blackbuck antelope, while the broader ranch provides habitat for dove, turkey, duck, and hogs. Seasonal wetlands and a dedicated 18± acre sunflower field enhance forage and attract wildlife, making the property ideal for hunting, wildlife viewing, and outdoor recreation.





- Shed / Shack
- House
- Barn
- Cabin
- Horse Stall
- Foreman's House
- Gate
- Pens
- Main House
- Pond / Tank
- Boundary



- Shed / Shack
- House
- Barn
- Cabin
- Horse Stall
- Foreman's House
- Gate
- Pens
- Main House
- Pond / Tank
- Boundary

Pearl Ranch

662 +/- Acres | Ellis County, TX

Listed at \$16,900,000



Tyler Thomas

TT Ranch Group agent

Email: tyler@ttranchgroup.com

Mobile: (214) 718-2800

