

Lodge Creek Ranch  
3377 Lodge Creek Rd  
Henrietta, TX 76310

**\$995,000**  
80± Acres  
Clay County



**Lodge Creek Ranch**  
**Henrietta, TX / Clay County**

---

**SUMMARY**

**Address**

3377 Lodge Creek Rd

**City, State Zip**

Henrietta, TX 76310

**County**

Clay County

**Type**

Farms, Hunting Land, Ranches, Recreational Land

**Latitude / Longitude**

33.495752 / -98.314751

**Acreage**

80

**Price**

\$995,000

**Property Website**

<https://ttranchgroup.com/property/lodge-creek-ranch-clay-texas/103627/>



## Lodge Creek Ranch Henrietta, TX / Clay County

---

### **PROPERTY DESCRIPTION**

Lodge Creek Ranch is a well-improved, highly functional 80-acre property in Clay County offering a strong combination of comfortable living, quality improvements, and diverse land just outside of Henrietta. Whether you're looking to run livestock, create a weekend retreat or family compound, or establish a full-time rural homestead, this property is ready to enjoy from day one.

### **Ranch Features**

The property is thoughtfully set up for both residential and agricultural use. A 1,720 sq ft, 4-bedroom, 2-bathroom, ranch-style rock home with screened-in porches provides comfortable living, complemented by separate guest quarters for additional space for visitors. Improvements include a 60x60 shop with electricity and equipment apron, a 20x30 shop, and a 25x25 storage building, offering ample room for equipment, tools, and projects. A private water well with storage tank services the property, and pipe livestock pens are already in place to support cattle operations. The land features a mix of native grass pasture and heavy oak timber, along with a pond providing surface water. Easy access is available via Lodge Creek Road frontage.

### **Topography**

With approximately 50 feet of elevation change, the terrain rolls gently across the property, adding visual character without complicating operations. The natural variation between open ground and wooded draws creates a landscape that feels lived-in and purposeful, with room for scenic build sites and a genuine sense of privacy from the road.

### **The Land**

The 80± acres strike a nice balance between productive open ground and quality cover. Native grass pasture supports solid grazing potential, while mature oak timber provides shade, shelter, and the kind of wildlife habitat that makes a place worth sitting still in. A pond anchors the property with reliable surface water, and the overall layout is clean and easy to manage. An agricultural exemption is currently in place, keeping property taxes low.

### **Location**

Situated on Lodge Creek Road in southern Clay County, the ranch sits just far enough outside of Henrietta to offer true rural seclusion. Minutes from the Jack County line, the property is approximately 20 miles from Wichita Falls and 35 miles from Jacksboro. Convenient access to US-287 & US-281 keeps regional amenities well within reach without compromising the open, rural character of the place.

### **Minerals**

None owned.

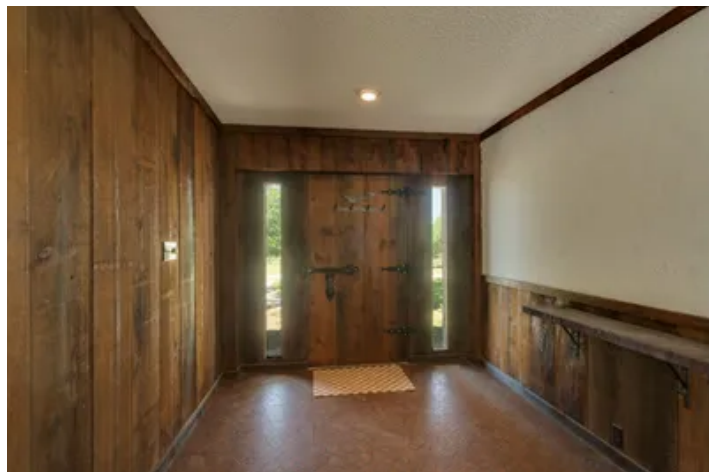
### **Conclusion**

Lodge Creek Ranch brings together the right mix of improvements, usability, and setting, making it an easy fit for a range of buyers. Whether you're looking for a weekend retreat or a full-time place in North Texas, it's a property you can step into and enjoy from day one.

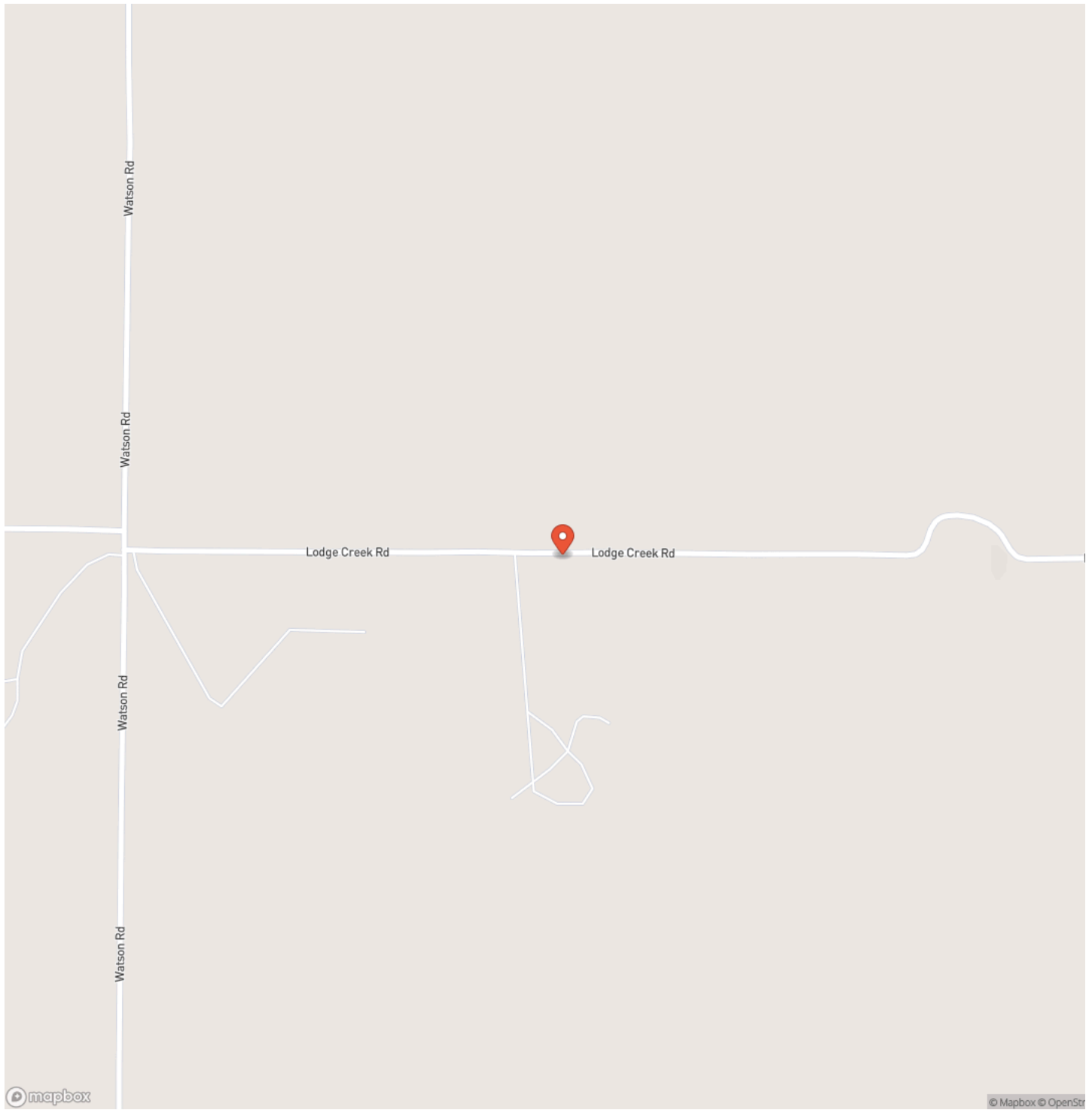
Additional acreage available.



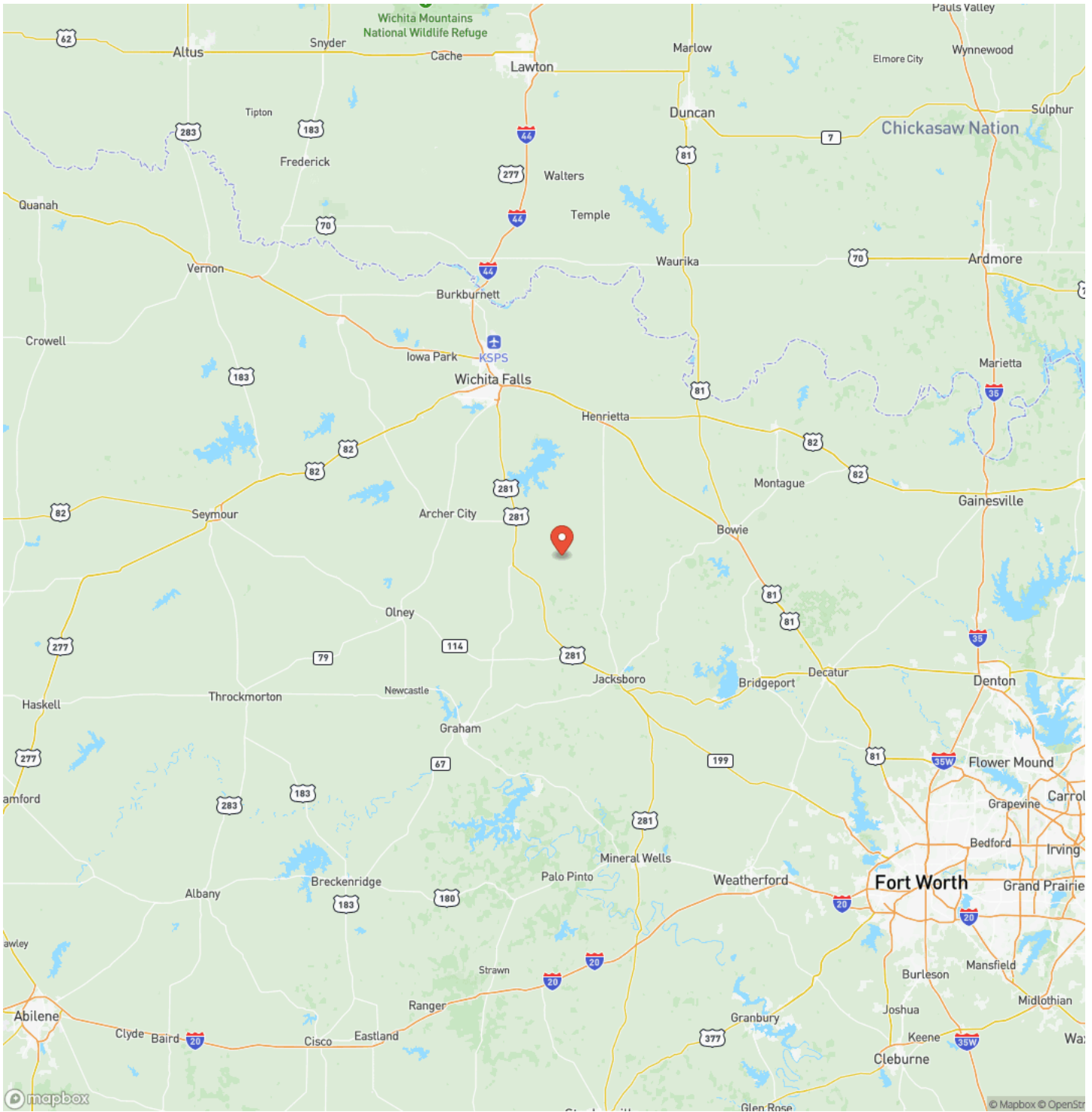
Lodge Creek Ranch  
Henrietta, TX / Clay County



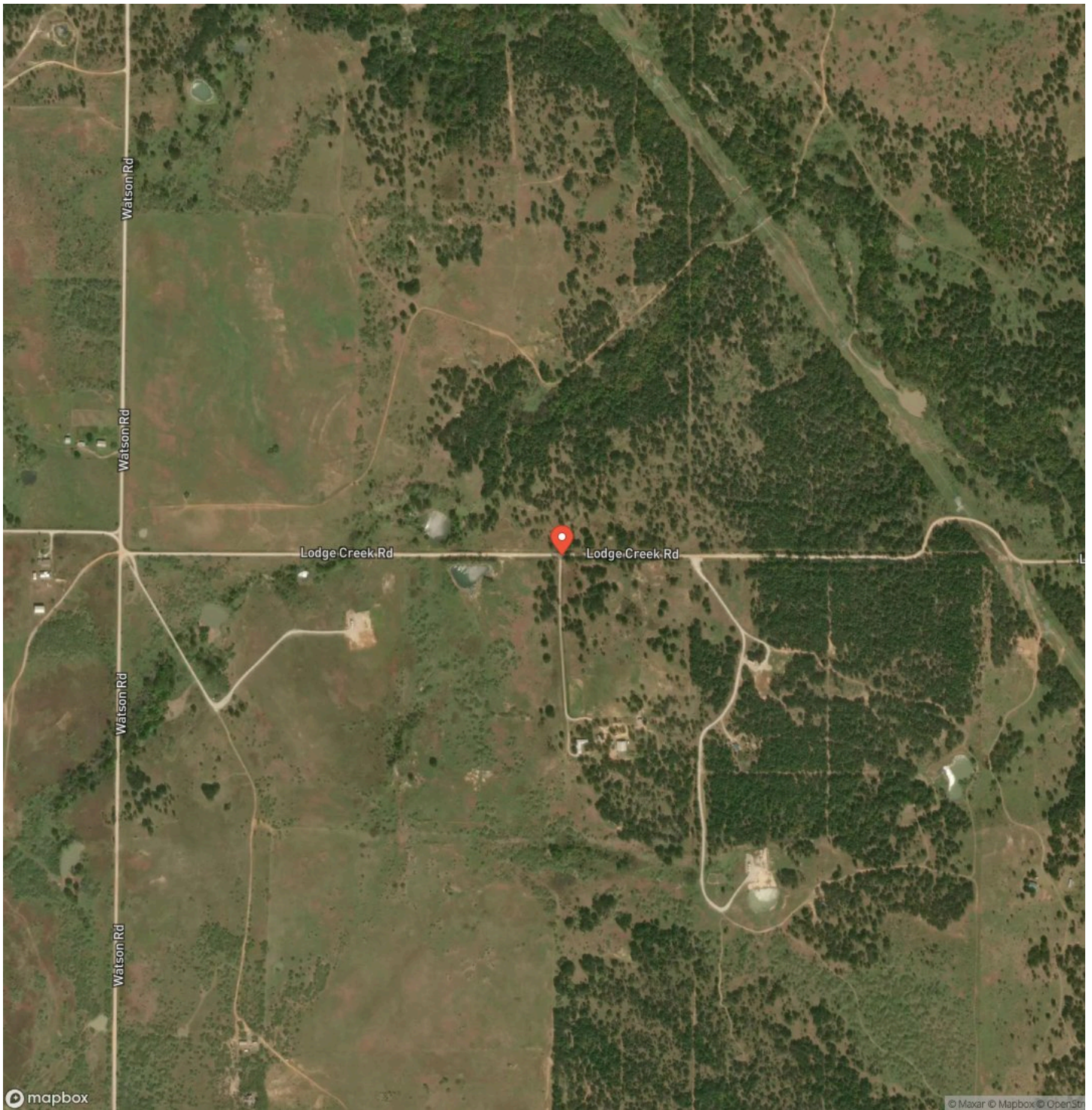
## Locator Map



# Locator Map



## Satellite Map







## **DISCLAIMERS**

Information in this brochure is provided solely for information purposes and does not constitute an offer to sell or advertise real estate outside the states in which broker or agent licensed. The information presented has been obtained from sources deemed to be reliable, but is not guaranteed or warranted by the agent, broker, or the sellers of these properties. This offering is subject to errors, omissions, prior sale, price change, correction or withdrawal from the market without notice. All references to age, square footage, income, expenses, acreage, carrying capacity, and land classification, etc. are approximate. Prospective buyers are chargeable with and expected to conduct their own independent investigation of the information and the property and to rely only on those results. Sellers reserve the right to accept or reject any and all offers without liability to any buyer or cooperating broker.

Maps are provided for illustration purposes only, the accuracy is not warranted. Parcels on interactive maps are not adjusted to match aerial backgrounds. This information is for reference purposes only and is not a legal document. Data maps contain errors. The seller and seller's agent are making known to all potential buyers that there may be variations between the location of the existing fence lines and the legal description of the deeded property. Seller and seller's agent make no warranties with regard to the location of the fence lines in relationship to the deeded property lines, nor does the Seller make any warranties or representations with regard to the specific acreage contained within the fenced property lines. Seller is selling the property in an "as is" condition, which includes the location of the fences as they exist. Boundaries shown on the accompanying maps are approximate, based on county parcel data. The maps are not to scale. The accuracy of the maps is not guaranteed. Prospective buyers are encouraged to verify fence lines, deeded property lines and acreages using a licensed surveyor at their own expense.



---

**TT Ranch Group**  
3131 Turtle Creek Blvd.  
Dallas, TX 75219  
(214) 396-9692  
<https://ttranchgroup.com/>

---

