

**Steele Creek Ranch**  
560 County Road 2560  
Walnut Springs, TX 76690

**\$2,700,000**  
79± Acres  
Bosque County



**Steele Creek Ranch**  
**Walnut Springs, TX / Bosque County**

---

**SUMMARY**

**Address**

560 County Road 2560

**City, State Zip**

Walnut Springs, TX 76690

**County**

Bosque County

**Type**

Farms, Hunting Land, Ranches, Recreational Land

**Latitude / Longitude**

32.051721 / -97.738416

**Acreage**

79

**Price**

\$2,700,000

**Property Website**

<https://ttranchgroup.com/property/steele-creek-ranch/bosque/texas/106194/>



## Steele Creek Ranch Walnut Springs, TX / Bosque County

---

### **PROPERTY DESCRIPTION**

Set in the hills of Bosque County just outside of Walnut Springs, Steele Creek Ranch is a recreational retreat that delivers on every front. A spring-fed creek, a stocked bass lake, strong wildlife habitat, and a 4,200-square-foot home that sleeps ten. The infrastructure is in place, the land is productive, and the property is ready to be enjoyed without reservation.

### **LOCATION & THE SURROUNDING AREA**

Steele Creek Ranch sits just over a mile southeast of Walnut Springs, at the edge of a stretch of Central Texas that most people from Dallas and Fort Worth haven't yet discovered. Glen Rose is 14 miles to the east, Fort Worth is 65 miles north, and Dallas is 90 miles from the front gate.

The surrounding area rewards those who know where to look. Rough Creek Lodge, Ranch & Resort, a luxury destination nestled on more than 9,000 acres in the foothills of the Texas Hill Country, is less than 15 miles away, offering world-class dining, a full-service spa, guided hunts, horseback riding, and a remarkable roster of activities including ziplining, fishing, and over six miles of nature trails.

Glen Rose punches well above its size. Known as the Dinosaur Capital of Texas, the town draws visitors to its well-preserved dinosaur tracks along the Paluxy River and the 1,500-acre Dinosaur Valley State Park. Beyond the tracks themselves, the park offers over 20 miles of scenic trails, camping, mountain biking, swimming, fishing, and paddling on the river, a full day's worth of adventure without leaving the county. Fossil Rim Wildlife Center rounds out the Glen Rose experience, offering a self-guided safari drive through native habitat where guests can encounter giraffes, rhinos, and other species up close and on their own schedule. The historic downtown square adds dining, local shopping, and a well-preserved 1893 courthouse that anchors the town's easy charm.

Twenty miles to the southeast, the town of Hico holds its own as a genuine destination. Along its historic main street you'll find custom ranch wear, handmade chocolates, local art, and antiques worth browsing at an unhurried pace. The Chop House, a scratch kitchen and Texas steakhouse inside the historic Midland Hotel, is a standout dining stop with excellent food and handcrafted cocktails. The Billy the Kid Museum adds a layer of local legend, and the surrounding blocks are lined with murals, galleries, and outfitters that make the trip worth the drive.

### **IMPROVEMENTS**

The 4,200-square-foot home sits at the highest point of the ranch, thoughtfully finished throughout and designed to comfortably sleep up to ten. It blends elevated comfort with the functionality of a true ranch retreat.

The master suite anchors one end of the house with tall ceilings and expansive windows framing views of the pool and rolling pasture beyond. A double-vanity bath and generous walk-in closet complete the suite, which sits on its own wing of the home, set apart from the guest quarters on the opposite end for added privacy. Three additional guest rooms occupy the far side of the home, each with its own character. One features two twin beds, a loft, a full bath, and direct access to the back porch and pool. A second offers a king bed, a lofted sleeping space, and a seating area with the same outdoor flow. The Navy Room is the most unique, outfitted with three authentic bunks salvaged from a naval vessel, a functioning ship door with a wheel lock, a small office nook, and a television.

The kitchen and living areas share the open main floor, anchored by a two-sided fireplace serving both rooms. A wall of windows faces the pool, fitted with remote-controlled shades. The kitchen is well equipped with a gas range, overhead vent, oversized island, drink-drawer refrigerator with freezer, and a large pantry. Just off the main floor, a soundproofed bar room features two bar tables, a booth-style bench, a proper bar area, and a wine fridge. A mud room with washer and dryer, an additional refrigerator, and carport access rounds out the main house. Water comes from an 800-foot Trinity Aquifer well pumping at 150 gallons per minute. The property is on Atmos gas and private septic.

Outside, the heated pool reaches nearly seven feet at its deepest and anchors the outdoor living space. A waterfall spills from an elevated jetted hot tub into the pool below, while a natural diving rock adds a resort-like touch. The grill house is a destination of its own with four glass garage-style doors that open the structure on three sides, a gas grill, drink fridge, sink, dining table, and mounted television inside, and a stone fireplace on the north side for cooler evenings.



The detached shop includes two drive-through garage bays alongside a complete second living unit with a full kitchen, dining room, living area, bunk beds, a master bedroom, and a bathroom, well suited for overflow, long-term lodging, or caretaker quarters. Three HVAC units condition the home, with a dedicated two-ton unit serving the master exclusively.

## **LAND & TOPOGRAPHY**

Elevation ranges from 910 feet near the house down to 850 feet along the creek bottom, with all sides of the property sloping naturally toward the creek, creating a satisfying sense of relief and movement across the landscape. The terrain is a prime example of Bosque County land at its best, rolling and diverse with a good mix of oak, cedar, and mesquite transitioning from open pasture to wooded draws and a limestone-laced creek bottom. The property carries an agricultural exemption and is actively used for cattle, helping to keep carrying costs efficient while maintaining the land in productive condition.

## **WATER**

At the heart of the ranch is Steele Creek, with more than 2,000 feet of frontage on both sides of the creek running through the property. Spring-fed with a rocky bottom and consistently clear water, the creek maintains year-round flow and features a mix of shallow runs and deeper pools reaching three feet and beyond. Lined with a mature canopy of oaks, the creek corridor stays shaded and cool even in the peak of summer, forming one of the most inviting and scenic areas on the entire property. Whether floating the creek on a warm afternoon, kayaking through its winding stretches, or fishing the deeper holes, Steele Creek delivers a recreational experience that is increasingly rare in this part of Texas. Two established crossings allow easy access to both sides of the property, while the far bank remains largely untouched, offering privacy, strong habitat, and a blank canvas for future improvements or selective clearing. In addition to the creek, a separate 1.5-acre lake stocked with bass sits within easy walking distance of the house, providing another private fishing and recreation option right out the back door.

## **HUNTING & WILDLIFE**

The creek corridor provides excellent habitat for deer, turkey, and hogs, and all three species are well represented on the property. Deer and turkey are seen regularly throughout the ranch and frequently around the house itself, making for a hunting experience that begins the moment you step outside. This area is also known for its exceptional dove hunting. The combination of rolling terrain, diverse cover, and year-round water gives the property a level of habitat quality that is difficult to replicate at this price point in Central Texas.

## **MINERALS**

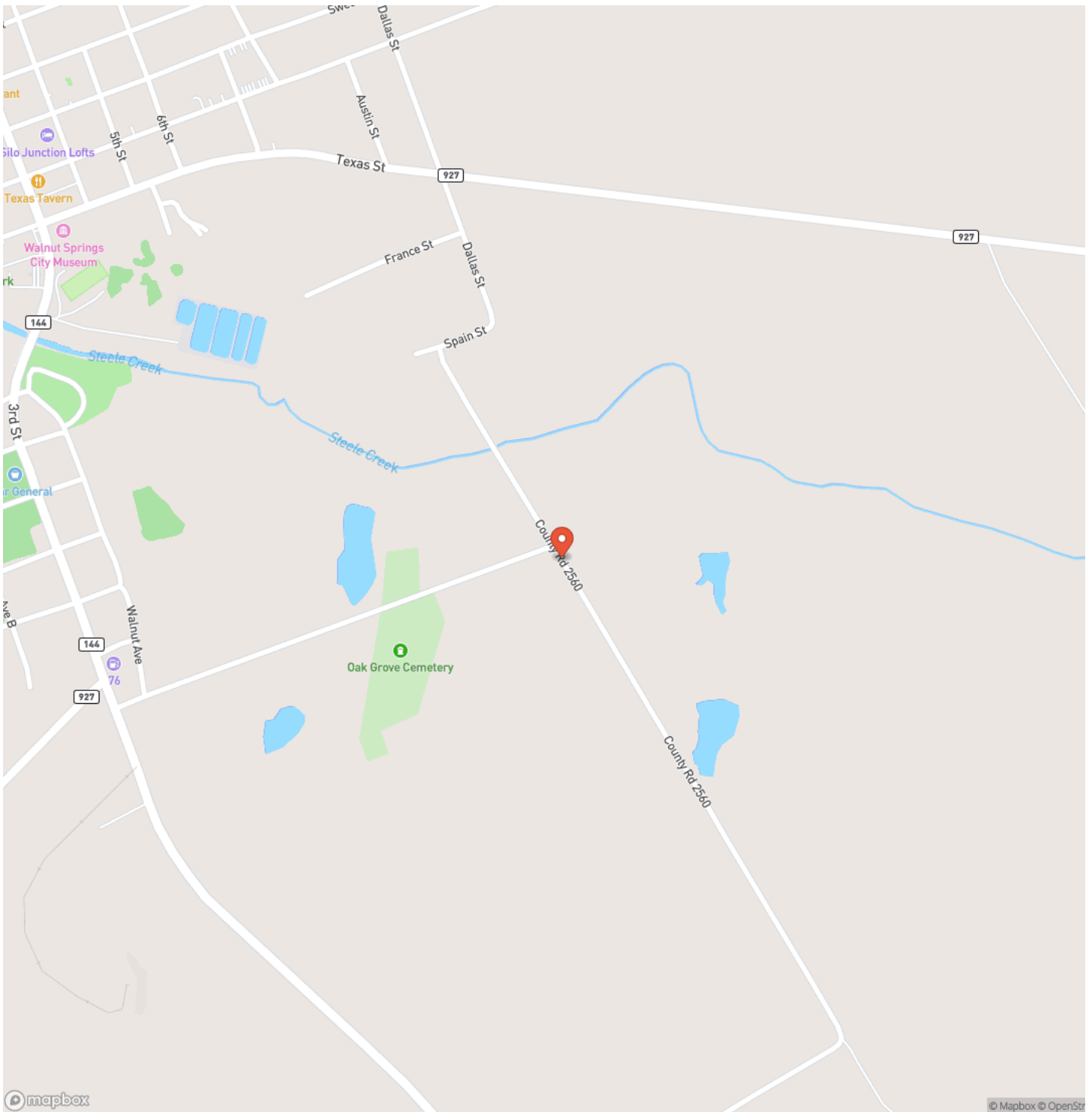
Contact broker for details



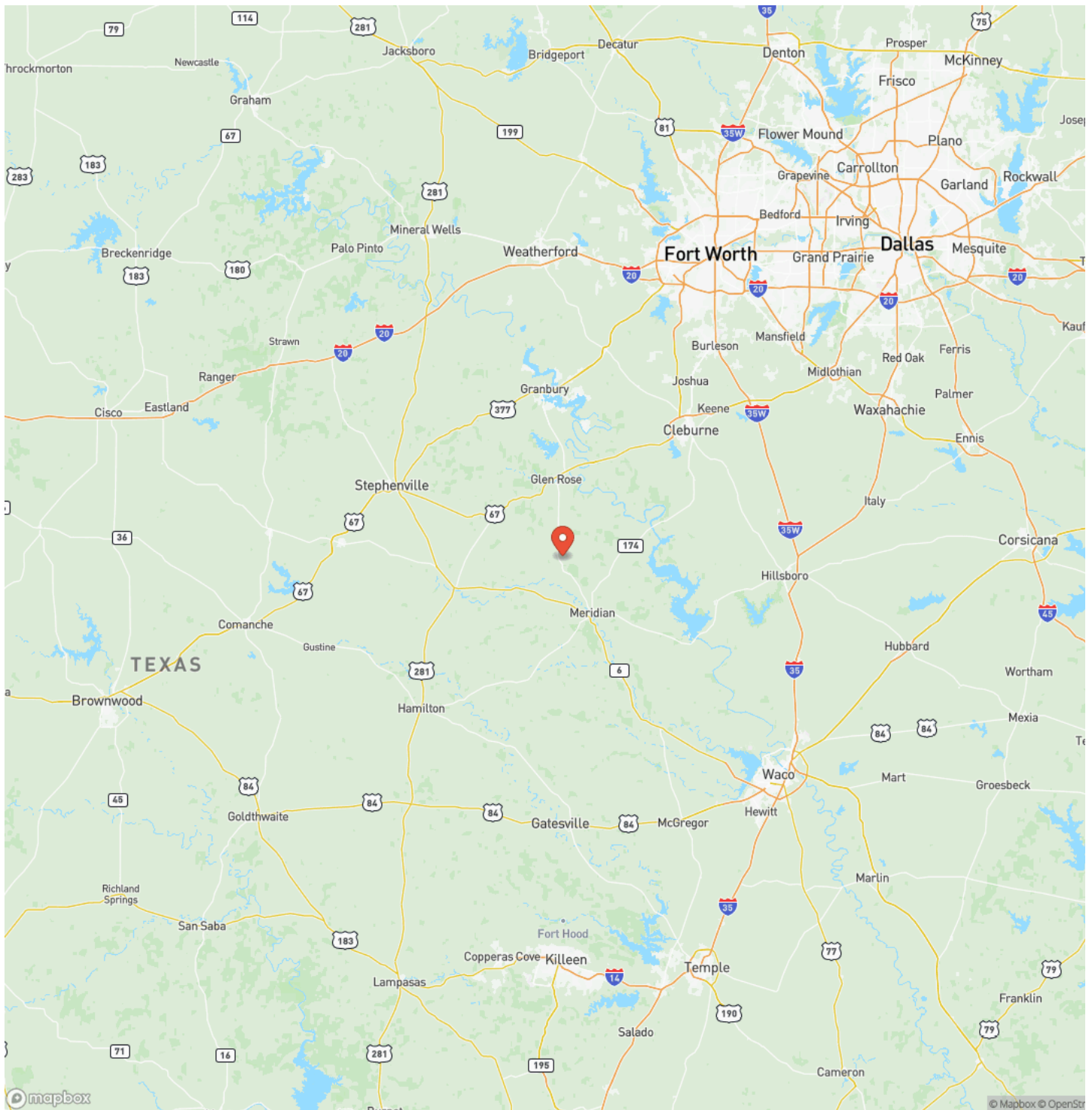
Steele Creek Ranch  
Walnut Springs, TX / Bosque County



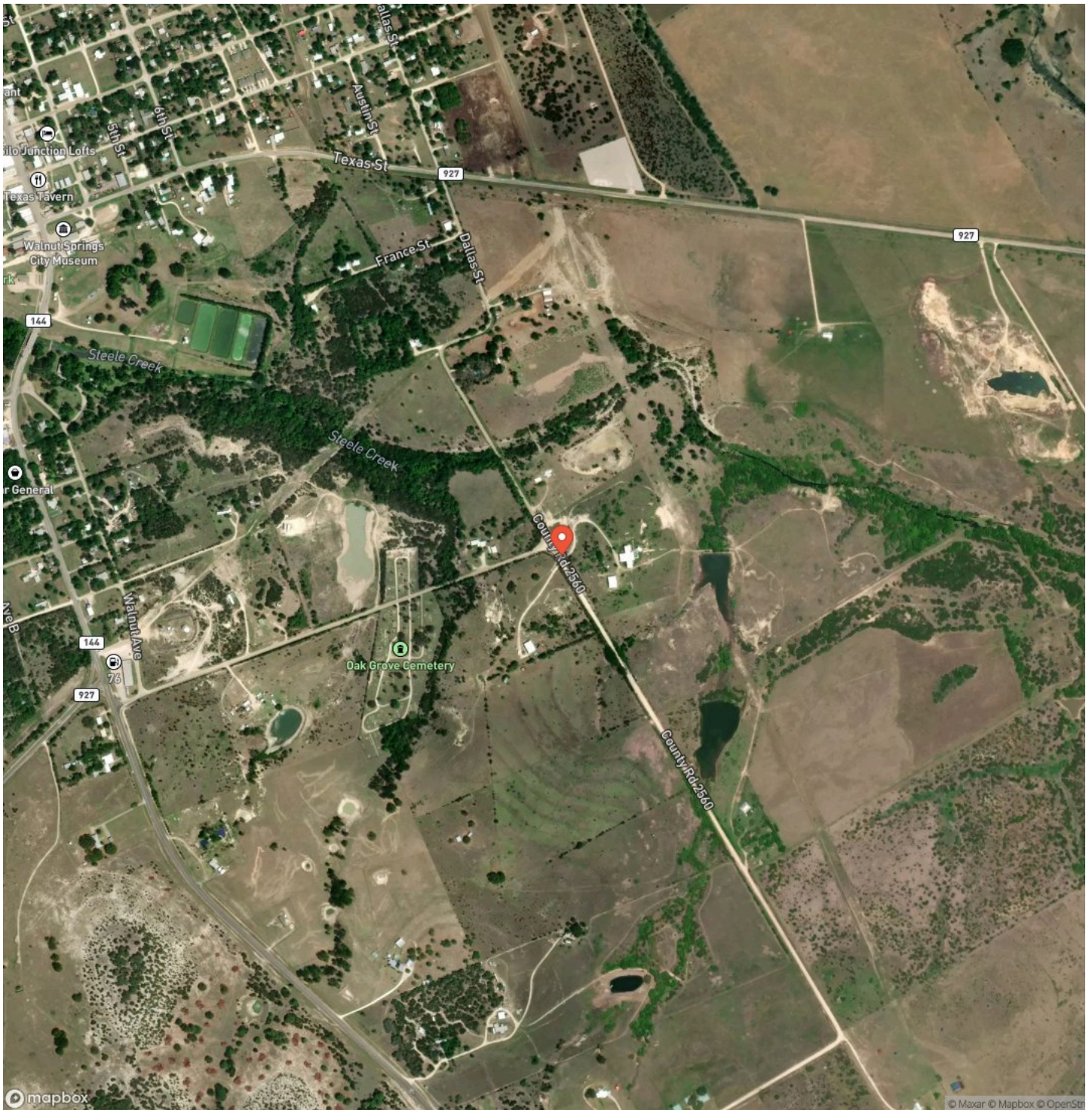
## Locator Map



# Locator Map



## Satellite Map







## **DISCLAIMERS**

Information in this brochure is provided solely for information purposes and does not constitute an offer to sell or advertise real estate outside the states in which broker or agent licensed. The information presented has been obtained from sources deemed to be reliable, but is not guaranteed or warranted by the agent, broker, or the sellers of these properties. This offering is subject to errors, omissions, prior sale, price change, correction or withdrawal from the market without notice. All references to age, square footage, income, expenses, acreage, carrying capacity, and land classification, etc. are approximate. Prospective buyers are chargeable with and expected to conduct their own independent investigation of the information and the property and to rely only on those results. Sellers reserve the right to accept or reject any and all offers without liability to any buyer or cooperating broker.

Maps are provided for illustration purposes only, the accuracy is not warranted. Parcels on interactive maps are not adjusted to match aerial backgrounds. This information is for reference purposes only and is not a legal document. Data maps contain errors. The seller and seller's agent are making known to all potential buyers that there may be variations between the location of the existing fence lines and the legal description of the deeded property. Seller and seller's agent make no warranties with regard to the location of the fence lines in relationship to the deeded property lines, nor does the Seller make any warranties or representations with regard to the specific acreage contained within the fenced property lines. Seller is selling the property in an "as is" condition, which includes the location of the fences as they exist. Boundaries shown on the accompanying maps are approximate, based on county parcel data. The maps are not to scale. The accuracy of the maps is not guaranteed. Prospective buyers are encouraged to verify fence lines, deeded property lines and acreages using a licensed surveyor at their own expense.



---

**TT Ranch Group**  
3131 Turtle Creek Blvd.  
Dallas, TX 75219  
(214) 396-9692  
<https://ttranchgroup.com/>

---

