

17 Acres in Hohenwald  
283 Dyestone Springs Road  
Hohenwald, TN 38462

**\$394,900**  
17.580± Acres  
Lewis County





**17 Acres in Hohenwald**  
**Hohenwald, TN / Lewis County**

---

**SUMMARY**

**Address**

283 Dyestone Springs Road

**City, State Zip**

Hohenwald, TN 38462

**County**

Lewis County

**Type**

Farms, Hunting Land, Recreational Land, Residential Property,  
Undeveloped Land, Single Family, Business Opportunity

**Latitude / Longitude**

35.520133 / -87.463604

**Dwelling Square Feet**

1176

**Bedrooms / Bathrooms**

3 / 1

**Acreage**

17.580

**Price**

\$394,900

**Property Website**

<https://mcewengroup.com/property/17-acres-in-hohenwald-lewis-tennessee/78897/>



## 17 Acres in Hohenwald Hohenwald, TN / Lewis County

---

### **PROPERTY DESCRIPTION**

Discover your serene escape at this stunning 2014 custom home nestled in a tranquil setting on 17.58 acres of mature hardwoods. This three-bedroom, 1176 sq. ft. residence boasts solid bamboo and tile flooring throughout, showcasing an open floor plan that blends comfort and style. Handcrafted oak millwork and cabinetry add a touch of elegance, while the screened-in covered porch invites you to enjoy the beauty of nature, regardless of the season.

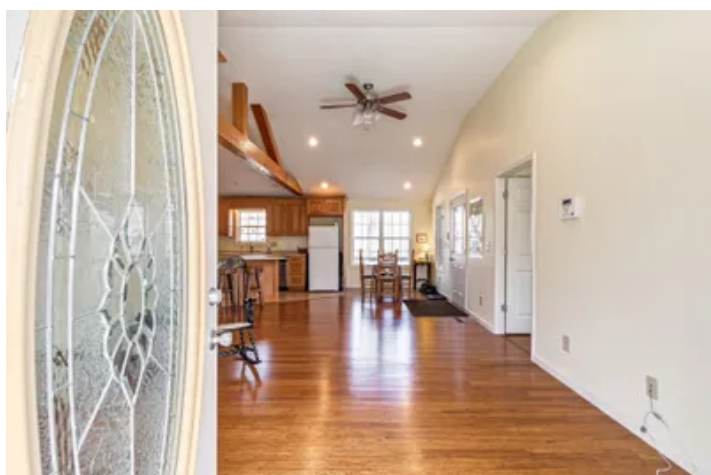
The property features a picturesque spring-fed pond, perfect for fishing or simply enjoying the soothing sounds of water. There is about 1 acre of pasture near the pond and the option to harvest the mature timber by the house and pond for income and about 5 acres of pasture. The year-round creek meanders through the landscape, offering a calming ambiance and a habitat for local wildlife. Imagine morning coffee on your porch, listening to the birds and witnessing the vibrant colors of each season.

Conveniently located just 10 minutes from historic downtown Hohenwald, you'll enjoy the perfect balance of privacy and accessibility. This home includes essential appliances such as a stove, dishwasher, and microwave, along with central heating and air, city water, and fiber optic internet. Interior soundproofing ensures tranquility, while the encapsulated crawl space with a whole-house dehumidifier enhances comfort.

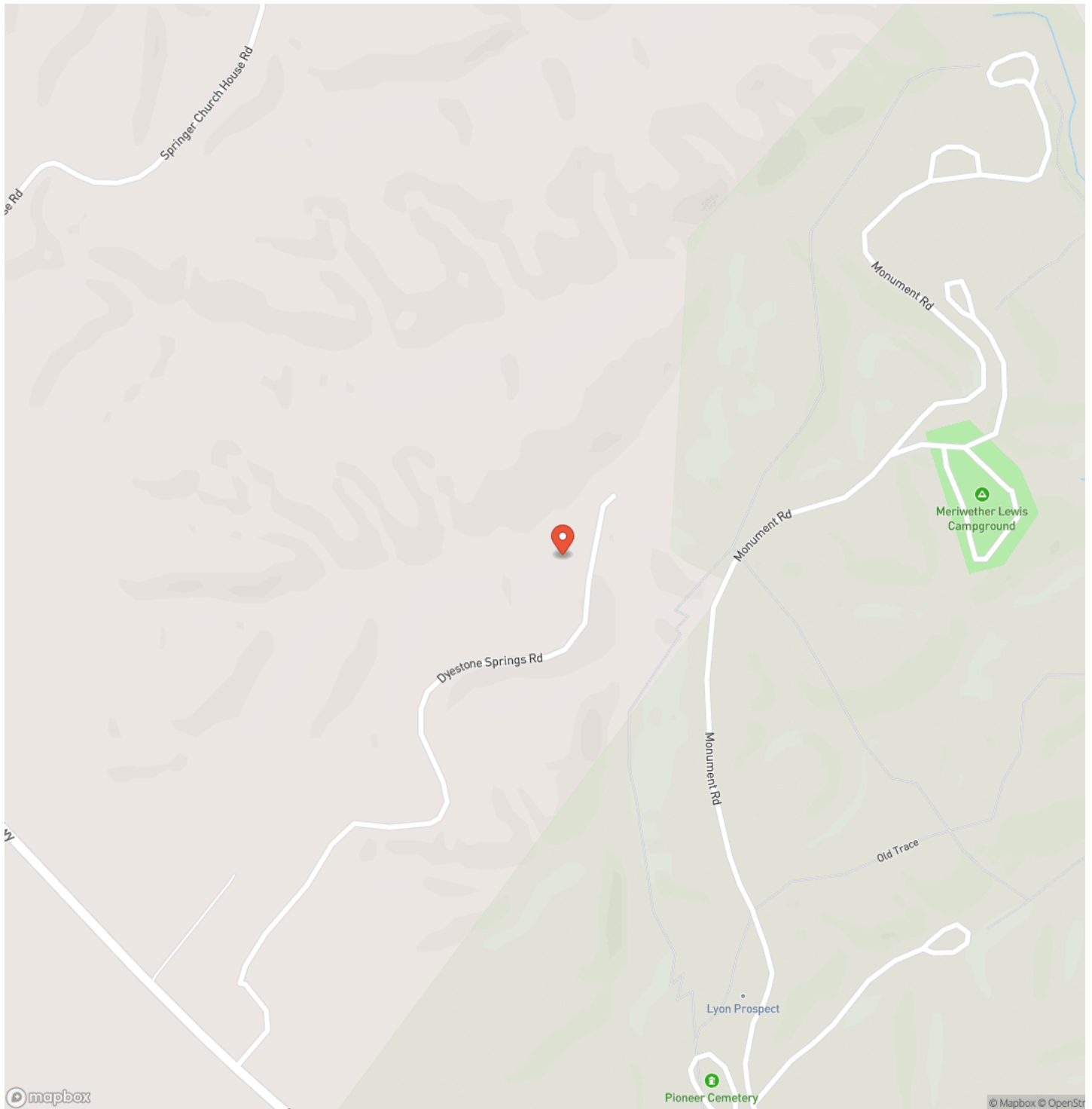
Adventure awaits with the nearby 300-acre Merriwether Lewis National Monument, offering endless opportunities for hiking and exploring. Plus, drive along the scenic Natchez Trace Parkway to Nashville, making this ideal for a vacation home, hunting retreat, or peaceful permanent residence. Close to Columbia and Franklin. Don't miss this unique opportunity to embrace nature in your own private oasis!



17 Acres in Hohenwald  
Hohenwald, TN / Lewis County

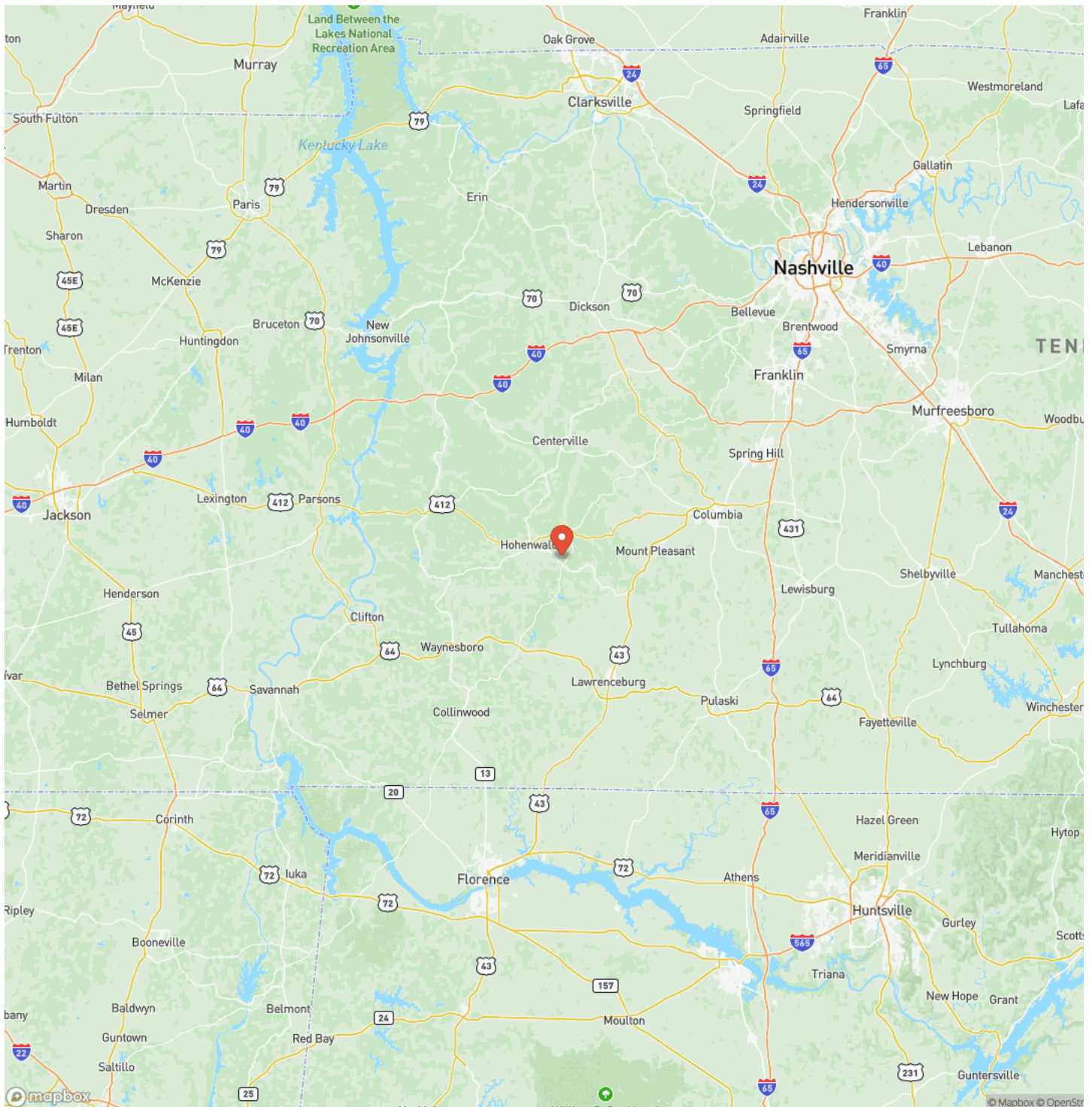


## Locator Map



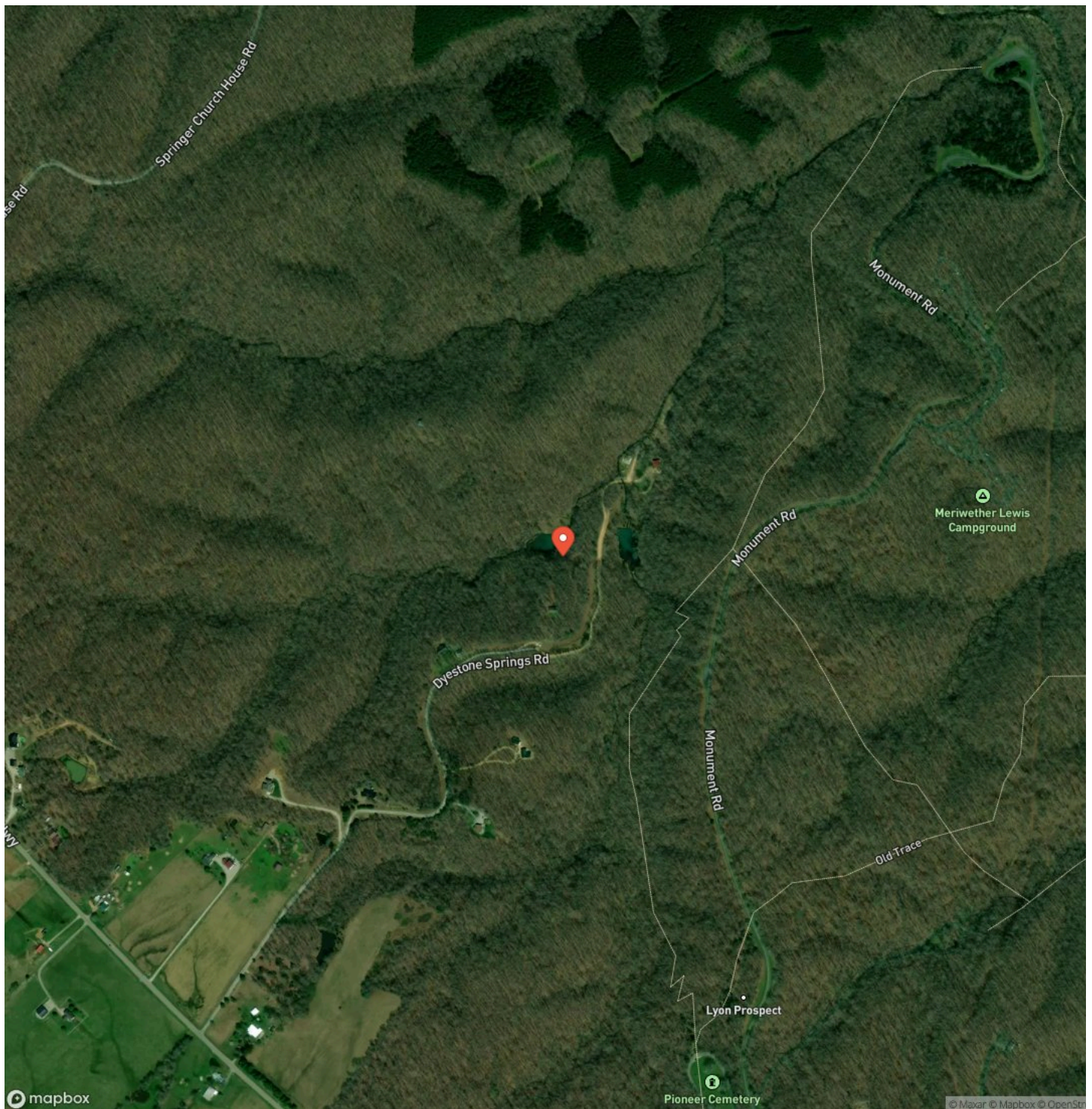


## Locator Map





## Satellite Map



**17 Acres in Hohenwald**  
**Hohenwald, TN / Lewis County**

## LISTING REPRESENTATIVE

**For more information contact:**



## Representative

John McEwen

## Mobile

(931) 628-1749

## Office

(931) 381-1808

## Email

john@mcewengroup.com

### Address

## 17A Public Square

## City / State / Zip

## NOTES

This image shows a blank sheet of white paper with horizontal ruling lines. The lines are evenly spaced and run across the width of the page. There are no margins, text, or other markings on the paper.



[illegible]

## **DISCLAIMERS**

Information in this brochure is provided solely for information purposes and does not constitute an offer to sell or advertise real estate outside the states in which broker or agent licensed. The information presented has been obtained from sources deemed to be reliable, but is not guaranteed or warranted by the agent, broker, or the sellers of these properties. This offering is subject to errors, omissions, prior sale, price change, correction or withdrawal from the market without notice. All references to age, square footage, income, expenses, acreage, carrying capacity, and land classification, etc. are approximate. Prospective buyers are chargeable with and expected to conduct their own independent investigation of the information and the property and to rely only on those results. Sellers reserve the right to accept or reject any and all offers without liability to any buyer or cooperating broker.

Maps are provided for illustration purposes only, the accuracy is not warranted. Parcels on interactive maps are not adjusted to match aerial backgrounds. This information is for reference purposes only and is not a legal document. Data maps contain errors. The seller and seller's agent are making known to all potential buyers that there may be variations between the location of the existing fence lines and the legal description of the deeded property. Seller and seller's agent make no warranties with regard to the location of the fence lines in relationship to the deeded property lines, nor does the Seller make any warranties or representations with regard to the specific acreage contained within the fenced property lines. Seller is selling the property in an "as is" condition, which includes the location of the fences as they exist. Boundaries shown on the accompanying maps are approximate, based on county parcel data. The maps are not to scale. The accuracy of the maps is not guaranteed. Prospective buyers are encouraged to verify fence lines, deeded property lines and acreages using a licensed surveyor at their own expense.



---

**McEwen Group, LLC**  
17A Public Sq  
Columbia, TN 38401  
(931) 381-1808  
[www.mcewengroup.com](http://www.mcewengroup.com)

---