

TBD US Hwy 95
TBD Old Spiral Highway
Lewiston, ID 83501

\$500,000
5± Acres
Nez Perce County



TBD US Hwy 95
Lewiston, ID / Nez Perce County

SUMMARY

Address

TBD Old Spiral Highway

City, State Zip

Lewiston, ID 83501

County

Nez Perce County

Type

Lot, Commercial, Recreational Land

Latitude / Longitude

46.462216 / -117.019314

Taxes (Annually)

\$188

Acreage

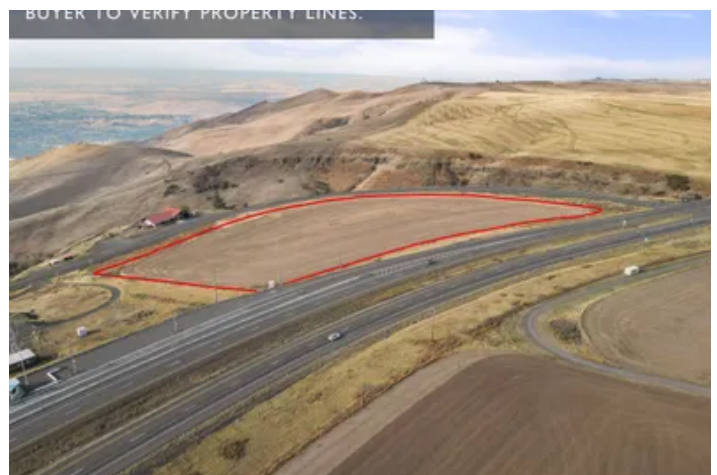
5

Price

\$500,000

Property Website

<https://ranchwestproperties.com/property/tbd-us-hwy-95/nez-perce/idaho/96528/>



PROPERTY DESCRIPTION

PROPERTY:

This phenomenally located property off US-Highway 95 outside Lewiston, Idaho, spans 5 acres and offers an excellent investment opportunity. Located atop the famous Lewiston Hill, its wonderful location suits well for many commercial or residential opportunities. This approximately 5-acre property of level land is perfectly suited for many uses, offering a spacious and easily developable site. With excellent access to main roads, the property is positioned to provide maximum visibility and accessibility, key features for any successful development. With ample space and a prime location, it is perfect for entrepreneurs to bring their business to Idaho. Don't miss this rare chance to break ground on Idaho's only North-South Highway.

LAND FEATURES:

- Elevated Ridge Location
- Buildable Site
- Main Road Access
- Spacious Location

RECREATION:

This property offers hiking, biking, and scenic drives along the rolling hills with panoramic valley views. Ideal for a home or a commercial venture, it combines recreational opportunities with residential or business development potential in an accessible location.

REGION & CLIMATE:

The region offers a unique combination of rural charm and convenient city access. Residents enjoy peaceful setting, yet remain just minutes from downtown Lewiston. Daily errands and shopping are easy, with a variety of grocery stores, boutiques, and service centers nearby. Outdoor enthusiasts will appreciate the proximity to the Snake and Clearwater Rivers, Hells Gate State Park, and numerous local trails for hiking, biking, and water recreation. This region perfectly blends rural tranquility, recreational opportunities, and convenient access to city amenities.

The region enjoys a mild four-season climate with plenty of sunshine. Summers are warm and dry, with average highs in the mid-80s. Winters are cool but generally moderate, with occasional snowfall without heavy accumulation. Spring and fall bring crisp, comfortable temperatures and vibrant seasonal color. The area's low humidity and clear skies make it a desirable location for both seasonal enjoyment and permanent living.

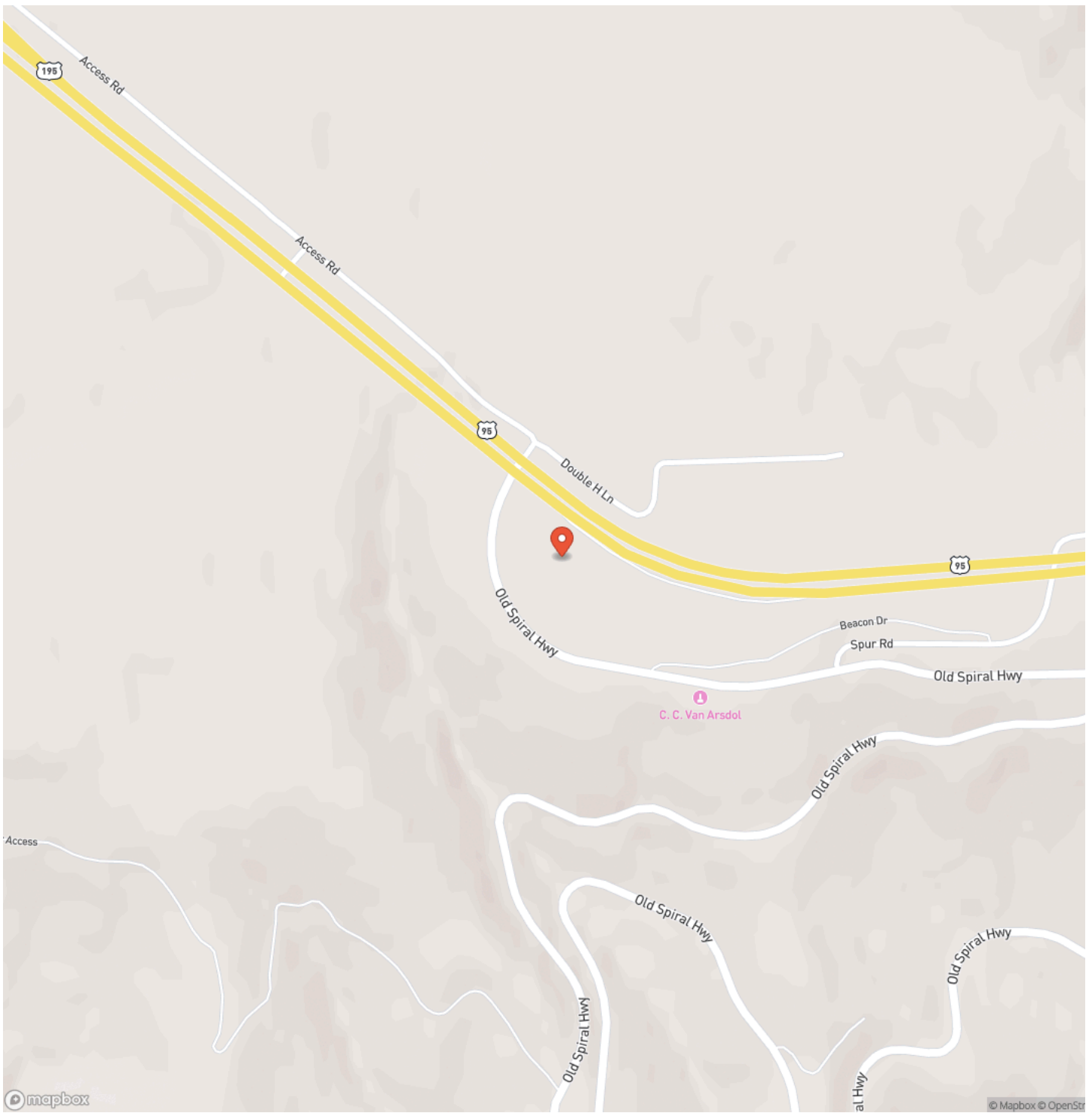
HISTORY:

Long before modern highways, the Old Lewiston Grade, was the lifeline connecting the river valley to the lands above Lewiston Hill. Built in 1917, it allowed farmers, traders, and travelers to climb nearly 2,000 feet with sweeping turns that showcased stunning valley views along the way. For decades, it was the main route out of Lewiston, blending practical transportation with scenic beauty, and remnants of its path still hint at the determination and ingenuity of early Idaho settlers. Spur Road itself today sits in this vicinity of historic hill routes and connects rural parcels to the broader Lewiston area. Its historical roots are tied less to a singular landmark event and more to the development of transportation patterns in northern Idaho.

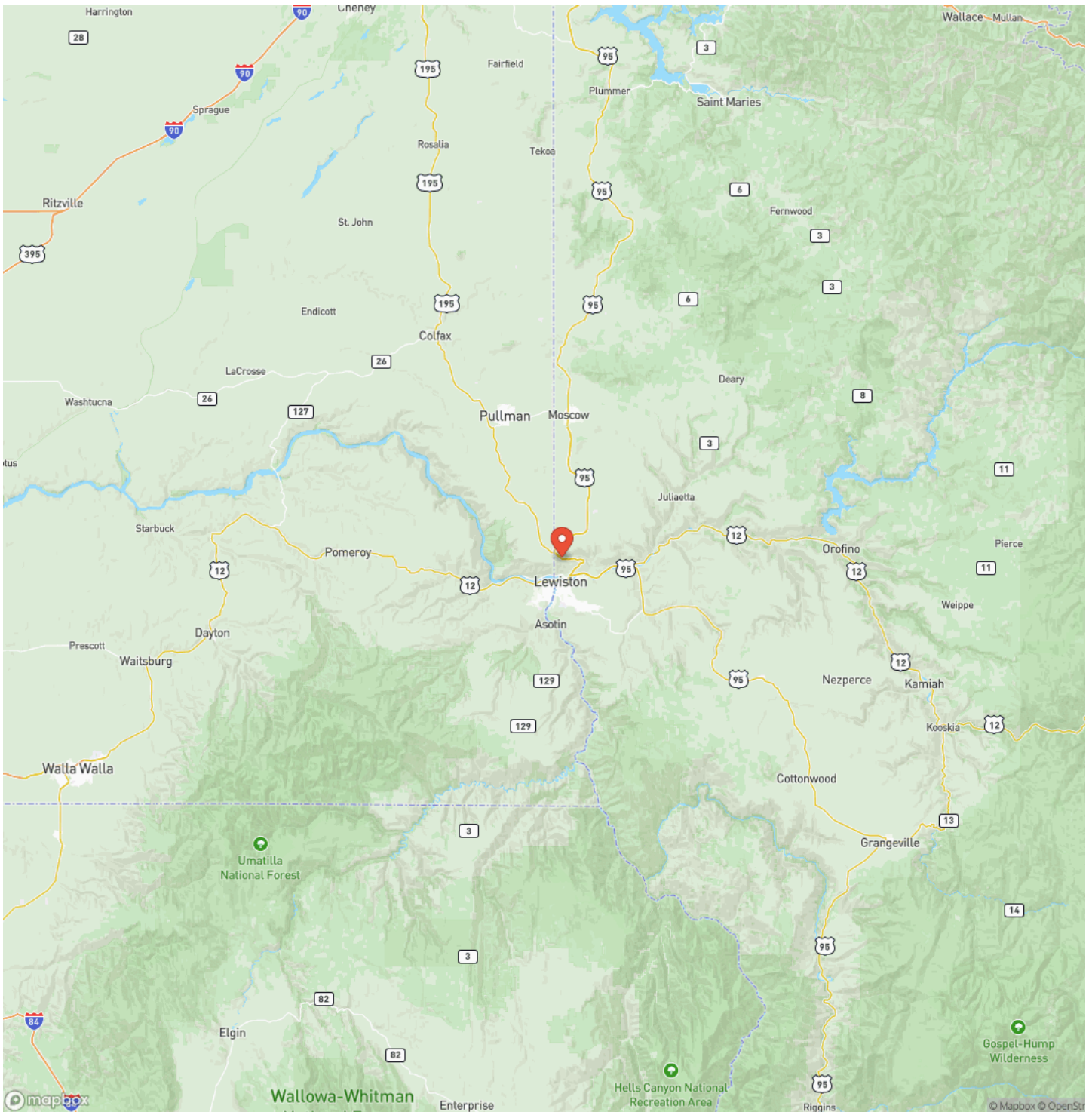
TBD US Hwy 95
Lewiston, ID / Nez Perce County



Locator Map



Locator Map



Satellite Map



DISCLAIMERS

Taxes & Parcel number are for parent parcel. Property for sale is 5 acres on the North West side of the surveyed 8.49 acres. Red lines in property photos outline the whole 8.49 acres, seller is willing to sell 5 of the 8.49 acres. All information is deemed reliable, buyer and buyers agent to verify all information.

Ranch West Properties
413 Main ST
Cottonwood, ID 83522
(208) 507-0517
<https://ranchwestproperties.com/>
