

Sullivent Rd.  
TBD Sullivent Rd.  
Loranger, LA 70446

**\$2,093,800**  
288.8± Acres  
Tangipahoa County



**Sullivent Rd.  
Loranger, LA / Tangipahoa County**

---

**SUMMARY**

**Address**

TBD Sullivent Rd.

**City, State Zip**

Loranger, LA 70446

**County**

Tangipahoa County

**Type**

Undeveloped Land, Timberland

**Latitude / Longitude**

30.608414 / -90.291604

**Acreage**

288.8

**Price**

\$2,093,800

**Property Website**

<https://americas.land/property/sullivent-rd-/tangipahoa/louisiana/103352/>



**Sullivent Rd.  
Loranger, LA / Tangipahoa County**

---

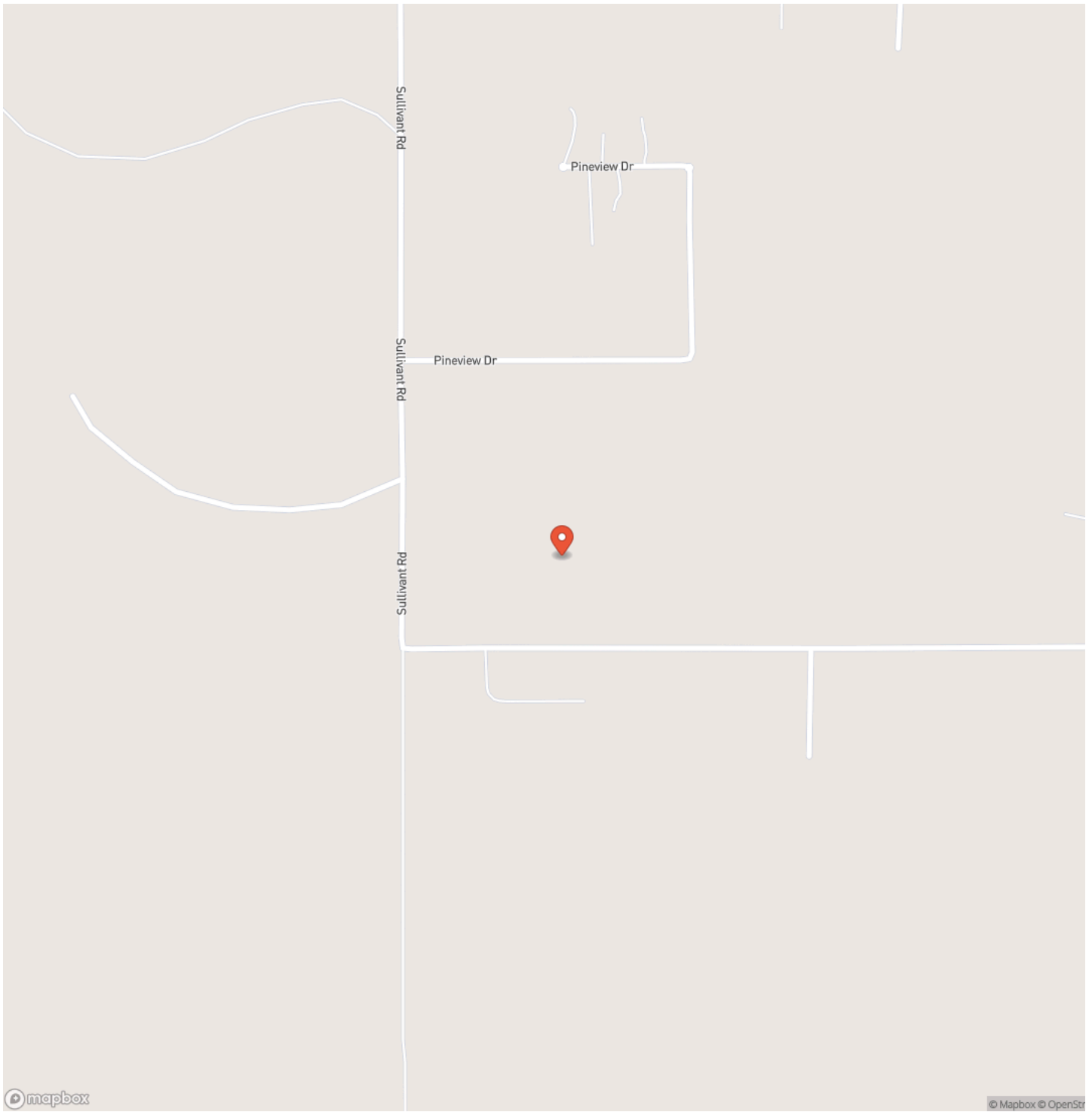
**PROPERTY DESCRIPTION**

This 289-acre wooded tract in Tangipahoa Parish, LA, offers a prime opportunity for residential development. Located 5.8 miles west of Folsom with access via Sullivent Road, the property features mature timber, providing potential income through selective harvesting. Just 13 miles from Hammond and 15 miles from Covington, it's ideally positioned for large-lot or estate-style developments. Surrounded by growing residential areas, this land offers excellent potential for phased housing projects or a masterplanned community. A rare chance to capitalize on both natural beauty and timber value in Southeast Louisiana's expanding residential market.

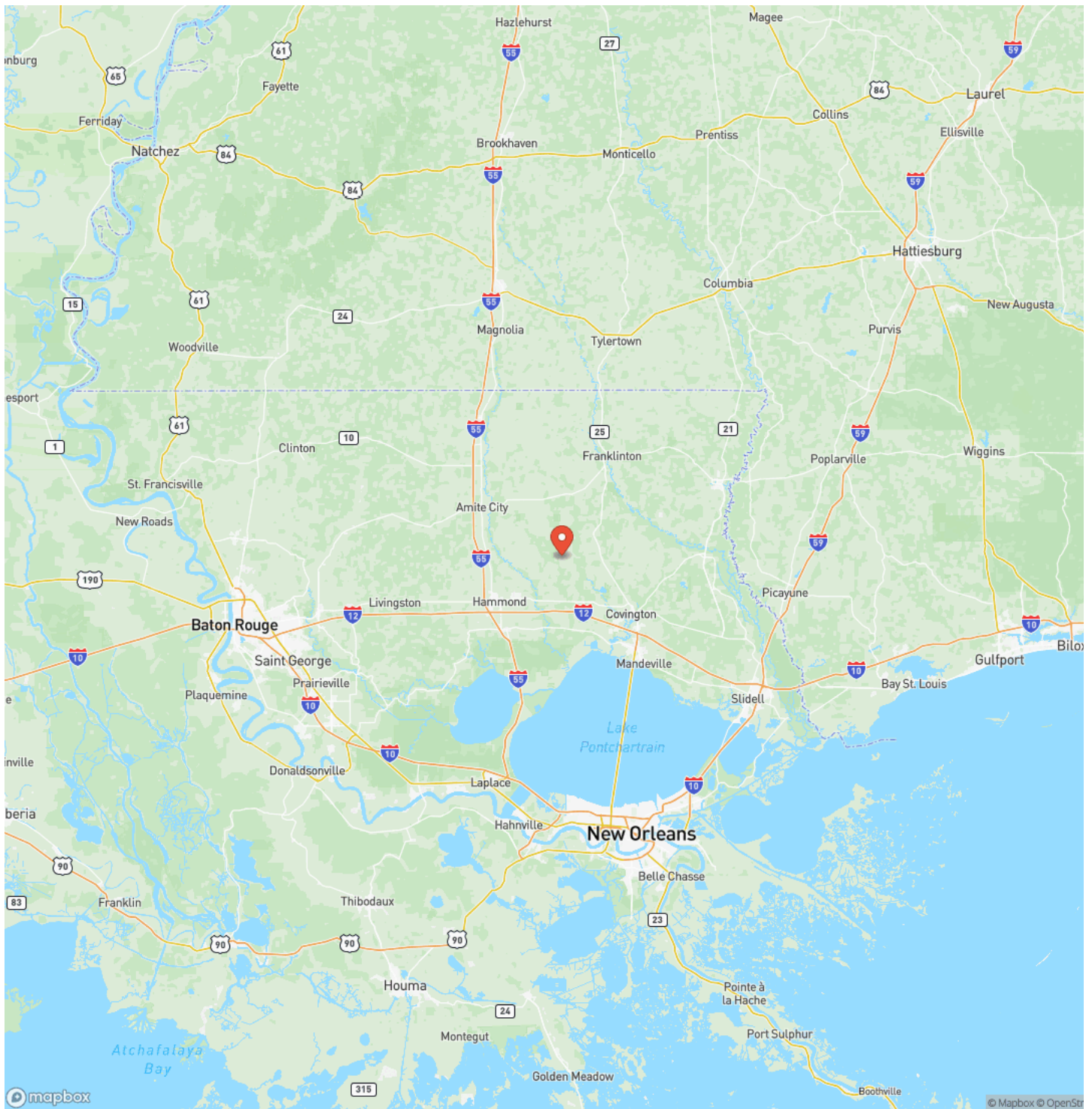
Sullivent Rd.  
Loranger, LA / Tangipahoa County



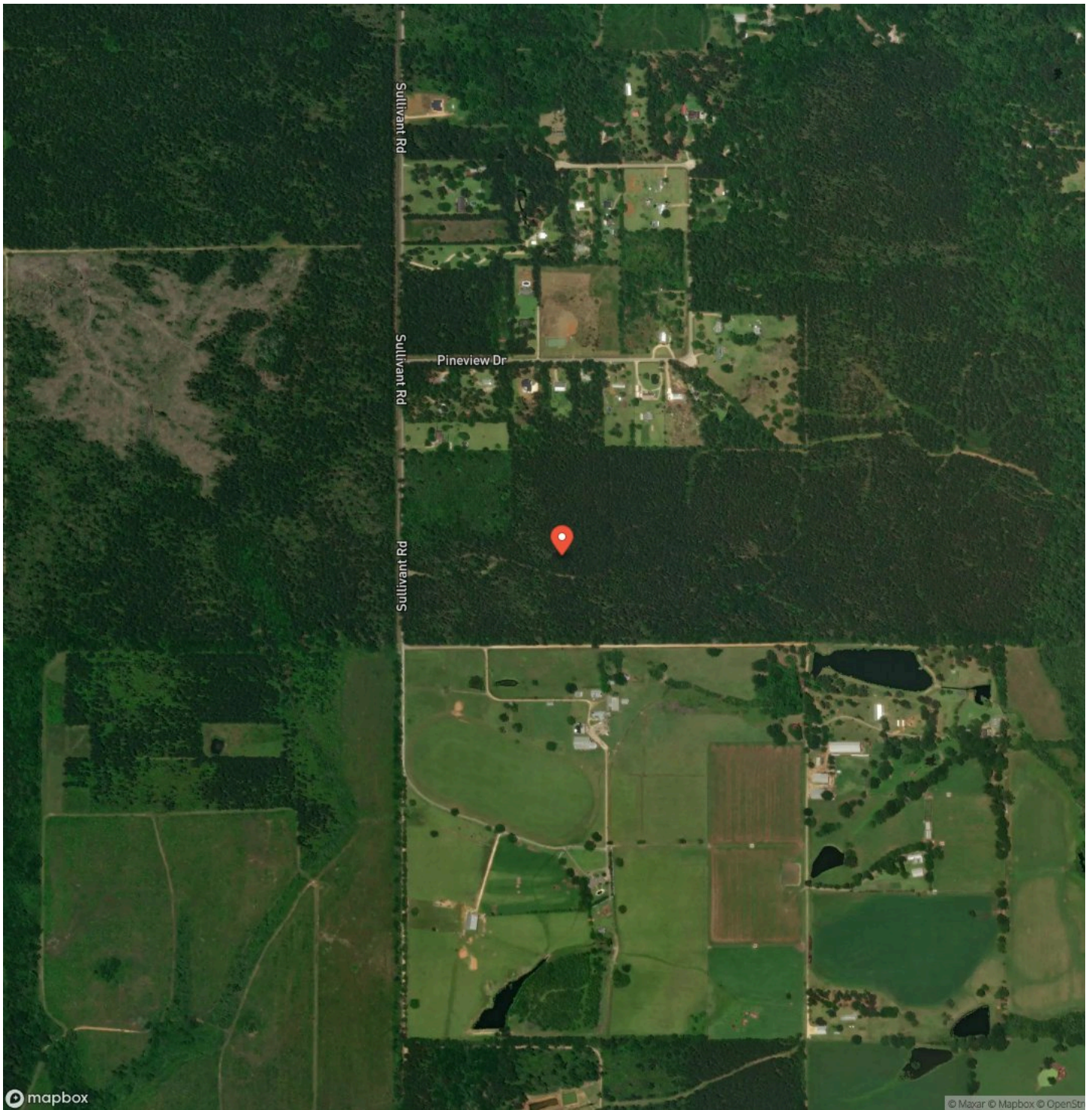
## Locator Map



# Locator Map



## Satellite Map



© mapbox

© Maxar © Mapbox © OpenStr





## **DISCLAIMERS**

DISCLAIMER: The data displayed and relating to real estate for sale on this website is obtained from public records and/or MLS feeds from the local jurisdiction in which the applicable property is located. As America's Land Partners cannot guarantee that all public records and MLS data is accurate and error-free, it is important that you contact your agent directly in order to obtain the most up-to-date information available. All information deemed reliable but not guaranteed and should be independently verified. All properties are subject to prior sale, change or withdrawal. Neither listing broker(s) nor America's Land Partner's shall be responsible for any typographical errors, misinformation, misprints and shall be held totally harmless.

COOPERATING BROKER COMPENSATION: Please contact Listing Agent/Broker for terms of cooperating Buyer Broker compensation. Terms of compensation, if any, shall be ascertained by cooperating brokers before beginning efforts to accept the offer of cooperation. Buyer's Agents/Brokers must be identified, by Buyers and/or their Brokers/Agents, on the first contact with Listing Broker/Agents to receive compensation. Otherwise, compensation will be at the sole discretion of the Seller, Broker, and America's Land Partners. Real Estate Commissions and Cooperating Broker Compensation, if any, are fully negotiable and is not fixed or controlled by law, by America's Land Partners (or any division/trade name/DBA of), or its Agents/Brokers.



---

**America's Land Partners**  
PO Box 1707  
Mabank, TX 75147  
(800) 560-4143  
<https://americas.land/>

---

