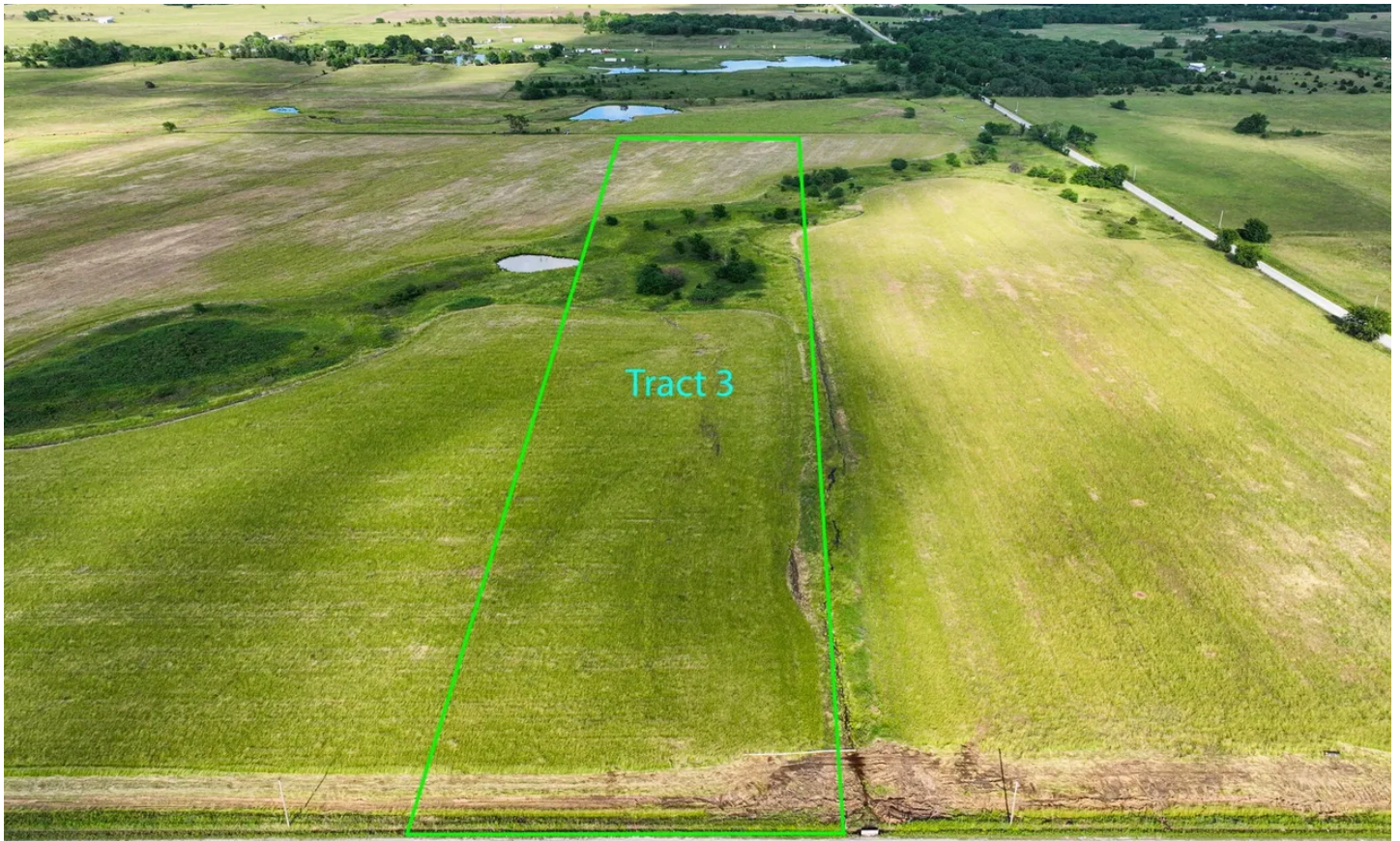


The Talala Homestead Lot 3
003 S 4080 Rd
Talala, OK 74080

\$129,000
13.1± Acres
Rogers County



The Talala Homestead Lot 3
Talala, OK / Rogers County

SUMMARY

Address

003 S 4080 Rd

City, State Zip

Talala, OK 74080

County

Rogers County

Type

Farms, Lot

Latitude / Longitude

36.541482 / -95.737336

Acreage

13.1

Price

\$129,000

Property Website

<https://whiteoakrealestate.com/property/the-talala-homestead-lot-3/rogers/oklahoma/95363/>



The Talala Homestead Lot 3
Talala, OK / Rogers County

PROPERTY DESCRIPTION

A rare opportunity to own 13.1 acres of clean, gently sloped land perfect for livestock or a custom build. This tract features excellent conditions thanks to years of pasture spraying, plus all the infrastructure to get started, such as electric and water tap available. Located just west of Talala, with easy access to major corridors and the booming cities nearby.



The Talala Homestead Lot 3
Talala, OK / Rogers County



Locator Map



Locator Map



Satellite Map



DISCLAIMERS

Boundary lines are approximate and for illustrative purposes only. No representation or warranty is made as to accuracy. Buyer to verify all boundaries by independent survey



White Oak Real Estate Group
4835 S. Fulton Ave, Ste. 100
Tulsa, OK 74066
(918) 607-1006
<https://whiteoakrealestate.com/>

