

Whispering Creek acres Tract # 1
Tract 1 S Elwood Avenue
Glenpool, OK 74033

\$185,000
2.870± Acres
Tulsa County



**Whispering Creek acres Tract # 1
Glenpool, OK / Tulsa County**

SUMMARY

Address

Tract 1 S Elwood Avenue

City, State Zip

Glenpool, OK 74033

County

Tulsa County

Type

Undeveloped Land

Latitude / Longitude

35.966064 / -95.994468

Acreage

2.870

Price

\$185,000

Property Website

<https://whiteoakrealestate.com/property/whispering-creek-acres-tract-1-tulsa-oklahoma/104990/>



Whispering Creek acres Tract # 1 Glenpool, OK / Tulsa County

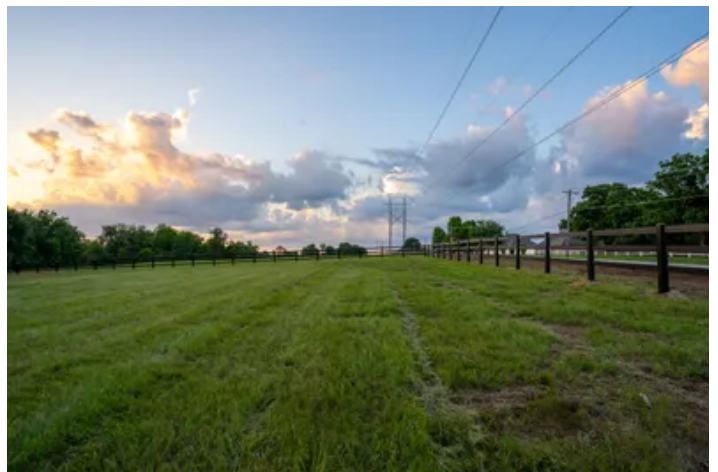
PROPERTY DESCRIPTION

Rare opportunity to own nearly 2.87 +/- acres in the rapidly growing Glenpool area at 141st & Elwood! This beautiful tract offers the perfect blend of country feel and convenient access to shopping, schools, highways, and Tulsa metro amenities. Ideal for a custom home, small investment project, or future development. Property features open space with mature trees nearby, beautiful topography, and an amazing creek that adds both character and privacy to the land. Tract has direct access to Elwood with easy entry and visibility as well as new beautiful fencing. Plenty of room for a shop, pool, animals, or additional improvements. Opportunities like this in a high-growth corridor are becoming increasingly difficult to find.

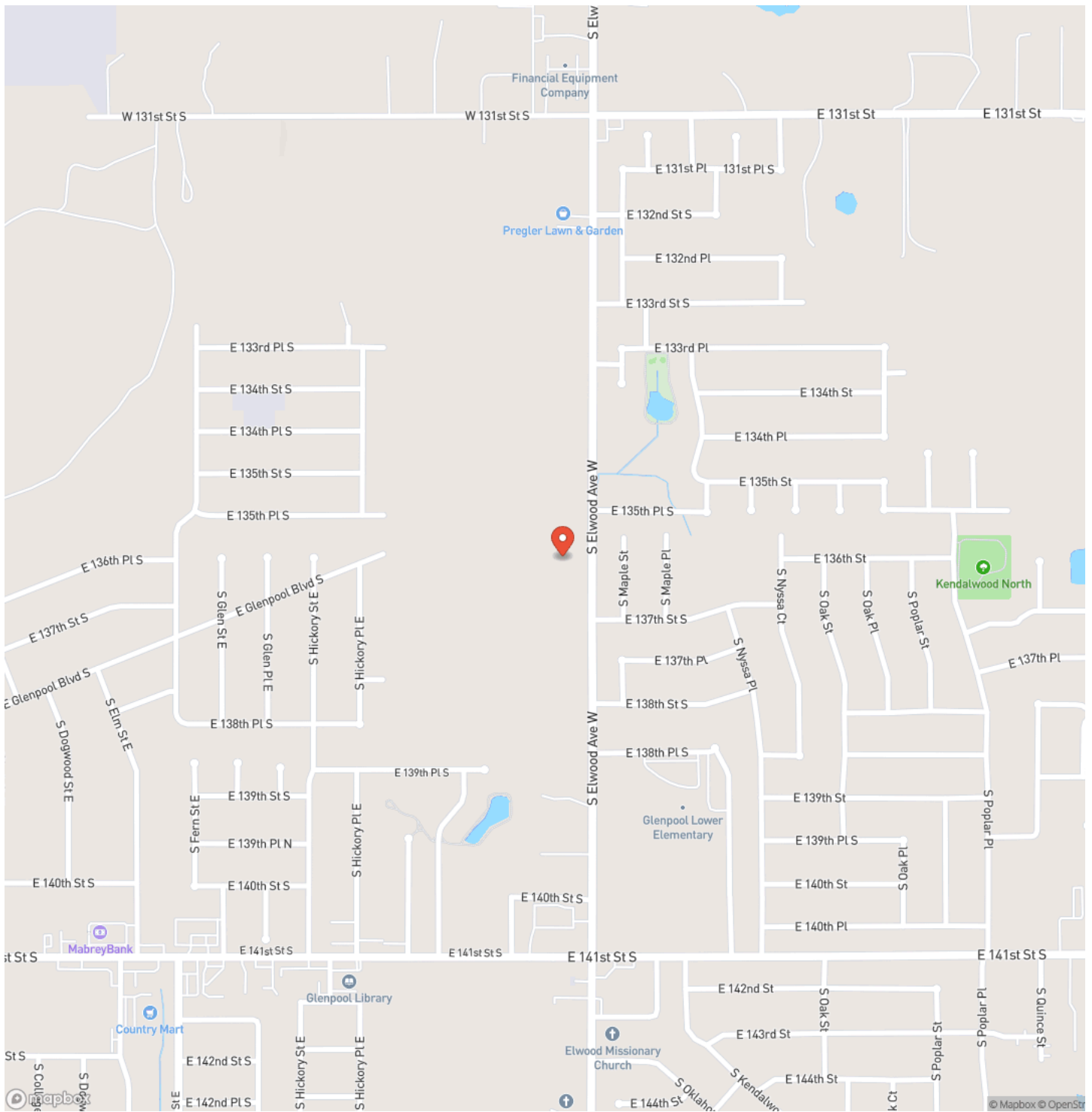
Don't miss out on this rare opportunity!



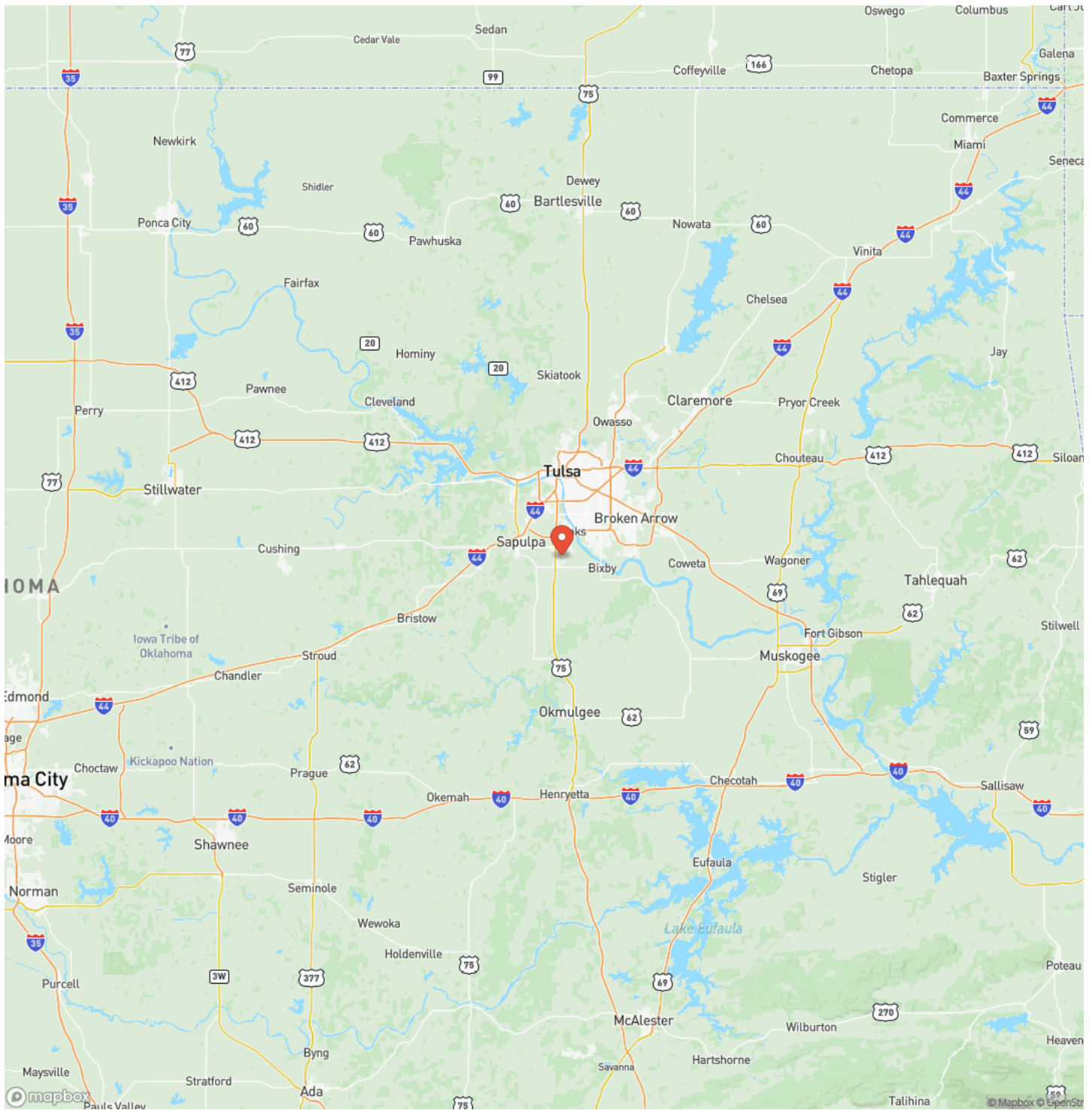
Whispering Creek acres Tract # 1
Glenpool, OK / Tulsa County



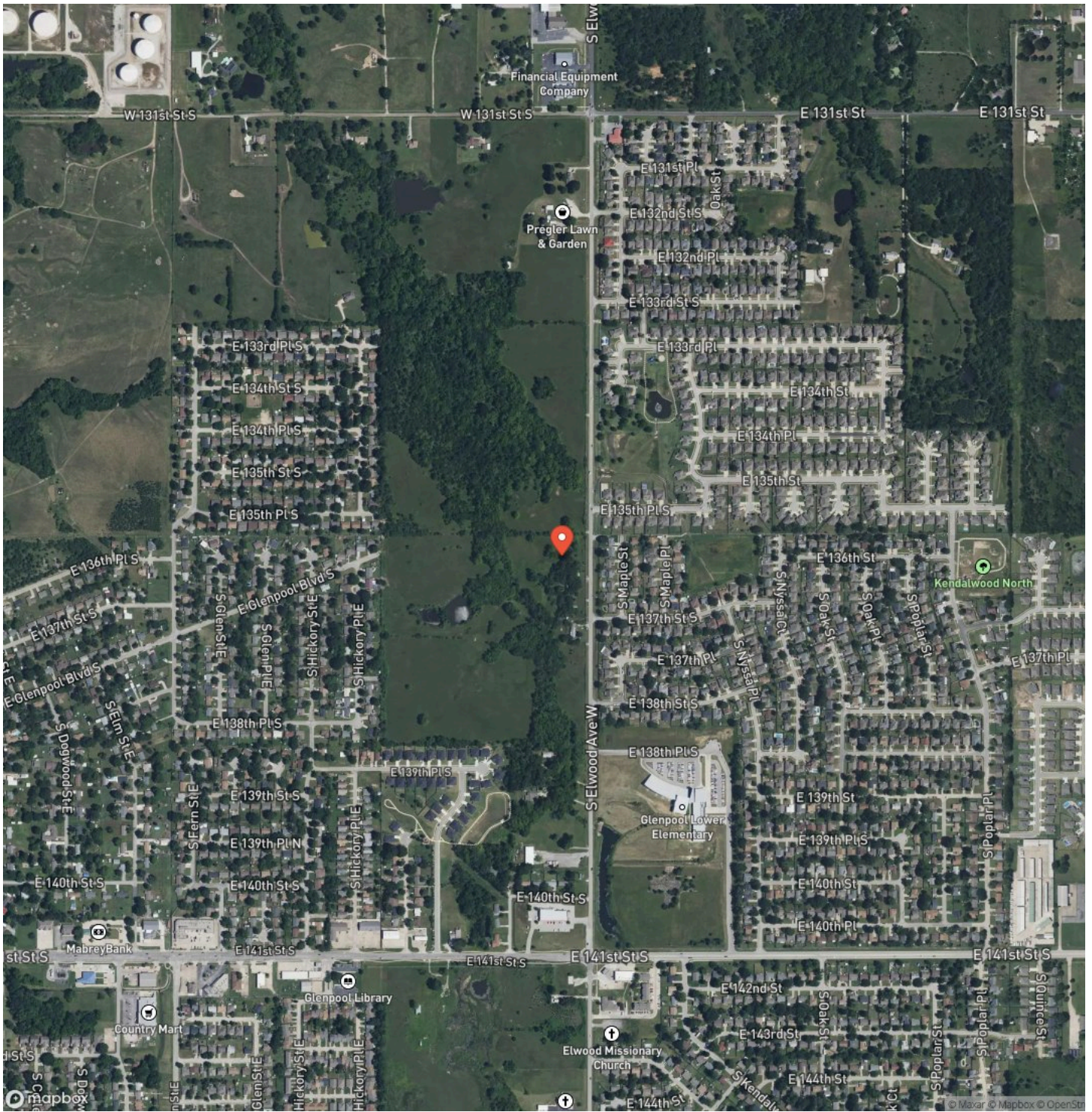
Locator Map



Locator Map



Satellite Map



DISCLAIMERS

Boundary lines are approximate and for illustrative purposes only. No representation or warranty is made as to accuracy. Buyer to verify all boundaries by independent survey



White Oak Real Estate Group
4835 S. Fulton Ave, Ste. 100
Tulsa, OK 74066
(918) 607-1006
<https://whiteoakrealestate.com/>

