

Keystone Trails Corner Acreage
002 W 41st Street
Sand Springs, OK 74063

\$189,000
12.05± Acres
Tulsa County



**Keystone Trails Corner Acreage
Sand Springs, OK / Tulsa County**

SUMMARY

Address

002 W 41st Street null

City, State Zip

Sand Springs, OK 74063

County

Tulsa County

Type

Recreational Land, Ranches, Farms

Latitude / Longitude

36.104694 / -96.276004

Acreage

12.05

Price

\$189,000

Property Website

<https://whiteoakrealestate.com/property/keystone-trails-corner-acreage/tulsa/oklahoma/103933/>



Keystone Trails Corner Acreage Sand Springs, OK / Tulsa County

PROPERTY DESCRIPTION

Finding a property that offers both usable land and a peaceful setting isn't always easy, but this Keystone Trails tract delivers on both. Spanning approximately 12 acres +/- and situated between Sand Springs and Mannford, it puts you in a convenient location without sacrificing the quiet, rural atmosphere most buyers are looking for. Keystone Lake is just a short drive away, with a nearby boat ramp less than 4 miles from the property, making lake days simple and accessible.

The land itself is well-suited for a variety of building plans, featuring a gentle layout and several strong options for placing a home, shop, or additional improvements. Whether you're planning a traditional build or something more flexible like a barndominium, there's plenty of space to make it your own. Scattered mature trees provide natural screening and shade, while trails cut through the property make it easy to walk and envision future plans.

Access is already in place with a gravel drive off paved 41st Street, saving time and effort as you move forward. A pond is also located on the property, adding both visual appeal and practical use for recreation or livestock.

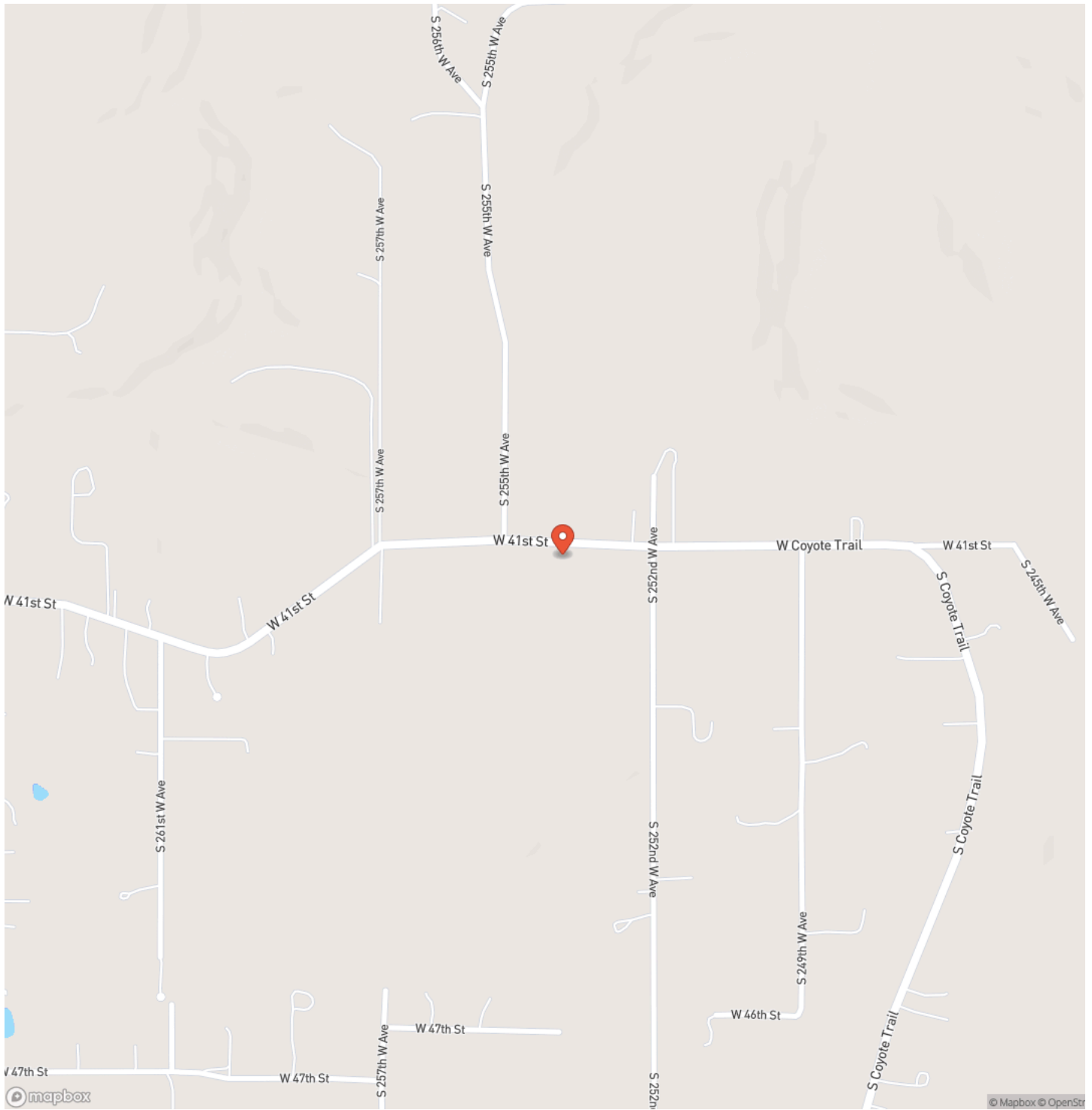
Utilities-including water from the City of Sand Springs, natural gas, electricity, and fiber internet-are available at the road, giving you the ability to build without major hurdles. Downtown Tulsa is within about a 30-minute drive, keeping work, dining, and entertainment within reach.

An added advantage is the availability of an adjoining tracts, offering the opportunity to expand your acreage if desired. Properties in this area that combine location, usable ground, existing features, and expansion potential are increasingly hard to come by.

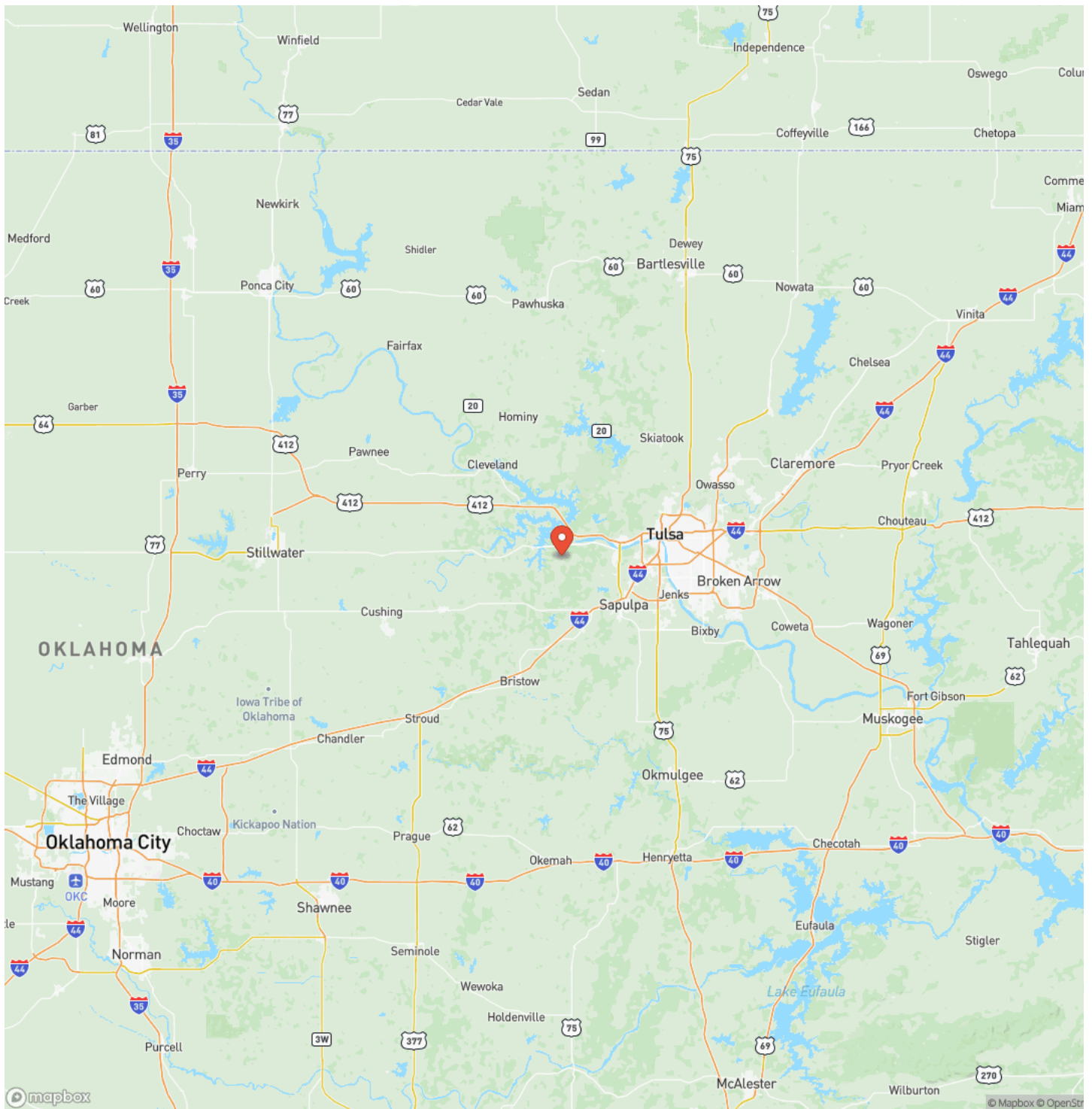
Keystone Trails Corner Acreage
Sand Springs, OK / Tulsa County



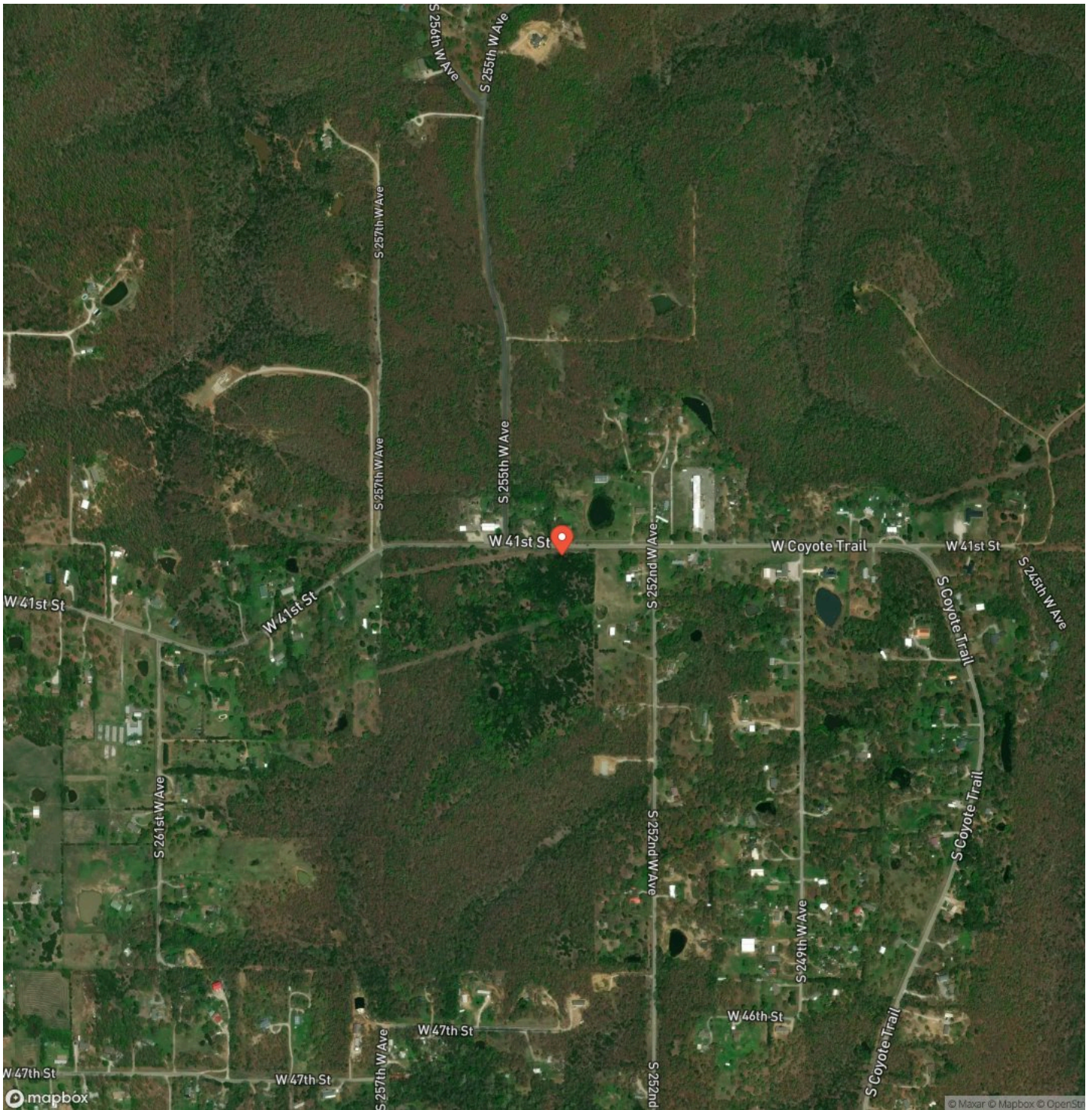
Locator Map



Locator Map



Satellite Map



DISCLAIMERS

Boundary lines are approximate and for illustrative purposes only. No representation or warranty is made as to accuracy. Buyer to verify all boundaries by independent survey



White Oak Real Estate Group
4835 S. Fulton Ave, Ste. 100
Tulsa, OK 74066
(918) 607-1006
<https://whiteoakrealestate.com/>

